

Family Peak Complex MT-LCF-005061



Public Information Map
September 7, 2015

0 0.5 1 1.5 2
Miles

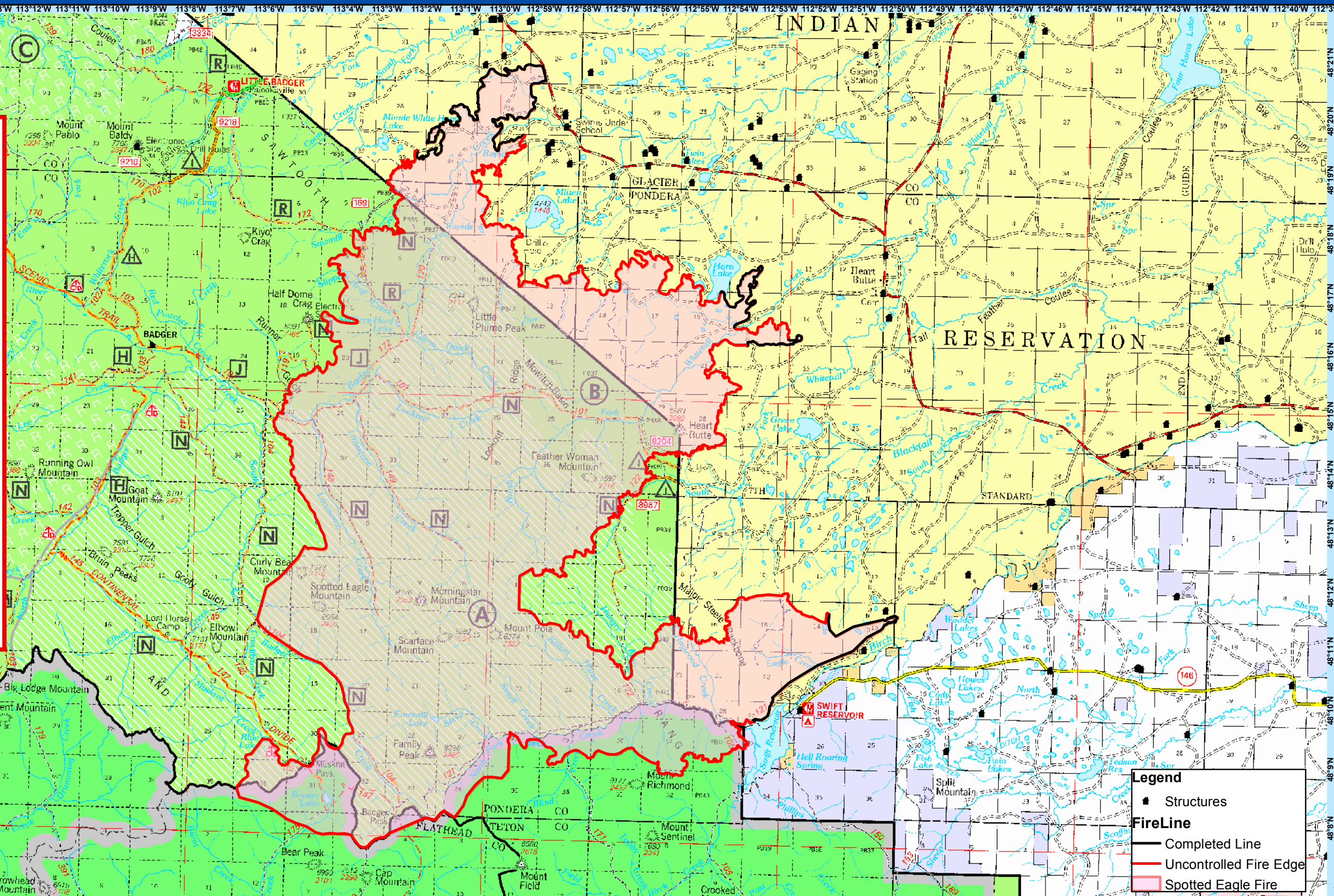
Area Closure Update

As of midnight on September 6, 2015 the Rocky Mountain Ranger District will reduce the large area closures that have been in effect since August 28, 2015. The only areas that will remain closed are the areas within the existing fire perimeters. In the meantime, fire crews will be evaluating and mitigating hazards along key travel routes within the fire perimeters. When Fire Managers determine those routes are safe for public travel, the District will begin incrementally opening those travel routes.

For more info about
Fires on the
Rocky Mountain
Ranger District



EAR



Legend

- Structures
- FireLine**
 - Completed Line
 - Uncontrolled Fire Edge
 - Spotted Eagle Fire