

113°5'W 113°4'W 113°3'W 113°2'W 113°1'W 113°0'W 112°59'W 112°58'W 112°57'W 112°56'W 112°55'W 112°54'W 112°53'W 112°52'W



7-Sep-2015 @ 18:45

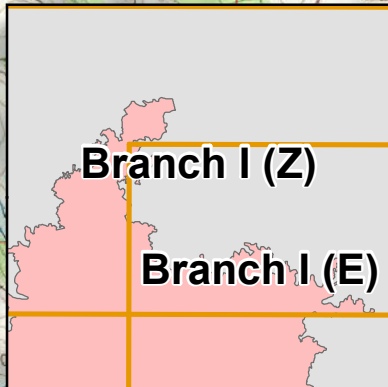


Link to Dropbox for Maps and IAP

Branch I

Miles

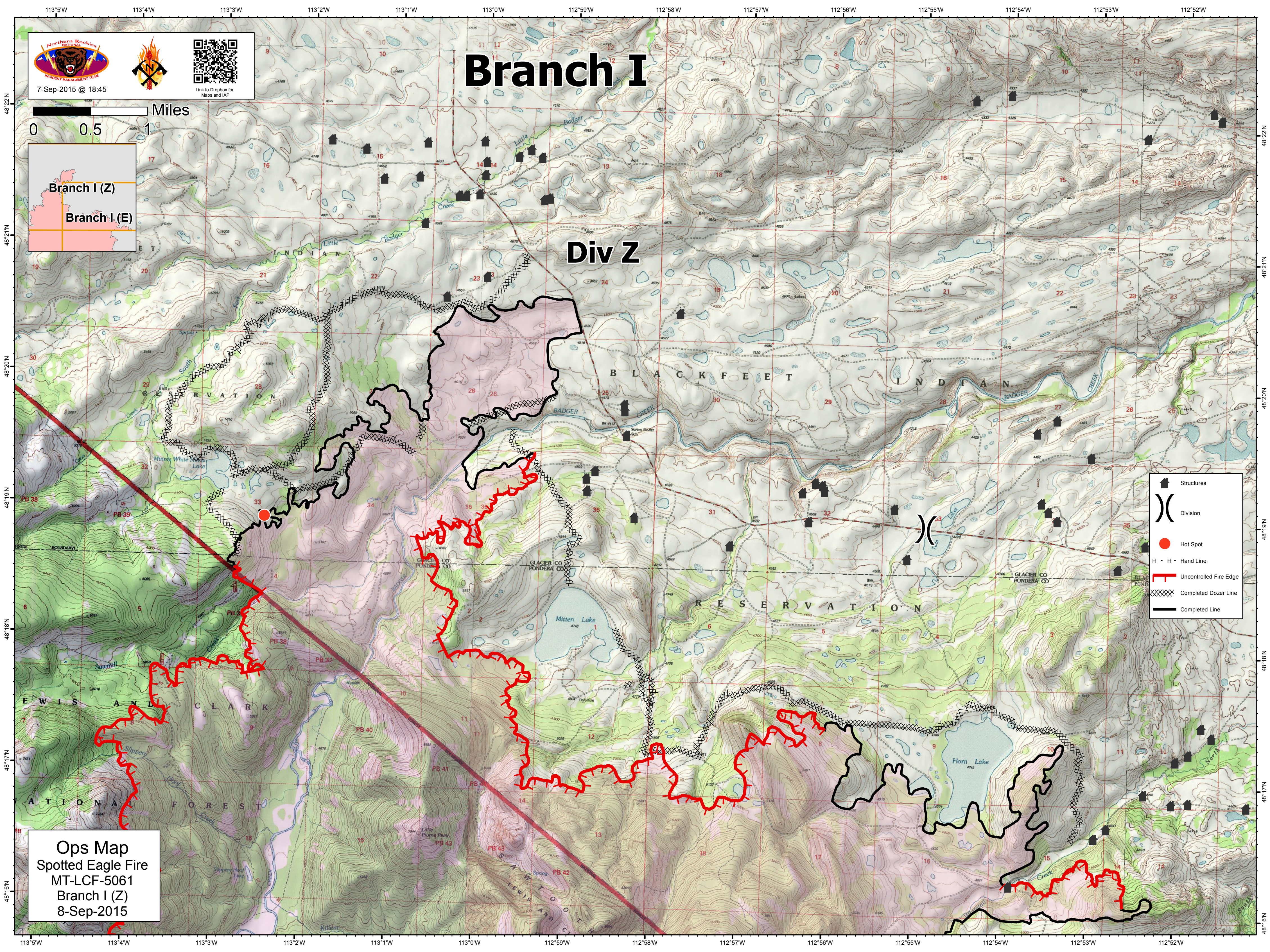
0 0.5 1



Div Z

- Structures
- Division
- Hot Spot
- H - H - Hand Line
- Uncontrolled Fire Edge
- Completed Dozer Line
- Completed Line

Ops Map
 Spotted Eagle Fire
 MT-LCF-5061
 Branch I (Z)
 8-Sep-2015



48°22'N
48°21'N
48°20'N
48°19'N
48°18'N
48°17'N
48°16'N

48°22'N
48°21'N
48°20'N
48°19'N
48°18'N
48°17'N
48°16'N