



For more information on fires on the Rocky Mountain Ranger District, scan:

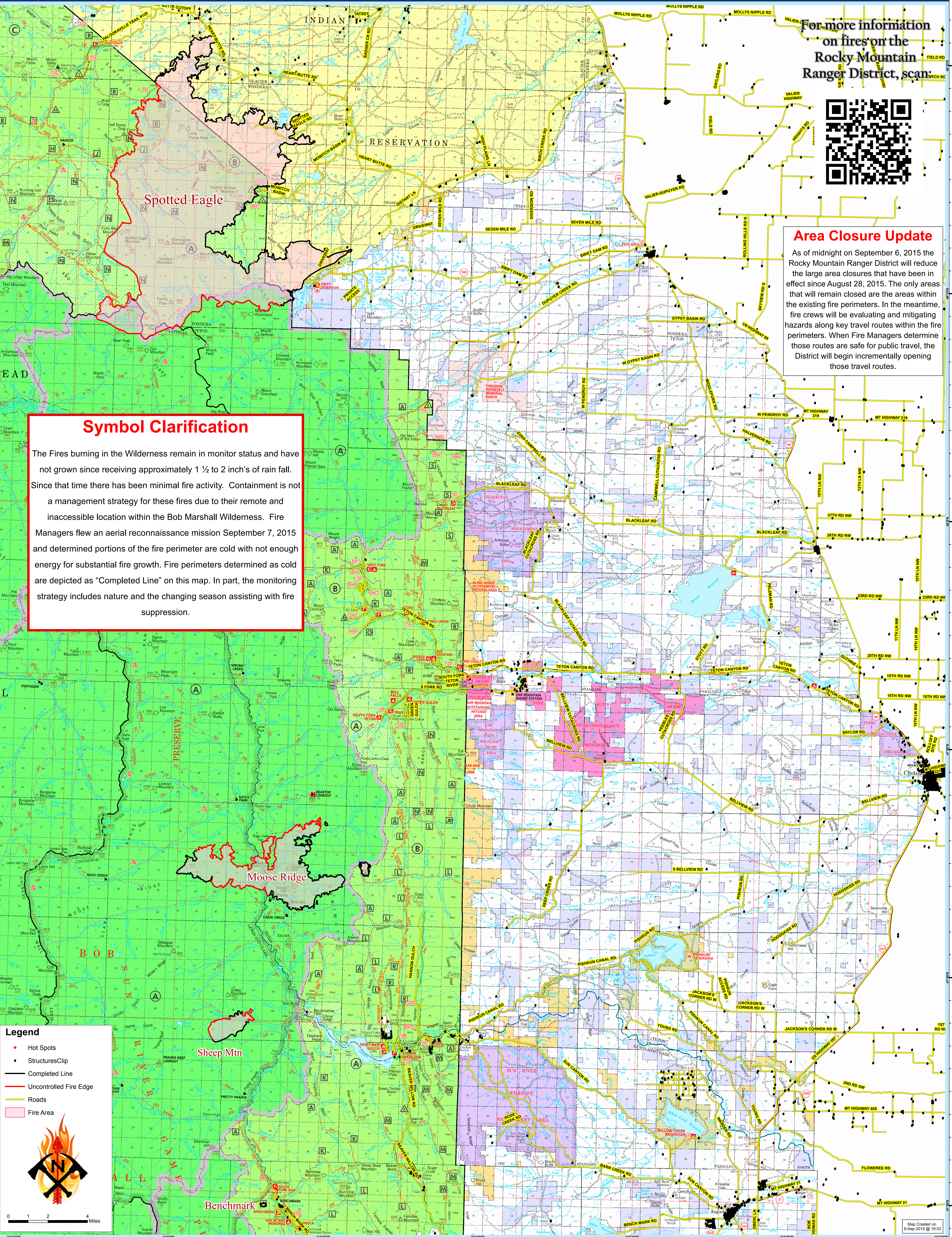


Area Closure Update

As of midnight on September 6, 2015 the Rocky Mountain Ranger District will reduce the large area closures that have been in effect since August 28, 2015. The only areas that will remain closed are the areas within the existing fire perimeters. In the meantime, fire crews will be evaluating and mitigating hazards along key travel routes within the fire perimeters. When Fire Managers determine those routes are safe for public travel, the District will begin incrementally opening those travel routes.

Symbol Clarification

The Fires burning in the Wilderness remain in monitor status and have not grown since receiving approximately 1 1/2 to 2 inch's of rain fall. Since that time there has been minimal fire activity. Containment is not a management strategy for these fires due to their remote and inaccessible location within the Bob Marshall Wilderness. Fire Managers flew an aerial reconnaissance mission September 7, 2015 and determined portions of the fire perimeter are cold with not enough energy for substantial fire growth. Fire perimeters determined as cold are depicted as "Completed Line" on this map. In part, the monitoring strategy includes nature and the changing season assisting with fire suppression.



Legend

- Hot Spots
- StructuresClip
- Completed Line
- Uncontrolled Fire Edge
- Roads
- Fire Area

0 1 2 4 Miles