

113°0'W 112°59'W 112°58'W 112°57'W 112°56'W 112°55'W 112°54'W 112°53'W 112°52'W 112°51'W 112°50'W 112°49'W 112°48'W 112°47'W

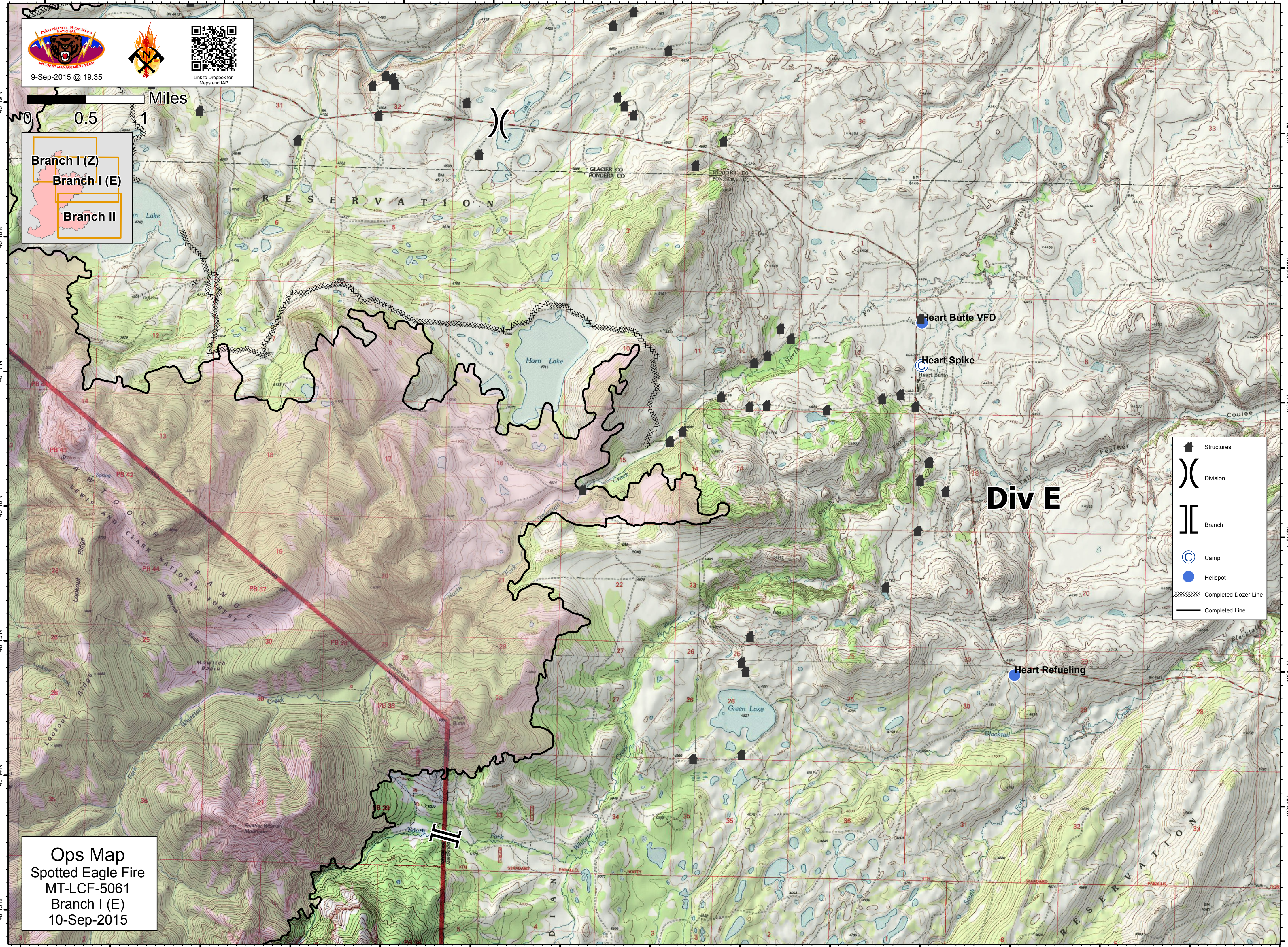
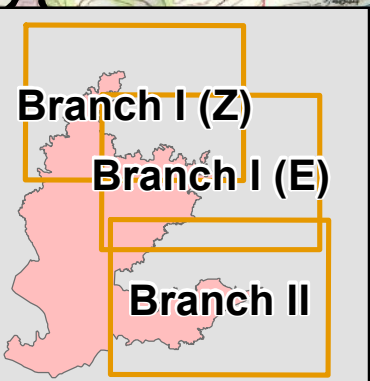


9-Sep-2015 @ 19:35






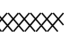




Link to Dropbox for Maps and IAP

Miles
0.5 1



Div E

-  Structures
-  Division
-  Branch
-  Camp
-  Helispot
-  Completed Dozer Line
-  Completed Line

Ops Map
Spotted Eagle Fire
MT-LCF-5061
Branch I (E)
10-Sep-2015

113°0'W 112°59'W 112°58'W 112°57'W 112°56'W 112°55'W 112°54'W 112°53'W 112°52'W 112°51'W 112°50'W 112°49'W 112°48'W 112°47'W