


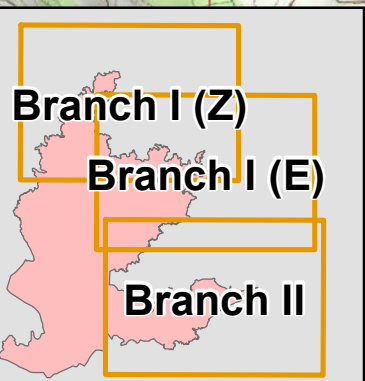
113°5'W 113°4'W 113°3'W 113°2'W 113°1'W 113°0'W 112°59'W 112°58'W 112°57'W 112°56'W 112°55'W 112°54'W 112°53'W 112°52'W



9-Sep-2015 @ 19:35



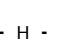





Link to Dropbox for Maps and IAP

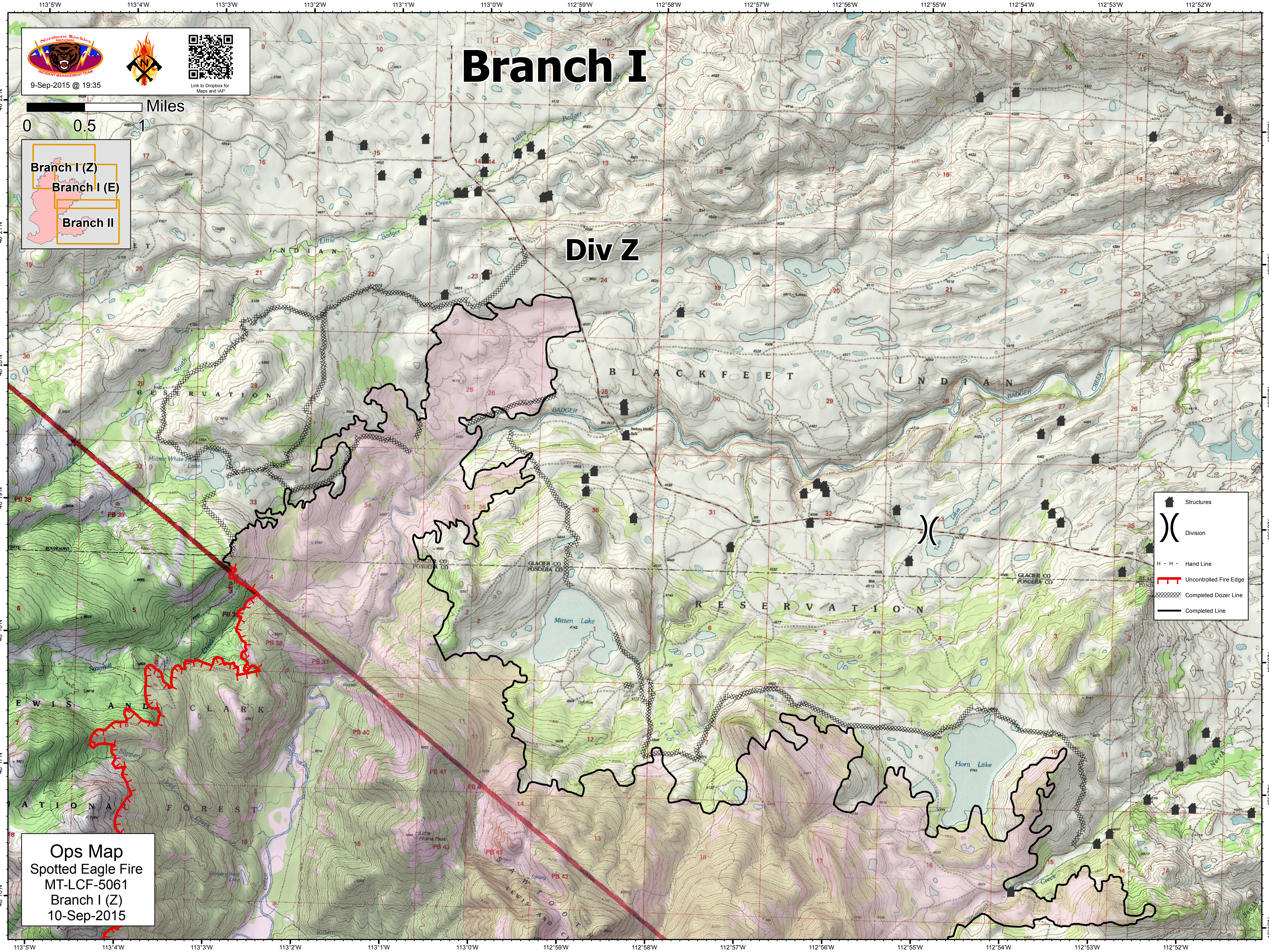


# Branch I

Div Z

	Structures
	Division
	Hand Line
	Uncontrolled Fire Edge
	Completed Dozer Line
	Completed Line

Ops Map  
Spotted Eagle Fire  
MT-LCF-5061  
Branch I (Z)  
10-Sep-2015



48°22'N  
48°21'N  
48°20'N  
48°19'N  
48°18'N  
48°17'N  
48°16'N

48°22'N  
48°21'N  
48°20'N  
48°19'N  
48°18'N  
48°17'N  
48°16'N

113°5'W 113°4'W 113°3'W 113°2'W 113°1'W 113°0'W 112°59'W 112°58'W 112°57'W 112°56'W 112°55'W 112°54'W 112°53'W 112°52'W