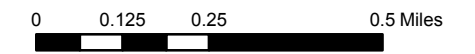
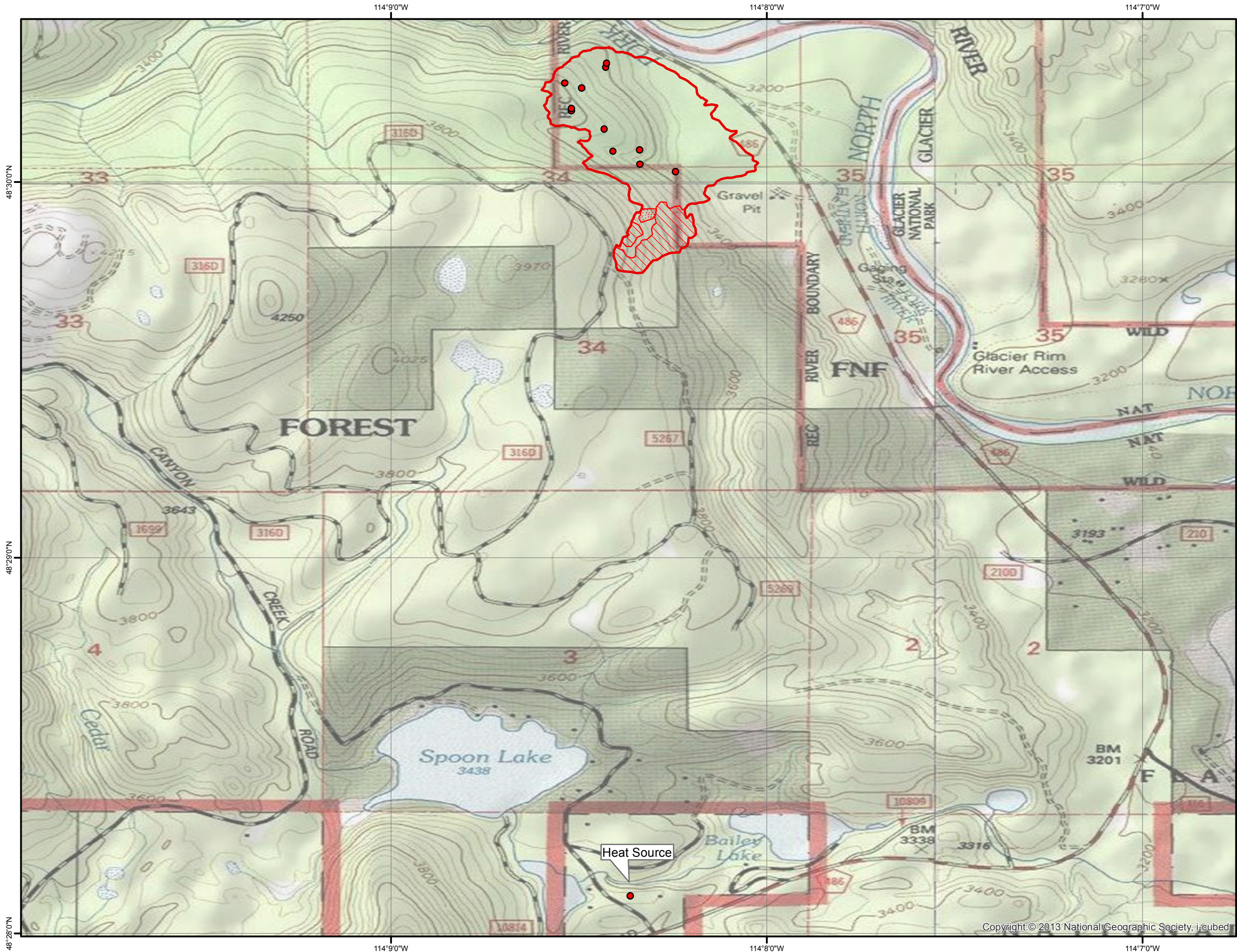


Glacier Rim Fire Infrared Heat Sources

1:17,582

- Heat Perimeter
- Intense Heat Areas
- Scattered Heat Areas
- Isolated Heat Sources

GCS North American 1983



IR Interpreter: Brian Monroe
IR interpreted acres: 96
Date: 07/06/2015
Time received the Image: 2149 hrs