



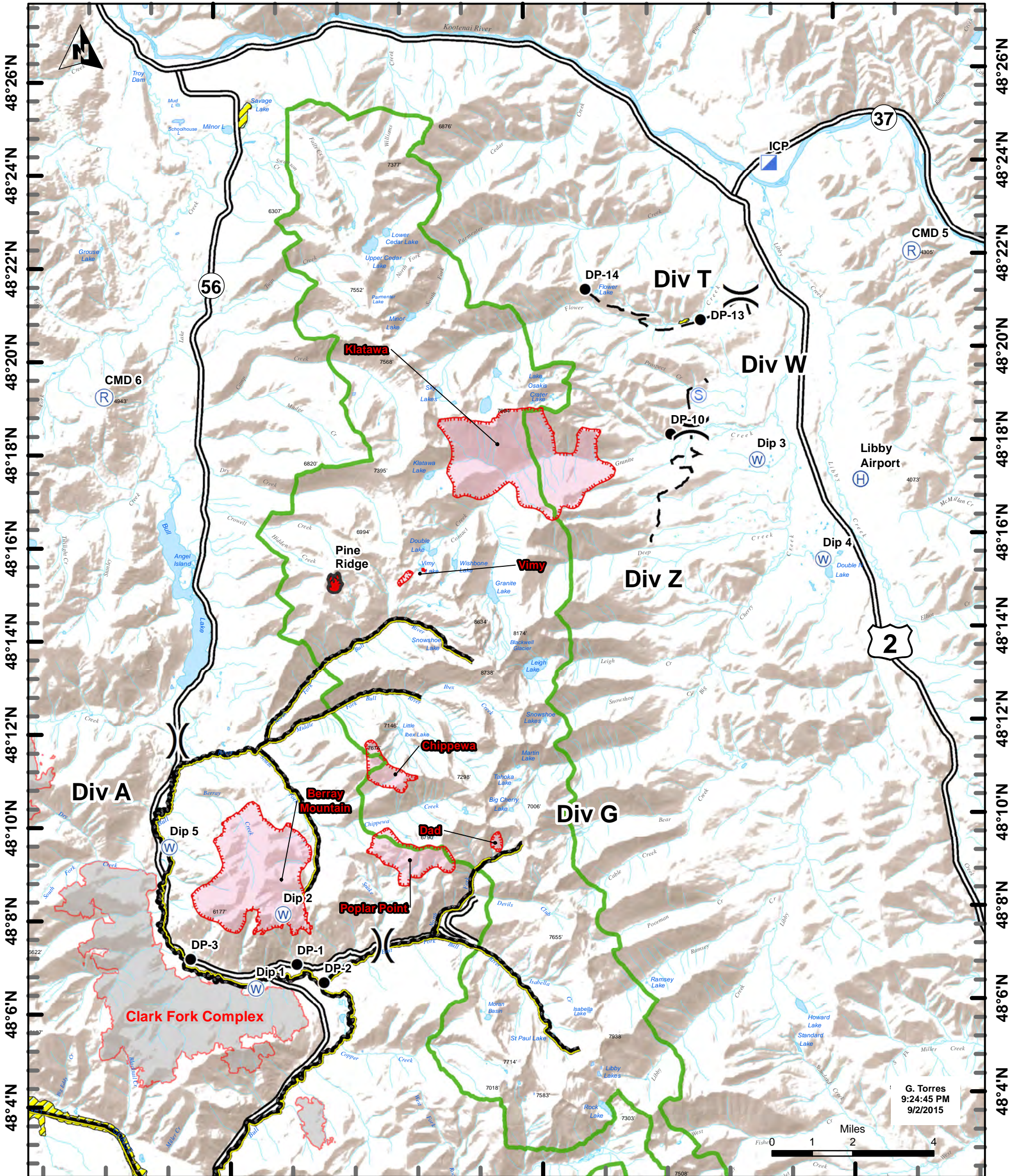
# Goat Rock Complex Air Operations

MT-KNF-000281  
September 3, 2015

115°50'W

115°40'W

115°30'W



115°50'W

115°40'W

115°30'W

Point	Point_Type	Lon_DDM	Lat_DDM
Berry Mountain	center of fire	115° 48.90' W	48° 8.45' N
Poplar Point	center of fire	115° 44.26' W	48° 9.27' N
Dad	center of fire	115° 41.29' W	48° 9.50' N
Chippewa	center of fire	115° 44.56' W	48° 10.90' N
Pine Ridge	center of fire	115° 46.36' W	48° 15.09' N
Vimy	center of fire	115° 44.07' W	48° 15.19' N
Klatawa	center of fire	115° 40.15' W	48° 18.01' N
Libby Airport	helibase	115° 29.41' W	48° 17.19' N
Dip 1	water source	115° 49.09' W	48° 6.49' N
Dip 2	water source	115° 48.19' W	48° 8.07' N
Dip 3	water source	115° 32.72' W	48° 17.62' N
Dip 4	water source	115° 30.66' W	48° 15.50' N
<b>**Dip 5</b>	water source	<b>115° 51.81' W</b>	<b>48° 9.53' N</b>

**\*\* Water source may contain aquatic exotics/invasives**

Assignment	RX Fre	RX Tone/NAC	TX Freq	TX Tone/NAC
Division A	168.2500 N	151.4	168.25000 N	151.4
Division Z	168.2000 N	151.4	168.2000 N	151.4
Division W	168.6000 N	151.4	168.6000 N	151.4
Division T	166.7250 N	151.4	166.7250 N	151.4

- Clark Fork Complex
- Helibase
- ICP
- Repeater
- Fire Location
- Drop Point
- Water Source
- No Dip Streams
- No Dip Water Sources
- Wilderness
- Roads

