



# Goat Rock Complex

MT-KNF-000281  
September 9-14, 2015  
Air Operations

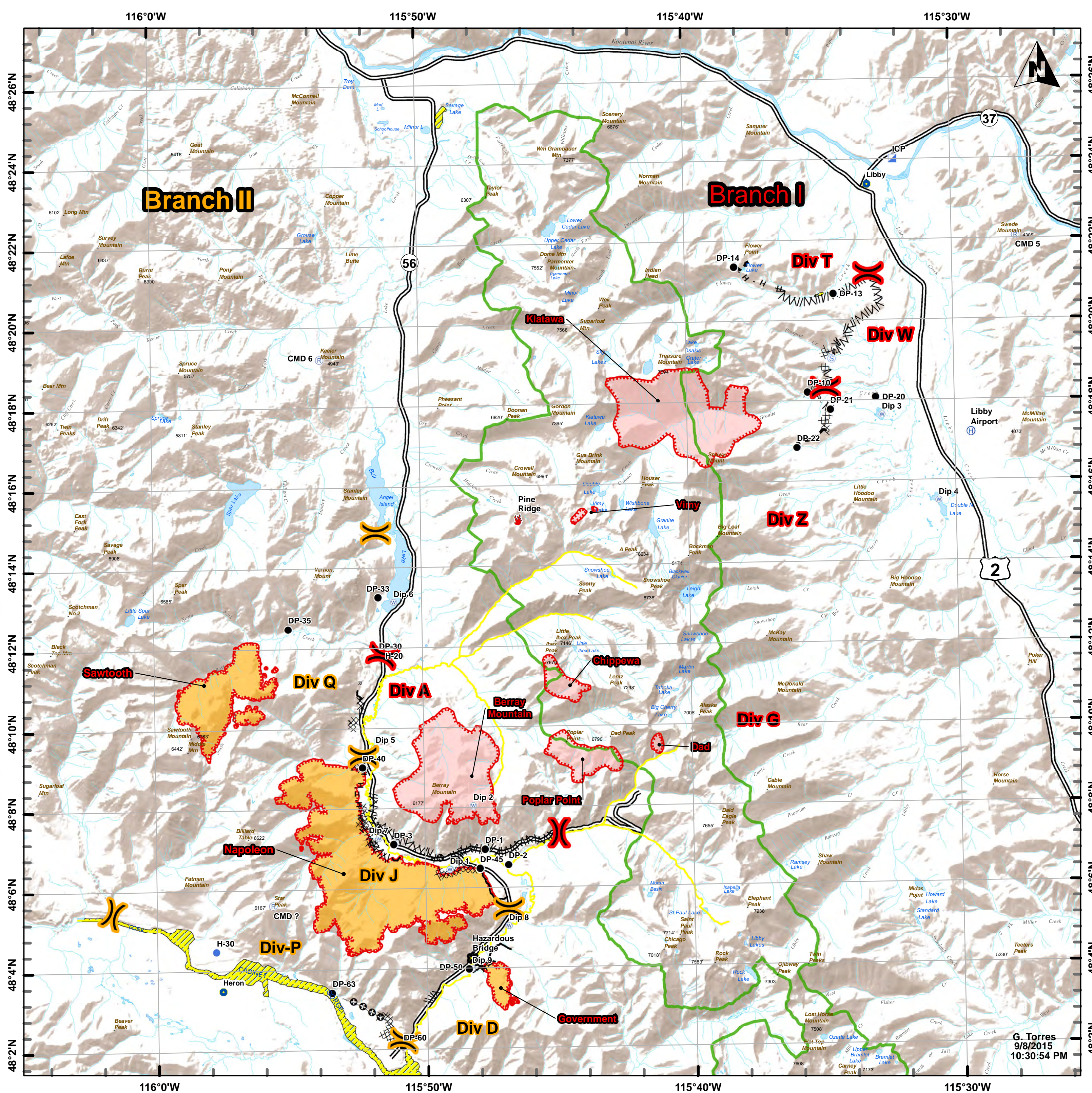
- Drop Point
- 🔥 Fire Location
- ⊕ Helibase
- ⊙ Helispot
- 🏠 Incident Command Post
- Ⓜ Repeater
- Ⓜ Staging Area
- Ⓜ Water Source
- 🌉 Bridge
- 🟡 No Dip Streams
- 🟡 No Dip Water Sources
- 🔴 Uncontrolled Fire Edge
- ⊕ Feller Buncher
- ⊗ Completed Dozer Line
- Completed Line
- Hand Line
- Road as Completed Line
- ⊗ Line Break Completed
- Planned Fire Line
- ⊗ Proposed Dozer Line
- 🟩 Wilderness

BRANCH I		
	Lat_DDM	Lon_DDM
CMD 5	48° 22.07' N	115° 27' 36.48" W
CMD 6	48° 19.21' N	115° 53' 40.86" W
ICP	48° 24.02' N	115° 32' 9.04" W
Libby Airport	48° 17.20' N	115° 29' 24.30" W
<b>DIV A</b>		
DP-1	48° 6.98' N	115° 47' 46.05" W
DP-2	48° 6.59' N	115° 46' 54.21" W
DP-3	48° 7.12' N	115° 51' 9.90" W
Dip 1	48° 6.49' N	115° 49' 5.65" W
Dip 2	48° 8.07' N	115° 48' 11.44" W
Dip 5	48° 9.54' N	115° 51' 48.00" W
<b>DIV G</b>		
DP-13	48° 20.68' N	115° 34' 27.34" W
DP-14	48° 21.37' N	115° 38' 8.93" W
<b>DIV W</b>		
Staging Area	48° 19.06' N	115° 34' 33.30" W
DP-10	48° 18.24' N	115° 35' 28.60" W
<b>DIV Z</b>		
DP-20	48° 18.10' N	115° 32' 56.16" W
DP-21	48° 17.79' N	115° 34' 38.09" W
DP-22	48° 16.85' N	115° 35' 54.24" W
Dip 3	48° 17.65' N	115° 32' 42.96" W
Dip 4	48° 15.50' N	115° 30' 39.39" W

BRANCH II		
	Lat_DDM	Lon_DDM
CMD ?	48° 5.63' N	115° 55' 40.66" W
<b>DIV Q</b>		
DP-30	48° 11.84' N	115° 51' 37.46" W
DP-33	48° 13.28' N	115° 51' 37.11" W
DP-35	48° 12.51' N	115° 54' 59.26" W
Dip 7	48° 7.28' N	115° 51' 43.66" W
DP-40	48° 9.05' N	115° 52' 17.47" W
DP-45	48° 6.50' N	115° 47' 58.09" W
Dip 6	48° 13.16' N	115° 51' 2.96" W
H-20	48° 11.84' N	115° 51' 37.30" W
<b>DIV J</b>		
Dip 8	48° 5.07' N	115° 46' 55.52" W
<b>DIV D</b>		
DP-50	48° 4.00' N	115° 48' 25.72" W
Dip 9	48° 4.02' N	115° 48' 19.30" W
Hazardous Bridge	48° 4.27' N	115° 48' 18.30" W
<b>DIV P</b>		
DP-60	48° 2.09' N	115° 50' 55.26" W
DP-63	48° 3.44' N	115° 53' 31.69" W
H-30	48° 4.49' N	115° 57' 48.34" W

Center of Fire			
	Lon_DDM	Lat_DDM	
<b>Branch I</b>			
Berry Mountain	115°48.90' W	48°8.45' N	
Poplar Point	115°44.26' W	48°9.27' N	
Dad	115°41.29' W	48°9.50' N	
Chippewa	115°44.56' W	48°10.90' N	
Pine Ridge	115°46.36' W	48°15.09' N	
Vimy	115°44.07' W	48°15.19' N	
Klatawa	115°40.15' W	48°18.01' N	
<b>Branch II</b>			
Sawtooth	115°57.72' W	48°10.94' N	
Napoleon	115°52.05' W	48°6.04' N	
Government	115°47.35' W	48°3.67' N	

Assignment	RX Fre	RX Tone/NAC	TX Freq	TX Tone/NAC
Division A	168.25000N	151.4	168.25000N	151.4
Division Z	168.2000N	151.4	168.2000N	151.4
Division W	168.6000N	151.4	168.6000N	151.4
Division T	166.7250N	151.4	166.7250N	151.4



G. Torres  
9/8/2015  
10:30:54 PM