



Goat Rock Complex

MT-KNF-000281

September 11-14, 2015

Air Operations

- Dip and Rinse
- Drop Point
- Helispot
- Staging Area
- Dip and Rinse
- Fire Location
- ICP
- Water Source
- MediVac Site
- Helibase
- Repeater
- Bridge
- Wilderness

Helibase	Libby Airport	48° 17.20' N	115° 29' 24.30" W
	A/A Frequency	127.25	
	A/G Frequency	166.3625	

BRANCH I			
Center of Fire			
Branch I	Berry Mountain	115° 48.90' W	48° 45.45' N
	Poplar Point	115° 44.26' W	48° 9.27' N
	Dad	115° 41.29' W	48° 9.50' N
	Chippewa	115° 44.56' W	48° 10.90' N
	Pine Ridge	115° 46.36' W	48° 15.09' N
	Vimy	115° 44.07' W	48° 15.19' N
	Klatawa	115° 40.15' W	48° 18.01' N

DIV A			
	DP-1	48° 6.98' N	115° 47' 46.05" W
	DP-2	48° 6.59' N	115° 46' 54.21" W
	DP-3	48° 7.12' N	115° 51' 9.90" W
	Dip 1	48° 6.49' N	115° 49' 5.65" W
	Dip 2	48° 8.07' N	115° 48' 11.44" W
	Dip 5	48° 9.54' N	115° 51' 48.00" W

Radio Frequencies Division A			
RX Fre	RX Tone/NAC	TX Freq	TX Tone/NAC
168.2500N	151.4	168.2500N	151.4

DIV T			
	DP-13	48° 20.68' N	115° 34' 27.34" W
	DP-14	48° 21.37' N	115° 38' 8.93" W

Radio Frequencies Division T			
RX Fre	RX Tone/NAC	TX Freq	TX Tone/NAC
168.2500N	151.4	168.2500N	151.4

DIV W			
	Staging Area	48° 19.06' N	115° 34' 33.30" W
	DP-10	48° 18.24' N	115° 35' 28.60" W

Radio Frequencies Division W			
RX Fre	RX Tone/NAC	TX Freq	TX Tone/NAC
168.6000N	151.4	168.6000N	151.4

DIV Z			
	DP-20	48° 18.10' N	115° 32' 56.16" W
	DP-21	48° 17.79' N	115° 34' 38.09" W
	DP-22	48° 16.85' N	115° 35' 54.24" W
	Dip 3	48° 17.65' N	115° 32' 42.96" W
	Dip 4	48° 15.50' N	115° 30' 39.39" W

Radio Frequencies Division Z			
RX Fre	RX Tone/NAC	TX Freq	TX Tone/NAC
168.2000N	151.4	168.2000N	151.4
168.6000N	151.4	168.6000N	151.4

BRANCH II			
Center of Fire			
Branch II	Sawtooth	115° 57.72' W	48° 10.94' N
	Napoleon	115° 52.05' W	48° 6.04' N
	Government	115° 47.35' W	48° 3.67' N

DIV Q			
	DP-30	48° 11.84' N	115° 51' 37.46" W
	DP-33	48° 13.28' N	115° 51' 37.11" W
	DP-35	48° 12.51' N	115° 54' 59.26" W
	Dip 7	48° 7.28' N	115° 51' 43.66" W
	Dip 6	48° 13.16' N	115° 51' 2.96" W
	H-20	48° 11.84' N	115° 51' 37.30" W

Radio Frequencies Division Q			
RX Fre	RX Tone/NAC	TX Freq	TX Tone/NAC
168.2000N	151.4	168.2000N	151.4

DIV J			
	Dip 8	48° 5.07' N	115° 46' 55.52" W
	DP-40	48° 9.05' N	115° 52' 17.47" W
	DP-44	48° 6.744' N	115° 48' 66.2' W
	DP-45	48° 6.50' N	115° 47' 58.09" W
	MediVac 1	48° 6.752' N	115° 48' 78.9' W
	MediVac 2	48° 7.725' N	115° 52' 14.2' W
	MediVac 3	48° 9.402' N	115° 52.467' W

Radio Frequencies Division J			
RX Fre	RX Tone/NAC	TX Freq	TX Tone/NAC
166.7250N	151.4	166.7250N	151.4

DIV D			
	DP-50	48° 4.00' N	115° 48' 25.72" W
	Dip 9	48° 4.02' N	115° 48' 19.30" W
	Hazardous Bridge	48° 4.27' N	115° 48' 18.30" W

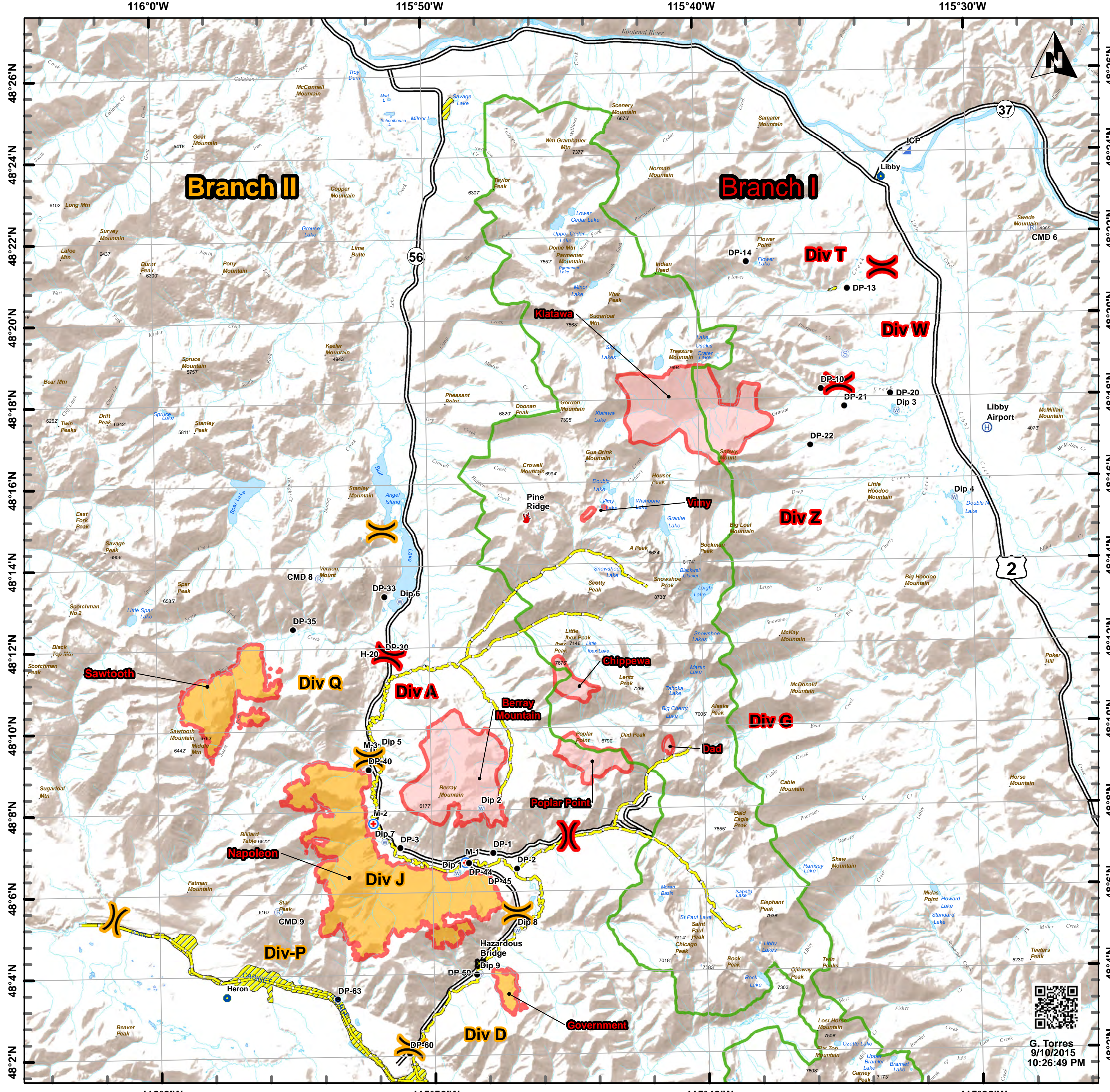
Radio Frequencies Division D			
RX Fre	RX Tone/NAC	TX Freq	TX Tone/NAC
168.2000N	151.4	168.2000N	151.4

DIV P			
	DP-60	48° 2.09' N	115° 50' 55.26" W
	DP-63	48° 3.44' N	115° 53' 31.69" W
	H-30	48° 4.49' N	115° 57' 48.34" W

Radio Frequencies Division P			
RX Fre	RX Tone/NAC	TX Freq	TX Tone/NAC
168.6000N	151.4	168.6000N	151.4

Repeaters			
	CMD 9	48° 05.603' N	115° 55' 660" W
	CMD 8	48° 13.756' N	115° 53' 989" W
	CMD 5	48° 29.165' N	115° 47' 744" W
	CMD 6	48° 22.071' N	115° 27' 608" W

Miles



G. Torres
9/10/2015
10:26:49 PM