



Grizzly Complex



IDIPF-000927

Planning Map

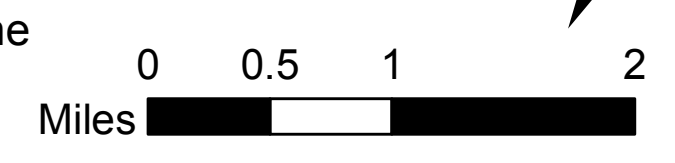
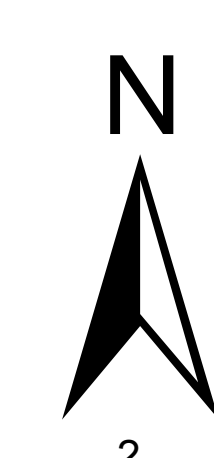


8/22/2015; Day Shift

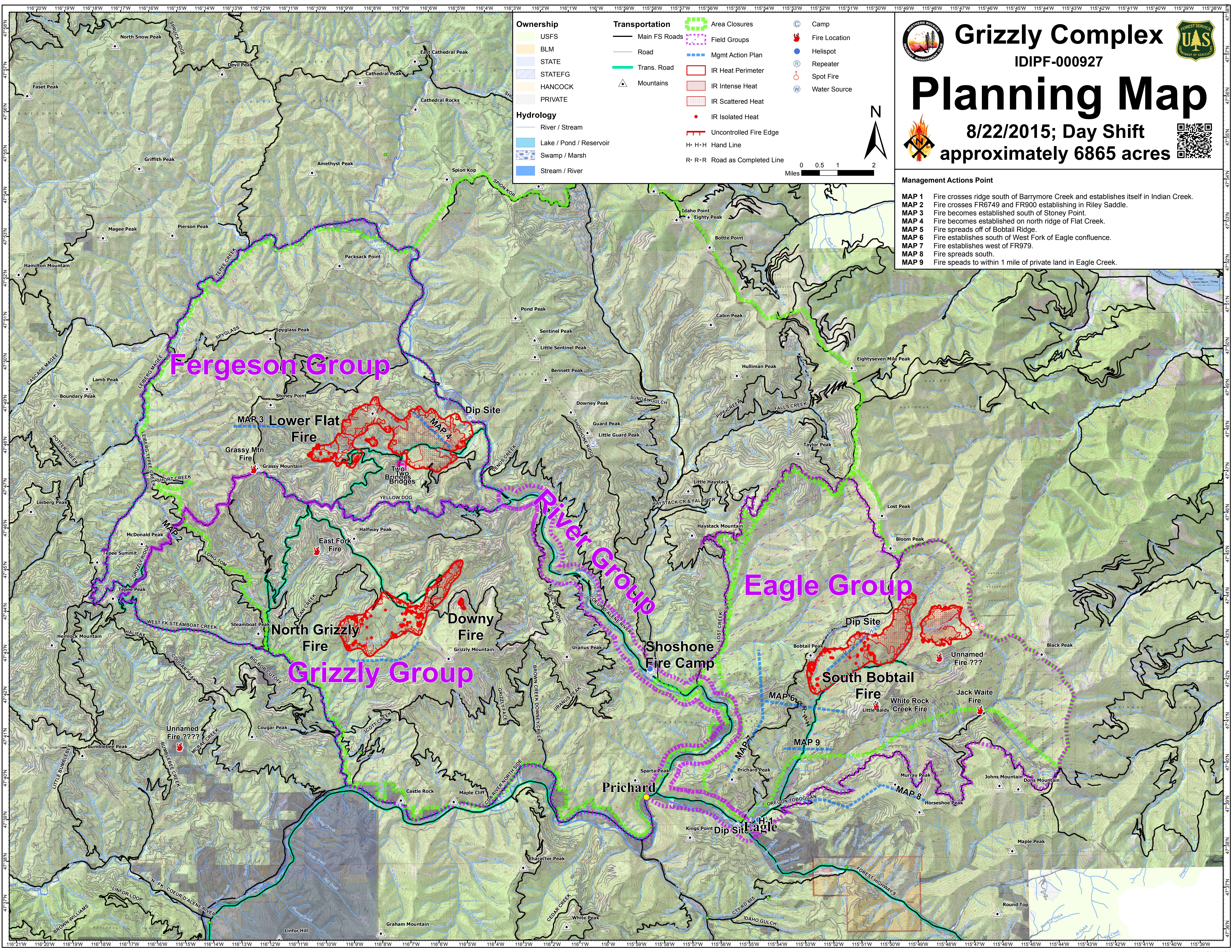
approximately 6865 acres



Ownership	Transportation	Area Closures	Other
USFS	Main FS Roads	Field Groups	Camp
BLM	Road	Mgmt Action Plan	Fire Location
STATE	Trans. Road	IR Heat Perimeter	Helispot
STATEFG	Mountains	IR Intense Heat	Repeater
HANCOCK		IR Scattered Heat	Spot Fire
PRIVATE		IR Isolated Heat	Water Source
Hydrology		Uncontrolled Fire Edge	
River / Stream		H-H Hand Line	
Lake / Pond / Reservoir		R-R Road as Completed Line	
Swamp / Marsh			
Stream / River			



- Management Actions Point**
- MAP 1 Fire crosses ridge south of Barrymore Creek and establishes itself in Indian Creek.
 - MAP 2 Fire crosses FR6749 and FR900 establishing in Riley Saddle.
 - MAP 3 Fire becomes established south of Stoney Point.
 - MAP 4 Fire becomes established on north ridge of Flat Creek.
 - MAP 5 Fire spreads off of Bobtail Ridge.
 - MAP 6 Fire establishes south of West Fork of Eagle confluence.
 - MAP 7 Fire establishes west of FR979.
 - MAP 8 Fire spreads south.
 - MAP 9 Fire spreads to within 1 mile of private land in Eagle Creek.



Fergeson Group

Grizzly Group

River Group

Eagle Group

MAP 3 Lower Flat Fire

Downy Fire

Shoshone Fire Camp

South Bobtail Fire

Prichard

Eagle