

116°12'0"W 116°11'0"W 116°10'0"W 116°9'0"W 116°8'0"W 116°7'0"W 116°6'0"W 116°5'0"W 116°4'0"W 116°3'0"W 116°2'0"W

47°46'0"N
47°45'0"N
47°44'0"N
47°43'0"N
47°42'0"N

47°46'0"N
47°45'0"N
47°44'0"N
47°43'0"N
47°42'0"N

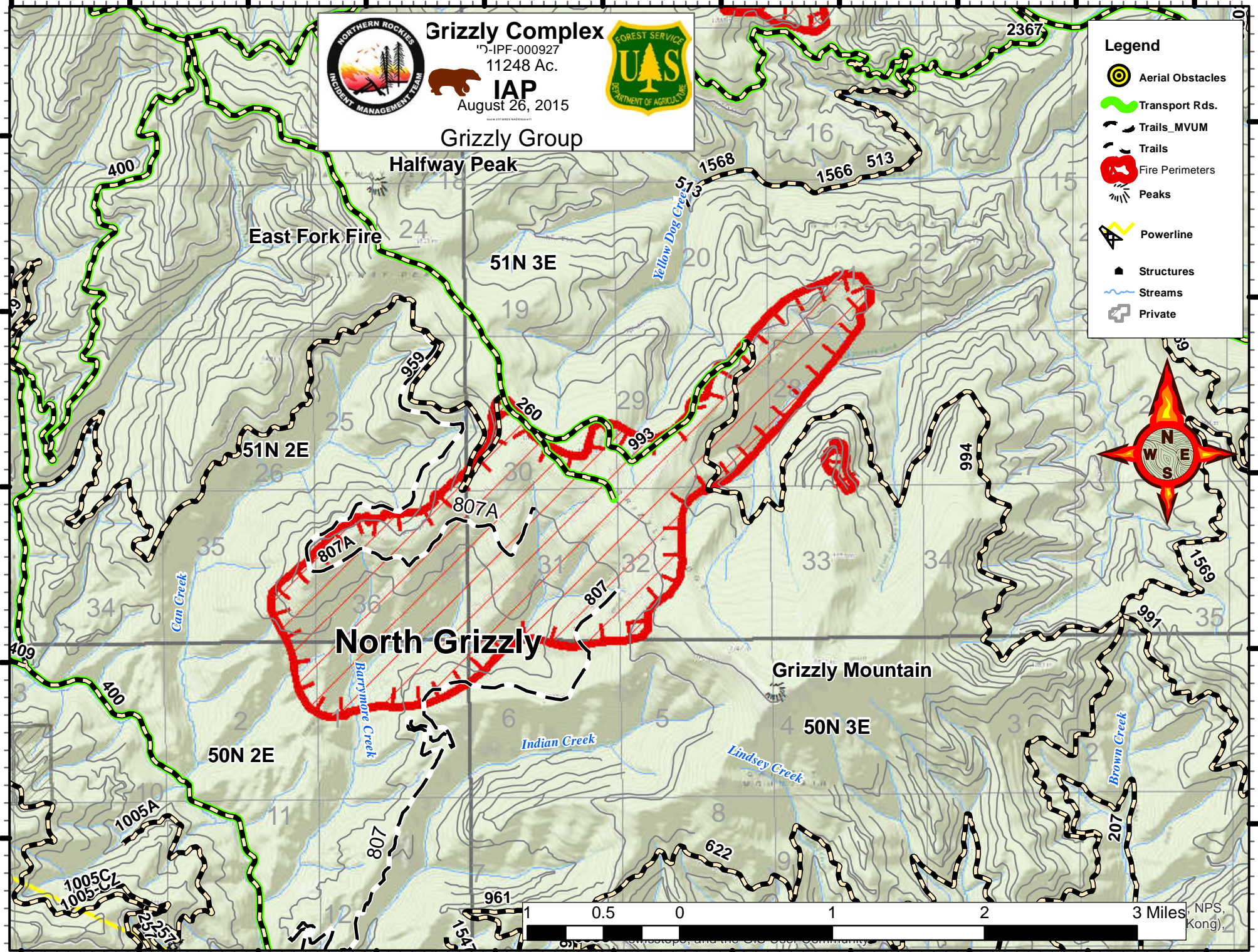
Grizzly Complex
 17-IPF-000927
 11248 Ac.
IAP
 August 26, 2015
Grizzly Group

Legend

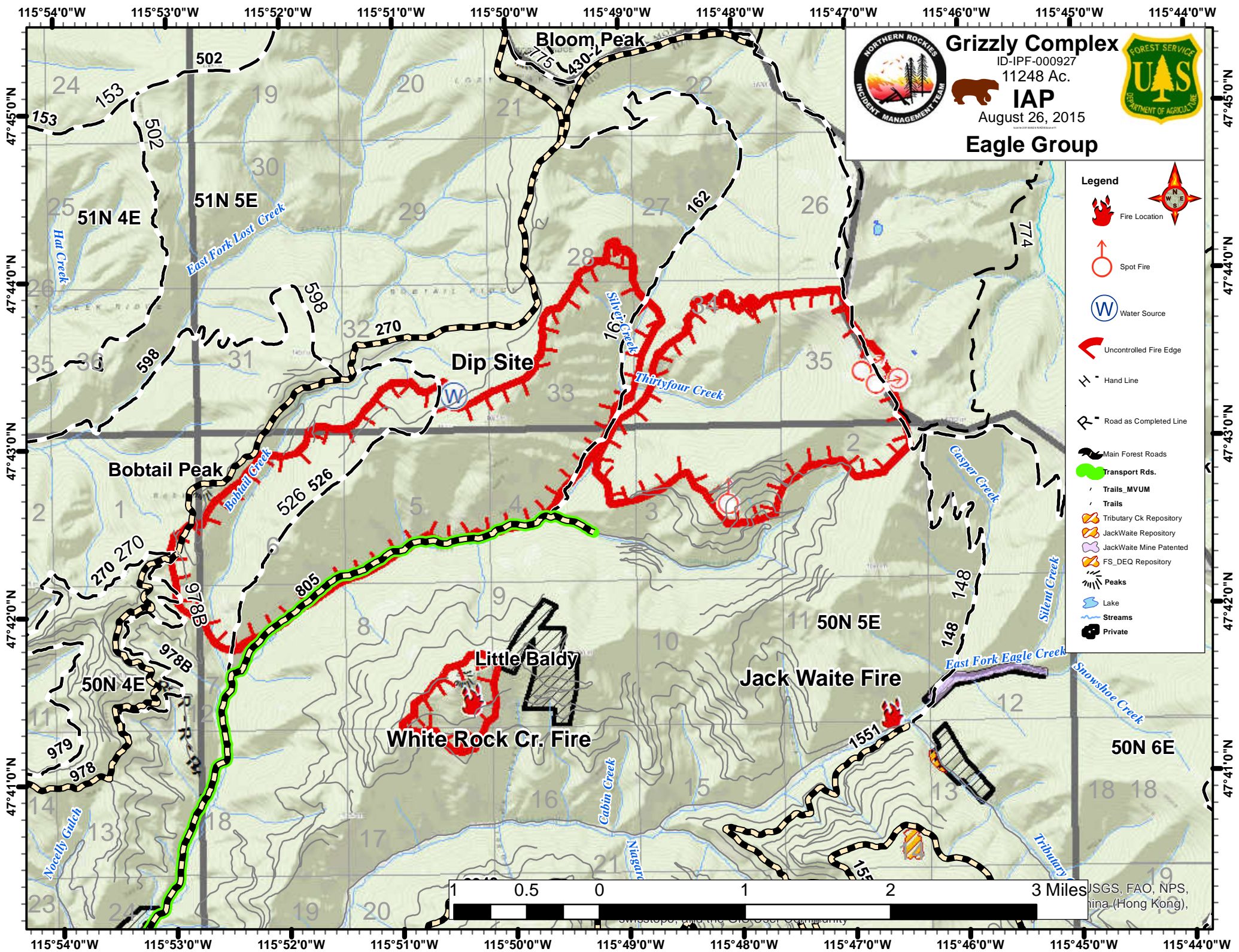
- Aerial Obstacles
- Transport Rds.
- Trails_MVUM
- Trails
- Fire Perimeters
- Peaks
- Powerline
- Structures
- Streams
- Private



116°12'0"W 116°11'0"W 116°10'0"W 116°9'0"W 116°8'0"W 116°7'0"W 116°6'0"W 116°5'0"W 116°4'0"W 116°3'0"W 116°2'0"W



NPS, Kong)



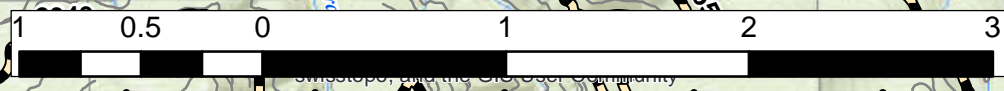
Grizzly Complex
 ID-IPF-000927
 11248 Ac.
IAP
 August 26, 2015



Eagle Group

Legend

- Fire Location
- Spot Fire
- Water Source
- Uncontrolled Fire Edge
- Hand Line
- Road as Completed Line
- Main Forest Roads
- Transport Rds.
- Trails_MVUM
- Trails
- Tributary Ck Repository
- JackWaite Repository
- JackWaite Mine Patent
- FS_DEQ Repository
- Peaks
- Lake
- Streams
- Private



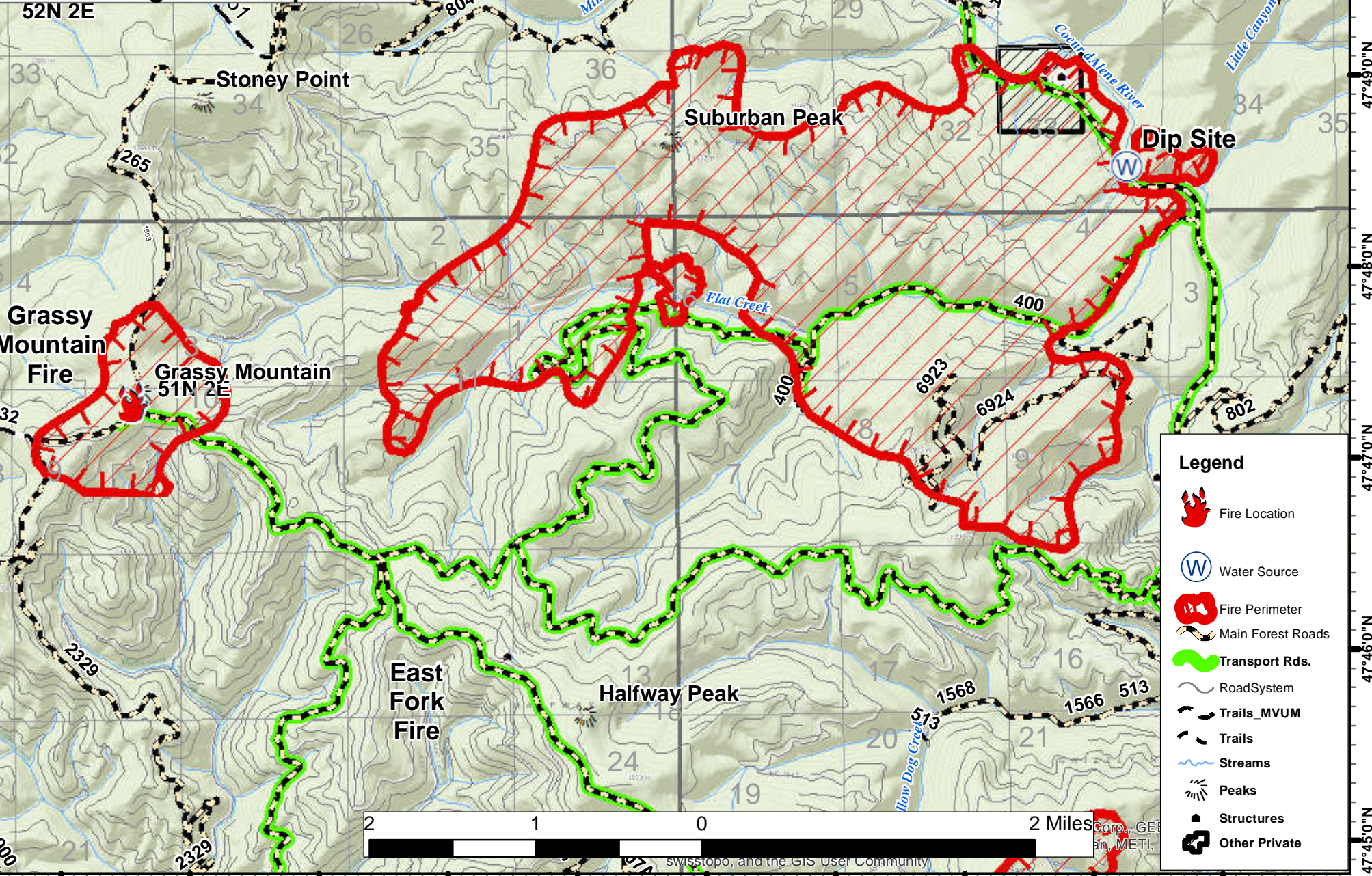
USGS, FAO, NPS,
 China (Hong Kong),

116°13'0"W 116°12'0"W 116°11'0"W 116°10'0"W 116°9'0"W 116°8'0"W 116°7'0"W 116°6'0"W 116°5'0"W 116°4'0"W 116°3'0"W

47°50'0"N 47°49'0"N 47°48'0"N 47°47'0"N 47°46'0"N 47°45'0"N

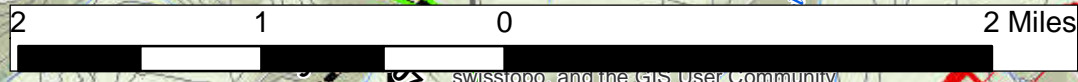


Grizzly Complex
ID-IPF-000927
11248 Ac.
IAP
August 26, 2015
Ferguson Group



Legend

- Fire Location
- Water Source
- Fire Perimeter
- Main Forest Roads
- Transport Rds.
- Road System
- Trails_MVUM
- Trails
- Streams
- Peaks
- Structures
- Other Private



swisstopo, and the GIS User Community

Corporation, GEI
Inc., METI,