

116°12'0"W 116°11'0"W 116°10'0"W 116°9'0"W 116°8'0"W 116°7'0"W 116°6'0"W 116°5'0"W 116°4'0"W 116°3'0"W 116°2'0"W

47°46'0"N
47°45'0"N
47°44'0"N
47°43'0"N
47°42'0"N

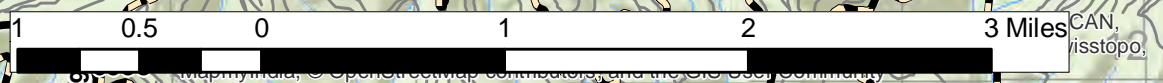
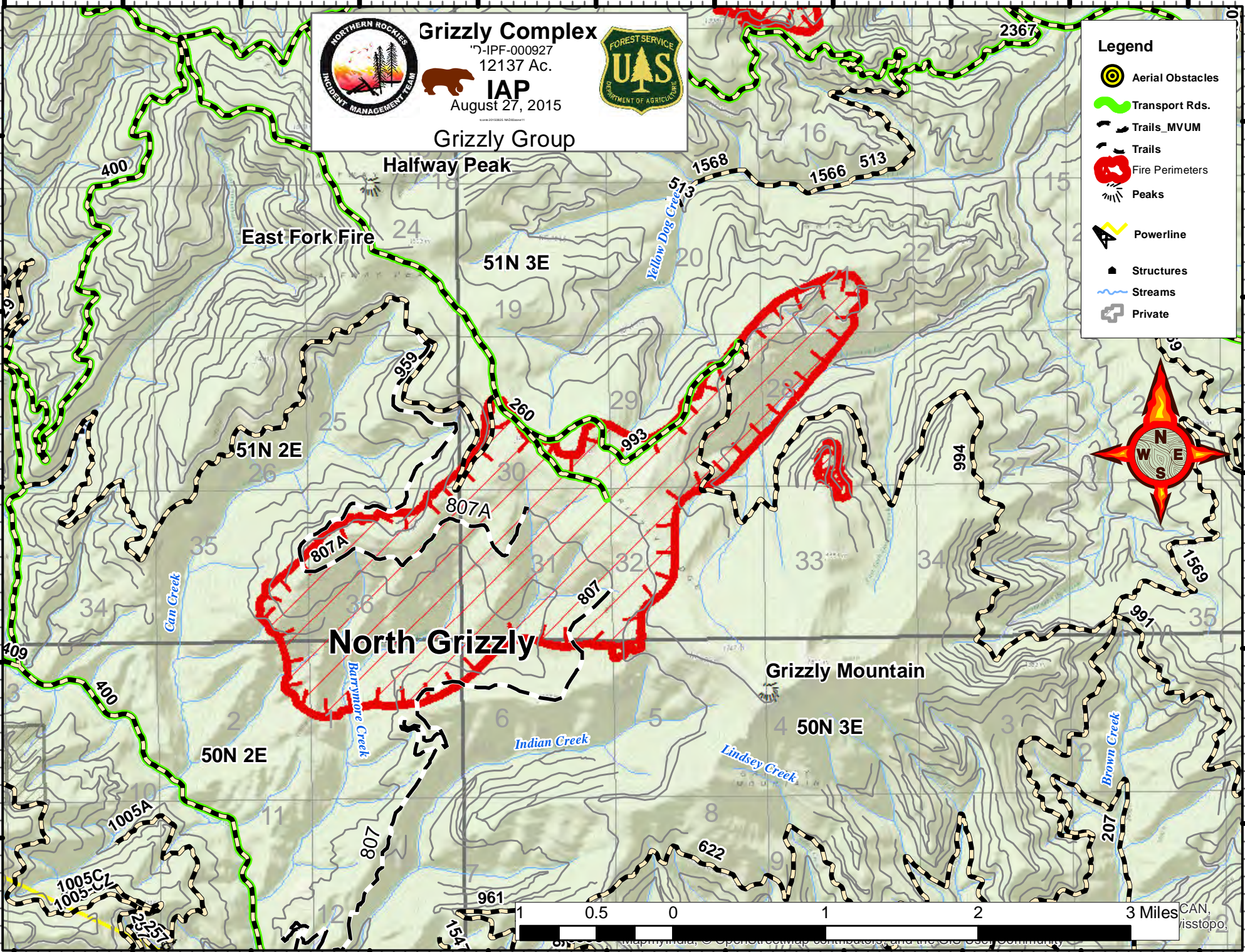
47°46'0"N
47°45'0"N
47°44'0"N
47°43'0"N
47°42'0"N

Grizzly Complex
 17-IPF-000927
 12137 Ac.
IAP
 August 27, 2015
Grizzly Group



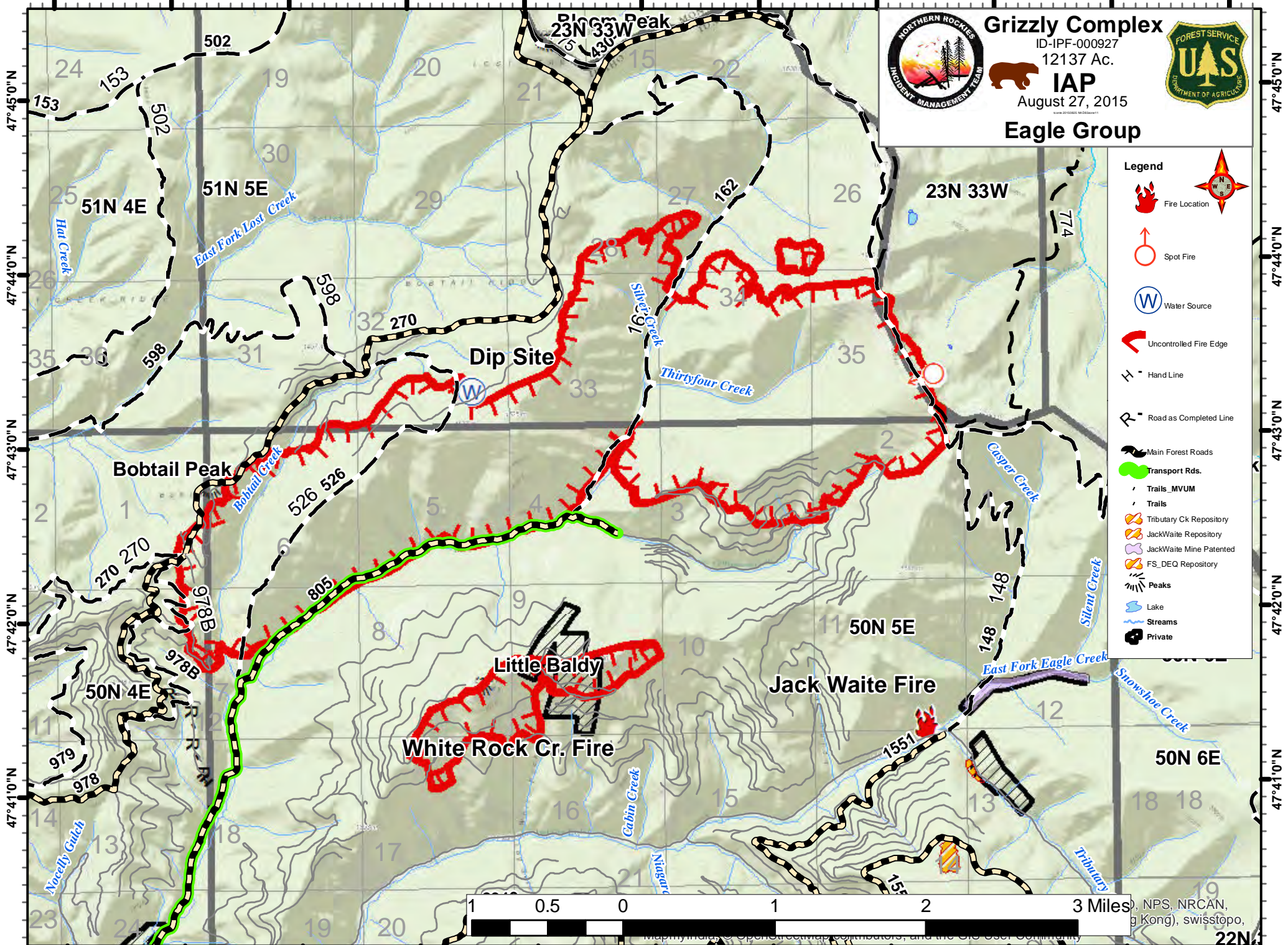

Legend

- Aerial Obstacles
- Transport Rds.
- Trails_MVUM
- Trails
- Fire Perimeters
- Peaks
- Powerline
- Structures
- Streams
- Private



116°12'0"W 116°11'0"W 116°10'0"W 116°9'0"W 116°8'0"W 116°7'0"W 116°6'0"W 116°5'0"W 116°4'0"W 116°3'0"W 116°2'0"W

115°54'0"W 115°53'0"W 115°52'0"W 115°51'0"W 115°50'0"W 115°49'0"W 115°48'0"W 115°47'0"W 115°46'0"W 115°45'0"W 115°44'0"W



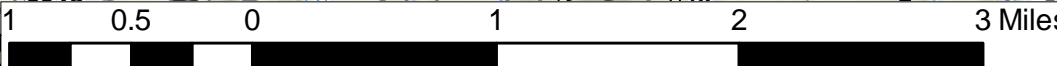
Grizzly Complex
ID-IPF-000927
12137 Ac.
IAP
August 27, 2015



Eagle Group

Legend

- Fire Location
- Spot Fire
- Water Source
- Uncontrolled Fire Edge
- Hand Line
- Road as Completed Line
- Main Forest Roads
- Transport Rds.
- Trails
- Trails_MVUM
- Tributary Ck Repository
- JackWaite Repository
- JackWaite Mine Patented
- FS_DEQ Repository
- Peaks
- Lake
- Streams
- Private



NPS, NRCAN, (g Kong), swisstopo, 22N

115°54'0"W 115°53'0"W 115°52'0"W 115°51'0"W 115°50'0"W 115°49'0"W 115°48'0"W 115°47'0"W 115°46'0"W 115°45'0"W 115°44'0"W

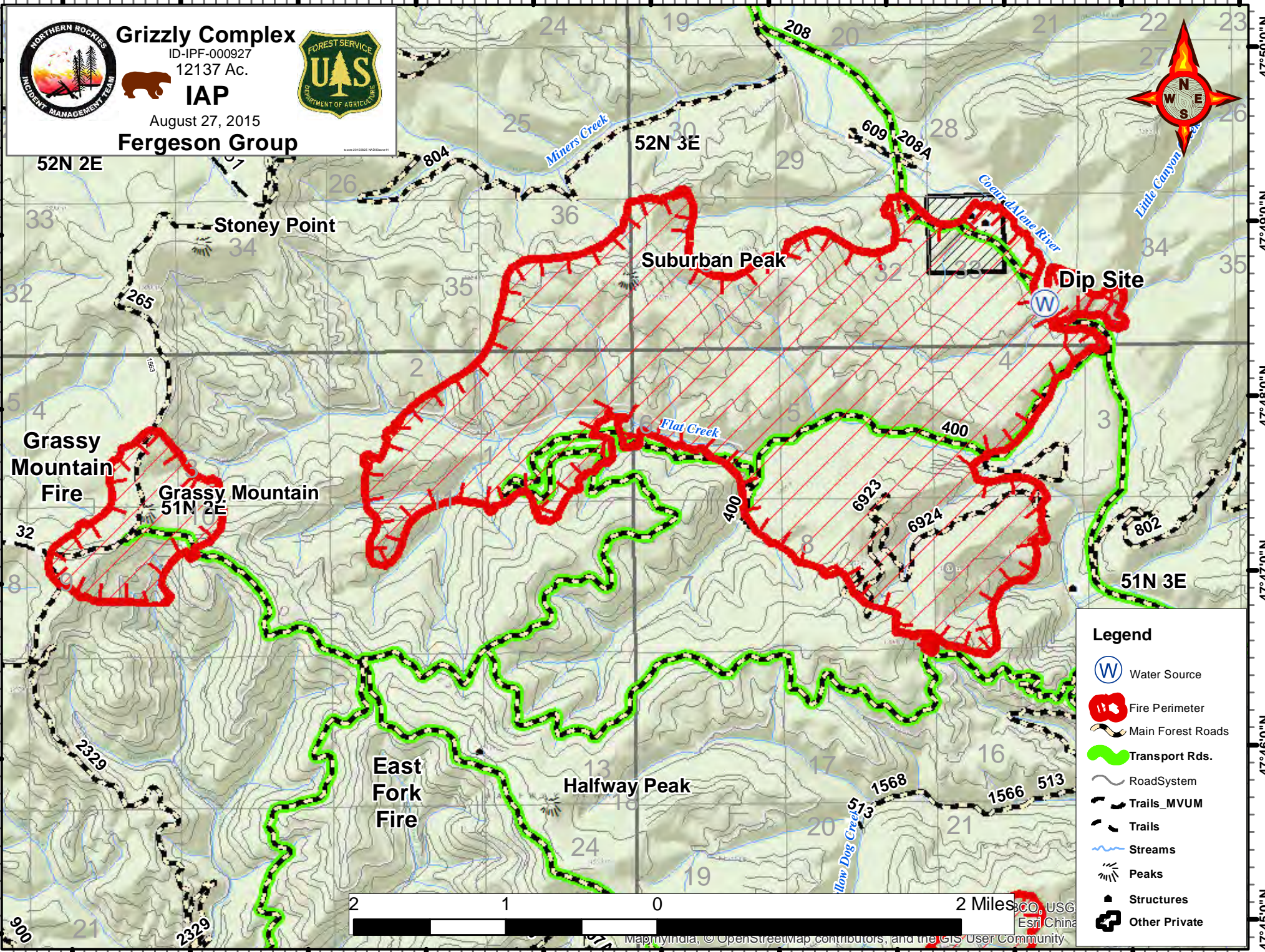
116°13'0"W 116°12'0"W 116°11'0"W 116°10'0"W 116°9'0"W 116°8'0"W 116°7'0"W 116°6'0"W 116°5'0"W 116°4'0"W 116°3'0"W



Grizzly Complex
ID-IPF-000927
12137 Ac.
IAP
August 27, 2015
Ferguson Group



47°50'0"N
47°49'0"N
47°48'0"N
47°47'0"N
47°46'0"N
47°45'0"N



Legend

- Water Source
- Fire Perimeter
- Main Forest Roads
- Transport Rds.
- Road System
- Trails_MVUM
- Trails
- Streams
- Peaks
- Structures
- Other Private

