

Management Action Points:

- MAP 10 Fire becomes established from west ridge of Barrymore Creek to Eighty Day Saddle approximately 2 miles north of BPA transmission line.
- MAP 11 Fire moves to within approximately 1 mile of private land in Teepee Creek and / or private land and other improvements around Magee Ranger Station.
- MAP 12 Fire becomes established within approximately 2 miles of the MacPherson's ranch private property.
- MAP 13 Fire spreads to the south and east past Brown Creek, Uranus Peak and Kit Price Campground.
- MAP 14 Fire becomes established west of the 978 road and / or near the bottom of Lost Creek drainage.
- MAP 15 The fire becomes established south Bobtail and Little Baldy Peaks.
- MAP 16 Fire becomes established south of Murray Peak - Horseshoe Peak - Maple Peak ridge.
- MAP 17 Fire crosses the Montana state line.
- MAP 18 Fire becomes established in Black Creek, Granite Creek, and FR 322.
- MAP 19 Fire becomes established on Shoshone Creek from Pine Flat Creek north to junction of FR 412 and FR 430
- MAP 20 Fire becomes established on Ulm Peak south to Eighty Peak then south of Bottle Point

Shoshone Spike Camp

Eagle Group

Dip Site

South Bobtail Fire

South Bobtail Fire

White Rock Fire

Jack Waite Fire

COEUR D'ALENE

COEUR D'ALENE

NATIONAL FOREST

NATIONAL FOREST

KANIKSU NATIONAL FOREST

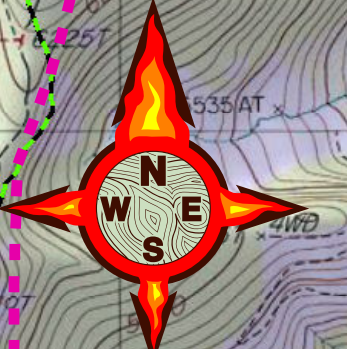
NATIONAL FOREST

River Group

Eagle

Legend

- Field_Groups
- Mine Waste Repository
- JackWaite Mine Patented
- IPNF_Mgmt_Action_Plans
- Mtn Peaks
- Structures
- AerialObstacle_Line
- Motorized Trails
- Main Forest Roads
- IPNF RoadSystem



Grizzly Complex
Eagle Grp
8/28/2015
South BobTail, Jack Waite & White Rock Fires

