



# Grizzly Complex

IDIPF-000927



# Planning Map



8/28/2015; Day Shift  
approx. 15090 acres



Ownership	Transportation	Uncontrolled Fire Edge
USFS	Main FS Roads	XXXXXX Completed Dozer Line
BLM	Road	H- H-H Hand Line
STATE	Trans. Road	R- R-R Road as Completed Line
STATEFG	Mountains	Camp
HANCOCK	Structures	Fire Location
PRIVATE	Area_Closures	Helispot
	Field Groups	Repeater
	Mgmt Action Plan	Spot Fire
	Air Hazard - linear	Water Source
	Air Hazard - point	Mining Repos.

Hydrology

- River / Stream
- Lake / Pond / Reservoir
- Swamp / Marsh
- Stream / River

Management Action Point

MAP 10 Fire becomes established from west ridge of Barrymore Creek to Eighty Day Saddle approximately 2 miles north of BPA transmission line.

MAP 11 Fire moves to within approximately 1 mile of private land in Tepee Creek and / or private land and other improvements around Magee Ranger Station.

MAP 12 Fire becomes established within approximately 2 miles of the MacPherson's ranch private property.

MAP 13 Fire spreads to the south and east past Brown Creek, Uranus Peak and Kit Price Campground.

MAP 14 Fire becomes established west of the 978 road and / or near the bottom of Lost Creek drainage.

MAP 15 The fire becomes established south Bobtail and Little Baldy Peaks.

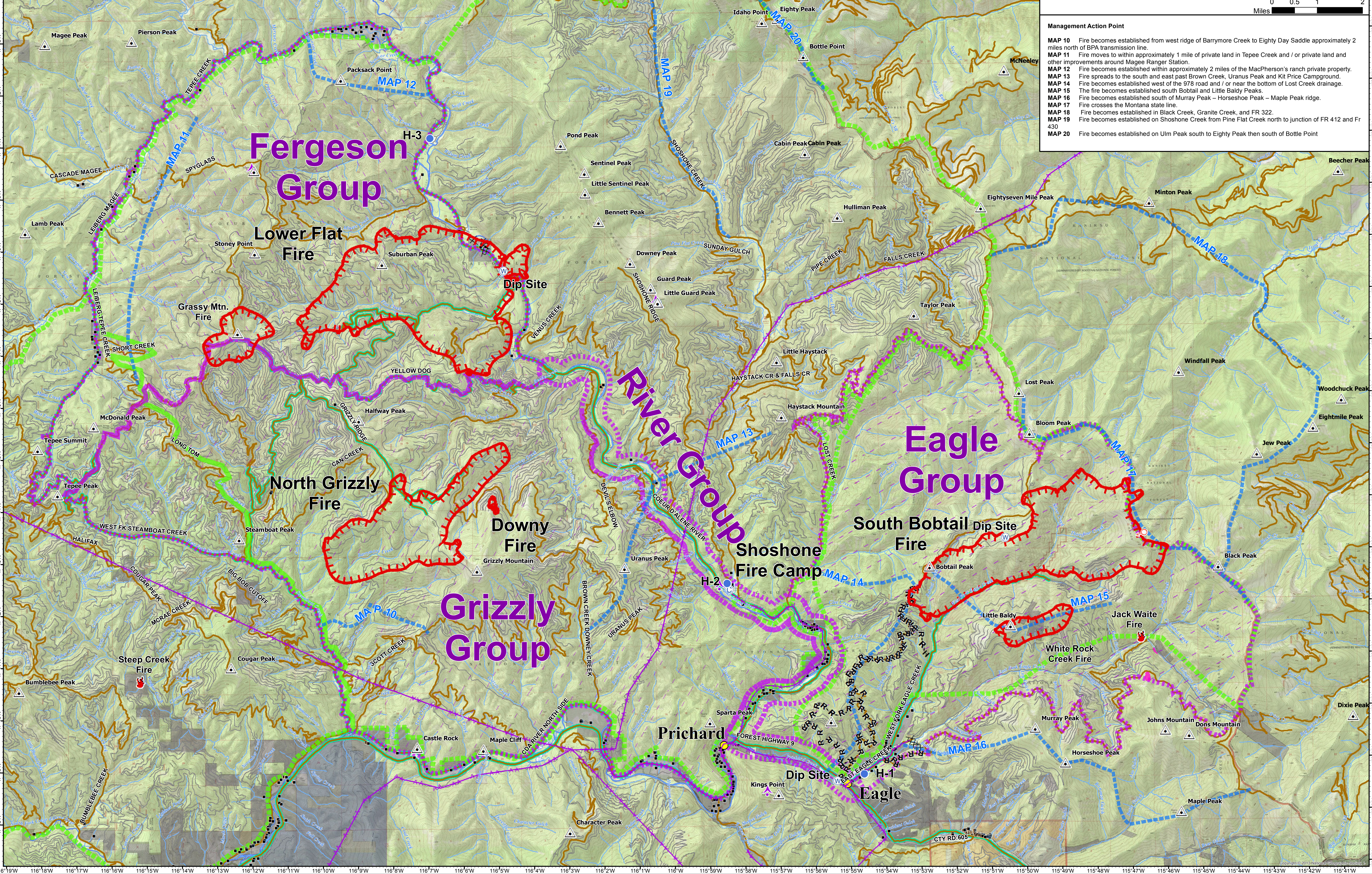
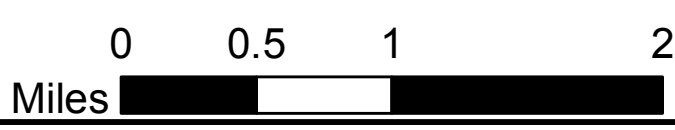
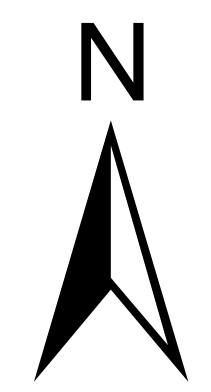
MAP 16 Fire becomes established south of Murray Peak - Horseshoe Peak - Maple Peak ridge.

MAP 17 Fire crosses the Montana state line.

MAP 18 Fire becomes established in Black Creek, Granite Creek, and FR 322.

MAP 19 Fire becomes established on Shoshone Creek from Pine Flat Creek north to junction of FR 412 and FR 430.

MAP 20 Fire becomes established on Ulm Peak south to Eighty Peak then south of Bottle Point



## Ferguson Group

## River Group

## Eagle Group

## Grizzly Group

### Lower Flat Fire

### Grassy Mtn. Fire

### North Grizzly Fire

### Downy Fire

### Shoshone Fire Camp

### South Bobtail Fire

### Jack Waite Fire

### White Rock Creek Fire

### Prichard

### Eagle