



# Grizzly Complex

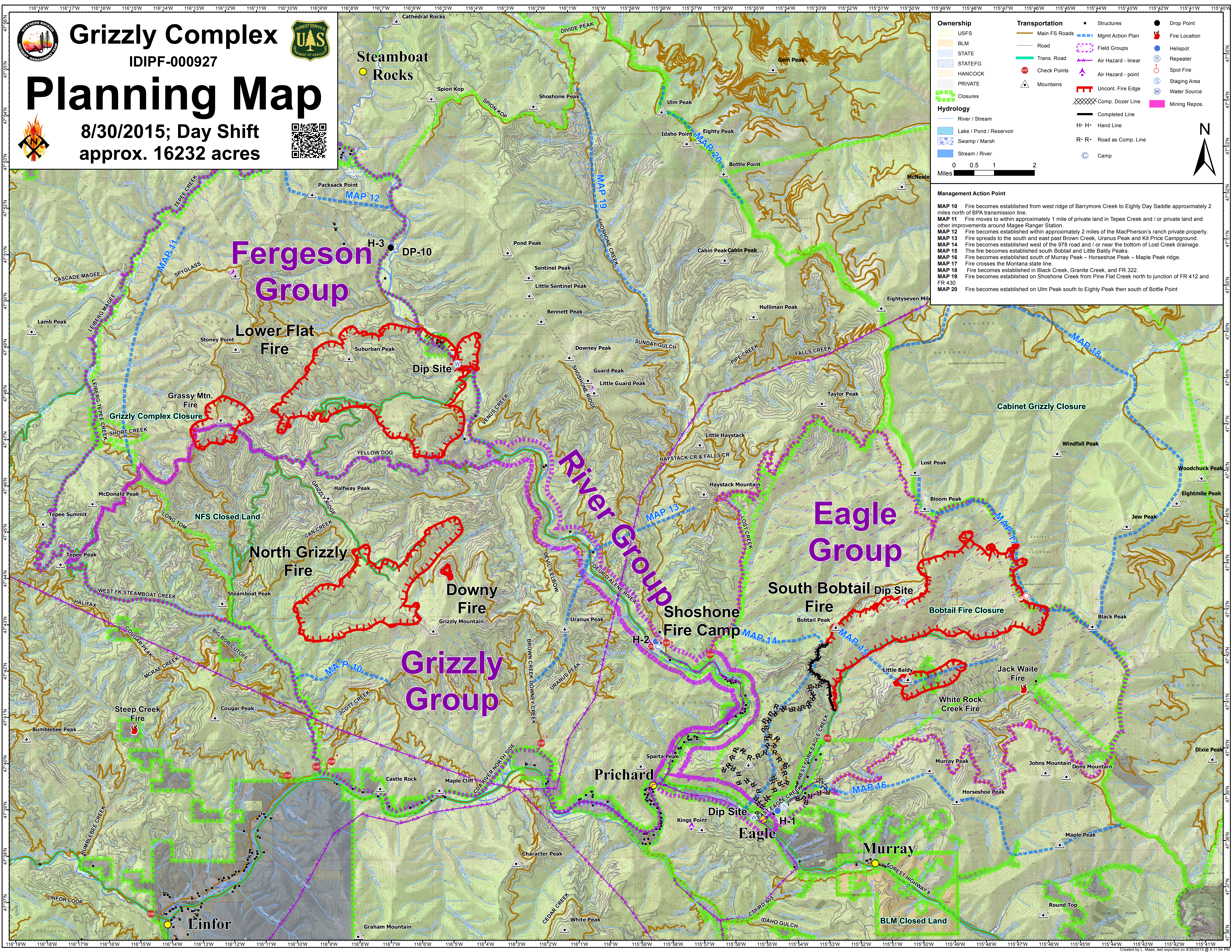
IDIPF-000927



# Planning Map



8/30/2015; Day Shift  
approx. 16232 acres



Ownership	Transportation	Structures	Drop Point
USFS	Main FS Roads	■	●
BLM	Road	○	●
STATE	Trans. Road	○	●
STATEFG	Check Points	○	●
HANCOCK	Mountains	○	●
PRIVATE		○	●
Closures		○	●
River / Stream		○	●
Lake / Pond / Reservoir		○	●
Swamp / Marsh		○	●
Stream / River		○	●

Management Action Point	
MAP 10	Fire becomes established from west ridge of Barrymore Creek to Eighty Day Saddle approximately 2 miles north of BPA transmission line.
MAP 11	Fire moves to within approximately 1 mile of private land in Teepee Creek and / or private land and other improvements around Magee Ranger Station.
MAP 12	Fire becomes established within approximately 2 miles of the MacPherson's ranch private property.
MAP 13	Fire spreads to the south and east past Brown Creek, Uranus Peak and Kit Price Campground.
MAP 14	Fire becomes established west of the 978 road and / or near the bottom of Lost Creek drainage.
MAP 15	The fire becomes established south Bobtail and Little Baldy Peaks.
MAP 16	Fire becomes established south of Murray Peak - Horseshoe Peak - Maple Peak ridge.
MAP 17	Fire crosses the Montana state line.
MAP 18	Fire becomes established in Black Creek, Granite Creek, and FR 322.
MAP 19	Fire becomes established on Shoshone Creek from Pine Flat Creek north to junction of FR 412 and FR 430.
MAP 20	Fire becomes established on Ulm Peak south to Eighty Peak then south of Bottle Point.

