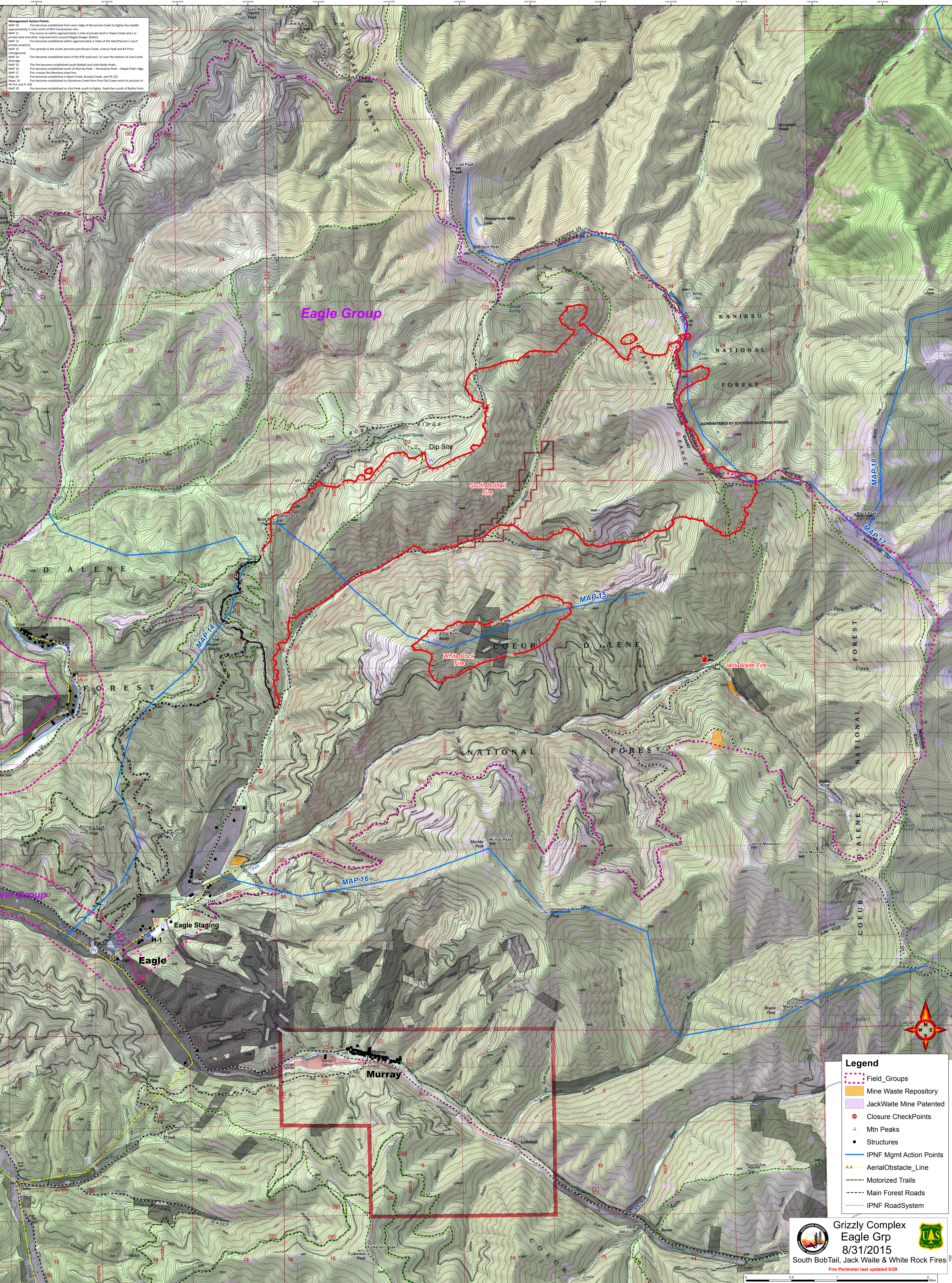


Management Action Points:

- MAP 10 Fire becomes established from west ridge of Barrymore Creek to Eighty Day Saddle approximately 2 miles north of SR 430 easement line.
- MAP 11 Fire moves to within approximately 1 mile of private land in Teepee Creek and 2 or 3 miles east and other improvements around Moore Ranger Station.
- MAP 12 Fire becomes established within approximately 2 miles of the MacPherson's ranch (private property).
- MAP 13 Fire spreads to the south and east past Brown Creek, Uranus Peak and Kit Price Campground.
- MAP 14 Fire becomes established west of the 978 road and / or near the bottom of Lost Creek Campground.
- MAP 15 The fire becomes established south Bobtail and Little Baldy Peaks.
- MAP 16 Fire becomes established south of Murray Peak - Horseshoe Peak - Maple Peak ridge.
- MAP 17 Fire crosses the Morrison side line.
- MAP 18 Fire becomes established in Black Creek, Granite Creek, and FR 322.
- MAP 19 Fire becomes established on Blackstone Creek from Fire Flat Creek north to junction of FR 412 and FR 410.
- MAP 20 Fire becomes established on Little Peak south to Eighty Peak then south of Bottle Point.



Eagle Group

Dip Site

South Bobtail Fire

White Rock Fire

Jack Waite Fire

Eagle Staging

Eagle

Murray

Legend

- Field Groups
- Mine Waste Repository
- JackWaite Mine Patented
- Closure CheckPoints
- Mtn Peaks
- Structures
- IPNF Mgmt Action Points
- AerialObstacle_Line
- Motorized Line
- Main Forest Roads
- IPNF RoadSystem

Grizzly Complex
Eagle Grp
8/31/2015
South BobTail, Jack Waite & White Rock Fires
Fire Perimeter last updated 8/29

