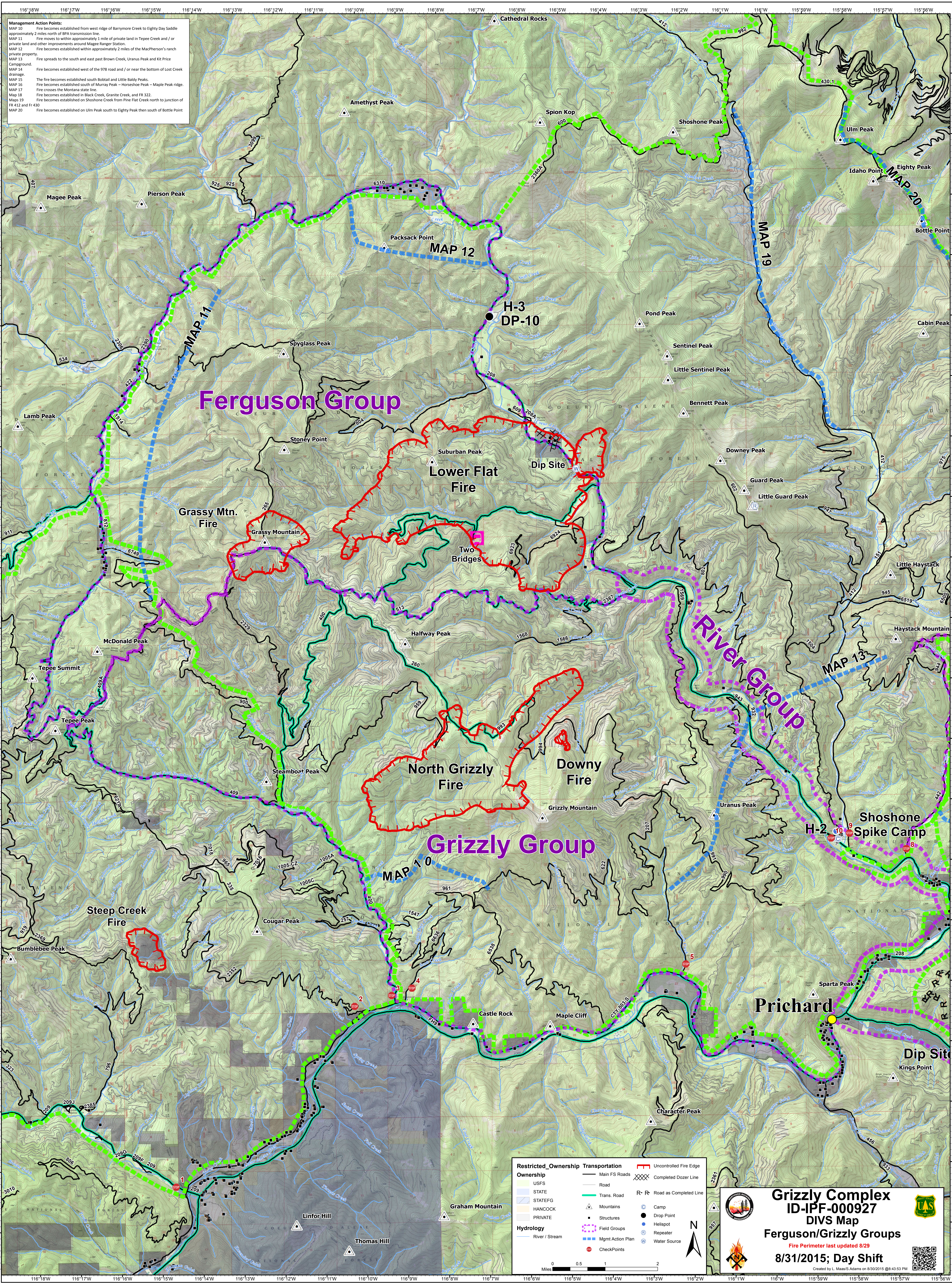



**Management Action Points:**

- MAP 10 Fire becomes established from west ridge of Barrymore Creek to Eighty Day Saddle approximately 2 miles north of BPA transmission line
- MAP 11 Fire moves to within approximately 1 mile of private land in Tepee Creek and / or private land and other improvements around Magee Ranger Station.
- MAP 12 Fire becomes established within approximately 2 miles of the Macpherson's ranch private property.
- MAP 13 Fire spreads to the south and east past Brown Creek, Uranus Peak and Kit Price Campground.
- MAP 14 Fire becomes established west of the 978 road and / or near the bottom of Lost Creek drainage.
- MAP 15 The fire becomes established south Bobtail and Little Baldy Peaks.
- MAP 16 Fire becomes established south of Murray Peak - Horseshoe Peak - Maple Peak ridge.
- MAP 17 Fire crosses the Montana state line.
- MAP 18 Fire becomes established in Black Creek, Granite Creek, and FR 322.
- MAP 19 Fire becomes established on Shoshone Creek from Pine Flat Creek north to junction of FR 412 and FR 426.
- MAP 20 Fire becomes established on Ulm Peak south to Eighty Peak then south of Bottle Point



Restricted_Ownership	Transportation	Uncontrolled Fire Edge
Ownership	Main FS Roads	Completed Dozer Line
USFS	Road	R-R Road as Completed Line
STATE	Trans. Road	Camp
STATEFG	Mountains	Drop Point
HANCOCK	Structures	Helispot
PRIVATE	Field Groups	Repeater
	Mgmt Action Plan	Water Source
	River / Stream	CheckPoints


**Grizzly Complex**  
**ID-IPF-000927**  
**DIVS Map**  
**Ferguson/Grizzly Groups**  
Fire Perimeter last updated 8/29  
**8/31/2015; Day Shift**  
Created by L. Maas Adams on 8/30/2015 @ 8:43:53 PM