



Grizzly Complex

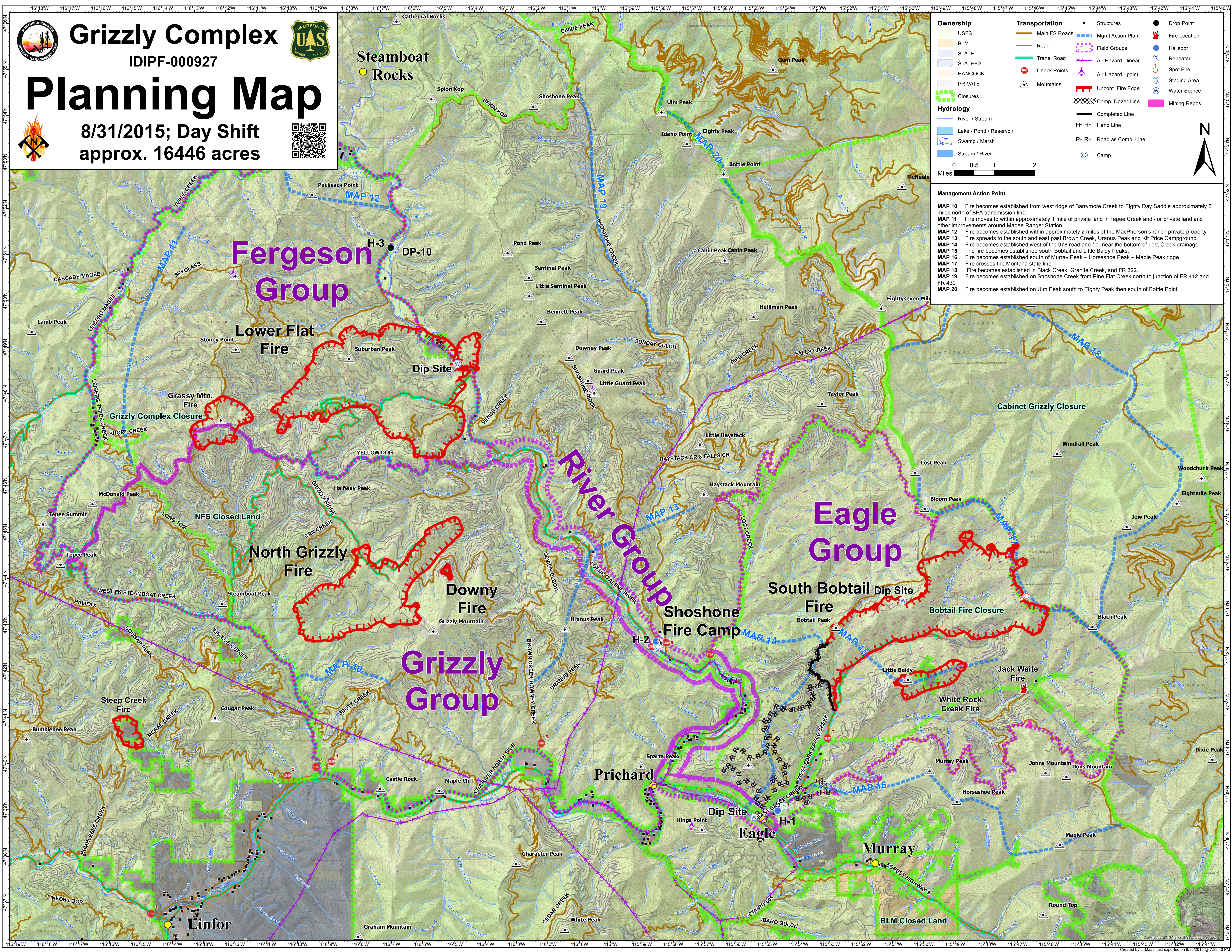
IDIPF-000927



Planning Map



8/31/2015; Day Shift
approx. 16446 acres



Ownership	Transportation	Structures	Drop Point
USFS	Main FS Roads	Field Groups	Fire Location
BLM	Road	Air Hazard - linear	Helispot
STATE	Trans. Road	Air Hazard - point	Repeater
STATEFG	Check Points	Uncont. Fire Edge	Spot Fire
HANCOCK	Mountains	Comp. Dozer Line	Staging Area
PRIVATE		Completed Line	Water Source
Closures		H-H Hand Line	
River / Stream		R-R Road as Comp. Line	
Lake / Pond / Reservoir		Camp	
Swamp / Marsh			
Stream / River			

Miles 0 0.5 1 2

Management Action Point

MAP 10 Fire becomes established from west ridge of Barrymore Creek to Eighty Day Saddle approximately 2 miles north of BPA transmission line.

MAP 11 Fire moves to within approximately 1 mile of private land in Teepee Creek and / or private land and other improvements around Magee Ranger Station.

MAP 12 Fire becomes established within approximately 2 miles of the MacPherson's ranch private property.

MAP 13 Fire spreads to the south and east past Brown Creek, Uranus Peak and Kit Price Campground.

MAP 14 Fire becomes established west of the 978 road and / or near the bottom of Lost Creek drainage.

MAP 15 The fire becomes established south Bobtail and Little Baldy Peaks.

MAP 16 Fire becomes established south of Murray Peak - Horseshoe Peak - Maple Peak ridge.

MAP 17 Fire crosses the Montana state line.

MAP 18 Fire becomes established in Black Creek, Granite Creek, and FR 322.

MAP 19 Fire becomes established on Shoshone Creek from Pine Flat Creek north to junction of FR 412 and FR 430.

MAP 20 Fire becomes established on Ulm Peak south to Eighty Peak then south of Bottle Point.

