



Grizzly Complex

ID-IPF-000927

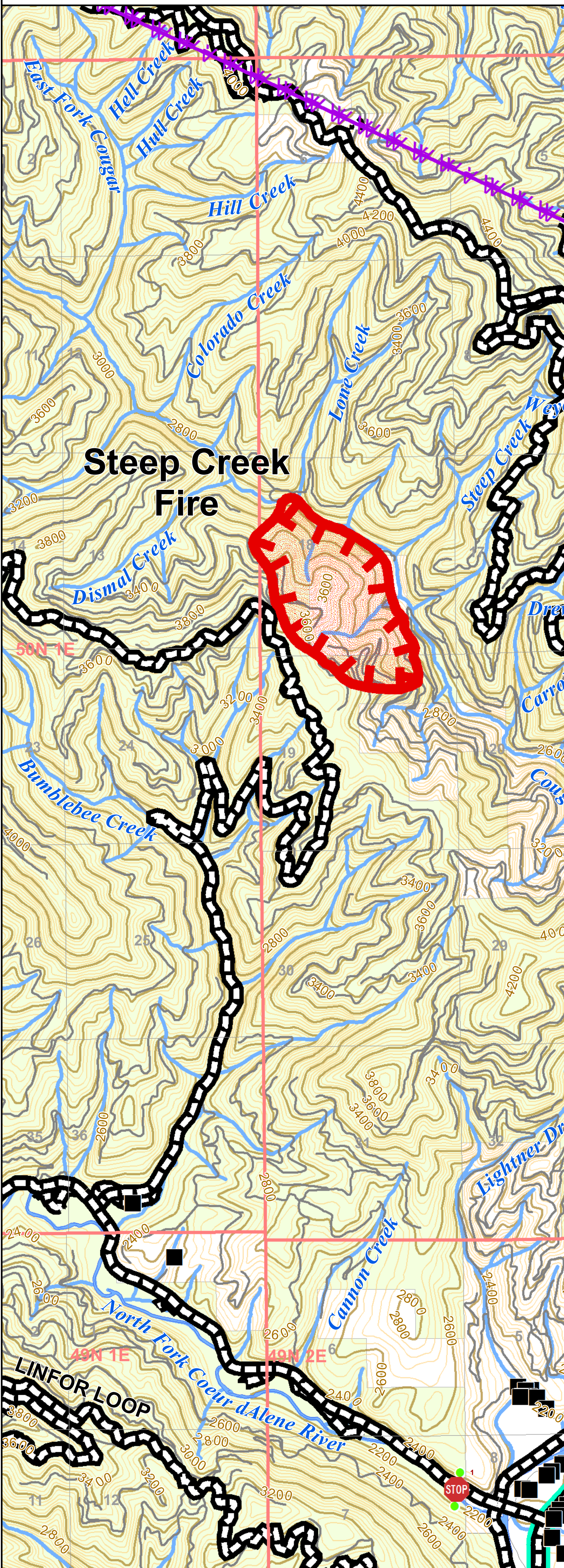
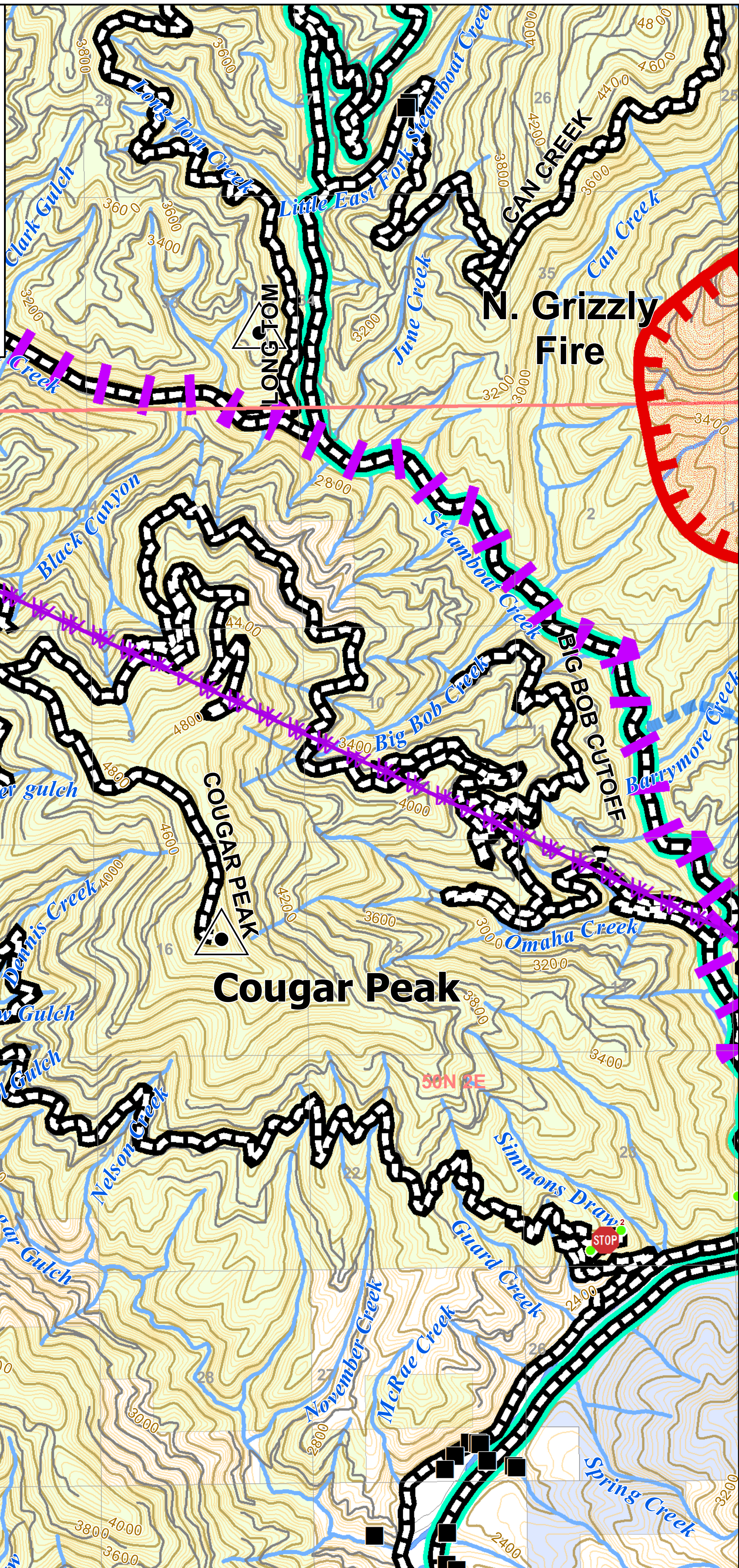


Steep Creek Fire Briefing Map



9/1/2015; Day Shift

approx. 18603 acres



USFS	Existing Barrier
STATE	Trans. Roads
STATEFG	Mgmt Action Plan
HANCOCK	River / Stream
PRIVATE	Waterbody
Structures	Swamp / Marsh
Main FS Roads	Stream / River
Road	FirePolygon
Check Points	Air Hazard - linear
	Uncont. Fire Edge