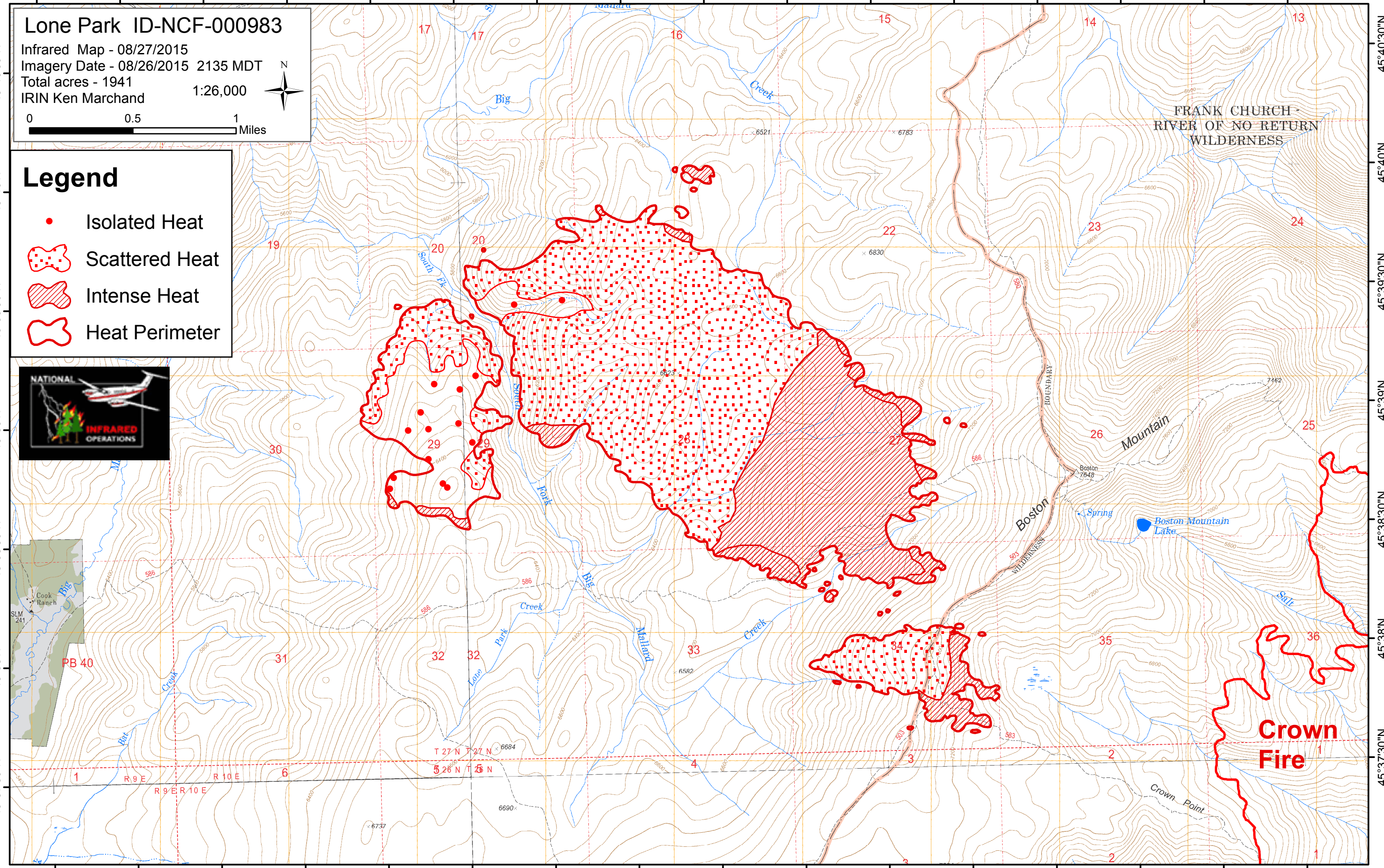


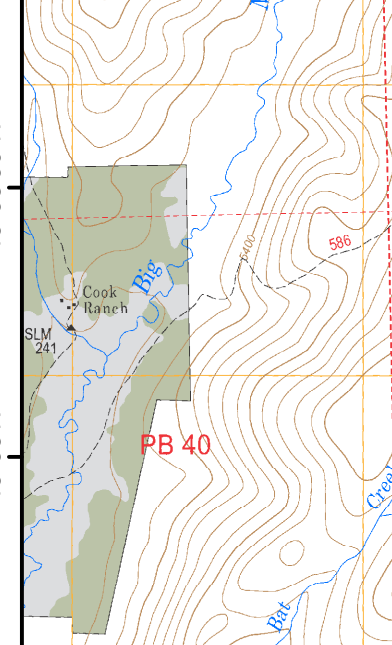
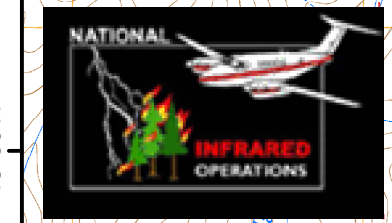
115°17'30"W 115°17'W 115°16'30"W 115°16'W 115°15'30"W 115°15'W 115°14'30"W 115°14'W 115°13'30"W 115°13'W 115°12'30"W 115°12'W 115°11'30"W 115°11'W 115°10'30"W 115°10'W



Lone Park ID-NCF-000983
 Infrared Map - 08/27/2015
 Imagery Date - 08/26/2015 2135 MDT
 Total acres - 1941
 IRIN Ken Marchand 1:26,000

Legend

- Isolated Heat
- ◻ Scattered Heat
- ▨ Intense Heat
- Heat Perimeter



115°17'30"W 115°17'W 115°16'30"W 115°16'W 115°15'30"W 115°15'W 115°14'30"W 115°14'W 115°13'30"W 115°13'W 115°12'30"W 115°12'W 115°11'30"W 115°11'W 115°10'30"W 115°10'W

45°40'30"N
45°40'N
45°39'30"N
45°39'N
45°38'30"N
45°38'N
45°37'30"N

45°40'30"N
45°40'N
45°39'30"N
45°39'N
45°38'30"N
45°38'N
45°37'30"N