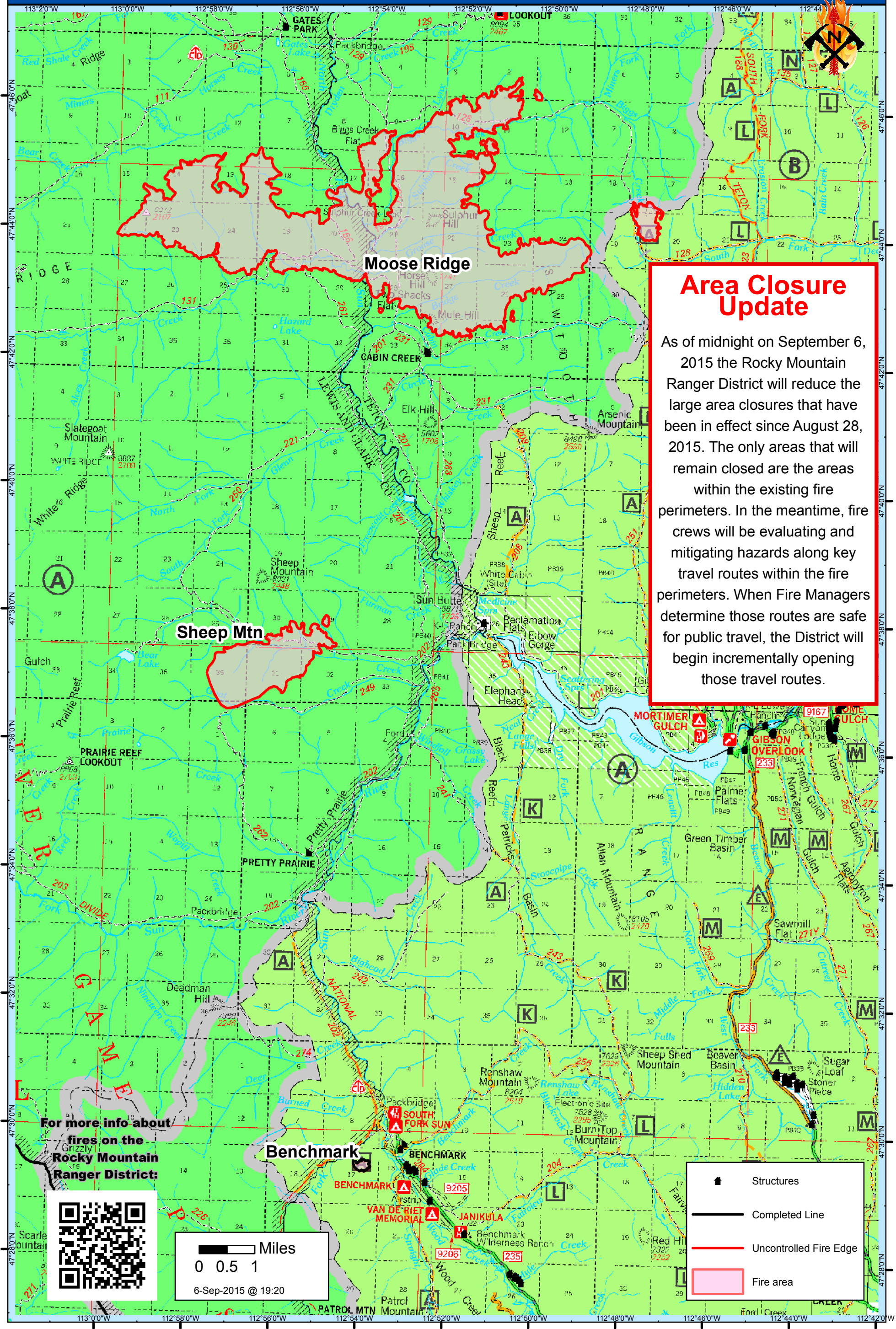


Public Information Map
Moose Ridge, Sheep Mountain,
and Benchmark Fires



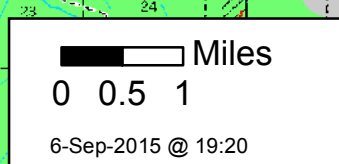
Lewis and Clark National Forest
7-Sept-2015



Area Closure Update

As of midnight on September 6, 2015 the Rocky Mountain Ranger District will reduce the large area closures that have been in effect since August 28, 2015. The only areas that will remain closed are the areas within the existing fire perimeters. In the meantime, fire crews will be evaluating and mitigating hazards along key travel routes within the fire perimeters. When Fire Managers determine those routes are safe for public travel, the District will begin incrementally opening those travel routes.

For more info about fires on the Rocky Mountain Ranger District:



- Structures
- Completed Line
- Uncontrolled Fire Edge
- Fire area