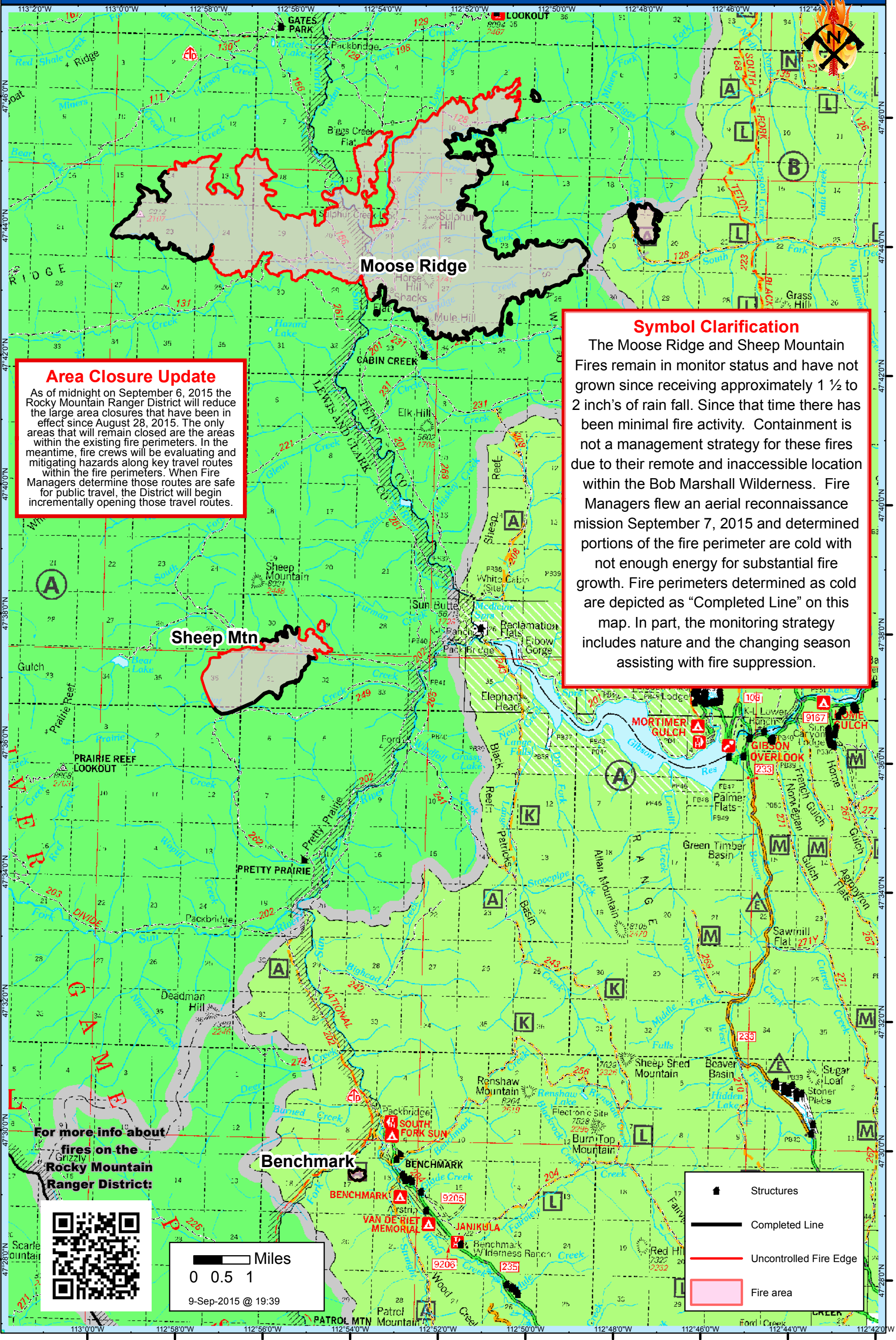


**Public Information Map**  
**Moose Ridge, Sheep Mountain,**  
**and Benchmark Fires**



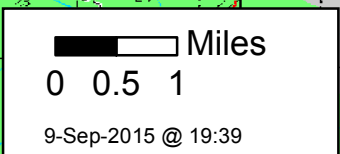
**Lewis and Clark National Forest**  
**10-Sept-2015**



**Area Closure Update**  
 As of midnight on September 6, 2015 the Rocky Mountain Ranger District will reduce the large area closures that have been in effect since August 28, 2015. The only areas that will remain closed are the areas within the existing fire perimeters. In the meantime, fire crews will be evaluating and mitigating hazards along key travel routes within the fire perimeters. When Fire Managers determine those routes are safe for public travel, the District will begin incrementally opening those travel routes.

**Symbol Clarification**  
 The Moose Ridge and Sheep Mountain Fires remain in monitor status and have not grown since receiving approximately 1 ½ to 2 inch's of rain fall. Since that time there has been minimal fire activity. Containment is not a management strategy for these fires due to their remote and inaccessible location within the Bob Marshall Wilderness. Fire Managers flew an aerial reconnaissance mission September 7, 2015 and determined portions of the fire perimeter are cold with not enough energy for substantial fire growth. Fire perimeters determined as cold are depicted as "Completed Line" on this map. In part, the monitoring strategy includes nature and the changing season assisting with fire suppression.

For more info about  
 fires on the  
 Rocky Mountain  
 Ranger District:



	Structures
	Completed Line
	Uncontrolled Fire Edge
	Fire area