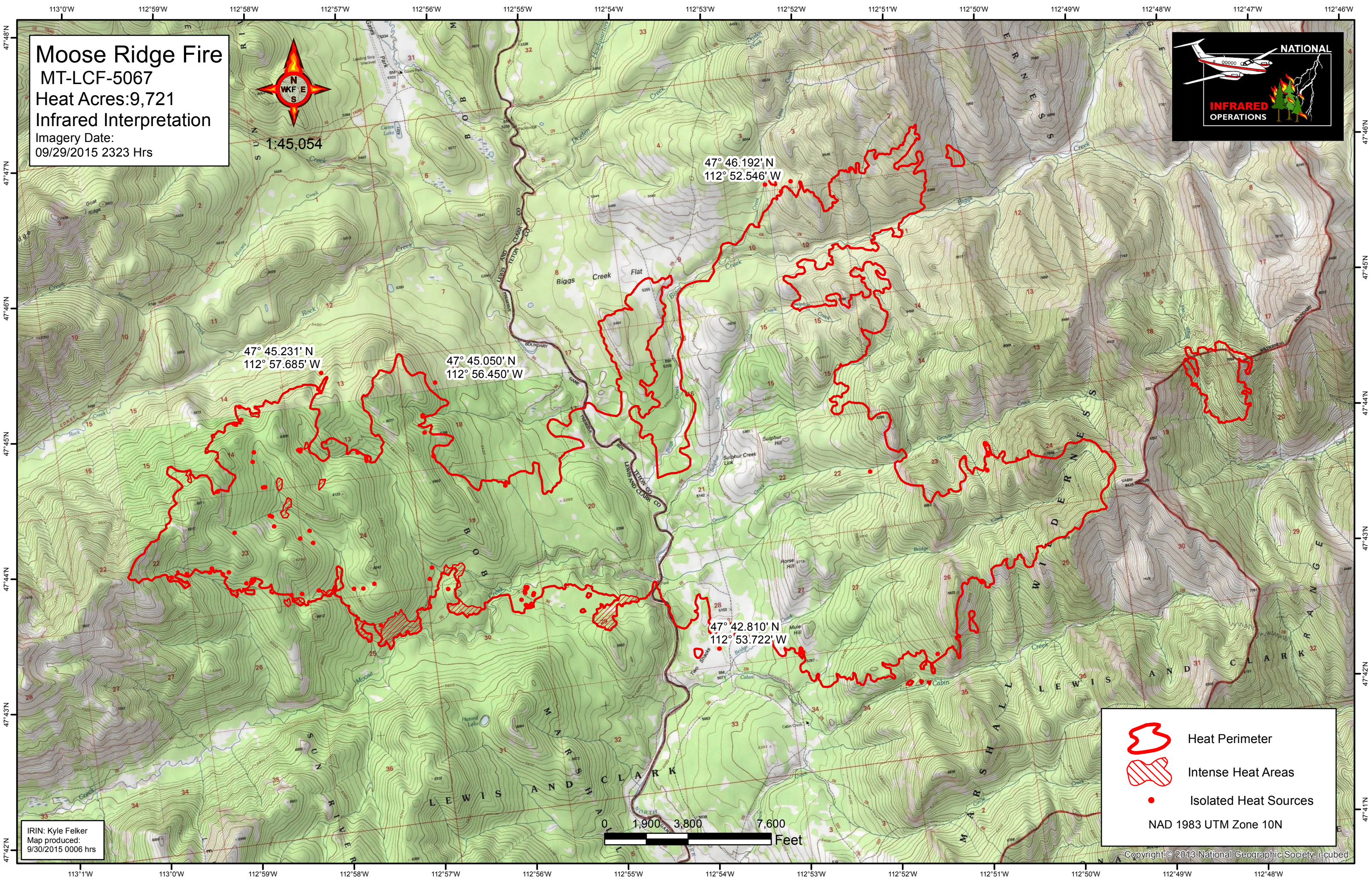


Moose Ridge Fire
 MT-LCF-5067
 Heat Acres: 9,721
 Infrared Interpretation
 Imagery Date:
 09/29/2015 2323 Hrs






47° 46.192' N
 112° 52.546' W

47° 45.231' N
 112° 57.685' W

47° 45.050' N
 112° 56.450' W

47° 42.810' N
 112° 53.722' W



-  Heat Perimeter
-  Intense Heat Areas
-  Isolated Heat Sources

NAD 1983 UTM Zone 10N

IRIN: Kyle Felker
 Map produced:
 9/30/2015 0006 hrs