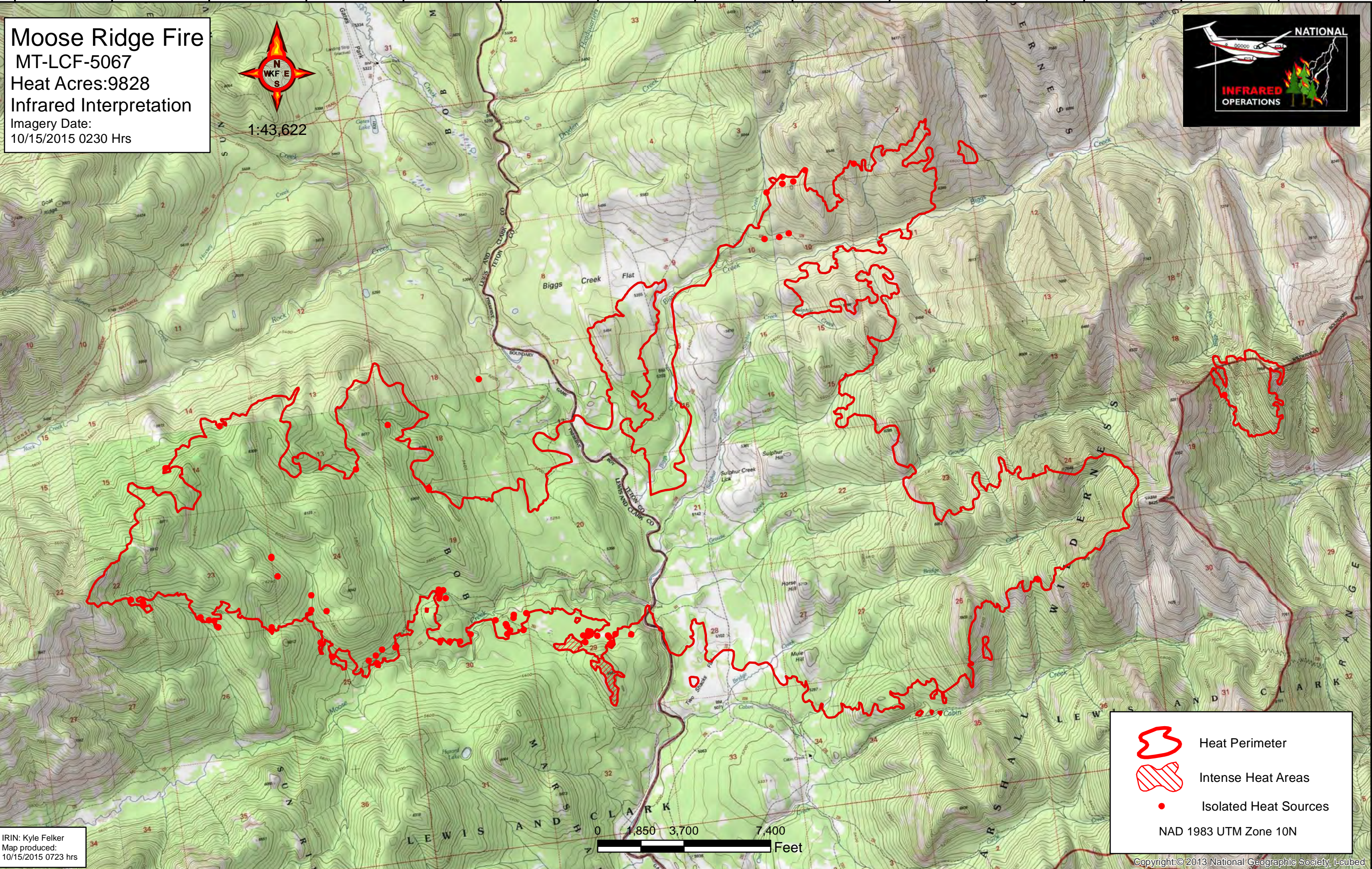





113°0'W 112°59'W 112°58'W 112°57'W 112°56'W 112°55'W 112°54'W 112°53'W 112°52'W 112°51'W 112°50'W 112°49'W 112°48'W 112°47'W

Moose Ridge Fire
MT-LCF-5067
Heat Acres:9828
Infrared Interpretation
Imagery Date:
10/15/2015 0230 Hrs



1:43,622



-  Heat Perimeter
 -  Intense Heat Areas
 -  Isolated Heat Sources
- NAD 1983 UTM Zone 10N

IRIN: Kyle Felker
Map produced:
10/15/2015 0723 hrs

1,850 3,700 7,400
Feet

Copyright © 2013 National Geographic Society, i-cubed

113°1'W 113°0'W 112°59'W 112°58'W 112°57'W 112°56'W 112°55'W 112°54'W 112°53'W 112°52'W 112°51'W 112°50'W 112°49'W 112°48'W