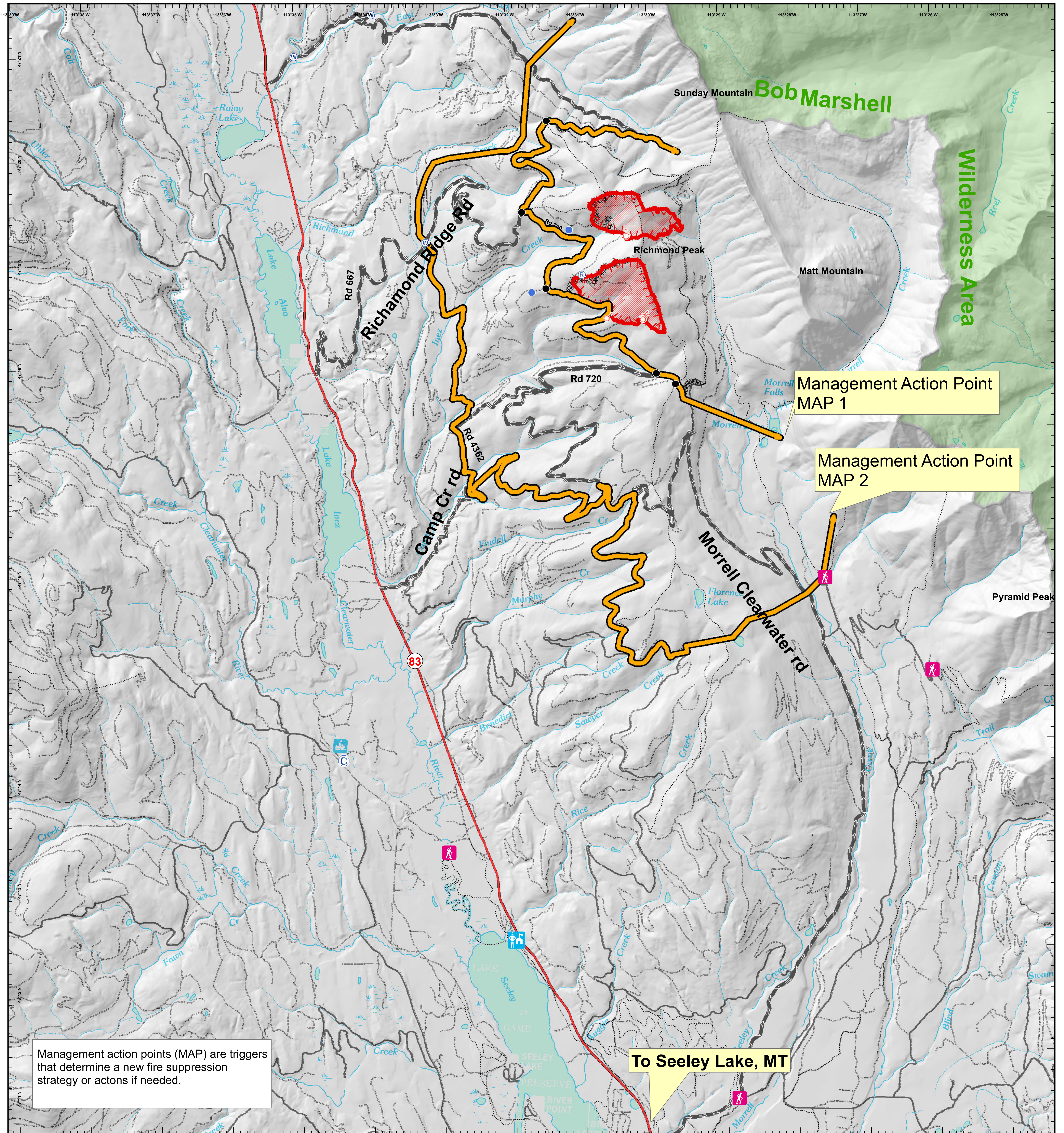


# Morrell Complex Fire



Management action points (MAP) are triggers that determine a new fire suppression strategy or actions if needed.

## Public Meeting Map

MT-LNF-000851  
 August 20, 2015  
 475+ acres  
 NAD 1983  
 Degrees, Decimal Minutes

0 0.75 1.5 3 Miles

### Legend

- |                 |              |                         |               |
|-----------------|--------------|-------------------------|---------------|
| Trailhead       | Helispot     | Completed Dozer Line    | <b>Roads</b>  |
| Ranger_Station  | ICP          | Management Action Point | downhill only |
| WildernessAreas | Repeater     | Uncontrolled Fire Edge  | two way       |
| Camp            | Spot Fire    | uphill only             | Trails        |
| Drop Point      | Water Source |                         |               |



13.45° E

S.Linn  
 8/20/2015  
 1100 Hours