

Clearwater Complex

Incident Action Plan

August 17, 2015

Monday

Day Operational Period 0600 – 2000

LAWYER 2 BRANCH: ID-MCS-000646, PNJ1AK (1502)

LOLO CREEK BRANCH: ID-NCF-000720, P1J1JF (0117)

FISHER BRANCH: ID-CMS-000762, PNJ1EL (1502)

SYRINGA BRANCH: ID-NCF-000720, P1J1JF (0117)

PILOT KNOB BRANCH: ID-NCF-000720, P1J1JF (0117)

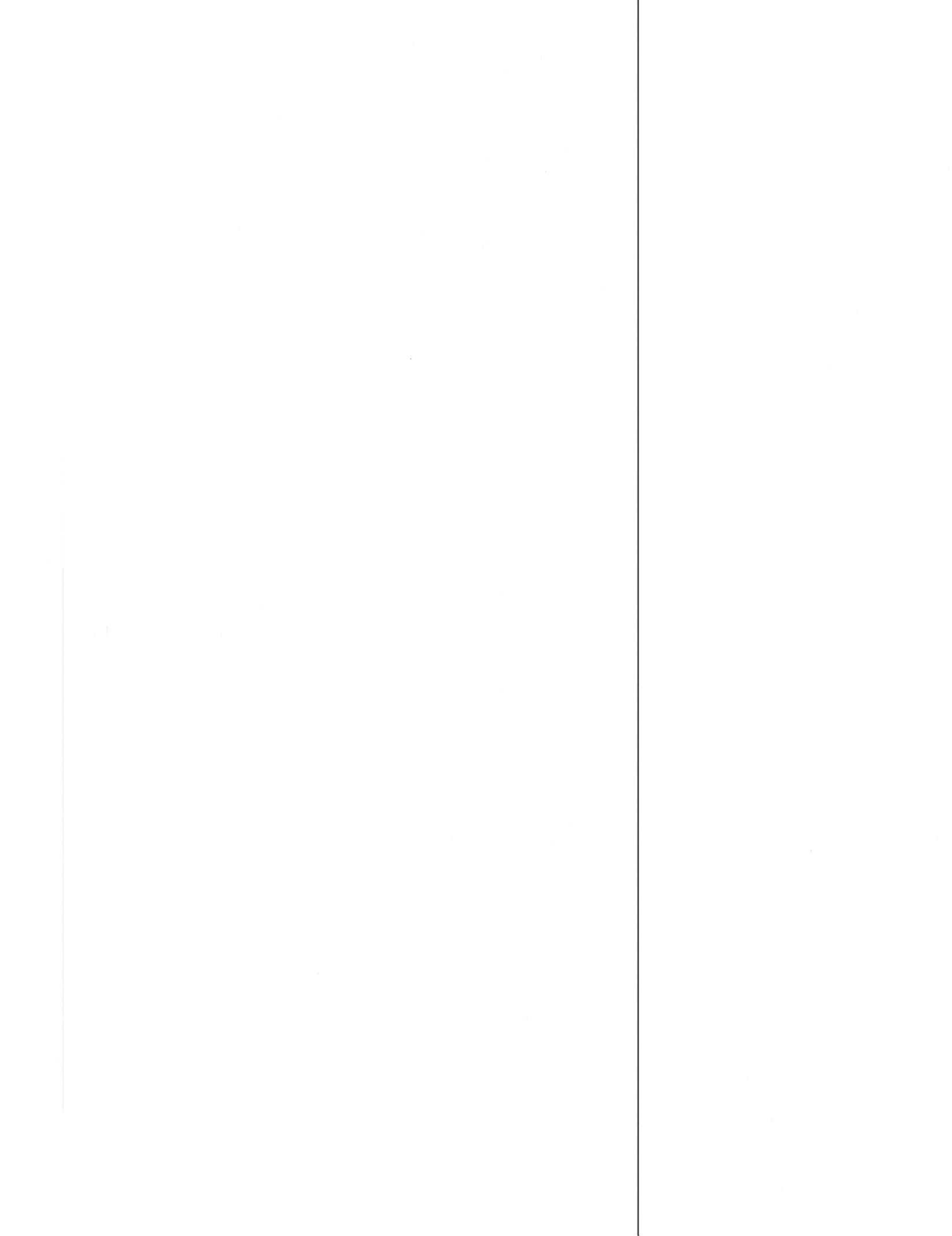
Provide an Effective Briefing

Providing an effective briefing is extremely important, especially when information needs to be conveyed in an accurate and timely fashion. Effective briefings also provide a sense of purpose, confidence, and inspiration to your audience. It supports organizational leadership and maximizes team performance.

Objectives of a Briefing

- To support standard operating procedures (SOPs);
- To define and communicate work objectives and special instructions;
- To communicate personal expectations; and
- To promote inquiry, advocacy, and feedback.





INCIDENT OBJECTIVES	1. Incident Name Clearwater Complex	2. Date 08/16/2015	3. Time 2000
4. Operational Period: 08/17/2015 0600-2000			
<p>5. General Control Objectives for the Incident (include alternatives)</p> <p>Leaders Intent</p> <ol style="list-style-type: none"> 1. Reduce and /or eliminate impacts caused by the Clearwater Complex to residents, businesses, and critical infrastructure ensuring public, firefighter, and aviation safety. Ensure that all incident actions reflect this commitment to safety through sound risk assessment, adherence to the 10 standard firefighting orders, mitigation of the 18 situations that shout watch out and LCES. If you cannot mitigate a tactical hazard to an acceptable level of risk, do not implement the corresponding tactical action. Do not let cost objectives minimize safety and risk management. Ensure that Leader's Intent is clearly communicated and understood. 2. Coordinate incident management activities with Idaho Department of Lands, US Forest Service, Nez Perce Tribe, Bureau of Indian Affairs, and County/Municipal entities including but not limited to; suppression actions, support needs, and rehabilitation. Tactics will be most aggressive where values at risk are high. Take advantage of natural features such as breaks in fuels, topographic features, or changes in weather. 3. Treat all Incident Management personnel, cooperators, contractors and local publics with dignity and respect. Ensure prompt and accurate communication that fosters discussions, embraces local knowledge, and encourages interactions with the hosting agencies, local cooperators, and private landowners. 4. Coordinate closely with resource advisors to ensure that suppression impacts to natural and cultural resources are kept to a minimum. <p>Operational Objectives</p> <ol style="list-style-type: none"> 1. Check the fires' growth and provide for point protection where structures are threatened. 2. Branch priorities are Lolo 2, Carrot Ridge, Lawyer 2, Fisher, and Syringa. Assess community protection opportunities in Kamiah, Weippe, Syringa, and Lolo Creek; strive to reduce impacts to private and commercial structures in these communities and private or governmental structures in outlying areas. 3. Reduce the probability of fire disrupting or making undue impacts to infrastructure such as roadways (especially Highways 12, 64, 11, 162 and 14 as well as 100 Road and Red River Road), power lines (prioritize transmission over distribution), and communication sites. 4. Develop contingency plans that identify locations and specific actions to be taken in the event that the fire threatens to or moves significantly. <p>Management Objectives</p> <ol style="list-style-type: none"> 1. Provide assistance for initial attack as requested coordinating all IA activities with Grangeville Dispatch. 2. Protect waterways and riparian areas from incident management impacts. Document the placement and quantity of long term retardant. Operations personnel should coordinate with appropriate READ(s) to document; and, if necessary, coordinate mitigation measures related to anadromous fisheries, watershed impacts, other sensitive species and cultural sites. 			
6. Weather Forecast for Period - See Attached Weather Forecast			
7. General Safety Message - See Attached Safety Message			
8. Attachments (mark if attached)			
<input checked="" type="checkbox"/> Organization List - ICS 203	<input checked="" type="checkbox"/> Weather Forecast	<input checked="" type="checkbox"/> Safety Message	
<input checked="" type="checkbox"/> Div. Assignment Lists - ICS 204	<input checked="" type="checkbox"/> Fire Behavior Forecast	<input checked="" type="checkbox"/> Medical Emergency Com Plan	
<input checked="" type="checkbox"/> Communications Plan - ICS 205	<input checked="" type="checkbox"/> Incident Map		
<input checked="" type="checkbox"/> Medical Plan - ICS 206	<input checked="" type="checkbox"/> Air Operations- ICS 220		
9. Prepared by (Planning Section Chief) Paul Fieldhouse (T)		9. Approved by (Incident Commander) Greg Poncin	

ORGANIZATION ASSIGNMENT LIST

1. Incident Name

Clearwater Complex

2. Date
August 16, 2015

3. Time
2100

4. Operational Period
August 17, 2015 0600-2000

Position	Name
----------	------

5. Incident Commander and Staff

Incident Commander	Greg Poncin
Safety Officer	Gerald Vickers, Bob Habeck
Information Officer	Leona Rodreick, Penny Bertram (T)
Liaison Officer	Rob Taylor, Chris Grove (T)

6. Agency

Agency	Name
--------	------

IDL Area Manager	Zo Anderson
USFS	Cheryl Probert/Chip Weber
Nez Perce Tribe	John DeGroot
BLM	Robbin Boyce
Resource Advisor	Crystal Danner Karen Smith
Resource Advisor	Larry Geffre Jim Lutes (T)

7. Planning Section

Chief	Mike Kopitzke, Paul Fieldhouse (T)
Resources Unit	Clint Kolarich
Situation Unit	Rick Moore
Demobilization Unit	Laurie Oliver
GISS	Mark Slaten, Erin Nock, Jason Singleton
Training	
Fire Behavior	Rick Reitz
Computer Specialist	Amy Johnson, Tammy Lindberg
IMET	
Human Resource Specialist	Dale Tribby, Jim Homison (T)
Status Check-In	Laurie Oliver

8. Logistics Section

Chief	Roylene Gaul, Jim Evanoff
Supply Unit	John Kastner
Facilities Unit	Charles Showers
Ground Support Unit	Darrel Steinberg
Communications Unit	Dustin Sene
Medical Unit	Roy Grant
Security Manager	Bill Dowdy
Food Unit	Brett Malingo

9. Operations Section

Planning Operations	Brent Olson, Walt Tomascak
Line Operations	Bob Lippincott
Branch: Lolo 2 Steve Creech	
Division/Group	Alpha Tim Laroche
Division/Group	Echo Ryan Butler/Martin (T)
Division/Group	Foxtrot Travis Pfister
Division/Group	Romeo Marvin Matheson
Division/Group	Tango Drew Daily

Branch: Carrot Ridge Darryl Willis/Holguin

Division/Group	X-Ray John Shotzberger
Division/Group	
Division/Group	

Branch: Lawyer 2

Task Force Leader	Golf/Juliet David Wanderaas
Division/Group	Greer Josh Quinn
Division/Group	
Division/Group	

Structure Protection Group

Division/Group	Scott Waldron
Division/Group	
Division/Group	
Division/Group	
Division/Group	

e. Air Operations Branch

Air Operations Branch Director	Dennis Morton
Air Attack Supervisor	
Air Support Supervisor	Brian Campbell
Helicopter Coordinator	
Air Tanker Coordinator	

10. Finance Section

Chief	Shirley Ehmann
Time	Charlotte Benson
Procurement	Wendy Stephenson
PTRC	Dawn Ullrey
Compensation/Claims Unit	Shirley Marsh
Cost Unit	Kevin Sweeney

Prepared by (Resource Unit Leader)
Paul Fieldhouse

Safety Message

Managing Change

Change occurs at every moment of every day. Transitions between work shifts, personnel, line assignments, fuels, weather, topography, and other variables are prime opportunities for accidents to occur. Recognizing change and managing it appropriately is every fire fighters responsibility.

Three Techniques for Managing Change:

- **Anticipate** - Look for it. Maintain your situational awareness throughout your shift and anticipate change at all times.
- **Ask Questions** - Understand it. Get more information and ask questions. Remember to include all personnel, including subordinates, when information gathering.
- **Take Action** - Address it. Take the time to mitigate all hazards and make them known. Stay flexible to adjust your tactics as necessary.

Communication is the best tool to begin understanding and addressing change appropriately. Include all personnel and means necessary to fully identify and communicate change.

Change is Here Now – Be Mindful and Act Appropriately

Clearwater Complex

Operational Period 8-17-15



INCIDENT Weather Forecast



FORECAST NO: 4

NAME OF INCIDENT: Clearwater Complex

PREDICTION FOR: DAY & NIGHT SHIFT

UNIT: IDL – Maggie Creek

SHIFT DATE: Monday, August 17, 2015

SIGNED:

TIME AND DATE

Makoto Moore
Incident Meteorologist

FORECAST ISSUED: 2000 Sunday, August 16, 2015

WEATHER DISCUSSION:

Dry conditions are expected to continue today under northwest flow aloft. Look for a gradual warming trend today and into mid-week...with maximum temperatures this afternoon climbing into the mid 80s to near 90 degrees.

WEATHER FORECAST: MONDAY

WEATHER: Mostly sunny. Smoke-filled valleys.

MAX TEMPERATURE: 84-90 F

MIN RELATIVE HUMIDITY: 15-20%

CWR: 0%

20 FT WINDS: Downslope/down valley 3-6 mph ... then upslope/up valley 4-7 mph by 1000. Northwest 5-10 mph over higher west-facing slopes and ridges.

HAINES INDEX: 3...Very low

LAL: 1.

STABILITY/INVERSION: Inversion this morning at 500 ft AGL. Ridges will clear after 0900 but valleys will remain smoke-filled.

WEATHER FORECAST: MONDAY NIGHT

WEATHER: Mostly clear. Smoke-filled valleys.

MIN TEMPERATURE: 51-56 F

MAX RELATIVE HUMIDITY: 65-70%

CWR: 0%

20 FT WINDS: Downslope/downvalley 3-6 mph. Higher exposed ridges will remain northwest at 5 mph.

HAINES INDEX: 2...Very low

LAL: 1.

EXTENDED FORECAST: TUESDAY - THURSDAY

Tuesday: Mostly sunny. Max Temp/Min RH: 84-92 F/14-20% . Min Temp/Max RH: 52-60 F/60-70%. Northwest winds 8-12 mph.

Wednesday and Thursday: Mostly sunny. Max Temp/Min RH: 87-95 F/12-18% . Min Temp/Max RH: 54-61 F/50-60%. West winds 6-12 mph

Sunrise: 546 am Sunset: 750 pm

FIRE BEHAVIOR FORECAST

Forecast#: 4	Type of Fire: Wildfire
Incident Name: Clearwater Complex	Operation Period: 08/17/2015 Day & Night
Date Issued: 08/16/2015	Time Issue: 1800
Unit: IDL – Maggie Creek Supervisory Area	Signed: Wilkinson, Reitz (FBANs)
WEATHER	
SUMMARY: See Fire Weather Forecast #4.	
FIRE BEHAVIOR	
<p>GENERAL: Extremely dry fuels (i.e., surface and aerial), steep topography, and wind support a rapidly spreading fire. Torching and spotting should be anticipated.</p> <p>Day Operational Period: Under critical conditions (see predicted weather forecast) surface fire may exhibit the following behaviors: rate of spread (ROS): 19 ch/hr (timber) or 297 ch/hr (grass), flame length (FL): 8 feet (timber) or 22 feet (grass), probability of ignition (PI): 90%, spotting distance: 0.2 miles (timber) or 0.5 miles (grass), timber torching and crowning possible.</p> <p>Night Operational Period: Under critical conditions (see predicted weather forecast) surface fire may exhibit the following behaviors: rate of spread (ROS): 13 ch/hr (timber) or 132 ch/hr (grass), flame length (FL): 6 feet (timber) or 13 feet (grass), probability of ignition (PI): 30%, spotting distance: 0.1 miles (timber) or 0.2 miles (grass).</p>	
<p>SPECIFIC: Lawyer 2 Branch: Minimal fire activity is expected in divisions Gulf, Juliet, and Greer Fire. Spot fires may continue to show up. Northwesterly wind will mean southeastern fire perimeters will be tested throughout day.</p> <p>Fisher Branch: Continued slow spread up Six-Mile Drainage and Big Canyon Creek. Moderate westerly winds will limit fire's ability to cross containment lines onto crop lands today.</p> <p>Lolo Branch: Agriculture practices and pads with structures adjacent to wildland grass and conifer stringers complicate fuel characteristics. Some characteristics check rate of spread and intensity (i.e., disking straw into soil, bailed and removed straw, composition shingles, etc.) while other characteristics intensify problem (i.e., baled straw left in field, flammable material next to structures, etc.). New fires and/or spots may continue to show up.</p> <p>Carrot Branch: Immature-to-mature mixed conifer overstory with grass and shrub understory. Steep canyon walls. Canyon aligned with northwest winds. Fire has established itself in southern end of Carrot Creek. Large areas are unburned. Fire has blackened west rim of canyon. Unburned agricultural sites south of canyon. Fire will continue to burn from bottom to top of canyon and spot across canyon.</p> <p>Pilot Knob and Syringa Branches: presently unstaffed.</p>	
<p>AIR OPERATIONS: Smoke trapped under morning inversion and smoke columns after inversion lifts may prevent opportunities for use of aerial resources.</p>	
<p>SAFETY: Wildland urban interface fuels present challenges. Urban and agricultural fuels may explode, dispense odorless poisonous gases, burn intensely, not respond to cooling or smothering as a suppression action, send embers or projectiles outside control lines, etc. Some fuels may be housed within structures out of sight. Approach this situation with extreme caution.</p>	

DIVISION ASSIGNMENT LIST				1. Branch Lolo 2		2. Division/Group Alpha	
3. Incident Name Clearwater Complex				4. Operational Period: Day Date: August 17, 2015 Time: 0600-2000			
5. Operations Personnel							
Planning Ops		Brent Olson		Division Supervisor		Tim Laroche	
Line Ops		Bob Lippincott		Air Operations Branch Director		Dennis Morton	
6. Resources Assigned this Period							
Strike Team/Task Force/ Resource Designator	RO #	Leader	Number Persons	Trans. Needed	Last Shift	Drop Off PT./Time	Pick Up PT./Time
IHC Pike	C-3	John Allbright	21	NO		ICP 0600	ICP 2000
HC2 SIC1 #39	C-8	Christopher Rokosh	21	NO	8/25	ICP 0600	ICP 2000
HC2I San Isabele Reg	C-10	Chris Sarier	21	NO	8/25	ICP 0600	ICP 2000
ENG6 North Idaho Fire	E-6	Gabe Guier	3	No	8/25	ICP 0600	ICP 2000
ENG6 Northwest Mgt	E-9	Chris Terwilliger	3	NO	8/25	ICP 0600	ICP 2000
ENG6 #3602	E-30	Tate Cavill		NO		ICP 0600	ICP 2000
ENG6 DS Fire Suppression	E-34	Robert Dagnall	3	NO	8/26	ICP 0600	ICP 2000
ENG6 Peanut Pie	E-35		3	NO		ICP 0600	ICP 2000
ENG6 White Horse Forestry	E-55	Jason McGaughy	3	NO	8/25	ICP 0600	ICP 2000
ENG6 Outback Firefighting	E-60	Wes John	3	NO	8/25	ICP 0600	ICP 2000
ENG6 Flatrock Contracting	E-61	Cody Blair	3	NO	8/25	ICP 0600	ICP 2000
ENG6 Brockway Contracting	E-62	Allan Brockway	3	NO	8/25	ICP 0600	ICP 2000
DOZ2 Bonnalie	E-14	Adam Alan	2	NO	8/26	ICP 0600	ICP 2000
DOZ2 Flash Excavation	E-64	Gordon Eckel	2	NO	8/24	ICP 0600	ICP 2000
SKG3 Bonnalie	E-9			NO		ICP 0600	ICP 2000
WTS2 Tender Keatts Ranch	E-2	Gary Wikum		NO	8/25	ICP 0600	ICP 2000
WTS2	E-38	Larry Lewis		NO	8/26	ICP 0600	ICP 2000
SOF2		Dombrowske/Mayer(t)	2	NO	8/27	ICP 0600	ICP 2000
READ	O-56	Larry Geffre	1	NO	8/26	ICP 0600	ICP 2000
MEDIC 1	E-18 O-11	Armistead / Sanders	1	NO	8/27	ICP 0600	ICP 2000
7. Control Operations							
<ul style="list-style-type: none"> Assess structures and implement structure protection as needed. Continue to scout and implement a containment strategy for the division. 							
8. Special Instructions							
<p>Prioritization of all control or containment actions taken during the operational period in this Division will be at the discretion of the DIVS. Actions may have to be taken by the DIVS that are not enumerated in today's IAP. These actions would be a result of a significant change in actual or expected fire behavior over and above that anticipated at the time the IAP was prepared. These actions will be coordinated with and approved by the OSC whenever possible.</p> <p>*Lewiston Ambulance will patrol east side of river. Contact resource through ICP Communications via local command channel.</p>							
9. Division/Group Communication Summary							
Function	Channel	Frequency-RX	Frequency-TX	Tone		System	Channel
Command	8	168.0750	170.4250	131.8			
Tactical Division	1	168.0500	168.0500	131.8			
Air to Ground	12	166.9500	166.9500				
Prepared by (RESL) Clint Kolarich / Justin Query		Approved by (Planning Section Chief) Paul Fieldhouse		Date August 16, 2015		Time 2100	

DIVISION ASSIGNMENT LIST				1. Branch Lolo 2			2. Division/Group Echo	
3. Incident Name Clearwater Complex				4. Operational Period: Day Date: August 17, 2015 Time: 0600 - 2000				
5. Operations Personnel								
Planning Ops	Brent Olson			Branch Director			Darryl Willis / Leroy Hoguine	
Line Ops	Bob Lippincott			Division Supervisor			Butler / Martin(t)	
				Air Operations Branch Director			Dennis Morton	
6. Resources Assigned this Period								
Strike Team/Task Force/ Resource Designator	RO #	Leader	Number Persons	Trans. Needed	Last Shift	Drop Off PT./Time	Pick Up PT./Time	
IHC San Juan		Jay Godson	20	NO		ICP 0600	ICP 2000	
ENG6	E-3			NO		ICP 0600	ICP 2000	
ENG6	E-58			NO		ICP 0600	ICP 2000	
ENG6	E-1145			NO		ICP 0600	ICP 2000	
SKGN	E-11	Flannigan	1	NO		ICP 0600	ICP 2000	
WTS3 Raven Fire	E-28	Will Gadsby	3	NO		ICP 6000	ICP 2000	
DOZ2	E-94	Russert	1	NO		ICP 0600	ICP 2000	
WTS2	E-96	Smiley	1	NO		ICP 0600	ICP 2000	
TFLD		Thayer	1	NO		ICP 0600	ICP 2000	
SOF1		Dennis Talbert	2	NO		ICP 0600	ICP 2000	
7. Control Operations								
<ul style="list-style-type: none"> • Assess structures and implement structure protection as appropriate. • Hold and improve the Northeast flank. • Prepare to fire the indirect line from the East to Divs X break. • Scout indirect line East toward Crooked Creek. 								
8. Special Instructions								
<p>Prioritization of all control or containment actions taken during the operational period in this Division will be at the discretion of the DIVS. Actions may have to be taken by the DIVS that are not enumerated in today's IAP. These actions would be a result of a significant change in actual or expected fire behavior over and above that anticipated at the time the IAP was prepared. These actions will be coordinated with and approved by the OSC whenever possible.</p> <p>* Lewiston Ambulance will patrol east side of river. Contact resource through ICP Communications via local command channel.</p>								
9. Division/Group Communication Summary								
Function	Channel	Frequency-RX	Frequency-TX	Tone			System	Channel
Command	8	168.0750	170.4250	131.8				
Tactical Division	2	168.2000	168.2000	131.8				
Air to Ground	12	166.9500	166.9500					
Prepared by (RESL)			Approved by (Planning Section Chief)			Date		Time
Clint R. Kolarich / Justin Query			Paul Fieldhouse			August 16, 2015		2100

DIVISION ASSIGNMENT LIST	1. Branch Lolo 2	2. Division/Group Foxtrot
---------------------------------	----------------------------	-------------------------------------

3. Incident Name Clearwater Complex	4. Operational Period: Day Date: August 17, 2017 Time: 0600 - 2000
---	--

5. Operations Personnel

Planning Ops	Brent Olson	Division Supervisor	Travis Pfister
Line Ops	Bob Lippincott	Air Operations Branch Director	Dennis Morton

6. Resources Assigned this Period

Strike Team/Task Force/ Resource Designator	RO #	Leader	Number Persons	Trans. Needed	Last Shift	Drop Off PT./Time	Pick Up PT./Time
T2IA Minnesota 7	C-		19	NO		ICP 0600	ICP 2000
ENG6	E-102			NO		ICP 0600	ICP 2000
ENG6	E-111			NO		ICP 0600	ICP 2000
DOZ2 Cook and Sons	E-21	Dustin Cornett	1	NO		ICP 0600	ICP 2000
DOZ	E-133		1	NO		ICP 0600	ICP 2000
SKG3 Timber Trail Spur	E-12	Holiday	1	NO		ICP 0600	ICP 2000
WTS2	E-91		5	NO		ICP 0600	ICP 2000
Fall Module		Evans / Chipwood	2	NO		ICP 0600	ICP 2000
SOF1		Knapstead / Thurlow	2	NO		ICP 0600	ICP 2000

7. Control Operations
- Assess structures and implement structure protection as appropriate.
 - Construct direct line and cold trail where possible from Caribel Spike North to Lolo Creek.
 - Construct direct line and cold trail where possible from Caribel Spike East along the Caribel Road to the Foxtrot/Romeo break.
 - Look for opportunities to tie fire off into Lolo Creek.

8. Special Instructions

Prioritization of all control or containment actions taken during the operational period in this Division will be at the discretion of the DIVS. Actions may have to be taken by the DIVS that are not enumerated in today's IAP. These actions would be a result of a significant change in actual or expected fire behavior over and above that anticipated at the time the IAP was prepared. These actions will be coordinated with and approved by the OSC whenever possible.

* Lewiston Ambulance will patrol east side of river. Contact resource through ICP Communications via local command channel.

9. Division/Group Communication Summary

Function	Channel	Frequency-RX	Frequency-TX	Tone	System	Channel
Command	8	168.0750	170.4250	131.8		
Tactical Division	3	168.6000	168.6000	131.8		
Air to Ground	13	168.3750	168.3750			

Prepared by (RESL) Clint R. Kolarich / Justin Query	Approved by (Planning Section Chief) Paul Fieldhouse	Date August 16, 2015	Time 2100
--	---	-------------------------	--------------

DIVISION ASSIGNMENT LIST

1. Branch

Lolo 2

2. Division/Group

Romeo

3. Incident Name

Clearwater Complex

4. Operational Period:

Date: August 17, 2015 Time: 0600 - 2000

5. Operations Personnel

Planning Ops	Brent Olson	Division Supervisor	Marvin Matheson
Line Ops	Bob Lippincott	Air Operations Branch Director	Dennis Morton

6. Resources Assigned this Period

Strike Team/Task Force/ Resource Designator	RO #	Leader	Number Persons	Trans. Needed	Last Shift	Drop Off PT./Time	Pick Up PT./Time
ENG4	E-23	Terry Williams		NO		ICP 0600	ICP 2000
ENG6	E-27	Hawthorne		NO		ICP 0600	ICP 2000
ENG6	E-29	Ornery		NO		ICP 0600	ICP 2000
DOZ2	E-13	Bennelly		NO		ICP 0600	ICP 2000
SKG3	E-78	Byron Vosberg		NO		ICP 0600	ICP 2000
WTS2	E-92	Mark Swanson	1	NO		ICP 0600	ICP 2000
HEQB		Cindy Leuth	1	NO		ICP 0600	ICP 2000
SOFR		Knapstad/Thurlow (T)	2	NO		ICP 0600	ICP 2000
Fall Module		Brothers		NO		ICP 0600	ICP 2000

7. Control Operations

- Assess structures and implement structure protection as appropriate.
- Keep fire West of Tom Taha Creek.
- Keep fire North of Caribel Road.
- Scout and continue to construct control line along East flank.

8. Special Instructions

Prioritization of all control or containment actions taken during the operational period in this Division will be at the discretion of the DIVS. Actions may have to be taken by the DIVS that are not enumerated in today's IAP. These actions would be a result of a significant change in actual or expected fire behavior over and above that anticipated at the time the IAP was prepared. These actions will be coordinated with and approved by the OSC whenever possible.

* Lewiston Ambulance will patrol east side of river. Contact resource through ICP Communications via local command channel.

9. Division/Group Communication Summary

Function	Channel	Frequency-RX	Frequency-TX	Tone	System	Channel
Command	8	168.0750	170.4250	131.8		
Tactical Division	4	166.7250	166.7250	131.8		
Air to Ground	13	168.3750	168.3750			

Prepared by (RESL)

Clint R. Kolarich / Justin Query

Approved by (Planning Section Chief)

Paul Fieldhouse

Date

August 16, 2015

Time

2100

DIVISION ASSIGNMENT LIST				1. Branch Lolo 2		2. Division Tango		
3. Incident Name Clearwater Complex				4. Operational Period: Day Date: August 17, 2015 Time: 0600 - 2000				
5. Operations Personnel								
Planning Ops		Brent Olson		Branch Director		Steve Creech		
Line Ops		Bob Lippincott		Division Supervisor		Drew Daily		
				Air Operations Branch Director		Dennis Morton		
6. Resources Assigned this Period								
Strike Team/Task Force/ Resource Designator		RO #	Leader	Number Persons	Trans. Needed	Last Shift	Drop Off PT./Time	Pick Up PT./Time
IHC Navajo		C-	Van Smith	19	NO		ICP 0600	ICP 2000
T2IA Wisconsin 6		C-	Lloyd Pete	20	NO		ICP 0600	ICP 2000
ENG6		E-11	Kenny Mayo	2	NO		ICP 0600	ICP 2000
ENG6		E-48	Will Cartin	3	NO		ICP 0600	ICP 2000
ENG6		E-103	Matt Lohn	3	NO		ICP 0600	ICP 2000
ENG6		E-107		3	NO		ICP 0600	ICP 2000
ENG6		E-108		3	NO		ICP 0600	ICP 2000
ENG6 Powell		E-671	Brunning	5	NO		ICP 0600	ICP 2000
DOZ2		E-132	Monture	1	NO		ICP 0600	ICP 2000
DOZ2			Spirit of 76	1	NO		ICP 0600	ICP 2000
WTS3 Alliance		E-1	Lyons Tender	1	NO		ICP 0600	ICP 2000
WTS3		E-31	Alliance	2	NO		ICP 0600	ICP 2000
WTS3 Smith Fire Fighting		E-45	Cory Smith	3	NO		ICP 0600	ICP 2000
WTS Pumper Cat		E-76		3	NO		ICP 0600	ICP 2000
WTS Pumper			Luhno	1	NO		ICP 0600	ICP 2000
WTS2		E-157	Stan Billingsley	1	NO		ICP 0600	ICP 2000
Fall Module			Frost	2	NO		ICP 0600	ICP 2000
Fall Module			Jake	2	NO		ICP 0600	ICP 2000
SOFR			Knapstead/Thurlow(t)	2	NO		ICP 0600	ICP 2000
Medic 10			Carson/Helena	2	NO		ICP 0600	ICP 2000
7. Control Operations								
<ul style="list-style-type: none"> • Continue to construct direct hand line, mop-up as appropriate, and implement structure projection on repeater site. • Construct control line from Beaverslide to Caribel. • Improve structure protection in Shenandoah subdivision. • Continue line construction from Kidder Road to Church Canyon. • Scout for line construction opportunities from Church Canyon to Kamiah. 								
8. Special Instructions								
<p>Prioritization of all control or containment actions taken during the operational period in this Division will be at the discretion of the DIVS. Actions may have to be taken by the DIVS that are not enumerated in today's IAP. These actions would be a result of a significant change in actual or expected fire behavior over and above that anticipated at the time the IAP was prepared. These actions will be coordinated with and approved by the OSC whenever possible.</p> <p>* Lewiston Ambulance will patrol east side of river. Contact resource through ICP Communications via local command channel</p>								
9. Division/Group Communication Summary								
Function	Channel	Frequency-RX	Frequency-TX	Tone			System	Channel
Command	8	168.0750	170.4250	131.8				
Tactical Division	5	166.7750	166.7750	131.8				
Air to Ground	14	169.2000	169.2000					

DIVISION ASSIGNMENT LIST			1. Branch Carrot Ridge			2. Division/Group X-ray	
3. Incident Name Clearwater Complex			4. Operational Period: Day Date: August 17, 2015 Time: 0600 - 2000				
5. Operations Personnel							
Planning Ops	Brent Olson		Branch Director			Darryl Willis/Leroy Holguin (T)	
Line Ops	Bob Lippincott		Division/Group Supervisor			John Shotzberger	
			Air Operations Branch Director			Dennis Morton	
6. Resources Assigned this Period							
Strike Team/Task Force/ Resource Designator	RO #	Leader	Number Persons	Trans. Needed	Last Shift	Drop Off PT./Time	Pick Up PT./Time
IHC Lewis & Clark		Matt Holstrom	20	NO		ICP 0600	ICP 2000
ENG6	E-112	John Timmermann		NO		ICP 0600	ICP 2000
SKGN	E-123			NO		ICP 0600	ICP 2000
DOZ2	E-93			NO		ICP 0600	ICP 2000
Heavy Equipment TF	E-123			NO		ICP 0600	ICP 2000
WTS2	E-95			NO		ICP 0600	ICP 2000
WTS2	E-154			NO		ICP 0600	ICP 2000
WTS2	E-201	Peterson		NO		ICP 0600	ICP 2000
WTS2	E-202	Willamette		NO		ICP 0600	ICP 2000
WTS2	E-203	Renville	1	NO		ICP 0600	ICP 2000
EXCA	E-134			NO		ICP 0600	ICP 2000
Fall Module	O-116			NO		ICP 0600	ICP 2000
Medic 4		Mitchell / Stokes		NO		ICP 0600	ICP 2000
7. Control Operations							
<ul style="list-style-type: none"> Assess structures and implement structure protection as appropriate. Scout and implement a containment strategy North of Greer. 							
8. Special Instructions							
<p>Prioritization of all control or containment actions taken during the operational period in this Division will be at the discretion of the DIVS. Actions may have to be taken by the DIVS that are not enumerated in today's IAP. These actions would be a result of a significant change in actual or expected fire behavior over and above that anticipated at the time the IAP was prepared. These actions will be coordinated with and approved by the OSC whenever possible.</p> <p>* Lewiston Ambulance will patrol east side of river. Contact resource through ICP Communications via local command channel.</p>							
9. Division/Group Communication Summary							
Function	Channel	Frequency-RX	Frequency-TX	Tone		System	Channel
Command	9	166.6125	168.4000	136.5			
Tactical Division	7	168.6000	168.6000	136.5			
Air to Ground	11	166.8750	166.8750				
Prepared by (RESL)		Approved by (Planning Section Chief)			Date		Time
Clint R. Kolarich / Justin Query		Paul Fieldhouse			August 16, 2015		2100

DIVISION ASSIGNMENT LIST				1. Branch Lawyer 2			2. Division/Group Golf / Juliet	
3. Incident Name Clearwater Complex				4. Operational Period: Day Date: August 17, 2015 Time: 0600 - 2000				
5. Operations Personnel								
Planning Ops		Brent Olson			Taskforce Leader		David Wonderaas	
Line Ops		Bob Lippincott			Air Operations Branch Director		Dennis Morton	
6. Resources Assigned this Period								
Strike Team/Task Force/ Resource Designator	RO #	Leader	Number Persons	Trans. Needed	Last Shift	Drop Off PT./Time	Pick Up PT./Time	
HC2 Nez Perce 1	C-7	Albert Penney	19	NO		ICP 0600	ICP 2000	
ENG6 RSK Enterprises	E-1	Gerald Calflooking	3	NO	8/26	ICP 0600	ICP 2000	
ENG6 Rocky Mtn Fire	E-2	Brian Cahoon	3	NO	8/26	ICP 0600	ICP 2000	
ENG6 Troy	E-4	Dan Hokanson	3	NO		ICP 0600	ICP 2000	
ENG6 Troy	E-5	John Lautenslauger	3	NO		ICP 0600	ICP 2000	
ENG5 Perkins Tender	E-24	Kyle Woodruff	3	NO	8/26	ICP 0600	ICP 2000	
ENG6 Troy	E-28		3	NO		ICP 0600	ICP 2000	
ENG6	E-32	Aaron Bucolz	3	NO	8/27	ICP 0600	ICP 2000	
ENG6 Peanut Pie	E-36		3	NO		ICP 0600	ICP 2000	
ENG6 Hotspot Fire Attack	E-56	Cathy Palin	3	NO	8/25	ICP 0600	ICP 2000	
ENG6 Brockway Construction	E-57	Mitchell Hicks	3	NO	8/25	ICP 0600	ICP 2000	
DOZ2 Bonnalie			1	NO		ICP 0600	ICP 2000	
WTS2 Fleischhauer	E-53	James Fleischhauer	1	NO	8/25	ICP 0600	ICP 2000	
WTS2 Bowes Tender	E-54	Kevin Bowes	1	NO		ICP 0600	ICP 2000	
WTS2 Clearwater	E-56	Charles Webber	1	NO	8/27	ICP 0600	ICP 2000	
EXCA	E-125	Jerry Cox	1	NO		ICP 0600	ICP 2000	
SOF2	O-1.66	Jim Parker	1	NO	8/25	ICP 0600	ICP 2000	
READ	O-56	Larry Geffre	1	NO	8/25	ICP 0600	ICP 2000	
CULS	O-77	Jared Norman	1	NO	8/26	ICP 0600	ICP 2000	
7. Control Operations <ul style="list-style-type: none"> Mop up and patrol as needed. 								
8. Special Instructions								
9. Division/Group Communication Summary								
Function	Channel	Frequency-RX	Frequency-TX	Tone		System	Channel	
Command	9	166.6125	168.4000	136.5				
Tactical Division	4	166.7250	166.7250	131.8				
Air to Ground	10	167.1250	167.1250					
Prepared by (RESL) Clint R. Kolarich / Justin Query		Approved by (Planning Section Chief) Paul Fieldhouse			Date August 16, 2015		Time 2100	

DIVISION ASSIGNMENT LIST				1. Branch Lawyer 2			2. Division/Group Greer		
3. Incident Name Clearwater Complex				4. Operational Period: Day Date: August 17, 2015 Time: 0600 - 2000					
5. Operations Personnel									
Planning Ops	Brent Olson			Division/Group Supervisor					
Line Ops	Bob Lippincott			Air Operations Branch Director			Dennis Morton		
6. Resources Assigned this Period									
Strike Team/Task Force/ Resource Designator	RO #	Leader	Number Persons	Trans. Needed	Last Shift	Drop Off PT./Time	Pick Up PT./Time		
HC21 Colorado River	C-9	Nathan Metz	20	NO		ICP 0600	ICP 2000		
SKG Bonnaile			1	NO		ICP 0600	ICP 2000		
WTS2 Bonnaile			1	NO		ICP 0600	ICP 2000		
7. Control Operations									
<ul style="list-style-type: none"> Mop up and hold for 100% containment. 									
8. Special Instructions									
<p>Prioritization of all control or containment actions taken during the operational period in this Division will be at the discretion of the DIVS. Actions may have to be taken by the DIVS that are not enumerated in today's IAP. These actions would be a result of a significant change in actual or expected fire behavior over and above that anticipated at the time the IAP was prepared. These actions will be coordinated with and approved by the OSC whenever possible.</p> <p>* Lewiston Ambulance will patrol east side of river. Contact resource through ICP Communications via local command channel.</p>									
9. Division/Group Communication Summary									
Function	Channel	Frequency-RX	Frequency-TX	Tone		System	Channel		
Command	8	168.0750	170.4250	131.8					
Tactical Division	5	166.7750	166.7750	131.8					
Air to Ground									
Prepared by (RESL)			Approved by (Planning Section Chief)			Date		Time	
Clint R. Kolarich / Justin Query			Paul Fieldhouse			August 16, 2015		2100	

DIVISION ASSIGNMENT LIST				1. Branch			2. Division/Group Structure		
3. Incident Name Clearwater Complex				4. Operational Period: Day Date: August 17, 2015 Time: 0600 - 2000					
5. Operations Personnel									
Planning Ops		Brent Olson			Division/Group Supervisor		Scott Waldron		
Line Ops		Bob Lippincott			Air Operations Branch Director		Dennis Morton		
6. Resources Assigned this Period									
Strike Team/Task Force/ Resource Designator		RO #	Leader		Number Persons	Trans. Needed	Last Shift	Drop Off PT./Time	Pick Up PT./Time
ENG4		E-102				NO		ICP 0600	ICP 2000
ENG6		E-110				NO		ICP 0600	ICP 2000
ENG6		E-115				NO		ICP 0600	ICP 2000
WTS3		E-153				NO		ICP 0600	ICP 2000
DOZ		E-1				NO		ICP 0600	ICP 2000
**Note: E-102 Can't take a hill...									
7. Control Operations									
<ul style="list-style-type: none"> Assess structures, including ingress and egress, and implement structure protection as appropriate. 									
8. Special Instructions									
<p>Prioritization of all control or containment actions taken during the operational period in this Division will be at the discretion of the DIVS. Actions may have to be taken by the DIVS that are not enumerated in today's IAP. These actions would be a result of a significant change in actual or expected fire behavior over and above that anticipated at the time the IAP was prepared. These actions will be coordinated with and approved by the OSC whenever possible.</p>									
131.89. Division/Group Communication Summary									
Function	Channel	Frequency-RX		Frequency-TX		Tone	System		Channel
Command	9	166.6125		168.4000		136.5	Closest repeater		
Tactical Division	6	168.2500		168.2500		131.8			
Air to Ground							Depends on Branch		
Prepared by (RESL)			Approved by (Planning Section Chief)			Date		Time	
Clint R. Kolarich / Justin Query			Paul Fieldhouse			August 16, 2015		2100	

INCIDENT RADIO COMMUNICATIONS PLAN

1. Incident Name: Clearwater Complex
 2. Date Time Prepared: 8/16/2015
 3. Operational Period Date/Time: 8/17/2015 0600-2200

4. Basic Radio Channel Utilization
 Mode: W= Wideband, N= Narrowband, D= Digital, M= Mixed

Radio Type	CH #	Function	Frequency	Tone/MAC	Mode	TGID	Assignment	Remarks
	1	Tactical 1	RX: 168.0500 TX: 168.0500	131.8			DIV A	
	2	Tactical 2	RX: 168.2000 TX: 168.2000	131.8			DIV E	
	3	Tactical 3	RX: 168.6000 TX: 168.6000	131.8			DIV F	
	4	Tactical 4	RX: 166.7250 TX: 166.7250	131.8			DIV R / J	
	5	Tactical 5	RX: 166.7750 TX: 166.7750	131.8			DIV T	
	6	Tactical 6	RX: 168.2500 TX: 168.2500	131.8			STRUCTURE / STAGING	
	7	Tactical 7	RX: 168.6000 TX: 168.6000	136.5			DIV G / X	
	8	CMD 1	RX: 168.0750 TX: 170.4250	131.8			LAWYER 2	RPT LOCATION - DOTY HILL
	9	CMD 7	RX: 166.6125 TX: 168.4000	136.5			LOLO	RPT LOCATION - WOODRAT
	10	A/G LAWYER 2	RX: 167.1250 TX: 167.1250				DIV J / G	
	11	A/G CARROT	RX: 166.8750 TX: 166.8750				CARROT RIDGE	
	12	A/G LOLO 1	RX: 166.9500 TX: 166.9500				DIV A / E	
	13	A/G LOLO 2	RX: 168.3750 TX: 168.3750				DIV F / R	
	14	A/G LOLO 3	RX: 169.2000 TX: 169.2000				DIV T	
	15	EMS 2	RX: 155.2800 TX: 155.2800	156.7				CONTACT MEDIVAC
	16	Air Guard	RX: 168.6250 TX: 168.6250	110.9			AIR GUARD	EMERGENCY USE

5. Prepared by (Communications Unit)
 Dustin Sene, COML 406-581-9816

Note: This is not a standard NWCG ICSS205 Form

MEDICAL PLAN

1. Incident/Project Name		2. Operational Period				
Clearwater Complex		08/17/2015				
3. Ambulance Services						
Name	Complete Address	Phone & EMS Frequency	Advanced Life Support (ALS)			
			Yes	No		
Kamiah Ambulance	507 Main St., Kamiah, ID	208-937-2447		No		
Kooskia Ambulance	401 Front St., Kooskia, ID	911	Must request			
Grangeville Ambulance	607 West Main St., Grangeville, ID	911	Yes			
Lewiston Ambulance	Staging at Lawyer 2	Command	Yes			
4. Air Ambulance Services						
Name	Phone	Type of Aircraft & Capability				
Life Flight (Lewiston)	1-800-232-0911	Agusta 119/ ALS				
MedStar (Pullman)	1-800-572-3210	ALS				
Grangeville Medical Taskforce	208-983-6800	ALS – EMT and Paramedic staged at Grangeville Airport				
5. Hospitals						
Name Complete Address	GPS Datum – WGS 84	Travel Time Air Gnd	Phone	Helipad		Level of Care Facility
	Lat: N 46.03.03 Long: W 116.21.1 VHF: A/G: 155.280 Hospital Dir: 155.340		208-962-3267	■		
Syringa Hospital 607 West Main St. Grangeville, ID Air access via Idaho County Airport	Lat: N 45.56.34 Long: W 116.07.31 VHF: A/G: 155.280 Hospital Dir: 155.340		208-983-1700		■	
Clearwater Hospital 301 Cedar St. Orofino, ID	Lat: N 46.29.01 Long: W116.15.30 VHF: A/G: 155.280 Hospital Dir: 155.340		208-476-4555	■		
Kamiah Clinic 518 Oak St. Kamiah, ID			208-935-2585		■	
Kooskia Clinic 22 N. Main St. Kooskia, ID			208-926-4776		■	
St. Joseph Regional Medical Center Lewiston, Idaho	Lat: N 46.24.58 Long: W 117.01.22 VHF: A/G: 155.280 Hospital Dir: 155.340		208-799-5799	■		

MEDICAL PLAN

6. Division Branch Group	Area Location Capability			
Branch - Lolo 2 Div. Alpha	EMS Responders & Capability:	Day: Medic 1 -Tyler Armistead, EMT & Jordan Sanders , EMT Night: Medic 2 - Roskam, & Richard EMT		
	Equipment Available on Scene:	Trauma kit, O2, Spinal Immobilization, Epi		
	Medical Emergency Channel:	Command Channel		
	ETA for Ambulance to Scene:			
	Air:	30 minutes		
	Ground:	20 minutes		
	Approved Helispot:			
	Lat:			
Long:				
Branch – Lawyer 2 Div. Golf & Juliet	EMS Responders & Capability:	Medic 3 – Jimmie Lewis & Taylor Garcia, EMT		
	Equipment Available on Scene:	Trauma kit, O2, Spinal Immobilization, Epi		
	Medical Emergency Channel:	Command Channel		
	ETA for Ambulance to Scene:			
	Air:			
	Ground:			
	Approved Helispot:			
	Lat:			
Long:				
Branch – Lawyer 2 Div. Tango	EMS Responders & Capability:	Medic 10 - Millie Carson, Bob Helena, EMT		
	Equipment Available on Scene:	Trauma Kit, O2, Spinal Immobilization, Epi		
	Medical Emergency Channel:	Command Channel		
	ETA for Ambulance to Scene:			
	Air:	30 minutes		
	Ground:	20 minutes		
	Approved Helispot:			
	Lat:			
Long:				
ICP-Medical 4647 Highway 13 Kooskia, ID	EMS Responders & Capability:	Roy Grant, Marilyn Davis EMT		
	Equipment Available on Scene:	Trauma kit, O2, AED, Epi		
	Medical Emergency Channel:	Command 1		
	ETA for Ambulance to Scene:			
	Air:	30 minutes		
	Ground:	15 minutes		
	Approved Helispot:			
	Lat:			
Long:				
Branch – Carrot Ridge Div. X Ray	EMS Responders & Capability:	Medic 4 – Ricky Mitchell & Glenn Stokes - EMT		
	Equipment Available on Scene:	Trauma Kit, O2, AED, Epi		
	Medical Emergency Channel:	Command 1		
	ETA for Ambulance to Scene:			
	Air:	25 minutes		
	Ground:	30 minutes		
	Approved Helispot:			
	Lat:			
Long:				
7. Name and Location	Remote Camp Location(s)			
TBD	TBD			
8. Prepared By (Medical Unit Leader)	9. Date/Time	10. Reviewed By (Safety Officer)	11. Date/Time	
Roy Grant	08/16/2015	Bob Habeck	08/16/2015	

MEDICAL PLAN

Medical Incident Report

FOR ALL MEDICAL EMERGENCIES: IDENTIFY ON SCENE INCIDENT COMMANDER BY NAME AND POSITION AND ANNOUNCE "MEDICAL EMERGENCY" TO INITIATE RESPONSE FROM IMT COMMUNICATIONS/DISPATCH.

Use items one through nine to communicate situation to communications/dispatch.

1. CONTACT COMMUNICATIONS/DISPATCH

Ex: "Communications, Div. Alpha. Stand-by for Priority Medical Incident Report." (If life threatening request designated frequency be cleared for emergency traffic.)

2. INCIDENT STATUS: Provide incident summary and command structure.

Nature of Injury/Illness		<i>Describe the injury (Ex: Broken leg with bleeding)</i>
Incident Name		<i>Geographic Name + "Medical" (Ex: Trout Meadow Medical)</i>
Incident Commander		<i>Name of IC</i>
Patient Care		<i>Name of Care Provider (Ex: EMT Smith)</i>

3. INITIAL PATIENT ASSESSMENT: Complete this section for each patient. This is only a brief, initial assessment. Provide additional patient info after completing this 9 Line Report.

Number of Patients:	Male / Female	Age:	Weight:
Conscious? <input type="checkbox"/> YES <input type="checkbox"/> NO = MEDEVAC!			
Breathing? <input type="checkbox"/> YES <input type="checkbox"/> NO = MEDEVAC!			
Mechanism of Injury: <i>What caused the injury?</i>			
Lat/Long (Datum WGS84) <i>Ex: N 40° 42.45' x W 123° 03.24'</i>			

4. SEVERITY OF EMERGENCY, TRANSPORT PRIORITY

SEVERITY	TRANSPORT PRIORITY
<input type="checkbox"/> URGENT-RED Life threatening injury or illness. <i>Ex: Unconscious, difficulty breathing, bleeding severely, 2° – 3° burns more than 4 palm sizes, heat stroke, disoriented.</i>	Ambulance or MEDEVAC helicopter. Evacuation need is IMMEDIATE.
<input type="checkbox"/> PRIORITY-YELLOW Serious Injury or illness. <i>Ex: Significant trauma, not able to walk, 2° – 3° burns not more than 1-2 palm sizes.</i>	Ambulance or consider air transport if at remote location. Evacuation may be DELAYED.
<input type="checkbox"/> ROUTINE-GREEN Not a life threatening injury or illness. <i>Ex: Sprains, strains, minor heat-related illness.</i>	Non-Emergency. Evacuation considered Routine of Convenience.

5. TRANSPORT PLAN:

Air Transport: (Agency Aircraft Preferred)

- | | | | |
|-----------------------------------|---|--------------------------------------|--------------------------------|
| <input type="checkbox"/> Helispot | <input type="checkbox"/> Short-haul/Hoist | <input type="checkbox"/> Life Flight | <input type="checkbox"/> Other |
|-----------------------------------|---|--------------------------------------|--------------------------------|

Ground Transport: Click here to enter text.

- | | | | |
|---------------------------------------|------------------------------------|------------------------------------|--------------------------------|
| <input type="checkbox"/> Self-Extract | <input type="checkbox"/> Carry-Out | <input type="checkbox"/> Ambulance | <input type="checkbox"/> Other |
|---------------------------------------|------------------------------------|------------------------------------|--------------------------------|

6. ADDITIONAL RESOURCE/EQUIPMENT NEEDS:

- | | | |
|--|--------------------------------------|--|
| <input type="checkbox"/> Paramedic/EMT(s) | <input type="checkbox"/> Crew(s) | <input type="checkbox"/> SKED/Backboard/C-Collar |
| <input type="checkbox"/> Burn Sheet(s) | <input type="checkbox"/> Oxygen | <input type="checkbox"/> Trauma Bag |
| <input type="checkbox"/> Medication(s) | <input type="checkbox"/> IV/Fluid(s) | <input type="checkbox"/> Cardiac Monitor/AED |
| <input type="checkbox"/> Other (i.e. splints, rope rescue, wheeled litter) | | |

7. COMMUNICATIONS:

Function	Channel Name/Number	Receive (Rx)	Tone/NAC *	Transmit (Tx)	Tone/NAC *
<i>Ex: Command</i>	<i>Forest Rpt, Ch. 2</i>	<i>168.3250</i>	<i>110.9</i>	<i>171.4325</i>	<i>110.9</i>
COMMAND					
AIR-TO-GRND					
TACTICAL					

*(NAC for digital radio system)

8. EVACUATION LOCATION:

Lat/Long (Datum WGS84) <i>EX: N 40 42.45' x W 123 03.24'</i>	
Patient's ETA to Evacuation Location:	
Helispot/Extraction Size and Hazards:	

9. CONTINGENCY:

Considerations: If primary options fail, what actions can be implemented in conjunction with primary evacuation method? Be thinking ahead...

REMEMBER: Confirm ETA's of resources ordered
Act according to your level of training
Be Alert. Keep Calm. Think Clearly. Act Decisively.

MEDICAL PLAN

ASSIGNMENT-SPECIFIC MEDICAL EMERGENCY ACTION PLAN

Pre-Planning for today's assignment – See Page 2 IRPG

What are the likely hazards that could cause injuries? What kind of severe injuries?		
Who is the likely in-charge DIVS or overhead for an emergency in your assigned area today? (i.e. "Division Zulu")		
Who are the Medical personnel assigned to your part of the incident? What are their capabilities?		
Other Emergency Responders: fire dept, crash rescue, ambulance?		
Communications: Command channel, Air to Ground, Medical helicopters, local rescue/medical?		
Transportation methods available	Ground vehicle, drop point, coordinates, travel route?	
	Aircraft I.D, helispot names, coordinates? Hoist capable, internal transport	
	Other available methods - contingency	
Most likely workforce for evacuation		

Response checklist

Who takes charge?

- DIVS or designated Overhead manages the overall scene and evacuation process.
- Medical personnel and emergency responders manage patients and conduct rescues.
- OPS and IC make command decisions so the emergency can be given full attention and management. They continue to manage ongoing incident operations.

Response sequence:

- First, secure the scene and protect responders and patients from further injury.
- Clear the Command channel for "Emergency Traffic only" if this is a critical emergency. If not, inform Communications of non-critical-emergency status and use normal communications.
- Contact closest Medical personnel and DIVS or designated Overhead for response.
- Notify Communications to initiate Accident Action Plan response.

Information for Communications: (See Medical Incident Report, page 108, IRPG)

- Type and extent of injuries?
- Airway or breathing problems? Serious bleeding?
- Is an EMT present or needed? Are Paramedics (Advanced Life Support) needed?
- Specific location of patients (Lat/Long, access route, DP#, helicopter Landing Zone)?
- What type of transport is needed? Helicopter medevac, hoist, ambulance or ground transport?
- Name of contact person in charge of the scene.
- Do not use names of patients at any time.
- Medical Emergency Responders confer with Medical Unit Leader and DIVS or designated Overhead to determine if this is a critical emergency and what type of transport is needed.



Human Resource Message

August 17, 2015

5 Reminders

Behave in a manner that treats people with dignity, equity, courtesy and respect.

Horseplay is rough and rowdy play that does not contribute effectively to a productive and safe work environment.

This is an alcohol and non-prescription drug free incident.

Take responsibility for your actions and behaviors. Live by the following simple guideline: "If in doubt, don't do it."

Report any harassment or other inappropriate behavior you observe or experience.

STAY SAFE!!!

People are our most important resource.

Dale Tribby
Human Resource Specialist
406-951-4429

Jim Homison
Human Resource Specialist
Trainee
406-868-3566

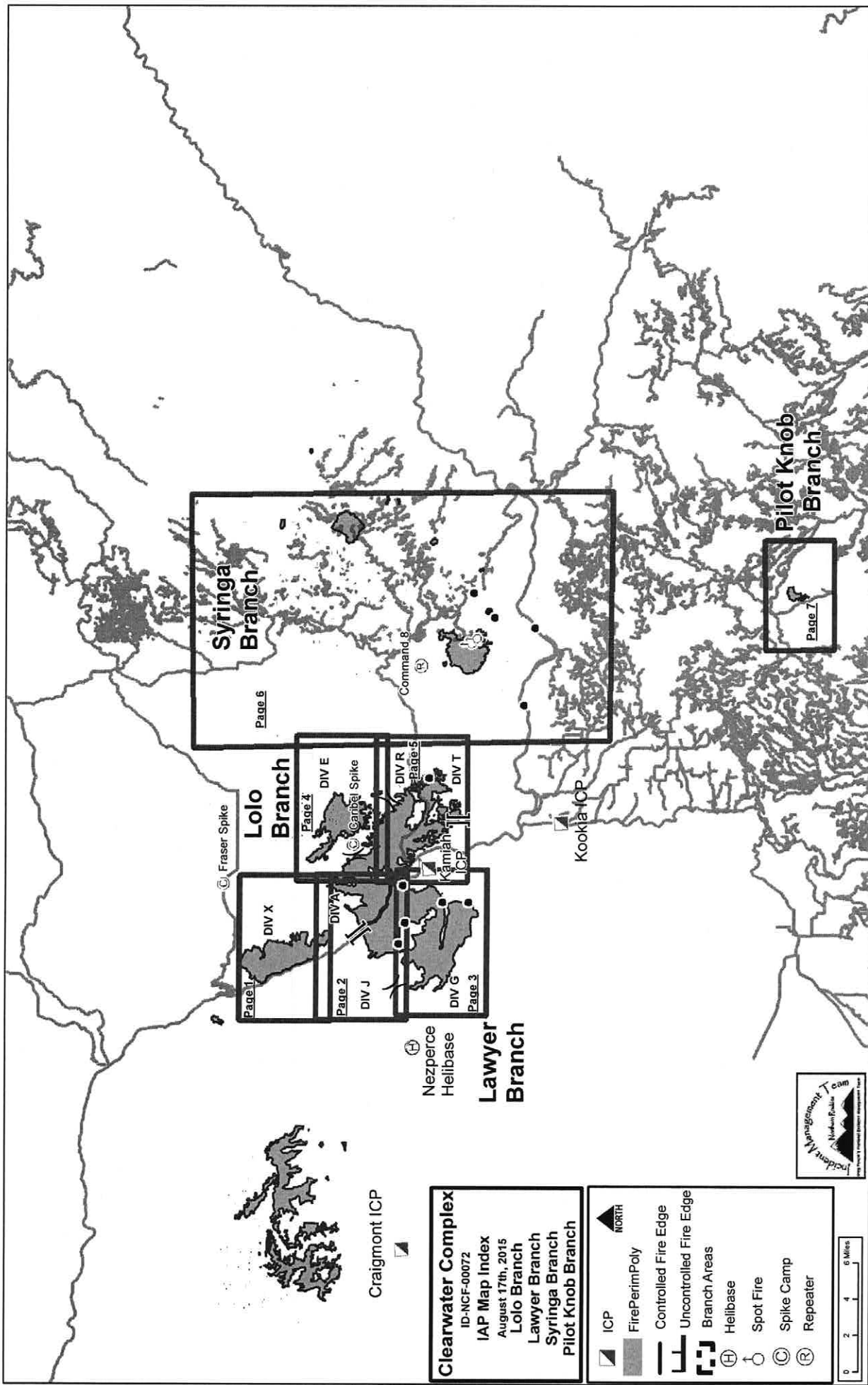
OFFICE CO-LOCATED WITH MEDICAL UNIT AT ICP

CLEARWATER CORRIDOR COMPLEX

ICP PHONE LIST 8/15/15

(PLEASE ADVISE COMMO OF ANY CHANGES, ADDITIONS OR CORRECTIONS)

Incident Commander / Liaison	208-926-4579
Information	208-926-4293
Call Center	208-926-4589
Operations	208-926-4578
Medical	208-926-0142
Communications	208-926-4229
Finance – Time	208-926-4577
Procurement	208-926-4186
Finance Fax	208-926-4177
Plans	208-926-0940
Check-in / Demob	208-926-4586
Plans Fax	208-926-4177
Situation	208-926-4564
Ordering	208-926-4248 / 208-926-4291
Supply	208-926-4590
Ground Support	208-926-4591



Clearwater Complex
 ID-NCF-00072
 IAP Map Index
 August 17th, 2015
 Lolo Branch
 Lawyer Branch
 Syringa Branch
 Pilot Knob Branch

- ICP
- FirePerimPoly
- Controlled Fire Edge
- Uncontrolled Fire Edge
- Branch Areas
- Helibase
- Spot Fire
- Spike Camp
- Repeater



Craigmont ICP

Nezperce Helibase
Lawyer Branch

Fraser Spike

Lolo Branch

Syringa Branch

Pilot Knob Branch

Command 8

Kookia ICP

Kaminah ICP

DIV X

DIV A

DIV J

DIV G

DIV E

DIV R

DIV T

Page 1

Page 2

Page 3

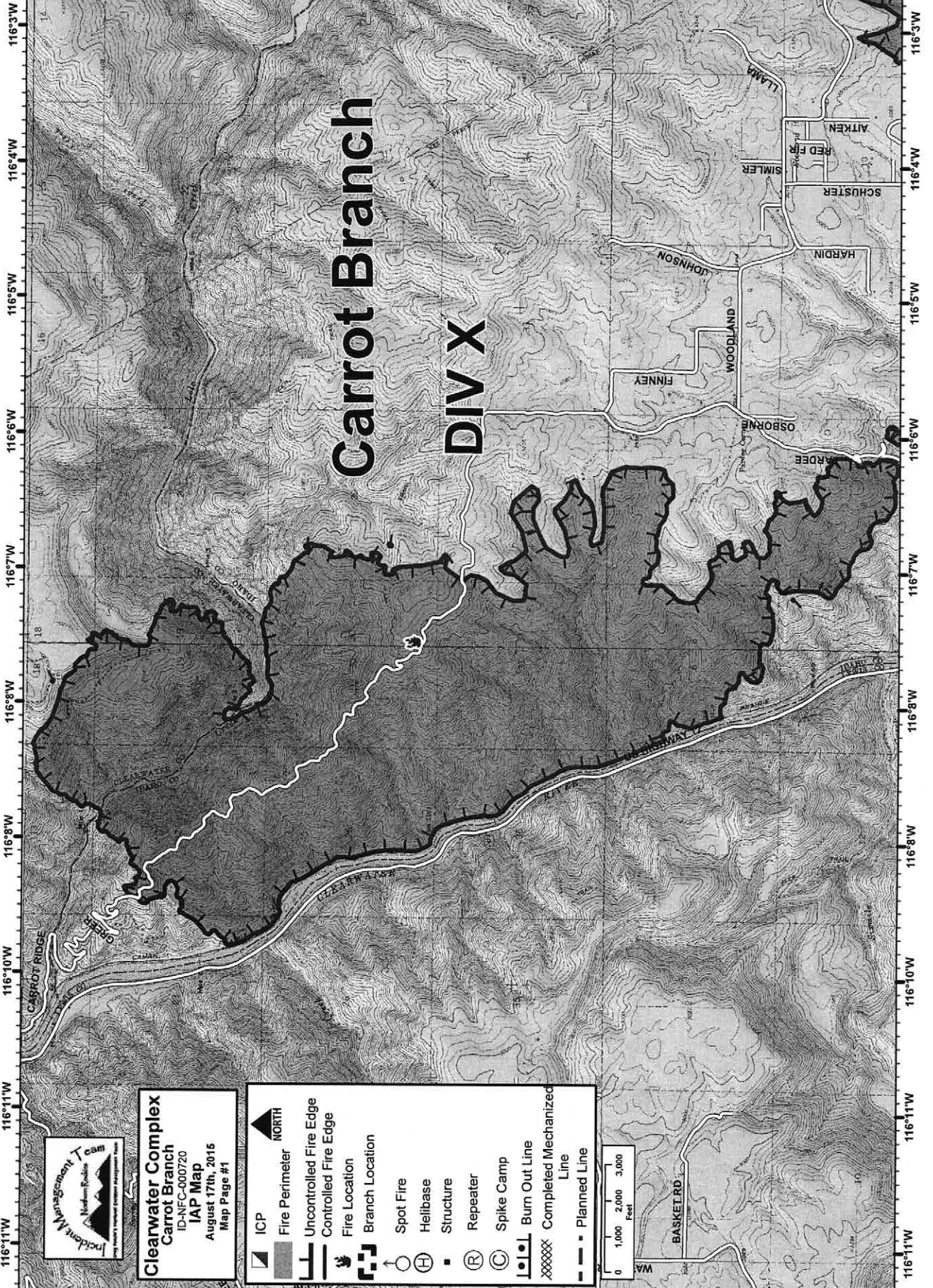
Page 4

Page 5

Page 6

Page 7

46°22'N 46°21'N 46°20'N 46°19'N

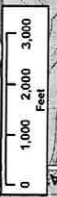


Carrot Branch DIV X

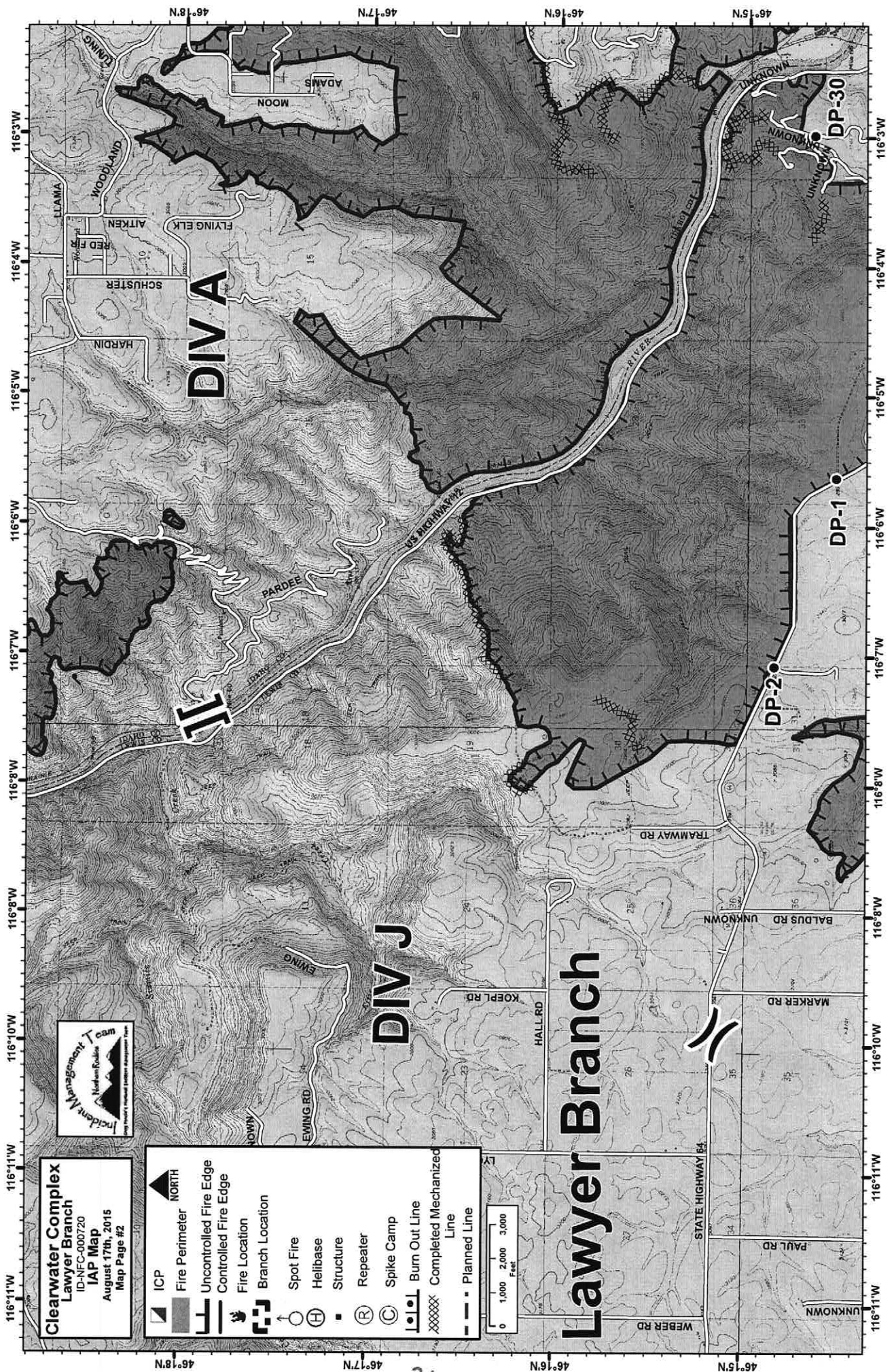
Clearwater Complex
Carrot Branch
ID-NFC-000720
IAP Map
August 17th, 2015
Map Page #1



- NORTH
- Fire Perimeter
- Uncontrolled Fire Edge
- Controlled Fire Edge
- Fire Location
- Branch Location
- Spot Fire
- Helibase
- Structure
- Repeater
- Spike Camp
- Burn Out Line
- Completed Mechanized Line
- Planned Line




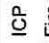

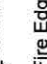
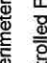
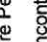
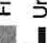


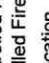
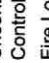

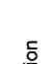


116°11'W 116°10'W 116°9'W 116°8'W 116°7'W 116°6'W 116°5'W 116°4'W 116°3'W



Clearwater Complex
Lawyer Branch
 ID-NFC-000720
 IAP Map
 August 17th, 2015
 Map Page #2



-  NORTH
-  ICP
-  Fire Perimeter
-  Uncontrolled Fire Edge
-  Controlled Fire Edge
-  Fire Location
-  Branch Location
-  Spot Fire
-  Helibase
-  Structure
-  Repeater
-  Spike Camp
-  Burn Out Line
-  Completed Mechanized Line
-  Planned Line



Lolo Branch

DIVE

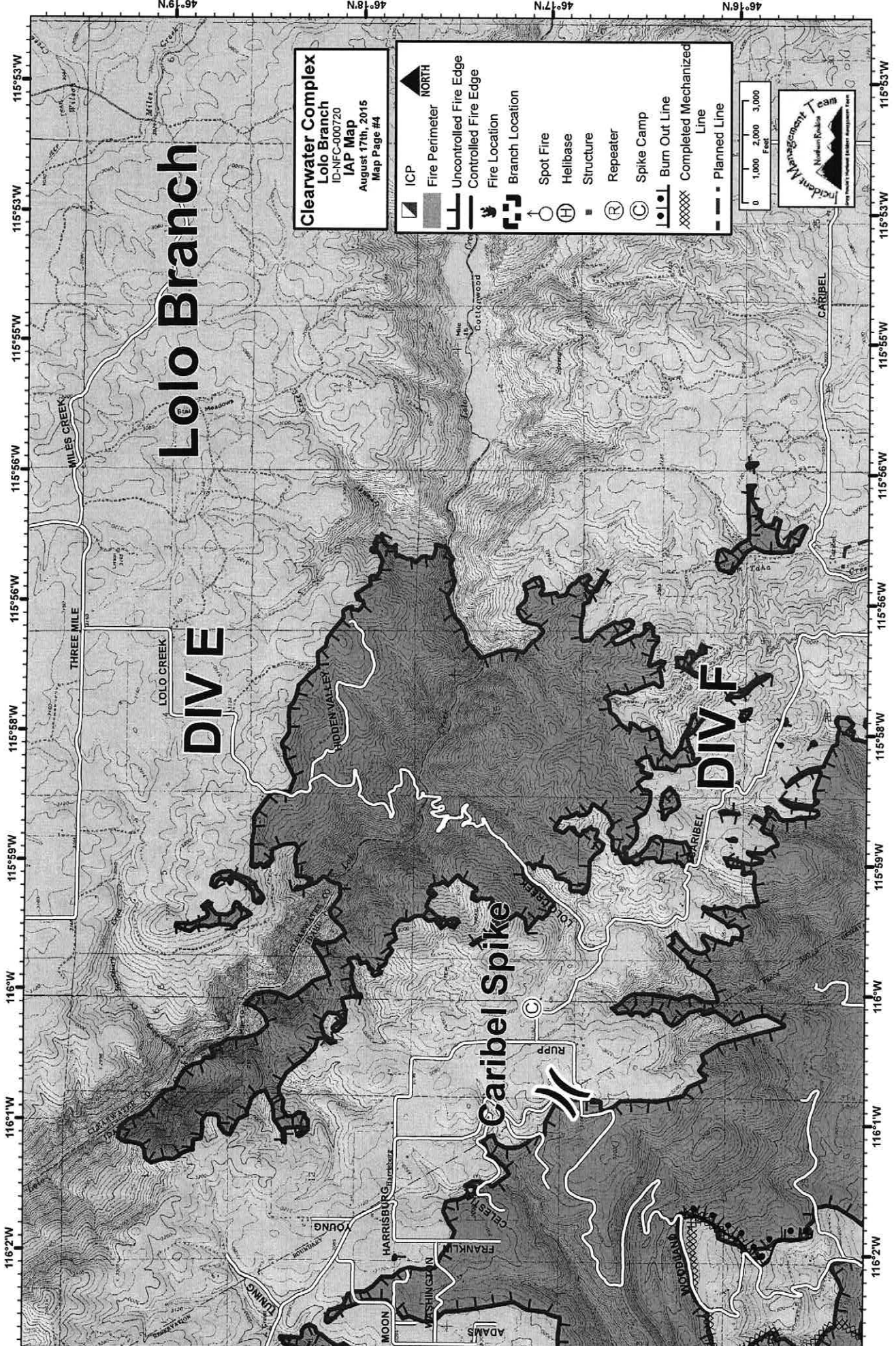
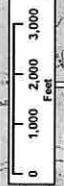
DIVE

Caribell Spike

Clearwater Complex
Lolo Branch
ID-NFC-000720
IAP Map
August 17th, 2015
Map Page #4

Legend

- ICP
- Fire Perimeter
- Uncontrolled Fire Edge
- Controlled Fire Edge
- Fire Location
- Branch Location
- Spot Fire
- Helibase
- Structure
- Repeater
- Spike Camp
- Burn Out Line
- Completed Mechanized Line
- Planned Line



46°19'N 46°18'N 46°17'N 46°16'N

116°2'W 116°1'W 115°59'W 115°58'W 115°56'W 115°55'W 115°53'W

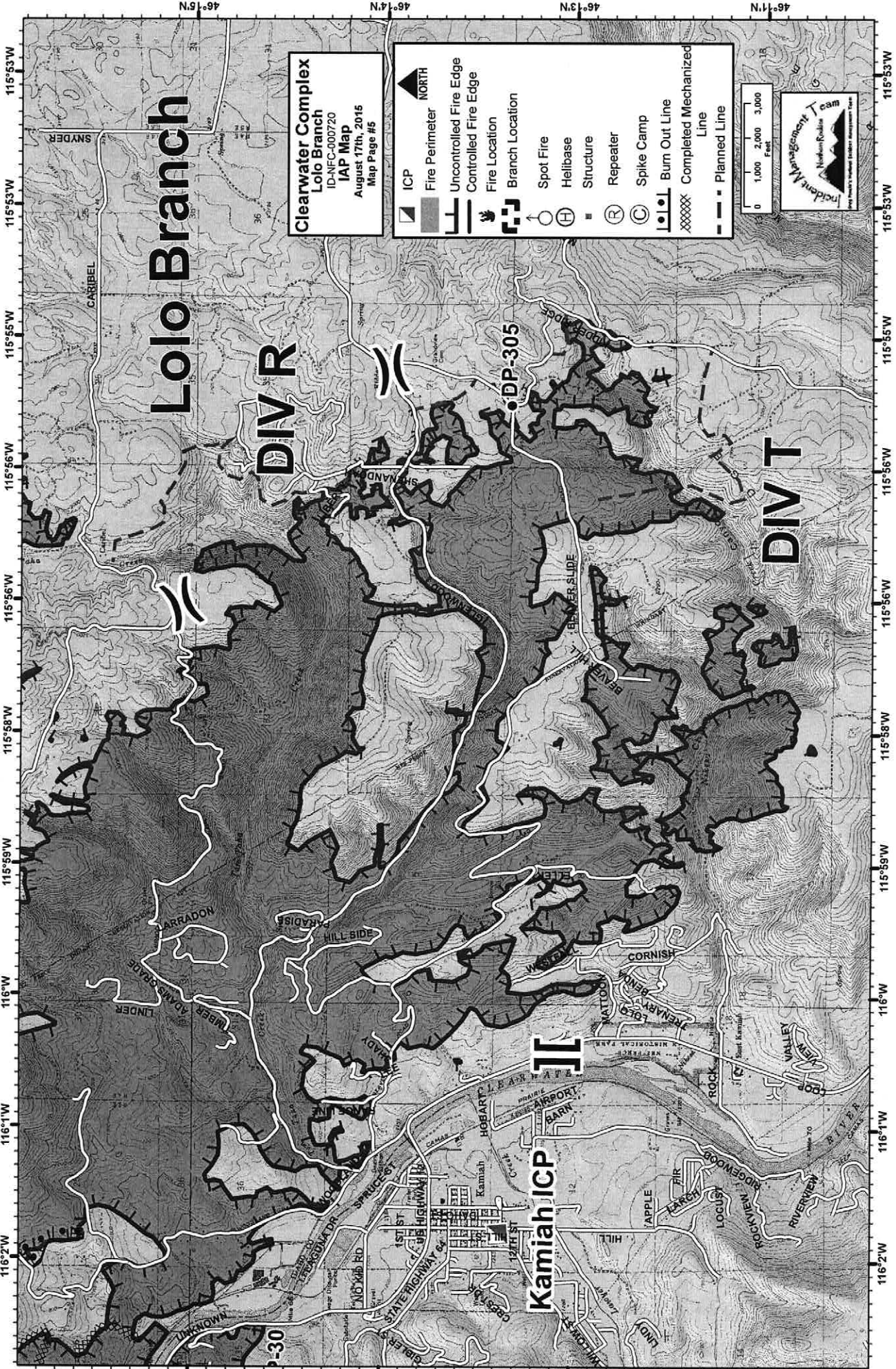
46°19'N 46°18'N 46°17'N 46°16'N

Lolo Branch

Clearwater Complex
Lolo Branch
ID-NFC-000720
IAP Map
August 17th, 2016
Map Page #5

Legend

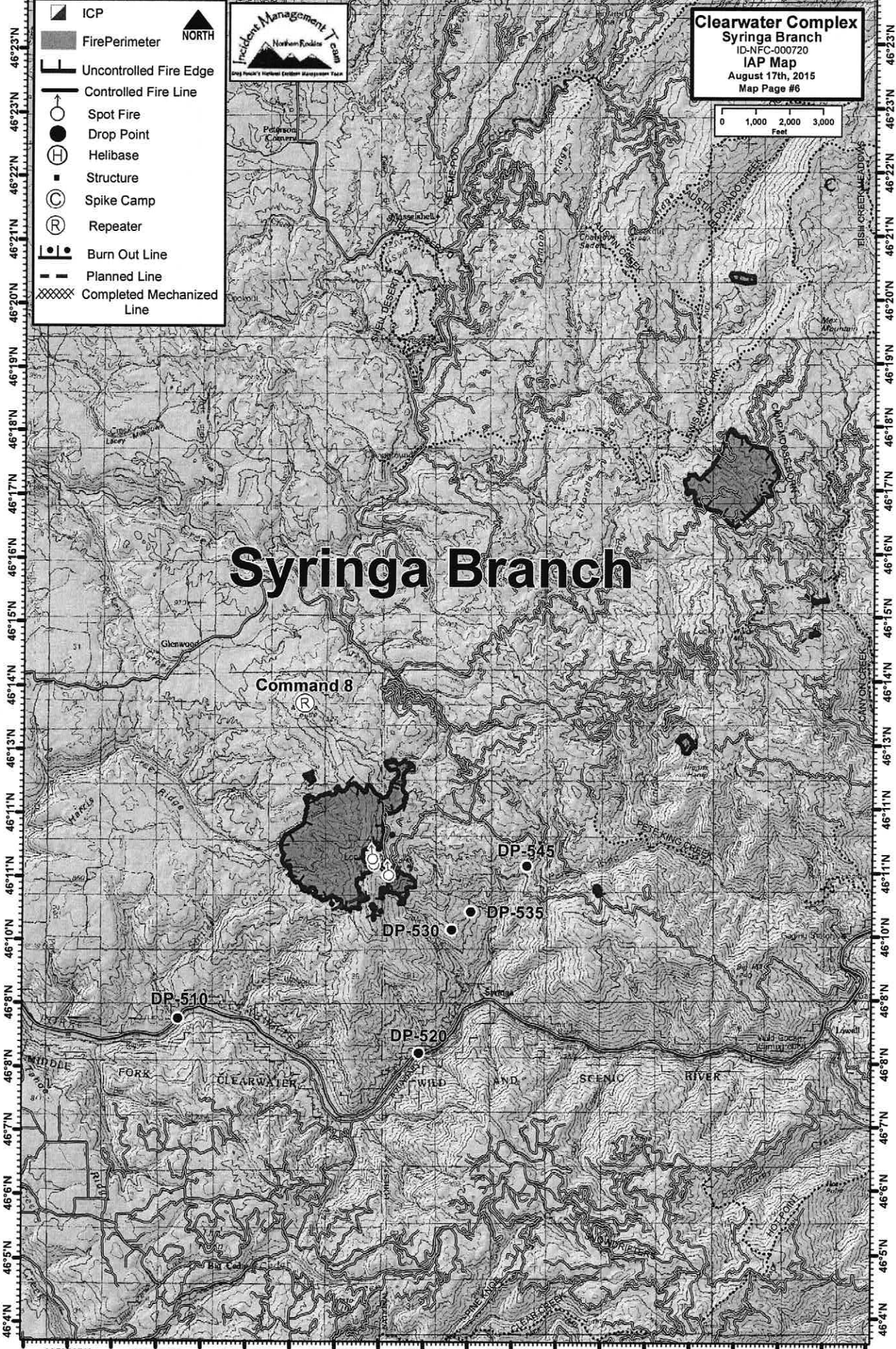
- ICP
- Fire Perimeter
- Uncontrolled Fire Edge
- Controlled Fire Edge
- Fire Location
- Branch Location
- Spot Fire
- Helibase
- Structure
- Repeater
- Spike Camp
- Burn Out Line
- Completed Mechanized Line
- Planned Line



116°2'W 116°1'W 115°59'W 115°58'W 115°56'W 115°55'W 115°53'W

46°15'N 46°14'N 46°13'N 46°11'N

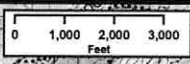
115°53'W 115°51'W 115°49'W 115°47'W 115°45'W 115°43'W 115°41'W 115°38'W 115°37'W



- ICP
- Fire Perimeter
- Uncontrolled Fire Edge
- Controlled Fire Line
- Spot Fire
- Drop Point
- Helibase
- Structure
- Spike Camp
- Repeater
- Burn Out Line
- Planned Line
- Completed Mechanized Line



Clearwater Complex
Syringa Branch
 ID-NFC-000720
IAP Map
 August 17th, 2015
 Map Page #6



Syringa Branch

Command 8

DP-510

DP-530

DP-535

DP-545

DP-520

115°53'W 115°51'W 115°49'W 115°47'W 115°45'W 115°43'W 115°41'W 115°38'W 115°37'W 115°35'W

**Clearwater Complex
Pilot Knob Branch**
ID-NFC-000720
IAP Map
August 17th, 2015
Map Page #7

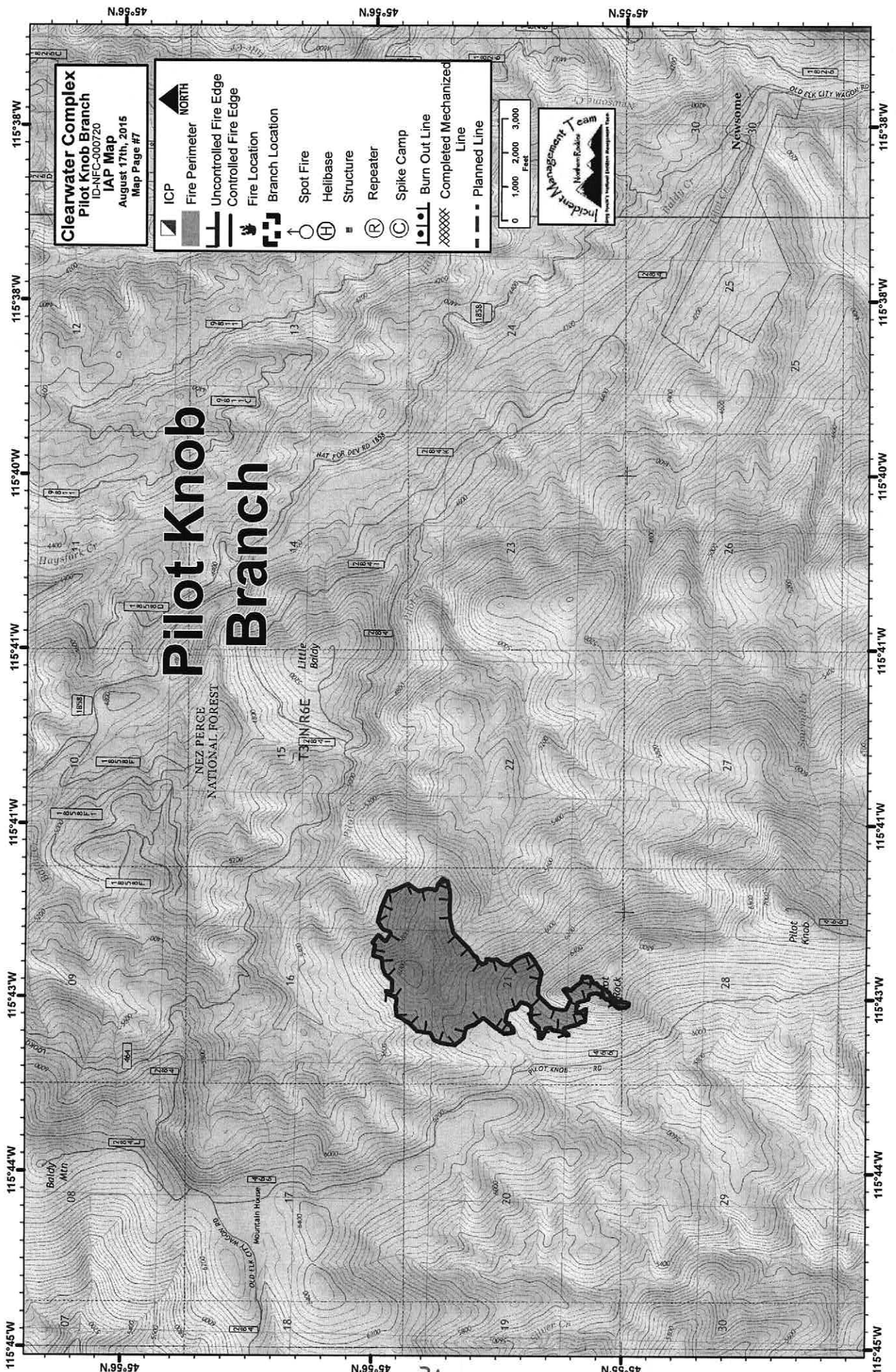
Legend

- ICP
- Fire Perimeter
- Uncontrolled Fire Edge
- Controlled Fire Edge
- Fire Location
- Branch Location
- Spot Fire
- Helibase
- Structure
- Repeater
- Spike Camp
- Burn Out Line
- Completed Mechanized Line
- Planned Line


Scale
0 1,000 2,000 3,000 Feet

Incident Management Team
Northwest Division
1975 Branch 7 National Fire Plan Management Unit

Pilot Knob Branch



Clearwater Complex
 ID-NCF-000720
Transportation Map
 August 17, 2015



Towns	ICP	Helibase	Drop Point	Repeater	Spike Camp
Local Road	Highway	Fire Perimeter			

