

# Clearwater Complex

## Incident Action Plan

Friday, August 21, 2015

Day Operations Period 0600 – 2000

Night Operations Period 1900 – 0600

LAWYER 2 BRANCH: ID-MCS-000646, PNJIAK (1502)

ALL OTHER BRANCHES: ID-NCF-000720, PIJ1JF (0117)

The Clearwater Complex is supporting a diversity of crews giving rise to potential safety issues. When communicating operational assignments, ensure that measurement conversions are accounted for and understood by all parties.


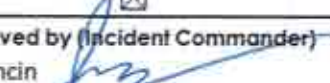
### U.S. to Metric to U.S. Conversions

Acres	X	0.405	=	Hectares	X	2.471	=	Acres
Inches	X	2.540	=	Centimeters	X	0.394	=	Inches
Feet	X	0.305	=	Meters	X	3.280	=	Feet
Yards	X	0.914	=	Meters	X	1.094	=	Yards
Miles	X	1.609	=	Kilometers	X	0.621	=	Miles
Gallons	X	3.785	=	Liters	X	0.264	=	Gallons
Pounds	X	0.454	=	Kilograms	X	2.205	=	Pounds
Miles/Hour	X	1.609	=	Kilos/Hour	X	0.621	=	Miles/Hour

Fahrenheit to Celsius =  
 $(F-32) \times 5/9$

Celsius to Fahrenheit =  
 $(C \times 9/5) + 32$



INCIDENT OBJECTIVES	1. Incident Name Clearwater Complex	2. Date 08/20/2015	3. Time 1300
4. Operational Period: 08/21/2015 0600-2000			
<p>5. General Control Objectives for the Incident (Include alternatives)</p> <p><b><u>Leaders Intent</u></b></p> <ol style="list-style-type: none"> <li>1. Reduce and /or eliminate impacts caused by the Clearwater Complex to residents, businesses, and critical infrastructure ensuring public, firefighter, and aviation safety. Ensure that all incident actions reflect this commitment to safety through sound risk assessment, adherence to the 10 standard firefighting orders, mitigation of the 18 situations that shout watch out and LCES. If you cannot mitigate a tactical hazard to an acceptable level of risk, do not implement the corresponding tactical action. Do not let cost objectives minimize safety and risk management. Ensure that Leader's Intent is clearly communicated and understood.</li> <li>2. Coordinate incident management activities with Idaho Department of Lands, US Forest Service, Nez Perce Tribe, Bureau of Indian Affairs, and County/Municipal entities including but not limited to; suppression actions, support needs, and rehabilitation. Tactics will be most aggressive where values at risk are high. Take advantage of natural features such as breaks in fuels, topographic features, or changes in weather.</li> <li>3. Treat all Incident Management personnel, cooperators, contractors and local publics with dignity and respect. Ensure prompt and accurate communication that fosters discussions, embraces local knowledge, and encourages interactions with the hosting agencies, local cooperators, and private landowners.</li> <li>4. Coordinate closely with resource advisors to ensure that suppression impacts to natural and cultural resources are kept to a minimum.</li> </ol> <p><b><u>Operational Objectives</u></b></p> <ol style="list-style-type: none"> <li>1. Check the fires' growth and provide for point protection where structures are threatened.</li> <li>2. Branch priorities are Lolo 2, Carrot Ridge, and Lawyer 2. Assess community protection opportunities in Kamiah, Weippe, Fraser, Pardee Corner, Woodland, Harrisburg, Caribel, and Glenwood; strive to reduce impacts to private and commercial structures in these communities and private or governmental structures in outlying areas.</li> <li>3. Reduce the probability of fire disrupting or making undue impacts to infrastructure such as roadways (especially Highways 12, 64, 11, and 162 as well as 100 Road), power lines (prioritize transmission over distribution), and communication sites.</li> <li>4. Develop contingency plans that identify locations and specific actions to be taken in the event that the fire threatens to or moves significantly.</li> </ol> <p><b><u>Management Objectives</u></b></p> <ol style="list-style-type: none"> <li>1. Provide assistance for initial attack as requested coordinating all IA activities with Grangeville Dispatch.</li> <li>2. Protect waterways and riparian areas from incident management impacts. Document the placement and quantity of long term retardant. Operations personnel should coordinate with appropriate READ(s) to document; and, if necessary, coordinate mitigation measures related to anadromous fisheries, watershed impacts, other sensitive species and cultural sites.</li> </ol>			
6. Weather Forecast for Period - See Attached Weather Forecast			
7. General Safety Message - See Attached Safety Message			
8. <b>Attachments (mark if attached)</b>			
<input checked="" type="checkbox"/> Incident Objectives – ICS 202	<input checked="" type="checkbox"/> Weather Forecast	<input checked="" type="checkbox"/> Communications Plan - ICS 205	
<input checked="" type="checkbox"/> Organization List - ICS 203	<input checked="" type="checkbox"/> Fire Behavior Forecast	<input checked="" type="checkbox"/> Medical Plan - ICS 206	
<input checked="" type="checkbox"/> Div. Assignment Lists - ICS 204	<input checked="" type="checkbox"/> Division Assignment Lists – ICS204	<input checked="" type="checkbox"/> Incident Maps	
<input checked="" type="checkbox"/> Safety Message	<input checked="" type="checkbox"/> Air Operations– ICS 220	<input checked="" type="checkbox"/>	
9. Prepared by (Planning Section Chief) Paul Fieldhouse (T) 	9. Approved by (Incident Commander) Greg Poncin 		

## ORGANIZATION ASSIGNMENT LIST

**1. Incident Name**

**Clearwater Complex**

**2. Date**  
**August 20, 2015**

**3. Time**  
**2100**

**4. Operational Period**

**August 21, 2015**

**0600-2000**

**Position**

**Name**

**5. Incident Commander and Staff**

**Incident Commanders:** **Greg Poncin, Dan Musgrave, Joe Brabender (T)**

**Safety Officer:** **Gerald Vickers, Bob Habeck**

**Information Officer:** **Leona Rodreick, Penny Bertram (T)**

**Liaison Officer:** **Rob Taylor, Kayla Jaquith, Chris Grove (T)**

**6. Agency**

**Agency**

**Name**

**IDL Area Manager:** **Zo Anderson**

**Nez Perce Tribe:** **John DeGroot**

**BLM:** **Robbin Boyce**

**Resource Advisor(s) BLM:** **Jared Hammatt**      **Zack Stewart**

**Resource Advisor:** **Larry Geffre - NPT**      **Jim Lutes (T)**

**7. Planning Section**

**Chief:** **Mike Kopitzke, Paul Fieldhouse (T)**

**Resources Unit:** **Clint Kolarich, Justin Query, Tanya Murphy(T)**

**Situation Unit:** **Rick Moore**

**Demobilization Unit:** **Laurie Oliver**

**GISS:** **Mark Slaten, Erin Nock**

**Documentation:** **George Bain**

**Training:** **Dale Tribby (T)**

**Fire Behavior:** **Rick Reitz**

**Computer Specialist:** **Amy Johnson, Tammy Lindberg**

**IMET:** **Makoto Moore**

**Human Resource Specialist:** **Dale Tribby, Jim Homison (T)**

**8. Logistics Section**

**Chief:** **Roylene Gaul, Jim Evanoff, Mike Wingard**

**Supply Unit:** **John Kastner**

**Facilities Unit:** **Charles Showers**

**Ground Support Unit:** **Darrel Steinberg**

**Communications Unit:** **Dustin Sene**

**Medical Unit:** **Roy Grant**

**Food Unit:** **Brett Malingo**

**Security Manager:** **Bill Dowdy**

**9. Operations Section**

**Planning Operations:** **Walt Tomascak, Mark Goeller**

**Line Operations:** **Bob Lippincott, Brent Olson**

**a. Branch: Lolo 2**

**Branch Director:** **Steve Creech/Scott Schrenk (T)**

**Division:** **Alpha**      **Trevor Papenfuss**

**Division:** **Foxtrot**      **Travis Pfister**

**Division:** **Romeo**      **Marvin Matheson/Willie Knudsen (T)**

**Division:** **Tango**      **Drew Dally**

**Group:** **Heavy Equip.**      **John Shotsberger**

**b. Branch: Carrot Ridge**

**Branch Director:** **Darrell Willis**

**Division:** **Echo**      **Leroy Holguin**

**Division:** **X-Ray**      **Ryan Butler/Lance Martin(T)**

**Task Force Leader:** **Golf/Juliet**      **David Wanderaas**

**Group:** **Structure**      **Scott Waldron/James Jessop (T)**

**Division/Group:** **Night**      **Derrick Moore**

**Division/Group:**

**Division/Group:**

**Division/Group:**

**Division/Group:**

**Division/Group:**

**b. Branch: Air Operations:**

**Air Operations Branch Director:** **Dennis Morton**

**Air Support Supervisor:** **Brian Campbell**

**Air Attack Group Supervisor:** **John Pollard**

**Air Attack Group Supervisor:** **Ken Wabaunsee**

**Air Attack Group Supervisor:** **Erik Haberstick**

**Air Attack Group Supervisor:** **Craig Campbell**

**10. Finance Section**

**Chief:** **Shirley Ehmann**

**Time:** **Charlotte Benson**

**Procurement:** **Wendy Stephenson**

**PTRC:** **Dawn Ullrey**

**Compensation/Claims Unit:** **Shirley Marsh**

**Cost Unit:** **Kevin Sweeney/Khon Viengkham (T)**

Prepared by (Resource Unit Leader)

Clint R. Kolarich

*Clint R. Kolarich*

# Safety Message

## Effective Communication

*Effective communication is the backbone of safety*

- Implement effective communication procedures - be brief, clear, concise, and to-the-point.
- Give a good comprehensive briefing. Refer to the briefing checklist inside the back cover of the IRPG.
- Confirm information is received, acknowledged, and understood.
- Keep a continuous information flow (e.g., updates on weather, fire behavior, work progress; changes in strategy/tactics; arrival of additional resources; solicit feedback).
- Establish emergency check-in procedures.
- Ensure all resources have a communication link.

### Five Communication Responsibilities for All Firefighters

- Brief others, face-to-face is preferred
- Debrief your actions to your supervisor
- Identify hazards and make them known
- Acknowledge messages and content
- Ask questions when you don't understand

*Practice Effective Communication – Expect it from Others*

**Clearwater Complex**

Operational Period 8-21-15



# INCIDENT Weather Forecast



FORECAST NO: 8

NAME OF INCIDENT: Clearwater Complex

PREDICTION FOR: DAY & NIGHT SHIFT

UNIT: Nez Perce – Clearwater NF

SHIFT DATE: Friday, August 21 2015

SIGNED:

TIME AND DATE

Makoto Moore

FORECAST ISSUED: 2000 Thursday, August 20, 2015

Incident Meteorologist

**\*\*RED FLAG WARNING TODAY 0800 - 2000\*\***

**WEATHER DISCUSSION:**

Poor RH recovery overnight...increasing west to southwest winds ahead of an approaching cold front with shifting winds behind the front...and ongoing fire activity has prompted the issuance of a Red Flag Warning for the Complex today from 8 am to 8 pm. The cold front is expected to sweep across the fire area between 1300 and 1400 this afternoon...with winds behind the front then shifting to a more northwest direction and remaining gusty. A few dry thunderstorms will be possible as well.

**WEATHER FORECAST: FRIDAY**

**WEATHER:** Partly cloudy. Smoke-filled valleys early. Frontal passage 1300-1400 with isolated thunderstorms.

**MAX TEMPERATURE:** 77-82 F

**MIN RELATIVE HUMIDITY:** 20-25%

**CWR:** 0%.

**20 FT WINDS:** West-southwest 6-8 mph through 0800...increasing to 12-18 mph until 1200...then 15-20 mph with gusts to 25 mph until 1400. After 1400...northwest 15-20 mph.

**HAINES INDEX:** 4...Low

**LAL:** 1 until 1400...then 2.

**STABILITY/INVERSION:** Inversion this morning at 200 ft AGL until 0700...lifting to ridgetop through 0900...then mixing to 6000 ft AGL. Valleys should improve quickly due to the stronger winds.

**WEATHER FORECAST: FRIDAY NIGHT**

**WEATHER:** Mostly cloudy with isolated thunderstorms until 2000...then clearing skies late. Smoke-filled valleys late.

**MIN TEMPERATURE:** 47-52 F

**MAX RELATIVE HUMIDITY:** 70-75%

**CWR:** 0%

**20 FT WINDS:** Northwest 15-20 mph through 2000...then decreasing to 5-8 mph. Downslope/downvalley 3-6 mph after 0200.

**HAINES INDEX:** 4...Low

**LAL:** 2 until 2000...then 1.

**EXTENDED FORECAST: SATURDAY - MONDAY**

**Saturday:** Partly cloudy in the morning...then clearing skies in the afternoon. Max Temp/Min RH: 78-84 F/18-25% . Min Temp/Max RH: 44-51 F/55-65%. West-northwest winds 4-9 mph

**Sunday and Monday:** Mostly sunny. Max Temp/Min RH: 84-92 F/13-20% . Min Temp/Max RH: 53-63 F/50-60%. West to southwest winds 4-8 mph...increasing to 6-12 mph on Monday.

*Sunrise: 551 am    Sunset: 743 pm*

Forecast#: 8	Type of Fire: <b>Wildfire</b>
Incident Name: <b>Clearwater Complex</b>	Operation Period: <b>08/21/2015 Day &amp; Night</b>
Date Issued: <b>08/20/2015</b>	Time Issue: 1800
Unit: IDL – Maggie Creek Supervisory Area	Signed: Reitz (FBAN)
<b>WEATHER</b>	
SUMMARY: See <i>INCIDENT Weather Forecast #8</i> .	
<b>FIRE BEHAVIOR FORECAST</b>	
<b>FIRE BEHAVIOR</b>	
<p><b>GENERAL:</b> Extremely dry fuels in all time-lag categories, steep topography, and wind support a rapidly spreading fire. Torching and spotting should be anticipated.</p> <p><b>Day Operational Period:</b> Under critical conditions (see <i>INCIDENT Weather Forecast</i>) surface fire may exhibit the following behaviors: rate of spread (ROS): 31 ch/hr (10 m/min) in timber (C7) or 345 ch/hr (115 m/min) in grass (O-1b), flame length (FL): 10 feet (3 m) in timber (C7) or 9 feet (3m) in grass (O-1b), probability of ignition (PI): 90%, spotting distance: 0.5 miles (800m) in timber (C7) or 0.4 miles (600m) in grass (O-1b). Anticipate torching and crowning.</p> <p><b>Night Operational Period:</b> Under critical conditions (see <i>INCIDENT Weather Forecast</i>) surface fire may exhibit the following behaviors: rate of spread (ROS): 22 ch/hr (7m/min) in timber (C7) or 137 ch/hr (46m/min) in grass (O-1b), flame length (FL): 7 feet (2m) in timber (C7) or 13 feet (4m) in grass (O-1b), probability of ignition (PI): 10%, spotting distance: 0.5 miles (800m) in timber (C7) or 0.6 miles (1km) in grass (O-1b). Anticipate torching and crowning.</p>	
<p><b>SPECIFIC: Lawyer 2 Branch (Divisions G and J):</b> Minimal fire activity is expected in divisions Gulf, and Juliet. Interior areas of unburned fuel persist. Smoldering points linger, primarily stumps. There is a possibility that spot fires, exterior to fire perimeter, may materialize.</p> <p><b>Lolo 2 Branch (Divisions A, E, F, R, and T):</b> Agricultural practices and pads with structures adjacent to wildland grass and conifer stringers complicate fuel complex. Interior areas of unburned fuels remain. Heat in fuel occupies isolated areas. There is a possibility that spot fires, exterior to fire perimeter, may still materialize.</p> <p><b>Carrot Ridge Branch (Division X):</b> Fire continues to spread within Lolo Creek on both sides of canyon. If fire leaves either side of canyon it will either encounter immature-to-mature mixed conifer overstory, with grass and shrub understory, or cured unburned agricultural fields. Spot fires will occur in either fuel.</p>	
<p><b>AIR OPERATIONS:</b> Smoke in atmosphere, smoke trapped under inversion, and smoke columns after inversion lifts may prevent opportunities for use of aerial resources.</p>	
<p><b>SAFETY:</b> Know what fire is doing at all times. Deploy lookouts with communication capability. Test your system to assure everything works. Receive regular updates from lookout. Look up, Look down, and Look all around. Situational awareness is important.</p>	

ASSIGNMENT LIST		1. Branch	2. Division/Group			
		Lolo 2		Alpha(1 of 2)		
3. Incident Name		4. Operational Period				
Clearwater Complex		Date: 08/21/2015		Time: 0600 – 2000 PST		
5. Operations Personnel						
Operations Chief	Bob Lippincott/Brent Olson Walt Tomascak/Mark Goeller		Division/Group Supervisor	Trevor Papenfuss		
Branch Director	Steve Creech/Scott Schrenk(T)		Air Operations Director	Dennis Morton		
6. Resources Assigned This Period						
Strike Team/Task Force/ Resource Designator	Last Shift	Leader	No. Pers.	Trans. Needed	Drop Off PT./Time	Pick Up PT./Time
C-10 HC2I San Isabel Reg	8/27	Chris Rokosh	21	NO	Caribel Spk 0600	Caribel Spk 2000
C-7 HC2 Nez Perce	8/25	Albert Penny	19	NO	Caribel Spk 0600	Caribel Spk 2000
C-40 HC2 Ontario C001	9/3	Elizabeth Pernsky	21	NO	Caribel Spk 0600	Caribel Spk 2000
E-6 ENG6 North Idaho Fire	8/25	Gabe Guier	3	NO	Caribel Spk 0600	Caribel Spk 2000
E-9 ENG6 Northwest Mgmt.	8/25	Chris Terwilliger	3	NO	Caribel Spk 0600	Caribel Spk 2000
E-152 ENG6 BLM LED#3602	8/26	Tate Cavill	4	NO	Caribel Spk 0600	Caribel Spk 2000
E-156 ENG6 DS Fire Suppression	8/26	Robert Dagnall	3	NO	Caribel Spk 0600	Caribel Spk 2000
E-157 ENG6 Peanut Pie	8/25	Sam Elkins	3	NO	Caribel Spk 0600	Caribel Spk 2000
E-60 ENG6 Outback Firefighting	8/25	Wes John	3	NO	Caribel Spk 0600	Caribel Spk 2000
E-62 ENG6 Brockway Contracting	8/25	Allan Brockway	3	NO	Caribel Spk 0600	Caribel Spk 2000
7. Control Operations						
<ul style="list-style-type: none"> <li>Assess structures and implement structure protection as needed.</li> <li>Hold and secure mechanical line south of Lolo Creek.</li> <li>Patrol and mop up all other control lines in the Division.</li> </ul>						
8. Special Instructions						
<ul style="list-style-type: none"> <li>Prioritization of all control or containment actions taken during the operational period in this division will be at the discretion of the DIVS. Actions may have to be taken by the DIVS that are not enumerated in today's IAP. These actions would be a result of a significant change in actual or expected fire behavior over and above that anticipated at the time the IAP was prepared. These actions will be coordinated with and approved by the OSC whenever possible.</li> <li>Lewiston Ambulance will patrol east side of river. Contact resource through ICP Communications via local command channel.</li> </ul>						

9. Division/Group Communication Summary					
Function	Frequency - RX	Frequency - TX	Tone	Channel	
Command RPT	170.6875	166.5750	136.5	10	
Tactical Structure	168.0500	168.0500	131.8	1	
A/G Primary	166.9500	166.9500		12	
A/G Secondary					
Prepared by (Resource Unit Leader)		Approved by (Planning Section Chief)		Date	Time
Clint Kolarich/Justin Query <i>Clint Kolarich</i>		Paul Fieldhouse <i>Paul Fieldhouse</i>		August 20, 2015	2100

# ASSIGNMENT LIST

1. Branch

Lolo 2

2. Division/Group

Alpha(2 of 2)

3. Incident Name

Clearwater Complex

4. Operational Period

Date: 08/21/2015

Time: 0600 – 2000 PST

## 5. Operations Personnel

Operations Chief

Bob Lippincott/Brent Olson  
Walt Tomascak/Mark Goeller

Division/Group Supervisor

Trevor Papenfuss

Branch Director

Steve Creech/Scott Schrenk(T)

Air Operations Director

Dennis Morton

## 6. Resources Assigned This Period

Strike Team/Task Force/ Resource Designator	Last Shift	Leader	No. Pers.	Trans. Needed	Drop Off PT./Time	Pick Up PT./Time
E-14 DOZ2 Bonnalie	8/26	Adam Alan	2	NO	Caribel Spk 0600	Caribel Spk 2000
E-9 SKG3 Bonnalie	8/25	Jason Duggon	2	NO	Caribel Spk 0600	Caribel Spk 2000
E-2 WTS2 Keatts Ranch	8/25	Gary Wikum	1	NO	Caribel Spk 0600	Caribel Spk 2000
WTS2 Larry Lyons	8/26	Tom Roy	1	NO	Caribel Spk 0600	Caribel Spk 2000
O-118 Fall Module Whitehorse	8/28	Keith Brandemihl	2	NO	Caribel Spk 0600	Caribel Spk 2000
TFLD	9/2	Robbie Engelhart	1	NO	Caribel Spk 0600	Caribel Spk 2000
HEQB	8/24	Josh Eastman	1	NO	Caribel Spk 0600	Caribel Spk 2000
READ	8/26	Larry Geffre	1	NO	Caribel Spk 0600	Caribel Spk 2000
SOF1	8/27	JD Dombrowske	1	NO	Caribel Spk 0600	Caribel Spk 2000
MEDIC 1	8/27	Armistead/Sanders	2	NO	Caribel Spk 0600	Caribel Spk 2000

## 7. Control Operations

- Assess structures and implement structure protection as needed.
- Hold and secure mechanical line south of Lolo Creek.
- Patrol and mop up all other control lines in the division.

## 8. Special Instructions

- Prioritization of all control or containment actions taken during the operational period in this division will be at the discretion of the DIVS. Actions may have to be taken by the DIVS that are not enumerated in today's IAP. These actions would be a result of a significant change in actual or expected fire behavior over and above that anticipated at the time the IAP was prepared. These actions will be coordinated with and approved by the OSC whenever possible.
- Lewiston Ambulance will patrol east side of river. Contact resource through ICP Communications via local command channel.

## 9. Division/Group Communication Summary

Function	Frequency - RX	Frequency - TX	Tone	Channel
Command RPT	170.6875	166.5750	136.5	10
Tactical Structure	168.0500	168.0500	131.8	1
A/G Primary	166.9500	166.9500		12
A/G Secondary				
Prepared by (Resource Unit Leader) Clint Kolarich/Justin Query <i>Christ R. Kolarich</i>	Approved by (Planning Section Chief) Paul Fieldhouse <i>Paul Fieldhouse</i>		Date August 20, 2015	Time 2100



ASSIGNMENT LIST			1. Branch			2. Division/Group			
			Lolo 2			Foxtrot			
3. Incident Name			4. Operational Period			Time: 0600 – 2000 PST			
Clearwater Complex			Date: 08/21/2015						
5. Operations Personnel									
Operations Chief	Bob Lippincott/Brent Olson Walt Tomascak/Mark Goeller		Division/Group Supervisor		Travis Pfister				
Branch Director	Steve Creech/Scott Schrenk(T)		Air Operations Director		Dennis Morton				
6. Resources Assigned This Period									
Strike Team/Task Force/ Resource Designator	Last Shift	Leader	No. Pers.	Trans. Needed	Drop Off PT./Time	Pick Up PT./Time			
C-30 HC21 Minnesota 7	8/22	Bland/Lang(t)	19	NO	Caribel Spk 0600	Caribel Spk 2000			
C-7 HC2 Nez Perce	8/25	Albert Penny	19	NO	Caribel Spk 0600	Caribel Spk 2000			
E-55 ENG6 Whitehorse Forestry	8/25	Jason McGaughy	3	NO	Caribel Spk 0600	Caribel Spk 0600			
E-61 ENG6 Flatrock Contracting	8/25	Cody Blair	3	NO	Caribel Spk 0600	Caribel Spk 0600			
E-21 DOZ2 Cook and Sons	8/26	Dustin Cornett	1	NO	Caribel Spk 0600	Caribel Spk 2000			
E-12 SKG3 Timber Trail Spur	8/26	Jeff Holliday	1	NO	Caribel Spk 0600	Caribel Spk 2000			
E-128 SKG2 Equipment Technologies	8/28	Justin Vanastrand	1	NO	Caribel Spk 0600	Caribel Spk 2000			
E-91 WTS2 Northwest Mgmt.	8/26	David Crossley	2	NO	Caribel Spk 0600	Caribel Spk 2000			
O-117 Fall Mod Timber Trail & Spur	8/28	Chitwood/Litz	2	NO	Caribel Spk 0600	Caribel Spk 2000			
TFLD	8/22	Nick Hasty(T)	1	NO	Caribel Spk 0600	Caribel Spk 2000			
SOF1	8/27	JD Dombrovsk	1	NO	Caribel Spk 0600	Caribel Spk 2000			
MEDIC 6	8/31	Johnson/Bell	2	NO	Caribel Spk 0600	Caribel Spk 2000			
7. Control Operations									
<ul style="list-style-type: none"> <li>Assess structures and implement structure protection as needed.</li> <li>Hold and secure direct line and cold trail where possible from Caribel Spike north to Lolo Creek.</li> <li>Hold and secure direct line and cold trail where possible from Caribel Spike east along the Caribel Road to the Foxtrot/Romeo break.</li> <li>Look for opportunities to tie fire off into Lolo Creek.</li> </ul>									
8. Special Instructions									
<ul style="list-style-type: none"> <li>Prioritization of all control or containment actions taken during the operational period in this division will be at the discretion of the DIVS. Actions may have to be taken by the DIVS that are not enumerated in today's IAP. These actions would be a result of a significant change in actual or expected fire behavior over and above that anticipated at the time the IAP was prepared. These actions will be coordinated with and approved by the OSC whenever possible.</li> <li>Lewiston Ambulance will patrol east side of river. Contact resource through ICP Communications via local command channel.</li> </ul>									
9. Division/Group Communication Summary									
Function	Frequency - RX	Frequency - TX	Tone	Channel	Comments				
Command RPT	168.0750	170.4250	131.8	8					
Tactical Structure	168.6000	168.6000	131.8	3					
A/G Primary	168.3750	168.3750		13					
A/G Secondary									
Prepared by (Resource Unit Leader)			Approved by (Planning Section Chief)			Date		Time	
Clint Kolarich/Justin Query <i>Clint P. Kolarich</i>			Paul Fieldhouse <i>Paul Fieldhouse</i>			August 20, 2015		2100	

ASSIGNMENT LIST			1. Branch		2. Division/Group		
			Lolo 2		Romeo		
3. Incident Name			4. Operational Period				
Clearwater Complex			Date: 08/21/2015		Time: 0600 – 2000 PST		
5. Operations Personnel							
Operations Chief	Bob Lippincott/Brent Olson Walt Tomascak/Mark Goeller		Division/Group Supervisor		Marvin Matheson/Willie Knudsen (T)		
Branch Director	Steve Creech/Scott Schrenk(T)		Air Operations Director		Dennis Morton		
6. Resources Assigned This Period							
Strike Team/Task Force/ Resource Designator	Last Shift	Leader	No. Pers.	Trans. Needed	Drop Off PT./Time	Pick Up PT./Time	
C-2 HC1 Lewis & Clark	8/24	Matt Holstrom	20	NO	Romeo Spk 0600	Romeo Spk 2000	
C-8 HC2 SICI #39	8/26	Christopher Sarver	21	NO	Romeo Spk 0600	Romeo Spk 2000	
E-23 ENG4 DLR – E4218	8/27	Terry Williams	5	NO	Romeo Spk 0600	Romeo Spk 2000	
E-4 ENG6 Troy	8/26	Dan Hokanson	3	NO	Romeo Spk 0600	Romeo Spk 2000	
E-5 ENG6 Troy	8/26	Hohn Lautenslauger	3	NO	Romeo Spk 0600	Romeo Spk 2000	
E-27 ENG6 Peanut Pie – E54024	8/27	Roger Hawthorne	3	NO	Romeo Spk 0600	Romeo Spk 2000	
E-29 ENG6 Peanut Pie – C83930	8/27	James Maher	3	NO	Romeo Spk 0600	Romeo Spk 2000	
E-13 DOZ2 Bonnalie	8/25	Bonnalie	3	NO	Romeo Spk 0600	Romeo Spk 2000	
E-78 SKG3 Quick Response F & E	8/25	Bryon Vosberg	2	NO	Romeo Spk 0600	Romeo Spk 2000	
E-92 WTS2 Mark Swanson Logging	9/2	Joe Cook	1	NO	Romeo Spk 0600	Romeo Spk 2000	
O-115 Fall Module Brothers Fire	8/27	Joe Hernandez	2	NO	Romeo Spk 0600	Romeo Spk 2000	
HEQB	8/28	Cindy Leuth	1	NO	Romeo Spk 0600	Romeo Spk 2000	
SOFR	8/29	William Mayer(T)	2	NO	Romeo Spk 0600	Romeo Spk 2000	
Medic 3		Lewis/Garcia	2	NO	Romeo Spk 0600	Romeo Spk 2000	
7. Control Operations							
<ul style="list-style-type: none"> <li>Assess structures and implement structure protection as needed.</li> <li>Keep fire west of Tom Taha Creek.</li> <li>Keep fire north of Caribel Road.</li> <li>Hold and secure all control lines and work towards 1 chain of mop up.</li> </ul>							
8. Special Instructions							
<ul style="list-style-type: none"> <li>Prioritization of all control or containment actions taken during the operational period in this division will be at the discretion of the DIVS. Actions may have to be taken by the DIVS that are not enumerated in today's IAP. These actions would be a result of a significant change in actual or expected fire behavior over and above that anticipated at the time the IAP was prepared. These actions will be coordinated with and approved by the OSC whenever possible.</li> <li>Lewiston Ambulance will patrol east side of river. Contact resource through ICP Communications via local command channel.</li> </ul>							
9. Division/Group Communication Summary							
Function	Frequency - RX	Frequency - TX	Tone	Channel	Comments		
Command RPT	168.0750	170.4250	131.8	8			
Tactical Structure	166.7250	166.7250	131.8	4			
A/G Primary	168.3750	168.3750		13			
A/G Secondary							
Prepared by (Resource Unit Leader)			Approved by (Planning Section Chief)		Date	Time	
Clint Kolarich/Justin Query <i>Clint Kolarich</i>			Paul Fieldhouse <i>Paul Fieldhouse</i>		August 20, 2015	2100	

ASSIGNMENT LIST				1. Branch		2. Division/Group	
				Lolo 2		Tango(1 of 2)	
3. Incident Name				4. Operational Period			
Clearwater Complex				Date: 08/21/2015		Time: 0600 - 2000 PST	
5. Operations Personnel							
Operations Chief		Bob Lippincott/Brent Olson Walt Tomascak/Mark Goeller		Division/Group Supervisor		Drew Daily	
Branch Director		Steve Creech/Scott Schrenk(T)		Air Operations Director		Dennis Morton	
6. Resources Assigned This Period							
Strike Team/Task Force/ Resource Designator	Last Shift	Leader	No. Pers.	Trans. Needed	Drop Off PT./Time	Pick Up PT./Time	
C-3 HC1 Pike	8/26	John Albright	21	NO	DP-305 0600	DP-305 2000	
C-26 HC1 Navajo	8/21	Van Smith	19	NO	DP-305 0600	DP-305 2000	
C-29 HC2I Wisconsin 6	8/23	Lloyd Pete	20	NO	DP-305 0600	DP-305 2000	
C-24 HC2 Nondalton #1	8/31	Billy Treefon Jr	20	NO	DP-305 0600	DP-305 2000	
E-102 ENG4 TMT Fire Suppression	8/28	Tom Tymon	3	NO	DP-305 0600	DP-305 2000	
E-2 ENG6 Rocky Mtn. Fire & Timber	8/26	Brian Cahoon	3	NO	DP-305 0600	DP-305 2000	
E-48 ENG6		Will Cartin	3	NO	DP-305 0600	DP-305 2000	
E-57 ENG6 Rockway Construction	8/25	Mitchell Hicks	3	NO	DP-305 0600	DP-305 2000	
E-107 ENG6 Sun City West Brush 103	8/29	Matt Lohn	3	NO	DP-305 0600	DP-305 2000	
E-108 ENG6 AZ-PTP	8/30	Kenny Meyers	2	NO	DP-305 0600	DP-305 2000	
E-295 ENG6 BLM 1602	8/2	Derek Stratton/Wade Hendricks (T)	4	NO	DP-305 0600	DP-305 2000	
7. Control Operations							
<ul style="list-style-type: none"> <li>Continue to construct direct hand line, mop-up as appropriate, and implement structure protection on repeater site.</li> <li>Construct control line from Beaverslide to Caribel.</li> <li>Improve structure protection in Shenandoah subdivision.</li> <li>Continue line construction from Kidder Road to Church Canyon.</li> <li>Scout for line construction opportunities from Church Canyon to Kamiah.</li> </ul>							
8. Special Instructions							
<ul style="list-style-type: none"> <li>Prioritization of all control or containment actions taken during the operational period in this division will be at the discretion of the DIVS. Actions may have to be taken by the DIVS that are not enumerated in today's IAP. These actions would be a result of a significant change in actual or expected fire behavior over and above that anticipated at the time the IAP was prepared. These actions will be coordinated with and approved by the OSC whenever possible.</li> <li>Lewiston Ambulance will patrol east side of river. Contact resource through ICP Communications via local command channel.</li> </ul>							
9. Division/Group Communication Summary							
Function	Frequency - RX	Frequency - TX	Tone	Channel	Comments		
Command RPT	168.0750	170.4250	131.8	8			
Tactical Structure	166.7750	166.7750	131.8	5			
A/G Primary	168.3750	168.3750		13			
A/G Secondary							
Prepared by (Resource Unit Leader)		Approved by (Planning Section Chief)		Date		Time	
Clint Kolarich/Justin Query <i>Clint Kolarich</i>		Paul Fieldhouse <i>Paul Fieldhouse</i>		August 20, 2015		2100	

# ASSIGNMENT LIST

1. Branch

Lolo 2

2. Division/Group

Tango(2 of 2)

3. Incident Name

Clearwater Complex

4. Operational Period

Date: 08/21/2015

Time: 0600 – 2000 PST

## 5. Operations Personnel

Operations Chief	Bob Lippincott/Brent Olson Wait Tomascak/Mark Goeller	Division/Group Supervisor	Drew Daily
Branch Director	Steve Creech/Scott Schrenk(T)	Air Operations Director	Dennis Morton

## 6. Resources Assigned This Period

Strike Team/Task Force/ Resource Designator	Last Shift	Leader	No. Pers.	Trans. Needed	Drop Off PT./Time	Pick Up PT./Time
E-132 DOZ2 Monture Ent.	8/28	Tom Ide	1	NO	DP-305 0600	DP-305 2000
E-38 WTS2 Lyons	8/24	Larry Lyons	1	NO	DP-305 0600	DP-305 2000
E-157 WTS2 Billingsley Trucking	8/28	Stan Billingsley	1	NO	DP-305 0600	DP-305 2000
E-204 WTS2 Rocky Mtn. Agg	8/30	Pete Ehman	1	NO	DP-305 0600	DP-305 2000
E-252 WTS2 Jared Lewis Trucking	8/31	Robert Arvish	1	NO	DP-305 0600	DP-305 2000
E-76 PTS Pumper Cat Spirit of 76	8/24	Brian Palmer	3	NO	DP-305 0600	DP-305 2000
O-334 Fall Module	8/26	Brad Frost	2	NO	DP-305 0600	DP-305 2000
O-341 Fall Module	8/26	Stevenson/Shively	2	NO	DP-305 0600	DP-305 2000
HEQB	8/24	Jonathan Luhnaw	1	NO	DP-305 0600	DP-305 2000
TFLD	8/27	Jamie Miller	1	NO	DP-305 0600	DP-305 2000
TFLD	9/3	Tommy Fisher	1	NO	DP-305 0600	DP-305 2000
SOFR	8/29	William Mayer(T)	2	NO	DP-305 0600	DP-305 2000
MEDIC 10	8/29	Carson/Helena	2	NO	DP-305 0600	DP-305 2000

## 7. Control Operations

- Continue to construct direct hand line, mop-up as appropriate, and implement structure protection on repeater site.
- Construct control line from Beaverslide to Caribel.
- Improve structure protection in Shenandoah subdivision.
- Continue line construction from Kidder Road to Church Canyon.
- Scout for line construction opportunities from Church Canyon to Kamiah.

## 8. Special Instructions

- Prioritization of all control or containment actions taken during the operational period in this division will be at the discretion of the DIVS. Actions may have to be taken by the DIVS that are not enumerated in today's IAP. These actions would be a result of a significant change in actual or expected fire behavior over and above that anticipated at the time the IAP was prepared. These actions will be coordinated with and approved by the OSC whenever possible.
- Lewiston Ambulance will patrol east side of river. Contact resource through ICP Communications via local command channel.

## 9. Division/Group Communication Summary

Function	Frequency - RX	Frequency - TX	Tone	Channel	Comments
Command RPT	168.0750	170.4250	131.8	8	
Tactical Structure	166.7750	166.7750	131.8	5	
A/G Primary	168.3750	168.3750		13	
A/G Secondary					

Prepared by (Resource Unit Leader)

Clint Kolarich/Justin Query

*Clint Kolarich*

Approved by (Planning Section Chief)

Paul Fieldhouse

*Paul Fieldhouse*

Date

August 20, 2015

Time

2100

# ASSIGNMENT LIST

1. Branch

**Carrot Ridge**

2. Division/Group

**Echo**

3. Incident Name

**Clearwater Complex**

4. Operational Period

Date: 08/21/2015

Time: 0600 – 2000 PST

## 5. Operations Personnel

Operations Chief	Bob Lippincott/Brent Olson Walt Tomascak/Mark Goeller	Division/Group Supervisor	Leroy Holguin
Branch Director	Darrell Willis	Air Operations Director	Dennis Morton

## 6. Resources Assigned This Period

Strike Team/Task Force/ Resource Designator	Last Shift	Leader	No. Pers.	Trans. Needed	Drop Off PT./Time	Pick Up PT./Time
C-27 HC1 San Juan	8/25	Jay Godson	20	NO	Fraser Spk 0600	Fraser Spk 2000
C-22 HC2 Chevak #2	8/31	Richard Pequeno	20	NO	Fraser Spk 0600	Fraser Spk 2000
C-39 HC2 Ontario C-002	9/3	Amanda Kaczmarek	21	NO	Fraser Spk 0600	Fraser Spk 2000
E-109 ENG6 White Mountain Apache Fire	8/29	Darren Chimoni	3	NO	Fraser Spk 0600	Fraser Spk 2000
E-113 ENG6 #651	8/29	Brandon Range	3	NO	Fraser Spk 0600	Fraser Spk 2000
E-293 ENG6 #671	9/2	Chris Toole	3	NO	Fraser Spk 0600	Fraser Spk 2000
E-11 SKG2 Flanagan Quality Const.	8/26	Earl Flanagan	1	NO	Fraser Spk 0600	Fraser Spk 2000
E-28 WTS3 Raven Fire	8/26	Will Gadsby	3	NO	Fraser Spk 0600	Fraser Spk 2000
E-40 WTS2 Smiley Water Source	8/26	Hale	3	NO	Fraser Spk 0600	Fraser Spk 2000
E-96 WTS3 Smiley Water Source	8/27	Lance Raff	1	NO	Fraser Spk 0600	Fraser Spk 2000
E-93 DOZ2 Tom Marek Trucking	8/26	Tom Marek	2	NO	Fraser Spk 0600	Fraser Spk 2000
E-94 DOZ2 Tim Fuller Logging	8/26	Phillip Clark	2	NO	Fraser Spk 0600	Fraser Spk 2000
O-116 Fall Module Brothers Fire	8/27	Ekstedt/Borgmann	2	NO	Fraser Spk 0600	Fraser Spk 2000
TFLD	8/26	Benjamin Thayer	1	NO	Fraser Spk 0600	Fraser Spk 2000
MEDIC 2		Roskam/Richards	2	NO	Fraser Spk 0600	Fraser Spk 2000

## 7. Control Operations

- Assess structures and implement structure protection as needed.
- Be prepared to fire indirect line from the Lolo 2 Fire to the Division X-Ray break.
- Patrol direct line in DIV Echo on the Lolo 2 Fire.
- Be prepared to implement the management action points in Division Echo.

## 8. Special Instructions

- Prioritization of all control or containment actions taken during the operational period in this division will be at the discretion of the DIVS. Actions may have to be taken by the DIVS that are not enumerated in today's IAP. These actions would be a result of a significant change in actual or expected fire behavior over and above that anticipated at the time the IAP was prepared. These actions will be coordinated with and approved by the OSC whenever possible.
- Lewiston Ambulance will patrol east side of river. Contact resource through ICP Communications via local command channel.

## 9. Division/Group Communication Summary

Function	Frequency - RX	Frequency - TX	Tone	Channel	Comments
Command RPT	170.6875	166.5750	136.5	10	
Tactical Structure	168.2000	168.2000	131.8	2	
A/G Primary	166.8750	166.8750		11	
A/G Secondary					

Prepared by (Resource Unit Leader)

Clint Kolarich/Justin Query *Clint Kolarich*

Approved by (Planning Section Chief)

Paul Fieldhouse *Paul Fieldhouse*

Date

August 20, 2015

Time

2100

# ASSIGNMENT LIST

1. Branch

Carrot Ridge

2. Division/Group

X-Ray

3. Incident Name

Clearwater Complex

4. Operational Period

Date: 08/21/2015

Time: 0600 – 2000 PST

## 5. Operations Personnel

Operations Chief

Bob Lippincott/Brent Olson  
Walt Tomascak/Mark Goeller

Division/Group Supervisor

Ryan Butler/Lance Martin(T)

Branch Director

Darrell Willis

Air Operations Director

Dennis Morton

## 6. Resources Assigned This Period

Strike Team/Task Force/ Resource Designator	Last Shift	Leader	No. Pers.	Trans. Needed	Drop Off PT./Time	Pick Up PT./Time
C-23 HC2 Alakaket	8/31	Henry Moses	20	NO	Fraser Spk 0600	Fraser Spk 2000
E-212 ENG1 Idaho Falls	8/30	Mark Pitcher	4	NO	Fraser Spk 0600	Fraser Spk 2000
E-215 ENG1 Rupert	8/30	Bob Bussmann	4	NO	Fraser Spk 0600	Fraser Spk 2000
E-216 ENG1 Burley	8/30	Casey Harman	4	NO	Fraser Spk 0600	Fraser Spk 2000
E-213 ENG2 Swan Valley RFD	8/30	Travis Crystal	5	NO	Fraser Spk 0600	Fraser Spk 2000
E-214 ENG2 Ammon	8/30	Lex Hightower	3	NO	Fraser Spk 0600	Fraser Spk 2000
E-3 ENG6 Outback Fire Fighting	8/26	Josh Jenquine	3	NO	Fraser Spk 0600	Fraser Spk 2000
E-58 ENG6 Wildfire Rental & Sales	8/25	Marty Lorentz	3	NO	Fraser Spk 0600	Fraser Spk 2000
E-112 ENG6 Timmermann #3	8/29	John Timmermann	3	NO	Fraser Spk 0600	Fraser Spk 2000
E-201 WTS2 Peterson Trucking	8/30	Chris Hanning	1	NO	Fraser Spk 0600	Fraser Spk 2000
E-202 WTS2 Willamette Transport	8/30	Mike Stearns	1	NO	Fraser Spk 0600	Fraser Spk 2000
E-203 WTS2 Moranville Trucking	8/30	Harry Thorning	1	NO	Fraser Spk 0600	Fraser Spk 2000
E-217 WTT2 Tactical Tender	8/30	Dustin Dance	2	NO	Fraser Spk 0600	Fraser Spk 2000
E-95 WTS3 Smith Fire Fighting	8/23	Spence Gardner	1	NO	Fraser Spk 0600	Fraser Spk 2000
TFLD	9/3	Darren Bridges	1	NO	Fraser Spk 0600	Fraser Spk 2000
STEN	8/30	John Tenerowicz	1	NO	Fraser Spk 0600	Fraser Spk 2000
MEDIC 4	8/30	Stoakes/Mitchel	2	NO	Fraser Spk 0600	Fraser Spk 2000

## 7. Control Operations

- Assess structures and implement structure protection as needed.
- Patrol containment line near Greer and Highway 11.
- Patrol Division X-Ray for line improvement needs and take control actions as necessary.
- Identify resources to support Division Echo during wind event.

## 8. Special Instructions

- Prioritization of all control or containment actions taken during the operational period in this division will be at the discretion of the DIVS. Actions may have to be taken by the DIVS that are not enumerated in today's IAP. These actions would be a result of a significant change in actual or expected fire behavior over and above that anticipated at the time the IAP was prepared. These actions will be coordinated with and approved by the OSC whenever possible.
- Lewiston Ambulance will patrol east side of river. Contact resource through ICP Communications via local command channel.

## 9. Division/Group Communication Summary

Function	Frequency - RX	Frequency - TX	Tone	Channel	Comments
Command RPT	170.6875	166.5750	136.5	10	
Tactical Structure	168.6000	168.6000	136.5	7	
A/G Primary	166.8750	166.8750		11	
A/G Secondary					

Prepared by (Resource Unit Leader)

Clint Kolarich/Justin Query

*Clint Kolarich*

Approved by (Planning Section Chief)

Paul Fieldhouse

*Paul Fieldhouse*

Date

August 20, 2015

Time

2100

ASSIGNMENT LIST		1. Branch	2. Division/Group			
		Lawyer 2	Golf /Juliet			
3. Incident Name <b>Clearwater Complex</b>		4. Operational Period Date: 08/21/2015      Time: 0600 – 2000 PST				
5. Operations Personnel						
Operations Chief	Bob Lippincott/Brent Olson Walt Tomascak/Mark Goeller	Taskforce Leader	David Wanderaas			
Branch Director		Air Operations Director	Dennis Morton			
6. Resources Assigned This Period						
Strike Team/Task Force/ Resource Designator	Last Shift	Leader	No. Pers.	Trans. Needed	Drop Off PT./Time	Pick Up PT./Time
E-1 ENG6 RSK Ent.	8/26	Gerald Calflooking	3	NO	DP-30 0600	DP-30 2000
E-36 ENG6 Peanut Pie	8/26	Gene-Paul Matson	3	NO	DP-30 0600	DP-30 2000
E-59 ENG6 Wildfire Rental & Sales	8/25	Gary Palmer	4	NO	DP-30 0600	DP-30 2000
E-54 WTS2 Bowes Tender	8/25	Stan Haller	1	NO	DP-30 0600	DP-30 2000
E-125 EXCA Flash Excavation	8/28	Bill Hazelton	2	NO	DP-30 0600	DP-30 2000
READ	8/25	Larry Geffre	1	NO	DP-30 0600	DP-30 2000
CULS	8/26	Jared Norman	1	NO	DP-30 0600	DP-30 2000
7. Control Operations						
<ul style="list-style-type: none"> <li>Mop up 100 feet inside the fireline within timber areas.</li> <li>Patrol as needed.</li> <li>Be prepared to support IA request.</li> </ul>						
8. Special Instructions						
<ul style="list-style-type: none"> <li>Prioritization of all control or containment actions taken during the operational period in this division will be at the discretion of the DIVS. Actions may have to be taken by the DIVS that are not enumerated in today's IAP. These actions would be a result of a significant change in actual or expected fire behavior over and above that anticipated at the time the IAP was prepared. These actions will be coordinated with and approved by the OSC whenever possible.</li> <li>Lewiston Ambulance will patrol east side of river. Contact resource through ICP Communications via local command channel.</li> </ul>						
9. Division/Group Communication Summary						
Function	Frequency - RX	Frequency - TX	Tone	Channel	Comments	
Command RPT	166.6125	168.4000	136.5	9		
Tactical Structure	166.7250	166.7250	131.8	4		
A/G Primary	167.1250	167.1250		14		
A/G Secondary						
Prepared by (Resource Unit Leader) Clint Kolarich/Justin Query <i>Clint Kolarich</i>		Approved by (Planning Section Chief) Paul Fieldhouse <i>Paul Fieldhouse</i>		Date August 20, 2015	Time 2100	

ASSIGNMENT LIST			1. Branch		2. Division/Group		
3. Incident Name <b>Clearwater Complex</b>			4. Operational Period Date: 08/21/2015		Heavy Equipment Time: 0600 – 2000 PST		
5. Operations Personnel							
Operations Chief	Bob Lippincott/Brent Olson Wait Tomascak/Mark Goeller		Group Supervisor		John Shotzberger		
Branch Director			Air Operations Director		Dennis Morton		
6. Resources Assigned This Period							
Strike Team/Task Force/ Resource Designator	Last Shift	Leader	No. Pers.	Trans. Needed	Drop Off PT./Time	Pick Up PT./Time	
E-63 DOZ2 Stanton Logging	8/25	Darold Stanton	2	NO	Fraser Spk 0600	Fraser Spk 2000	
E-123 Heavy Equipment Taskforce	8/27	Cody Pearson	3	NO	Fraser Spk 0600	Fraser Spk 2000	
Feller Buncher	8/27	Scott Beplate	1	NO	Fraser Spk 0600	Fraser Spk 2000	
Skidder	8/27	Jerry Wilson	1	NO	Fraser Spk 0600	Fraser Spk 2000	
SKG	8/27	Hunter Cloak	1	NO	Fraser Spk 0600	Fraser Spk 2000	
DOZ2	8/27	Skyler Herd	1	NO	Fraser Spk 0600	Fraser Spk 2000	
E-134 EXCA Cook & Sons			1	NO	Fraser Spk 0600	Fraser Spk 2000	
7. Control Operations							
<ul style="list-style-type: none"> <li>Stage at Frasier Spike camp.</li> <li>Respond to requests for support from DIVS.</li> </ul>							
8. Special Instructions							
<ul style="list-style-type: none"> <li>Prioritization of all control or containment actions taken during the operational period in this division will be at the discretion of the DIVS. Actions may have to be taken by the DIVS that are not enumerated in today's IAP. These actions would be a result of a significant change in actual or expected fire behavior over and above that anticipated at the time the IAP was prepared. These actions will be coordinated with and approved by the OSC whenever possible.</li> <li>Lewiston Ambulance will patrol east side of river. Contact resource through ICP Communications via local command channel.</li> </ul>							
9. Division/Group Communication Summary							
Function	Frequency - RX	Frequency - TX	Tone	Channel	Comments		
Command RPT	166.6125	168.4000	136.5	9			
Tactical Structure	168.2500	168.2500	131.8	6			
A/G Primary							
A/G Secondary							
Prepared by (Resource Unit Leader) Clint Kolarich/Justin Query <i>Clint Kolarich</i>		Approved by (Planning Section Chief) Paul Fieldhouse <i>Paul Fieldhouse</i>		Date August 20, 2015	Time 2100		



# ASSIGNMENT LIST

1. Branch

2. Division/Group

Structure

3. Incident Name:

**Clearwater Complex**

4. Operational Period

Date: 08/21/2015

Time: 0600 – 2000 PST

## 5. Operations Personnel

Operations Chief	Bob Lippincott/Brent Olson Walt Tomascak/Mark Goeller	Division/Group Supervisor	Scott Waldron/James Jessop(T)
Branch Director		Air Operations Director	Dennis Morton

## 6. Resources Assigned This Period

Strike Team/Task Force/ Resource Designator	Last Shift	Leader	No. Pers.	Trans. Needed	Drop Off PT./Time	Pick Up PT./Time
E-111 ENG6 Badger Creek Wildfire	8/28	Darci Brown	3	NO	ICP 0600	ICP 2000
E-219 ENG3 Platte Valley	8/31	Tim Logston	3	NO	ICP 0600	ICP 2000
E-28 ENG6 Florence VFD	8/26	Leah Rediske	3	NO	ICP 0600	ICP 2000
E-110 ENG6 Beaver Dam	8/29	Cody Cotton		NO	ICP 0600	ICP 2000
E-115 ENG6 Brush 3	8/29	John Bouwman	3	NO	ICP 0600	ICP 2000
E-153 WTS2 A-1 Fire Service	8/27	Robert Egusquiza	1	NO	ICP 0600	ICP 2000
E-1 DOZ2 Deyo Bros	8/24	Mike Deyo	1	NO	ICP 0600	ICP 2000
E-32 ENG6 NDSFS	8/27	Aaron Bucholz	3	NO	ICP 0600	ICP 2000
E-24 ENG5 Perkins	8/26	Kyle Woodruff	3	NO	ICP 0600	ICP 2000
E-56 ENG6 Hot Spot	8/25	Cathy Palin	3	NO	ICP 0600	ICP 2000
E-291 ENG6 USR 6225	9/3	Dom Marsden	3	NO	ICP 0600	ICP 2000
E-296 ENG6 BLM 5627	8/27	Daniel Probert	4	NO	ICP 0600	ICP 2000
E-53 WTS2 Fleischhauer	8/25	Casey Smith	1	NO	ICP 0600	ICP 2000
E-56 WTS2 Clearwater Tech.		Chuck Weber	3	NO	ICP 0600	ICP 2000

## 7. Control Operations

- Assess structures, including ingress and egress, and implement structure protection as appropriate.
- Be prepared to support structure protection needs during IA.

## 8. Special Instructions

- Prioritization of all control or containment actions taken during the operational period in this division will be at the discretion of the DIVS. Actions may have to be taken by the DIVS that are not enumerated in today's IAP. These actions would be a result of a significant change in actual or expected fire behavior over and above that anticipated at the time the IAP was prepared. These actions will be coordinated with and approved by the OSC whenever possible.
- Lewiston Ambulance will patrol east side of river. Contact resource through ICP Communications via local command channel.

## 9. Division/Group Communication Summary

Function	Frequency - RX	Frequency - TX	Tone	Channel	Comments
Command RPT	166.6125	168.4000	136.5	9	
Tactical Structure	168.2500	168.2500	131.8	6	
A/G Primary					
A/G Secondary					

Prepared by (Resource Unit Leader)

Clint Kolarich/Justin Query *Clint Kolarich*

Approved by (Planning Section Chief)

Paul Fieldhouse *Paul Fieldhouse*

Date

August 20, 2015

Time

2100

ASSIGNMENT LIST			1. Branch		2. Division/Group		
					<b>Night</b>		
3. Incident Name <b>Clearwater Complex</b>			4. Operational Period Date: 08/21-22/2015		Time: 1900-0600 PST		
<b>5. Operations Personnel</b>							
Operations Chief	Bob Lippincott/Brent Olson Walt Tomascak/Mark Goeller		Night Operations Branch Director		Derrick Moore		
Branch Director			Air Operations Director		Dennis Morton		
<b>6. Resources Assigned This Period</b>							
Strike Team/Task Force/ Resource Designator	Last Shift	Leader	No. Pers.	Trans. Needed	Drop Off PT./Time	Pick Up PT./Time	
C-14 HC1 Lolo	8/21	Shaun Zenner	20	NO	ICP 1900	ICP 0600	
C- HC1 Craig			20	NO	ICP 1900	ICP 0600	
E-25 ENG5 Mountain Camel #575	8/27	Leon Vielle	3	NO	ICP 1900	ICP 0600	
E-26 ENG5 Mountain Camel	8/27	Virgil Mad Plume	3	NO	ICP 1900	ICP 0600	
E-7 ENG6 Sean Andrews Fire Serv.	8/25	Sean Andrews	3	NO	ICP 1900	ICP 0600	
E-31 ENG6 Solomon Fire	8/26	Dub Hawley	3	NO	ICP 1900	ICP 0600	
E-155 ENG6 NDF #671	8/27	Andrew Bellairs	4	NO	ICP 1900	ICP 0600	
E-75 ENG6 Big Cedar Fire Service	8/24	Ben Anderberg	3	NO	ICP 1900	ICP 0600	
E-39 WTS2 Forest Industries Res. & Equip	8/25	Casey Green	1	NO	ICP 1900	ICP 0600	
MEDIC 5		Near/Blackmon	2	NO	ICP 1900	ICP 0600	
7. Control Operations							
<ul style="list-style-type: none"> <li>• Provide for structure protection and patrol recent fire impacted areas using information gathered from day shift.</li> <li>• Take direct action around structures as necessary.</li> <li>• Patrol and mop up control line south of Lolo Creek in DIV Alpha where possible.</li> <li>• Patrol division Echo and mop up where necessary.</li> </ul>							
8. Special Instructions							
<ul style="list-style-type: none"> <li>• Prioritization of all control or containment actions taken during the operational period in this division will be at the discretion of the DIVS. Actions may have to be taken by the DIVS that are not enumerated in today's IAP. These actions would be a result of a significant change in actual or expected fire behavior over and above that anticipated at the time the IAP was prepared. These actions will be coordinated with and approved by the OSC whenever possible.</li> </ul>							
9. Division/Group Communication Summary							
Function	Frequency - RX	Frequency - TX	Tone	Channel	Comments		
Command RPT	166.6125	168.4000	136.5	9			
Tactical Structure	168.0500	168.0500	131.8	1			
A/G Primary	166.9500	168.9500		12			
A/G Secondary							
Prepared by (Resource Unit Leader) Clint Kolarich/Justin Query <i>Clint Kolarich</i>		Approved by (Planning Section Chief) Paul Fieldhouse <i>Paul Fieldhouse</i>		Date August 20, 2015	Time 2100		

<b>1. INCIDENT NAME:</b> Clearwater Complex		<b>START TIME:</b> 0900	<b>END TIME:</b> 2000	<b>SUNRISE:</b> 0551	<b>SUNSET:</b> 1943
<b>2. OPS PERIOD DATE:</b> 8/21/2015					
<b>3. REMARKS (Safety Notes, Hazards, Air Operations Special Equipment, etc.):</b> Do appropriate level of risk management for all assigned missions—Assess mission complexity and the Benefit/Risk of the mission. SMOKE: Ensure visibility is adequate to safely conduct flight operations; ensure safe vertical & horizontal separation between aircraft; Call in and out of the dips.					

Aviation Conference call 888-844-9904 passcode 4003997#

PERSONNEL	NAME	PHONE #	7. FREQUENCIES	AM	FM	8. FIXED-WING Avail/ Type/ Make-Model/ N#/ Base
AOBD	Dennis A. Morton	406.660.2318	Clearwater Flight Follow	120.275		AIRTANKERS- Order through Air Attack or Ops
ASGS	Brian Campbell	541.420.4586	Carrot Ridge A/G		166.875	LEAD PLANES- Order through Air Attack or Ops
ASGS(T)	Tyler Brothers	406.544.1948	Lolo A/G 1 DIV A, E		166.950	ATB PHONE & FAX #- 208.983.1964
ATGS	John Pollard	208.661.7706	Lolo A/G 2 DIV F, R, T		168.375	
ATGS	Ken Wabaunsee	406.370.5896	Lawyer 2 A/G DIV J, G		167.125	ATGS AIRCRAFT - 8WY Haverstick, 01HD Wabaunsee, 9CS Pollard, 2WS Campbell
ATGS	Erik Haberstick	435.881.5715	TOLC			
ATGS	Craig Campbell	406.570.4272	DECK		163.100	E-mail costs to <a href="mailto:clearwaterfinance2015@gmail.com">clearwaterfinance2015@gmail.com</a> Please separate costs if flying fires other than Clearwater Complex!
HEB2(T)	Travis Stanfill	541.390.1792				Dipsites: Jungert Dip 46 15.764 X 115 56.725 Erickson Dip 46 18.42 X 116 04.48
ATGS			Clearwater Rotorwing Clearwater Fixedwing	132.275 119.075		Deyo Reservoir 46 21.974 X 116 0.551 River Dip 46 11.4 X 116 00.7

**9. HELICOPTERS (Use Additional Sheets as Necessary)**

FAA N#	TY	MAKE/ MODEL	BASE	AVAIL	START	REMARKS	FAA N#	TY	MAKE/ MODEL	BASE	AVAIL	START	REMARKS
HT-732	1	S-64E	0S5	0900	0800	Broke 8/21							
117DR	2	UH-1H	0S5	0900	0800	Restricted Buckets							
212HP	2	Bell 212HP	0S5	0900	0800	Recon/Buckets							
3SG	2	UH-1H	0S5	0900	0800	Restricted Buckets							
405LP	3	Bell 206L4	0S5	TBD	TBD	Recon							

INCIDENT RADIO COMMUNICATIONS PLAN		1. Incident Name <b>Clearwater Complex</b>		2. Date Time Prepared <b>8/20/2015</b>		3. Operational Period Date/Time <b>8/21/2015 0600-2200</b>		
Radio Type	CH #	Function	Frequency	Tone/NAC	Mode	TGID	Assignment	Remarks
	1	Tactical 1	RX: 168.0500 TX: 168.0500	131.8 131.8	N		DIV A	
	2	Tactical 2	RX: 168.2000 TX: 168.2000	131.8 131.8	N		DIVE	
	3	Tactical 3	RX: 168.6000 TX: 168.6000	131.8 131.8	N		DIV F	
	4	Tactical 4	RX: 168.7250 TX: 168.7250	131.8 131.8	N		DIV R / J / G	
	5	Tactical 5	RX: 168.7750 TX: 168.7750	131.8 131.8	N		DIV T	
	6	Tactical 6	RX: 168.2500 TX: 168.2500	131.8 131.8	N		STRUCTURE / STAGING	
	7	Tactical 7	RX: 168.6000 TX: 168.6000	136.5 136.5	N		DIV X	
	8	CMD 1	RX: 170.4250 TX: 170.4250	131.8 131.8	N		LOLO	RPT LOCATION - WOODRAT
	9	CMD 7	RX: 166.8125 TX: 168.4000	136.5 136.5	N		LAWYER 2	RPT LOCATION - DOTY HILL
	10	CMD 8	RX: 170.8875 TX: 168.5750	136.5 136.5	N		LOLO	RPT LOCATION - PEFFERCORN
	11	A/G CARROT	RX: 168.8750 TX: 168.8750		N		CARROT RIDGE	
	12	A/G LOLO 1	RX: 166.9500 TX: 166.9500		N		DIV A / E	
	13	A/G LOLO 2	RX: 168.3750 TX: 167.1250		N		DIV F / R / T	
	14	A/G LAWYER 2	RX: 167.1250 TX: 167.1250		N		DIV J / G	
	15	EMS 2	RX: 155.2800 TX: 155.2800	156.7	N			CONTACT MEDIVAC
	16	Air Guard	RX: 168.0250 TX: 168.0250	110.9	N		AIR GUARD	EMERGENCY USE

4. Basic Radio Channel Utilization  
 Mode: W= Wideband, N= Narrowband, D= Digital, M= Mixed

ON CMD CHNLS, TRANSMIT / PAUSE / TALK  
 CG-SO KNDR, COURTERCLOCKWISE UNTIL CLICK ON ALL CHNLS

*Justin Sene*

5. Prepared by (Communications Unit)  
**Dustin Sene, COML 406-581-9816**

Note: This is not a standard NWCG ICS205 Form

# MEDICAL PLAN

<b>1. Incident/Project Name</b>		<b>2. Operational Period</b>				
<b>Clearwater Complex</b>		<b>08/21/2015</b>				
<b>3. Ambulance Services</b>						
Name	Complete Address	Phone	Advanced Life Support (ALS)			
			Yes	No		
Kamiah Ambulance	507 Main St., Kamiah, ID	208-937-2447		No		
Kooskia Ambulance	401 Front St., Kooskia, ID	911	Must request			
Grangeville Ambulance	607 West Main St., Grangeville, ID	911	Yes			
Clearwater/Orofino Ambulance	1195 Riverside Ave., Orofino, ID	911				
Lewiston Ambulance	Dedicated to Incident- Staging at Lawyer 2	Command	Yes			
<b>4. Air Ambulance Services</b>						
Name	Phone	Type of Aircraft & Capability				
Life Flight (Lewiston)	1-800-232-0911	Agusta 119/ ALS				
MedStar (Pullman)	1-800-572-3210	ALS				
Grangeville Medical Taskforce	208-983-6800	ALS – EMT and Paramedic staged at Grangeville Airport				
<b>5. Hospitals</b>						
Name	GPS Datum – WGS 84		Travel Time	Phone	Helipad	Level of Care
			Air	Gnd	Yes	No
St. Mary's Hospital 701 Lewiston St. Cottonwood, ID	Lat:	N 46.03.03			■	
	Long:	W 116.21.1				
	VHF:	A/G: 155.280 Hospital Dir: 155.340				
Syringa Hospital 607 West Main St. Grangeville, ID Air access via Idaho County Airport	Lat:	N 45.56.34				■
	Long:	W 116.07.31				
	VHF:	A/G: 155.280 Hospital Dir: 155.340				
Clearwater Hospital 301 Cedar St. Orofino, ID	Lat:	N 46.29.01			■	
	Long:	W 116.15.30				
	VHF:	A/G: 155.280 Hospital Dir: 155.340				
Kamiah Clinic 518 Oak St., Kamiah, ID					■	
Kooskia Clinic 22 N. Main St., Kooskia, ID					■	
St. Joseph Regional Medical Center Lewiston, Idaho	Lat:	N 46.24.58			■	
	Long:	W 117.01.22				
	VHF:	A/G: 155.280 Hospital Dir: 155.340				

6. Division   Branch   Group	Area Location Capability
------------------------------	--------------------------

Branch - Lolo 2 Div. Alpha	EMS Responders & Capability:	Day: Medic 1 --Tyler Armistead, EMT & Jordon Sanders , EMT Night: Medic 5 – Paramedic Paul Near, Zach Blackmon, EMT
	Equipment Available on Scene:	Trauma kit, O2, Spinal Immobilization, Epi
	Medical Emergency Channel:	Command Channel
	ETA for Ambulance to Scene:	
	Air:	30 minutes
	Ground:	20 minutes
	Approved Helispot:	
	Lat:	
Long:		
Branch – Carrot Ridge Div. Echo	EMS Responders & Capability:	Medic 2 -- Paramedic Paige Roskum, Isaac Richards, EMT
	Equipment Available on Scene:	Trauma kit, O2, Spinal Immobilization, Epi
	Medical Emergency Channel:	Command Channel
	ETA for Ambulance to Scene:	
	Air:	

# MEDICAL PLAN

	Ground:	
	Approved Helispot:	
	Lat:	
	Long:	
Branch – Lolo Div. Foxtrot	EMS Responders & Capability:	Medic 6 -- Ryan Bell & Alan Johnson, EMT
	Equipment Available on Scene:	Trauma kit, O2, Spinal Immobilization, Epi
	Medical Emergency Channel:	Command Channel
	ETA for Ambulance to Scene:	
	Air:	
	Ground:	
	Approved Helispot:	
	Lat: Long:	
Branch – Lolo Div. Romeo	EMS Responders & Capability:	Medic 3 – Jimmie Lewis, EMT & Taylor Garcia, EMT
	Equipment Available on Scene:	Trauma kit, O2, Spinal Immobilization, Epi
	Medical Emergency Channel:	Command Channel
	ETA for Ambulance to Scene:	
	Air:	
	Ground:	
	Approved Helispot:	
	Lat: Long:	
Branch – Lolo 2 Div. Tango	EMS Responders & Capability:	Medic 10 - Millie Carson, EMT & Bob Helena, AEMT
	Equipment Available on Scene:	Trauma Kit, O2, Spinal Immobilization, Epi
	Medical Emergency Channel:	Command Channel
	ETA for Ambulance to Scene:	
	Air:	30 minutes
	Ground:	20 minutes
	Approved Helispot:	
	Lat: Long:	
ICP-Medical 4647 Highway 13 Kooskia, ID	EMS Responders & Capability:	Roy Grant, Marilynn Davis EMT
	Equipment Available on Scene:	Trauma kit, O2, AED, Epi
	Medical Emergency Channel:	Command Channel
	ETA for Ambulance to Scene:	
	Air:	30 minutes
	Ground:	15 minutes
	Approved Helispot:	
	Lat: Long:	
Branch – Carrot Ridge Div. X Ray	EMS Responders & Capability:	Medic 4 – Ricky Mitchell, EMT & Glenn Stokes, EMT
	Equipment Available on Scene:	Trauma Kit, O2, Spinal Immobilization, AED, Epi
	Medical Emergency Channel:	Command Channel
	ETA for Ambulance to Scene:	
	Air:	25 minutes
	Ground:	30 minutes
	Approved Helispot:	
	Lat: Long:	
<b>7. Remote Camp Location</b>	<b>Remote Camp Medical Personnel</b>	
Caribel Spike Camp N 46.17.057 W 116.0.113	EMS Responders & Capability:	Medic 6 -- Ryan Bell & Alan Johnson, EMT
	Equipment Available on Scene:	Trauma Kit, O2, Spinal Immobilization, AED, Epi
Frasier Spike Camp N 46.23.291 W 116.2.818	EMS Responders & Capability:	Medic 4 – Ricky Mitchell, EMT & Glenn Stokes, EMT
	Equipment Available on Scene:	Trauma Kit, O2, Spinal Immobilization, AED, Epi
Romeo Spike Camp N 46.15.687 W 115.57.452	EMS Responders & Capability:	Medic 10 - Millie Carson, EMT & Bob Helena, AEMT
	Equipment Available on Scene:	Trauma Kit, O2, Spinal Immobilization, AED, Epi
<b>8. Prepared By (Medical Unit Leader)</b> Roy Grant	<b>9. Date/Time</b> 8/20/2015	<b>10. Reviewed By (Safety Officer)</b> Bob Habeck
		<b>11. Date/Time</b> 8/20/2015

# MEDICAL PLAN

## Medical Incident Report

**FOR ALL MEDICAL EMERGENCIES: IDENTIFY ON SCENE INCIDENT COMMANDER BY NAME AND POSITION AND ANNOUNCE "MEDICAL EMERGENCY" TO INITIATE RESPONSE FROM IMT COMMUNICATIONS/DISPATCH.**

**Use items one through nine to communicate situation to communications/dispatch.**

### 1. CONTACT COMMUNICATIONS/DISPATCH

*Ex: "Communications, Div. Alpha. Stand-by for Priority Medical Incident Report." (If life threatening request designated frequency be cleared for emergency traffic.)*

### 2. INCIDENT STATUS: *Provide incident summary and command structure.*

<b>Nature of injury/illness</b>		<i>Describe the injury (Ex: Broken leg with bleeding)</i>
Incident Name		<i>Geographic Name + "Medical" (Ex: Trout Meadow Medical)</i>
Incident Commander		<i>Name of IC</i>
Patient Care		<i>Name of Care Provider (Ex: EMT Smith)</i>

### 3. INITIAL PATIENT ASSESSMENT: *Complete this section for each patient. This is only a brief, initial assessment. Provide additional patient info after completing this 9 Line Report.*

Number of Patients:	Male / Female	Age:	Weight:
Conscious? <input type="checkbox"/> YES <input type="checkbox"/> <b>NO = MEDEVAC!</b>			
Breathing? <input type="checkbox"/> YES <input type="checkbox"/> <b>NO = MEDEVAC!</b>			
Mechanism of Injury: <i>What caused the injury?</i>			
Lat/Long (Datum WGS84) <i>Ex: N 40° 42.45' x W 123° 03.24'</i>			

### 4. SEVERITY OF EMERGENCY, TRANSPORT PRIORITY

SEVERITY	TRANSPORT PRIORITY
<input type="checkbox"/> <b>URGENT-RED Life threatening injury or illness.</b> <i>Ex: Unconscious, difficulty breathing, bleeding severely, 2° - 3° burns more than 4 palm sizes, heat stroke, disoriented.</i>	Ambulance or MEDEVAC helicopter. Evacuation need is <b>IMMEDIATE.</b>
<input type="checkbox"/> <b>PRIORITY-YELLOW Serious Injury or illness.</b> <i>Ex: Significant trauma, not able to walk, 2° - 3° burns not more than 1-2 palm sizes.</i>	Ambulance or consider air transport if at remote location. Evacuation may be <b>DELAYED.</b>
<input type="checkbox"/> <b>ROUTINE-GREEN</b> Not a life threatening injury or illness. <i>Ex: Sprains, strains, minor heat-related illness.</i>	Non-Emergency. Evacuation considered <b>Routine of Convenience.</b>

### 5. TRANSPORT PLAN:

#### Air Transport: *(Agency Aircraft Preferred)*

<input type="checkbox"/> Helispot	<input type="checkbox"/> Short-haul/Holst	<input type="checkbox"/> Life Flight	<input type="checkbox"/> Other
-----------------------------------	---	--------------------------------------	--------------------------------

#### Ground Transport: *Click here to enter text.*

<input type="checkbox"/> Self-Extract	<input type="checkbox"/> Carry-Out	<input type="checkbox"/> Ambulance	<input type="checkbox"/> Other
---------------------------------------	------------------------------------	------------------------------------	--------------------------------

### 6. ADDITIONAL RESOURCE/EQUIPMENT NEEDS:

<input type="checkbox"/> Paramedic/EMT(s)	<input type="checkbox"/> Crew(s)	<input type="checkbox"/> SKED/Backboard/C-Collar
<input type="checkbox"/> Burn Sheet(s)	<input type="checkbox"/> Oxygen	<input type="checkbox"/> Trauma Bag
<input type="checkbox"/> Medication(s)	<input type="checkbox"/> IV/Fluid(s)	<input type="checkbox"/> Cardiac Monitor/AED
<input type="checkbox"/> Other (i.e. splints, rope rescue, wheeled litter)		

### 7. COMMUNICATIONS:

Function	Channel Name/Number	Receive (Rx)	Tone/NAC *	Transmit (Tx)	Tone/NAC *
<i>Ex: Command</i>	<i>Forest Rpt, Ch. 2</i>	<i>168.3250</i>	<i>110.9</i>	<i>171.4325</i>	<i>110.9</i>
COMMAND					
AIR-TO-GRND					
TACTICAL					

\*(NAC for digital radio system)

### 8. EVACUATION LOCATION:

Lat/Long (Datum WGS84) <i>EX: N 40 42.45' x W 123 03.24'</i>	
Patient's ETA to Evacuation Location:	
Helispot/Extraction Size and Hazards:	

### 9. CONTINGENCY:

**Considerations:** *If primary options fail, what actions can be implemented in conjunction with primary evacuation method? Be thinking ahead...*

**REMEMBER:** Confirm ETA's of resources ordered  
Act according to your level of training  
Be Alert. Keep Calm. Think Clearly. Act Decisively.

# MEDICAL PLAN

## ASSIGNMENT-SPECIFIC MEDICAL EMERGENCY ACTION PLAN Medical Emergency Procedures

### Who Takes Charge?

- DIVS or designated Overhead manages the overall scene and evacuation process.
- Medical personnel and emergency responders manage patients and conduct rescues.
- OPS and IC make command decisions so the emergency can be given full attention and management. They continue to manage ongoing incident operations.

### Response Sequence:

- First, secure the scene and protect responders and patients from further injury.
- Clear the Command channel for "Emergency Traffic only" if this is a critical emergency. If not, inform Communications of non-critical-emergency status and use normal communications.
- Contact closest Medical personnel and DIVS or designated Overhead for response.
- Notify Communications to initiate medical emergency response.

### Assignment-Specific Medical Emergency Action Plan

What are the likely hazards that could cause injuries? What kind of severe injuries?		
Who is the likely in-charge DIVS or overhead for an emergency in your assigned area today? (i.e. "Division Zulu")		
Who are the Medical personnel assigned to your part of the incident? What are their capabilities?		
Other Emergency Responders: fire dept, crash rescue, ambulance?		
Communications: Command channel, Air to Ground, Medical helicopters, local rescue/medical?		
Transportation Methods Available	Ground vehicle, drop point, coordinates, How long?	
	Aircraft I.D, helispot names, coordinates? Hoist capable, internal transport – How long?	
	Other available methods – contingency – How long?	
Most likely workforce for evacuation? How long?		

### Information for Communications

- Describe the nature of injury / illness and current condition.
- Airway or breathing problems? Serious bleeding?
- Is an EMT present or needed? Are Paramedics (Advanced Life Support) needed?
- Specific location of patient (Lat/Long, access route, DP#, helispot)?
- What type of transport is needed? Helicopter medevac, hoist, ambulance or ground transport?
- Name of contact person in charge of the scene.
- Do not use names of patients at any time.
- Medical Emergency Responders confer with Medical Unit Leader and DIVS or designated overhead to determine if this is a critical emergency and what type of transport is needed.

**Medical Incident Report - page 108, 2014 IRPG  
Planning for Medical Emergencies – page 2, 2014 IRPG**





# **HUMAN RESOURCE MESSAGE**

## **CLEARWATER COMPLEX**

Greg Poncin's Incident Management Team

August 21, 2015

### What is Mutual Respect?

Mutual respect can be defined as "the thoughtful concern for others, which recognizes the quality, value, and significance of the people around you".

Do not think you are communicating just because you are talking. Good communication improves relationships and may assist you in practicing Mutual Respect.

Thank you and stay safe.

Reminder: The Clearwater Complex is an alcohol and non-prescription drug free incident.

Dale Tribby  
Human Resource Specialist  
406-951-4429

Jim Homison  
Human Resource Specialist Trainee  
406-868-3566

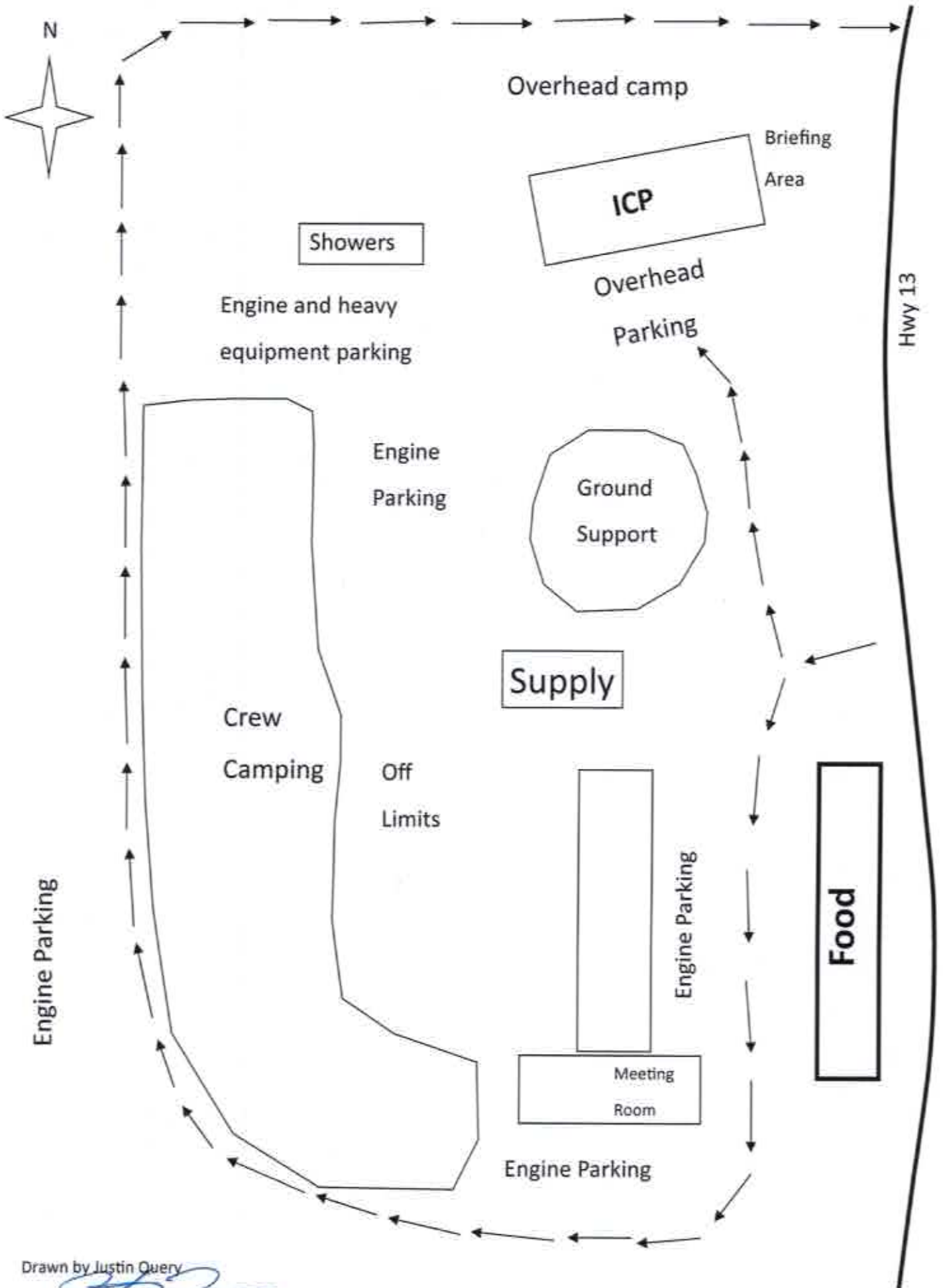
HUMAN RESOURCES OFFICE IS LOCATED IN CLEARWATER HIGH SCHOOL  
ACROSS FROM THE CATERER

# CLEARWATER COMPLEX

## ICP PHONE LIST 8/15/15

(PLEASE ADVISE COMMO OF ANY CHANGES, ADDITIONS OR CORRECTIONS)

Incident Commander / Liaison	208-926-4579
Information	208-926-4293
Call Center	208-926-4589
Operations	208-926-4578
Medical	208-926-0142
Communications	208-926-4229
Finance – Time	208-926-4577
Procurement	208-926-4186
Finance Fax	208-926-4177
Plans	208-926-0940
Check-in / Demob	208-926-4586
Plans Fax	208-926-4177
Situation	208-926-4564
Ordering	208-926-4248 / 208-926-4291
Supply	208-926-4590
Ground Support	208-926-4591

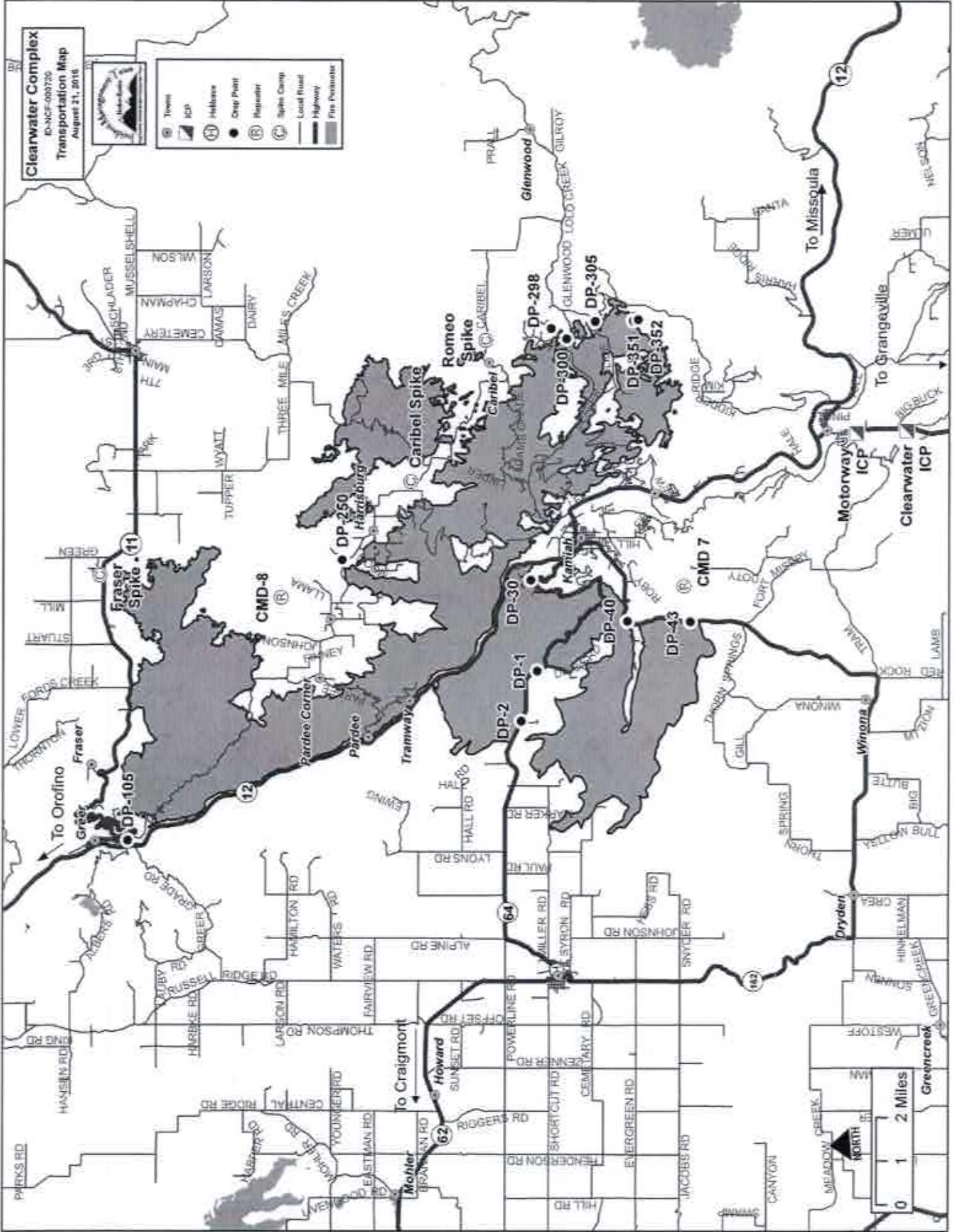


Drawn by Justin Query

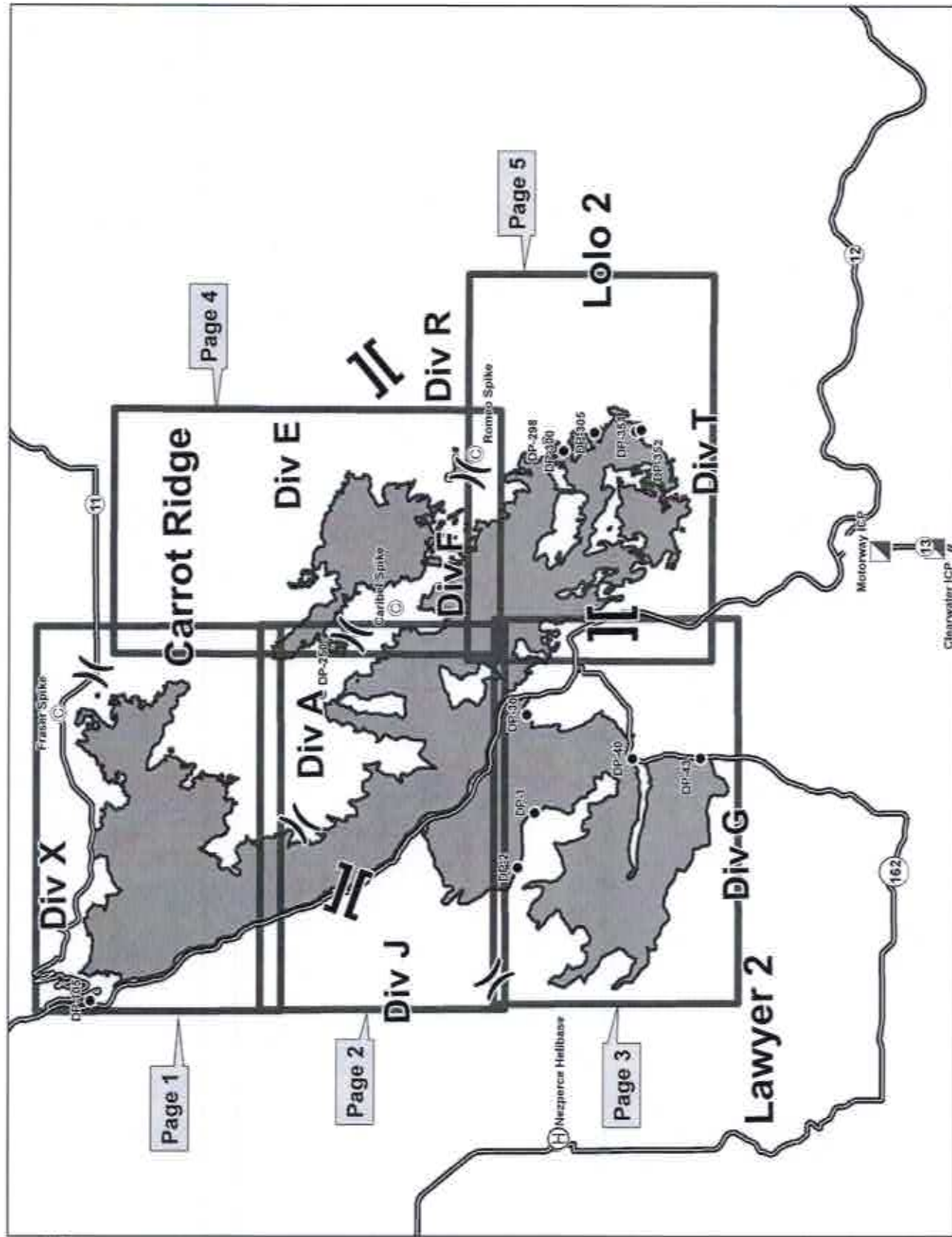
**Clearwater Complex**  
 ID-NCF-000726  
 Transportation Map  
 August 31, 2018



	Town
	ICP
	Habitat
	Camp Print
	Regulator
	Spikes Camp
	Local Road
	Highway
	Fire Perimeter



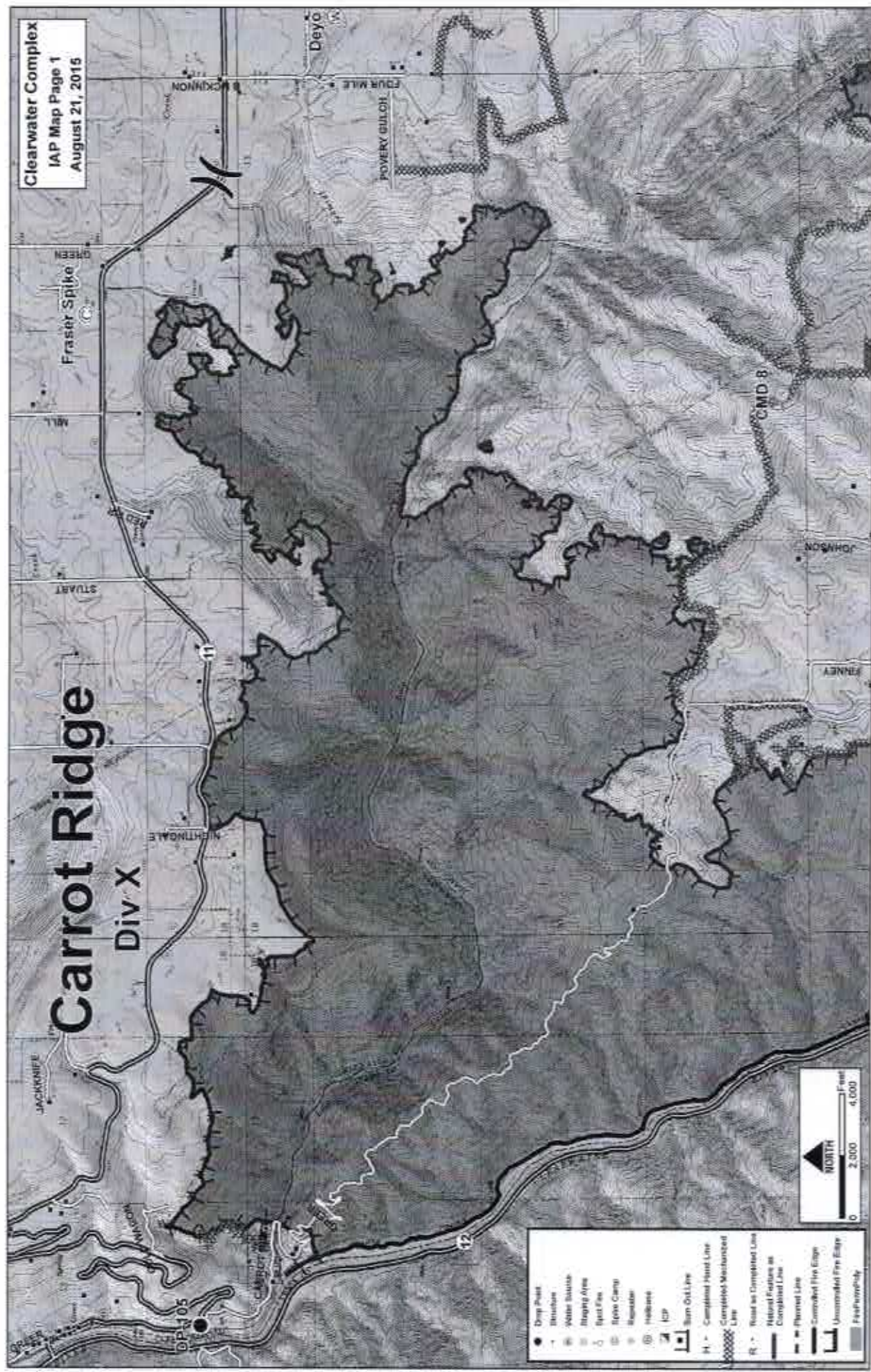
**Clearwater Complex  
IAP Map Index  
August 21, 2015**



Clearwater Complex  
 IAP Map Page 1  
 August 21, 2015

# Carrot Ridge

## Div X



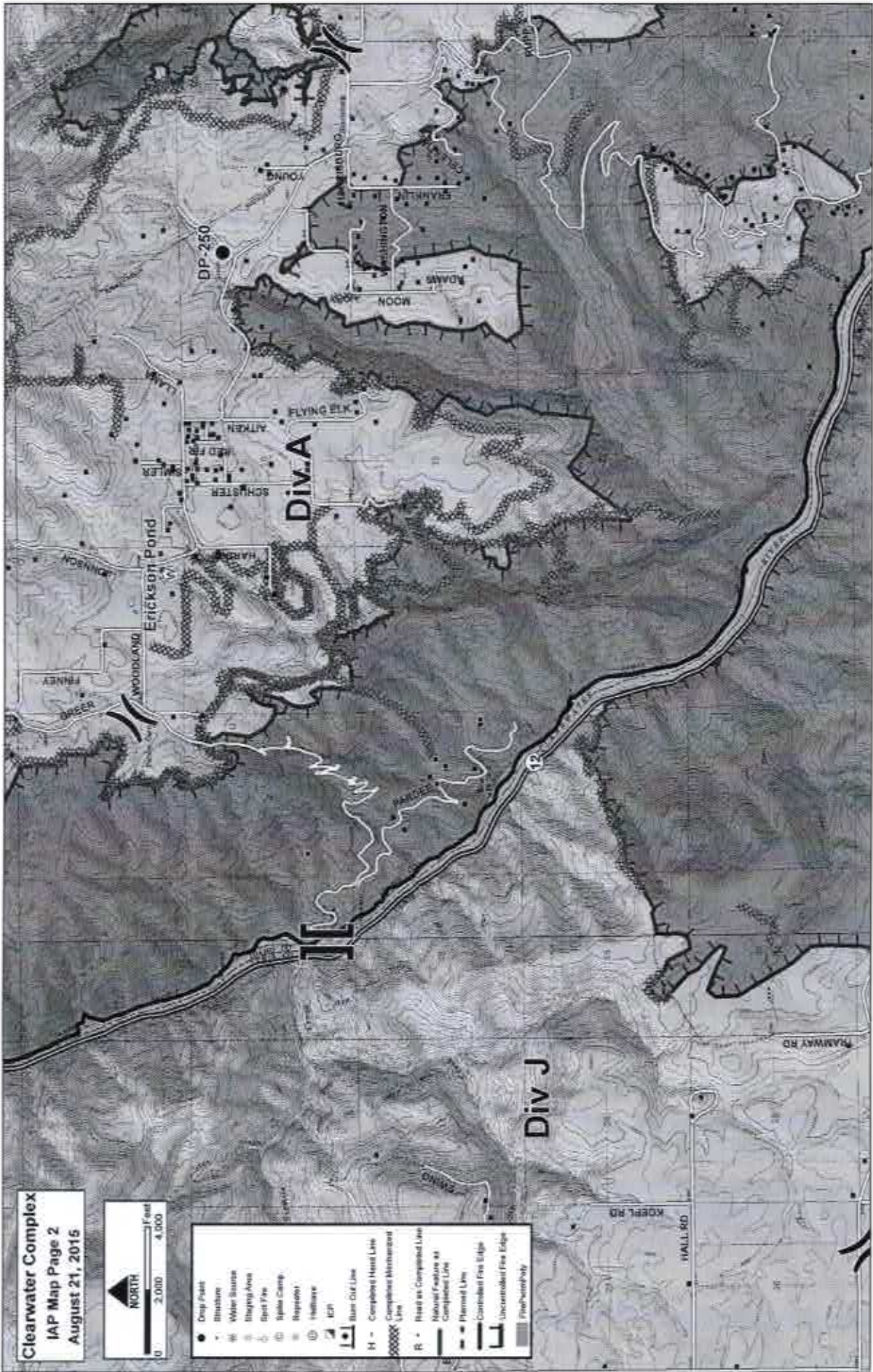
- Drop Point
- Structure
- ▣ Water Basin
- ▣ Staging Area
- Best Fire
- ▣ Stove Camp
- ▣ Ignitator
- ⊙ Helispot
- ▣ ICP
- ▣ Burn Out Line
- Completed Road Line
- Completed Hand Line
- Completed Machinezoned Line
- Road to be Completed Line
- National Features to be Completed Line
- Planned Line
- ▣ Controlled Fire Edge
- ▣ Uncontrolled Fire Edge
- ▣ Firework Only

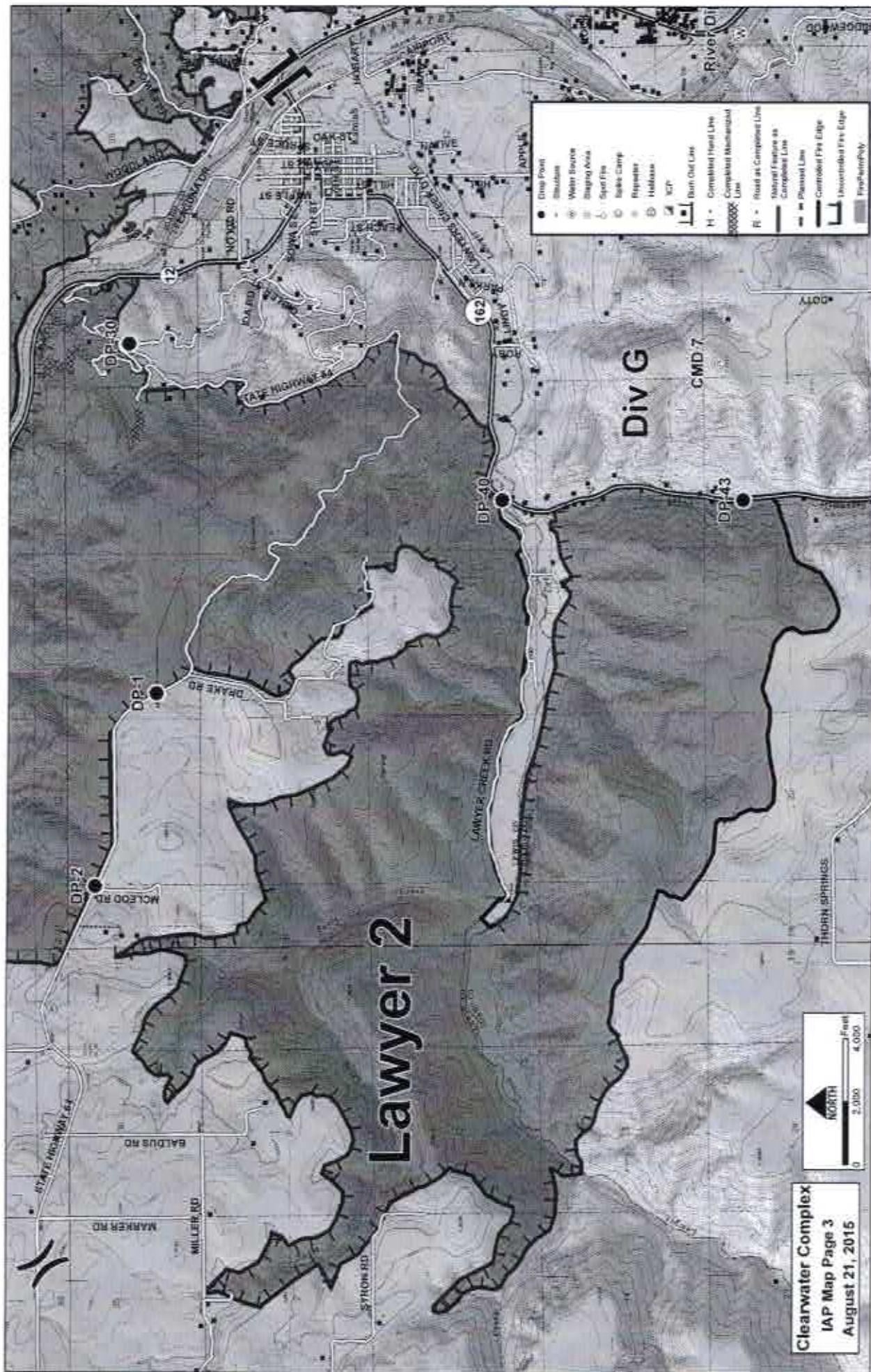


**Clearwater Complex**  
**IAP Map Page 2**  
**August 21, 2015**



	Deep Pit
	Structure
	Water Source
	Staging Area
	Spot Fire
	Spill Camp
	Regolith
	Healthcare
	ICP
	Burn Out Line
	H - Complete Head Line
	Complete Abandonment Line
	R - Head as Completed Line
	Natural Feature as Completion Line
	Planned Line
	Controlled Fire Edge
	Uncontrolled Fire Edge
	Fire/Smokeway





**Clearwater Complex**  
 IAP Map Page 3  
 August 21, 2015

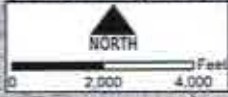


**Lawyer 2**

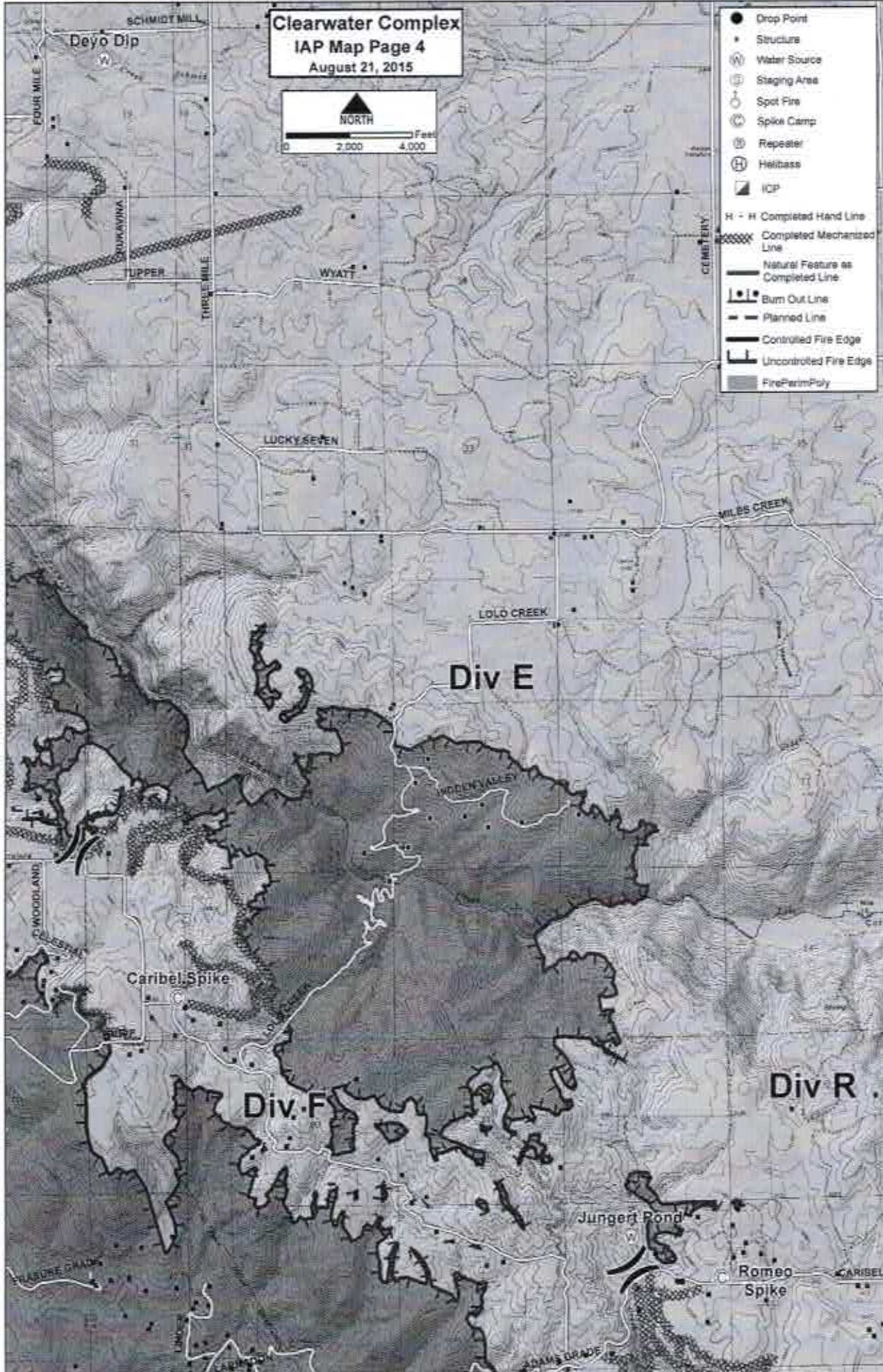
**Div G**



**Clearwater Complex**  
**IAP Map Page 4**  
 August 21, 2015



- Drop Point
- Structure
- W Water Source
- ⊕ Staging Area
- ⊙ Spot Fire
- ⊙ Spike Camp
- ⊕ Repeater
- ⊕ Helibase
- ▣ ICP
- H - H Completed Hand Line
- ⊘ Completed Mechanized Line
- Natural Feature as Completed Line
- ⊕ Burn Out Line
- - - Planned Line
- Controlled Fire Edge
- ⊕ Uncontrolled Fire Edge
- FirePerimPoly





- Drop Point
- Structure
- ⊗ Water Source
- ⊗ Storage Area
- ⊗ Spot Fire
- ⊗ Snake Camp
- ⊗ Repeller
- ⊗ Inhabitant
- ⊗ ICP
- ⊗ Burn Out Line
- ⊗ Completed Hand Line
- ⊗ Completed Mechanical Line
- ⊗ Road as Containment Line
- ⊗ Natural Feature as Containment Line
- ⊗ Planned Line
- ⊗ Controlled Fire Edge
- ⊗ Uncontrolled Fire Edge
- ⊗ Feather/Poly

Lolo 2

DIV T



TIME	MAJOR EVENTS

<b>UNIT LOG</b>	1. Incident Name <b>Clearwater Complex</b>	2. Date Prepared	3. Time Prepared
4. Unit Name/Designators	5. Unit Leader (Name and Position)		6. Operational Period
<b>7. Personnel Roster Assigned</b>			
Name	ICS Position	Home Base	
<b>8. Activity Log</b>			
Time	Major Events		
9. Prepared by (Name and Position)			