

115°25'0"W 115°24'30"W 115°24'0"W 115°23'30"W 115°23'0"W 115°22'30"W 115°22'0"W 115°21'30"W 115°21'0"W 115°20'30"W 115°20'0"W 115°19'30"W 115°19'0"W 115°18'30"W 115°18'0"W 115°17'30"W 115°17'0"W 115°16'30"W

Motorway Complex
Slide Branch
ID-NCF-000859
IAP Map
28 AUGUST 2015
Map Page 10



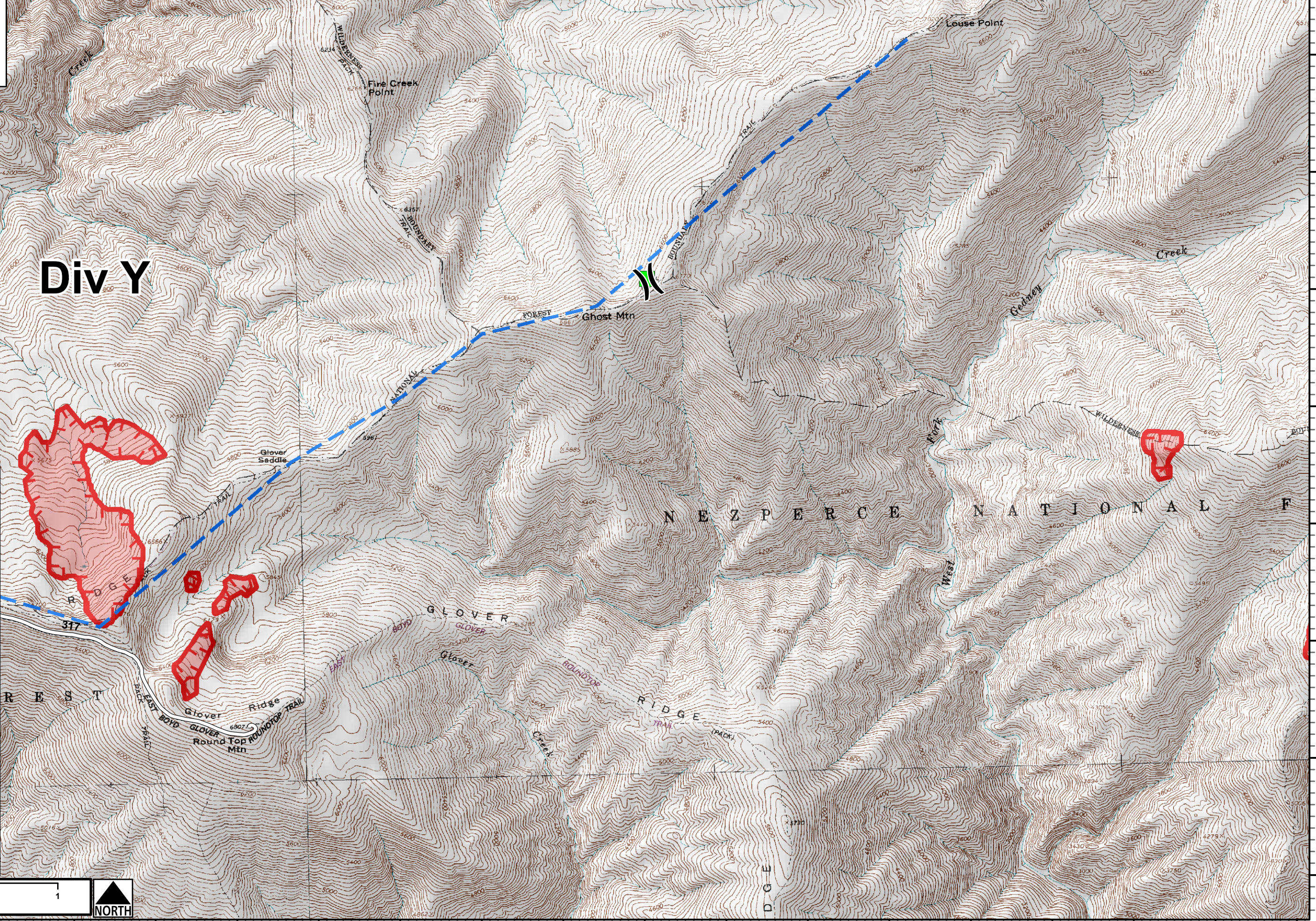
46°10'30"N
46°10'0"N
46°9'30"N
46°9'0"N
46°8'30"N
46°8'0"N
46°7'30"N
46°7'0"N

46°10'30"N
46°10'0"N
46°9'30"N
46°9'0"N
46°8'30"N
46°8'0"N
46°7'30"N
46°7'0"N

Div Y

- Division Break
- Drop Point
- Helibase
- Helispot
- Repeater
- Spike Camp
- Spot Fire
- Structure
- Water Source
- Burn Out Line
- H - Completed Hand Line
- Completed Mechanized Line
- Planned Line
- R - Road as Completed Line
- Uncontrolled Fire Edge
- FirePerimPoly

0 1 Miles



115°25'0"W 115°24'30"W 115°24'0"W 115°23'30"W 115°23'0"W 115°22'30"W 115°22'0"W 115°21'30"W 115°21'0"W 115°20'30"W 115°20'0"W 115°19'30"W 115°19'0"W 115°18'30"W 115°18'0"W 115°17'30"W 115°17'0"W 115°16'30"W