

115°34'30"W 115°34'0"W 115°33'30"W 115°33'0"W 115°32'30"W 115°32'0"W 115°31'30"W 115°31'0"W 115°30'30"W 115°30'0"W 115°29'30"W 115°29'0"W 115°28'30"W 115°28'0"W 115°27'30"W 115°27'0"W 115°26'30"W

Motorway Complex
Slide Branch
ID-NCF-000859
IAP Map
28 AUGUST 2015
Map Page 8



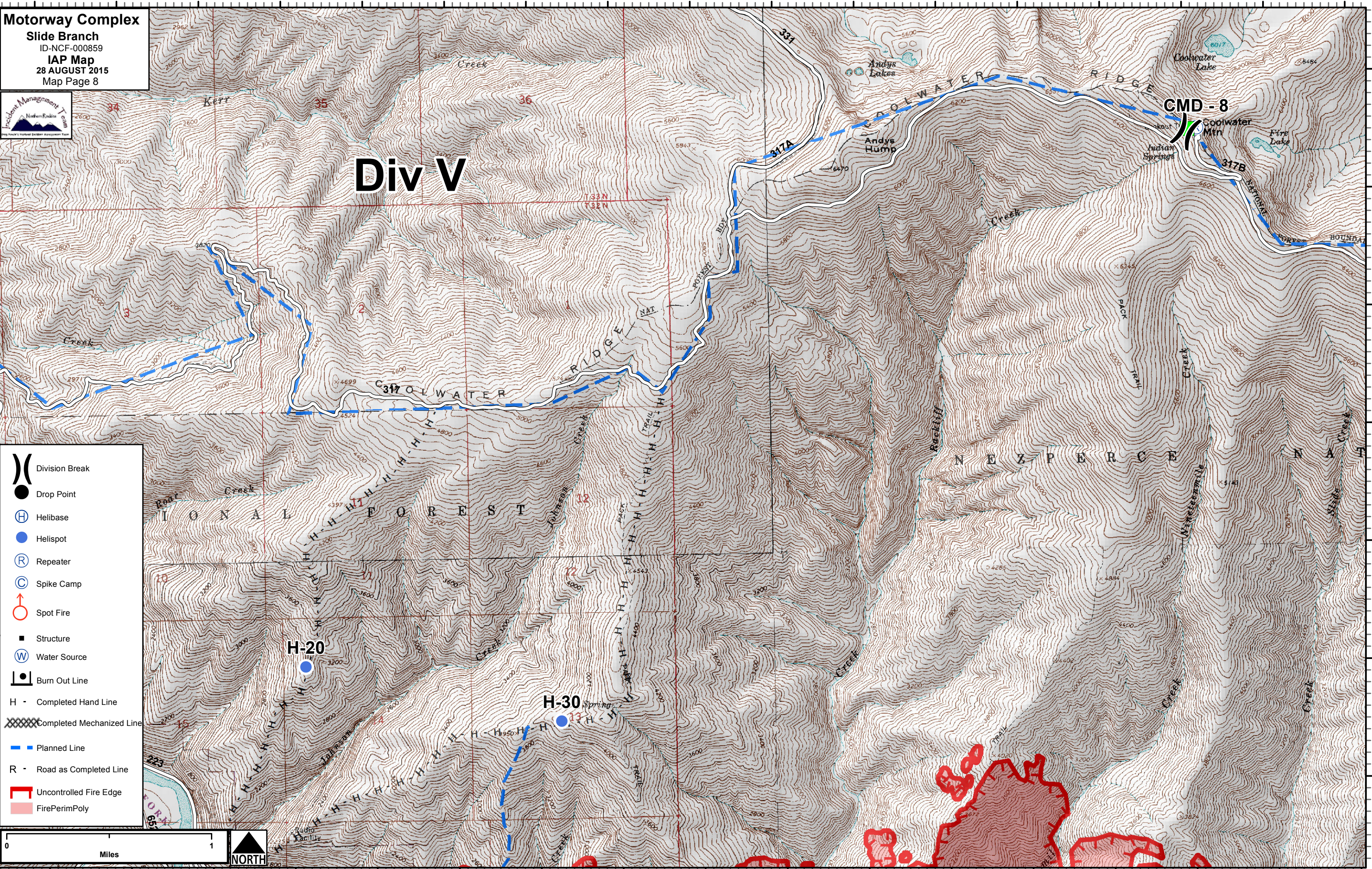
Div V

CMD - 8

- Division Break
- Drop Point
- Helibase
- Helispot
- Repeater
- Spike Camp
- Spot Fire
- Structure
- Water Source
- Burn Out Line
- H - Completed Hand Line
- Completed Mechanized Line
- Planned Line
- R - Road as Completed Line
- Uncontrolled Fire Edge
- FirePerimPoly



115°34'30"W 115°34'0"W 115°33'30"W 115°33'0"W 115°32'30"W 115°32'0"W 115°31'30"W 115°31'0"W 115°30'30"W 115°30'0"W 115°29'30"W 115°29'0"W 115°28'30"W 115°28'0"W 115°27'30"W 115°27'0"W 115°26'30"W



46°9'30"N
46°9'0"N
46°8'30"N
46°8'0"N
46°7'30"N
46°7'0"N
46°6'30"N

46°9'30"N
46°9'0"N
46°8'30"N
46°8'0"N
46°7'30"N
46°7'0"N
46°6'30"N