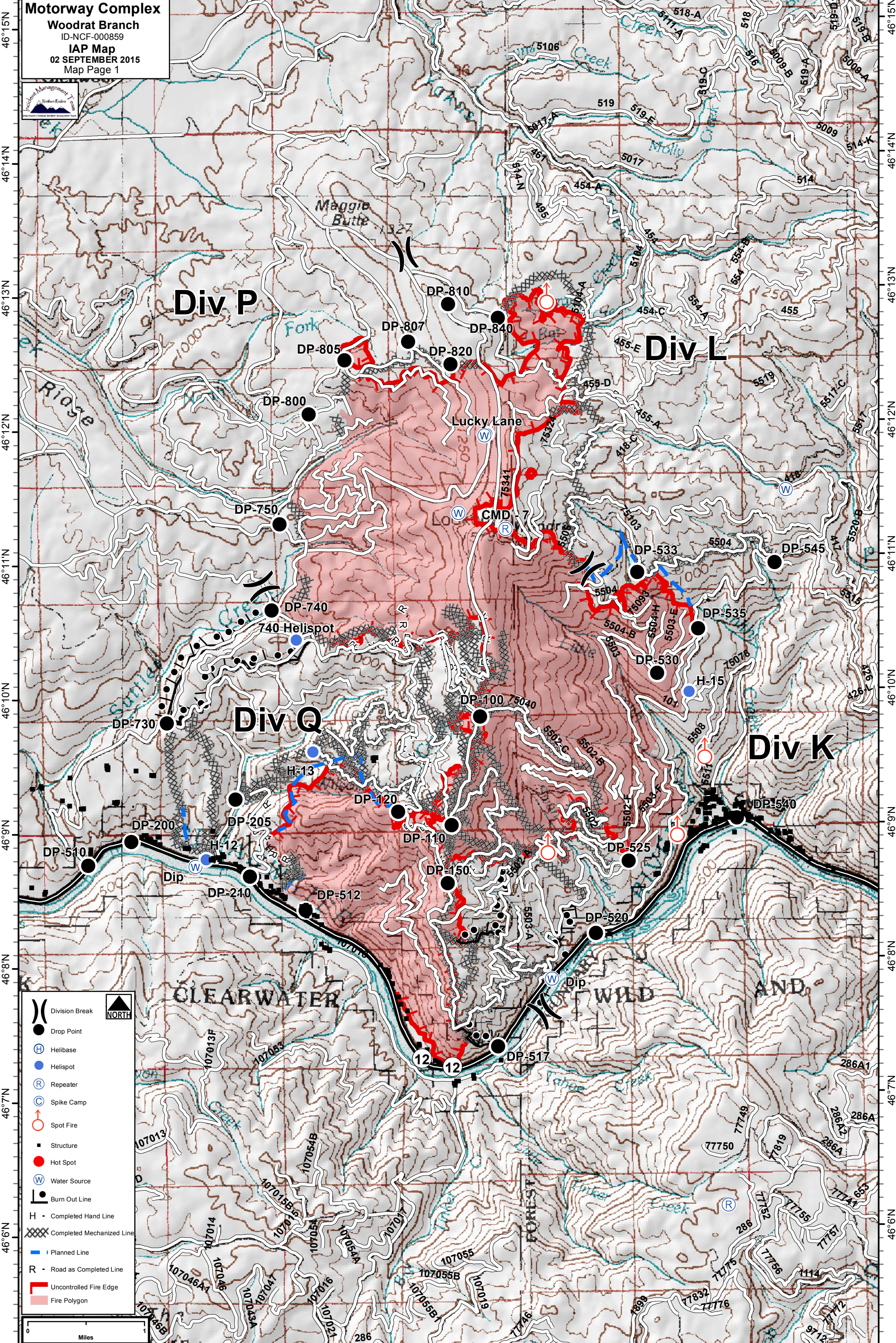


115°51'W 115°50'W 115°49'W 115°48'W 115°47'W 115°46'W 115°45'W 115°44'W 115°43'W 115°42'W



115°51'W 115°50'W 115°49'W 115°48'W 115°47'W 115°46'W 115°45'W 115°44'W 115°43'W 115°42'W

**Motorway Complex**  
**Woodrat Branch**  
ID-NCF-000859  
**IAP Map**  
02 SEPTEMBER 2015  
Map Page 1



**Div P**

**Div L**

**Div Q**

**Div K**

**CLEARWATER**

**WILD**

**AND**

- Division Break
- Drop Point
- Helibase
- Helispot
- Repeater
- Spike Camp
- Spot Fire
- Structure
- Hot Spot
- Water Source
- Burn Out Line
- Completed Hand Line
- Completed Mechanized Line
- Planned Line
- Road as Completed Line
- Uncontrolled Fire Edge
- Fire Polygon

0 Miles

