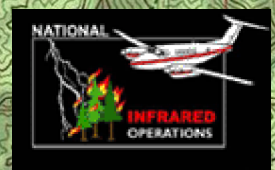
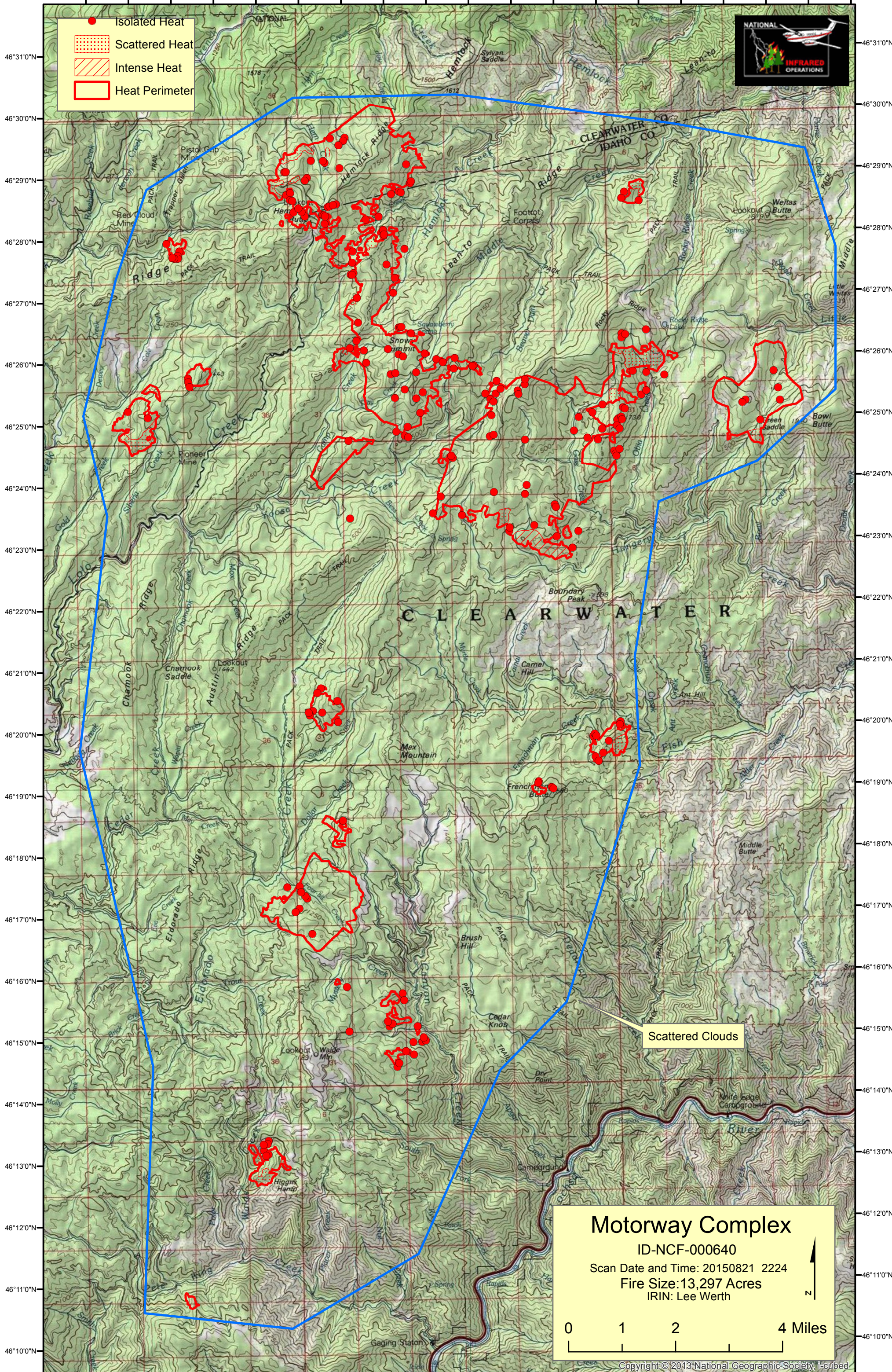


115°43'0"W 115°42'0"W 115°41'0"W 115°40'0"W 115°39'0"W 115°38'0"W 115°37'0"W 115°36'0"W 115°35'0"W 115°34'0"W 115°33'0"W 115°32'0"W 115°31'0"W 115°30'0"W 115°29'0"W 115°28'0"W 115°27'0"W 115°26'0"W 115°25'0"W



- Isolated Heat
- Scattered Heat
- Intense Heat
- Heat Perimeter



Scattered Clouds

Motorway Complex
 ID-NCF-000640
 Scan Date and Time: 20150821 2224
 Fire Size: 13,297 Acres
 IRIN: Lee Werth

0 1 2 4 Miles

Copyright © 2013 National Geographic Society, I-cubed

115°44'0"W 115°43'0"W 115°42'0"W 115°41'0"W 115°40'0"W 115°39'0"W 115°38'0"W 115°37'0"W 115°36'0"W 115°35'0"W 115°34'0"W 115°33'0"W 115°32'0"W 115°31'0"W 115°30'0"W 115°29'0"W 115°28'0"W 115°27'0"W 115°26'0"W