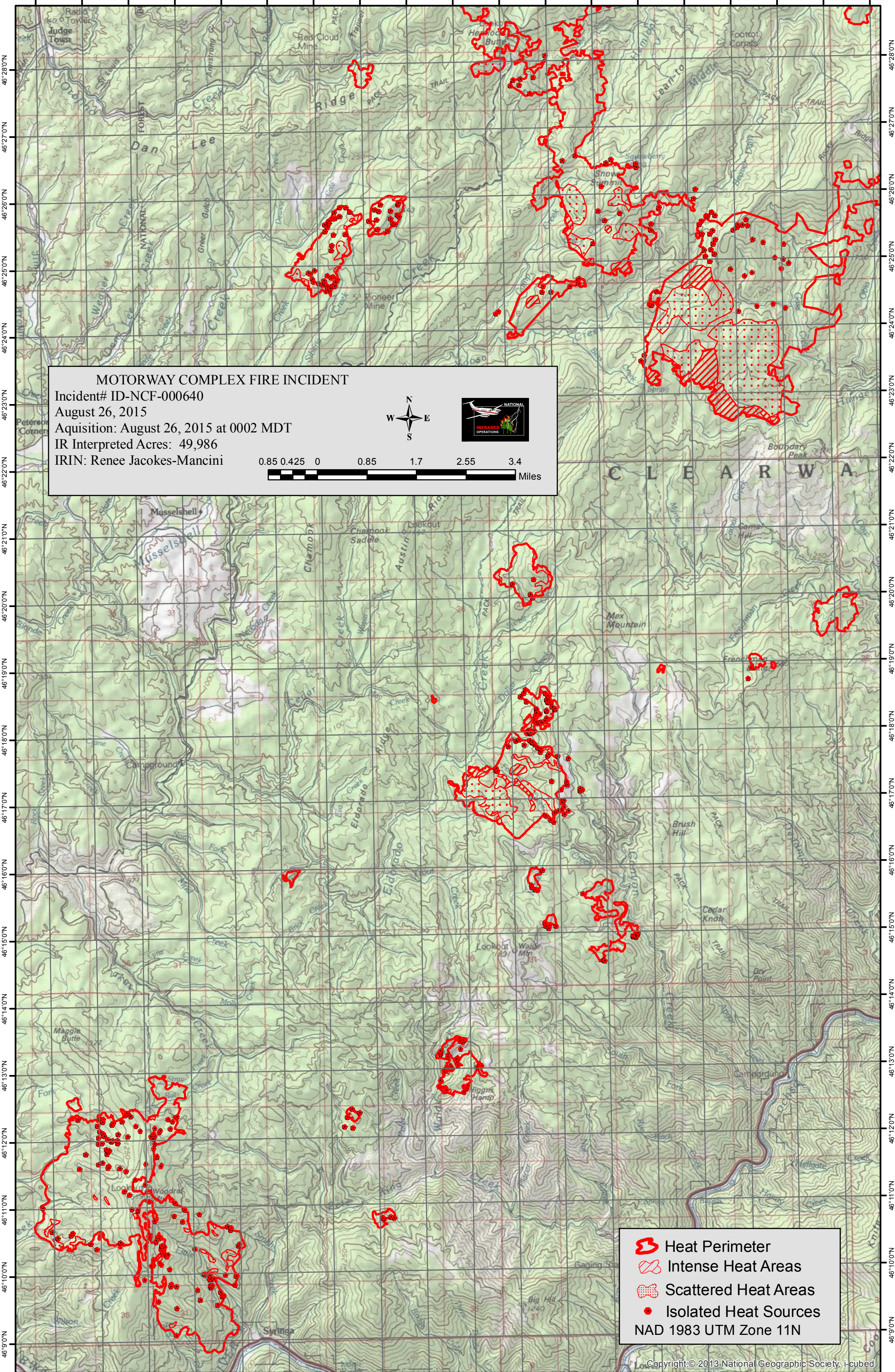


115°48'0"W 115°47'0"W 115°46'0"W 115°45'0"W 115°44'0"W 115°43'0"W 115°42'0"W 115°41'0"W 115°40'0"W 115°39'0"W 115°38'0"W 115°37'0"W 115°36'0"W 115°35'0"W 115°34'0"W 115°33'0"W 115°32'0"W 115°31'0"W 115°30'0"W



**MOTORWAY COMPLEX FIRE INCIDENT**  
 Incident# ID-NCF-000640  
 August 26, 2015  
 Aquisition: August 26, 2015 at 0002 MDT  
 IR Interpreted Acres: 49,986  
 IRIN: Renee Jacokes-Mancini

0.85 0.425 0 0.85 1.7 2.55 3.4 Miles

N  
W E  
S

- Heat Perimeter
  - Intense Heat Areas
  - Scattered Heat Areas
  - Isolated Heat Sources
- NAD 1983 UTM Zone 11N

115°48'0"W 115°47'0"W 115°46'0"W 115°45'0"W 115°44'0"W 115°43'0"W 115°42'0"W 115°41'0"W 115°40'0"W 115°39'0"W 115°38'0"W 115°37'0"W 115°36'0"W 115°35'0"W 115°34'0"W 115°33'0"W 115°32'0"W 115°31'0"W