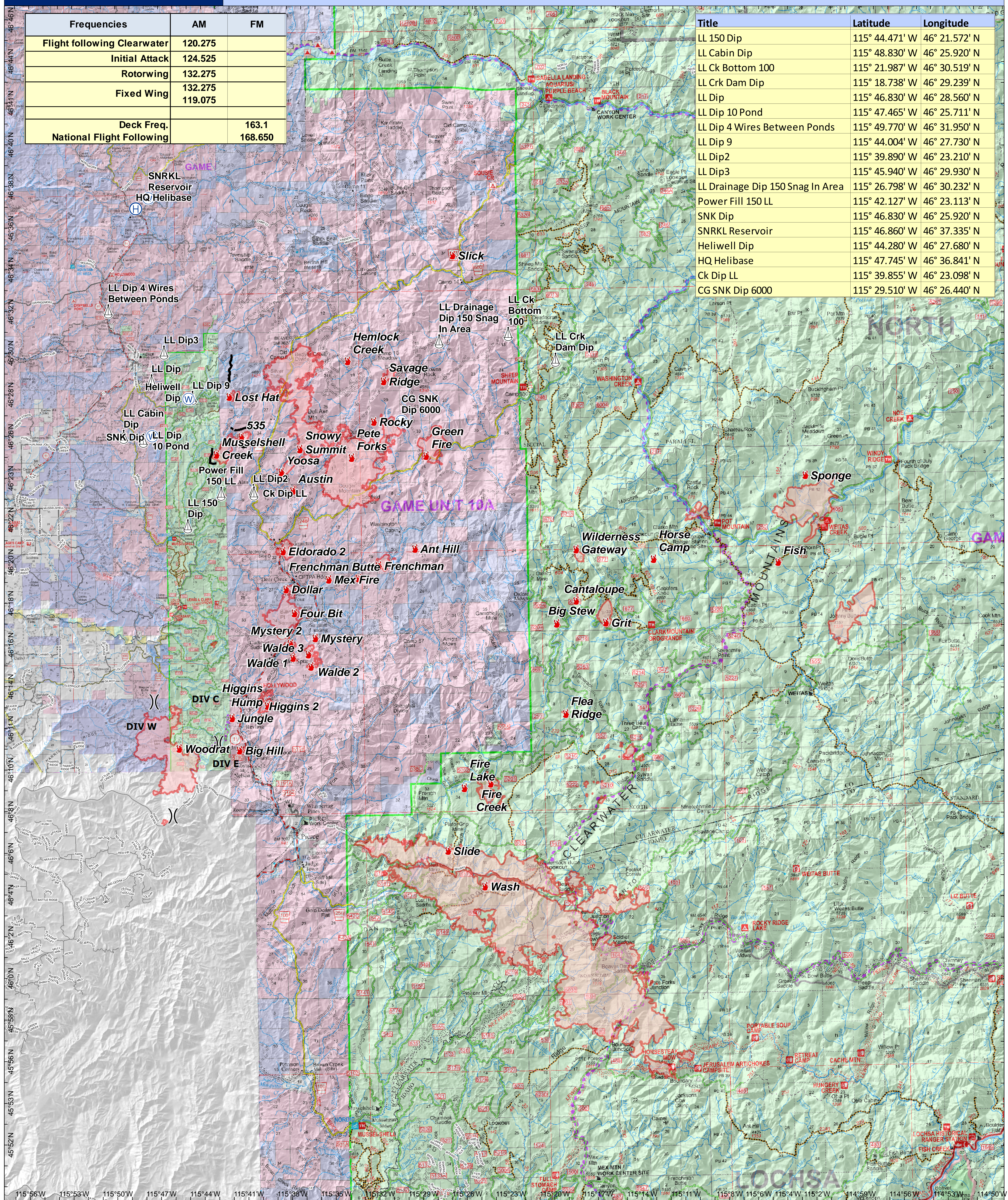




Frequencies	AM	FM
Flight following Clearwater	120.275	
Initial Attack	124.525	
Rotorwing	132.275	
Fixed Wing	132.275	119.075
Deck Freq.		163.1
National Flight Following		168.650

Title	Latitude	Longitude
LL 150 Dip	115° 44.471' W	46° 21.572' N
LL Cabin Dip	115° 48.830' W	46° 25.920' N
LL Ck Bottom 100	115° 21.987' W	46° 30.519' N
LL Crk Dam Dip	115° 18.738' W	46° 29.239' N
LL Dip	115° 46.830' W	46° 28.560' N
LL Dip 10 Pond	115° 47.465' W	46° 25.711' N
LL Dip 4 Wires Between Ponds	115° 49.770' W	46° 31.950' N
LL Dip 9	115° 44.004' W	46° 27.730' N
LL Dip2	115° 39.890' W	46° 23.210' N
LL Dip3	115° 45.940' W	46° 29.930' N
LL Drainage Dip 150 Snag In Area	115° 26.798' W	46° 30.232' N
Power Fill 150 LL	115° 42.127' W	46° 23.113' N
SNK Dip	115° 46.830' W	46° 25.920' N
SNRKL Reservoir	115° 46.860' W	46° 37.335' N
Heliwell Dip	115° 44.280' W	46° 27.680' N
HQ Helibase	115° 47.745' W	46° 36.841' N
Ck Dip LL	115° 39.855' W	46° 23.098' N
CG SNK Dip 6000	115° 29.510' W	46° 26.440' N



- Dip sites
- Heliwell
- Division
- Long line dip sites
- Fire Perimeter
- Roads



NAD\_1983\_UTM\_Zone\_11N 1 inch = 1.58 miles  
 D\_North\_American\_1983 1:100,000  
 0 2.5 5 10 Miles



Blue Team Sit Unit  
 11:05:37 PM  
 9/1/2015  
 Motorway Complex  
 Air Ops Map