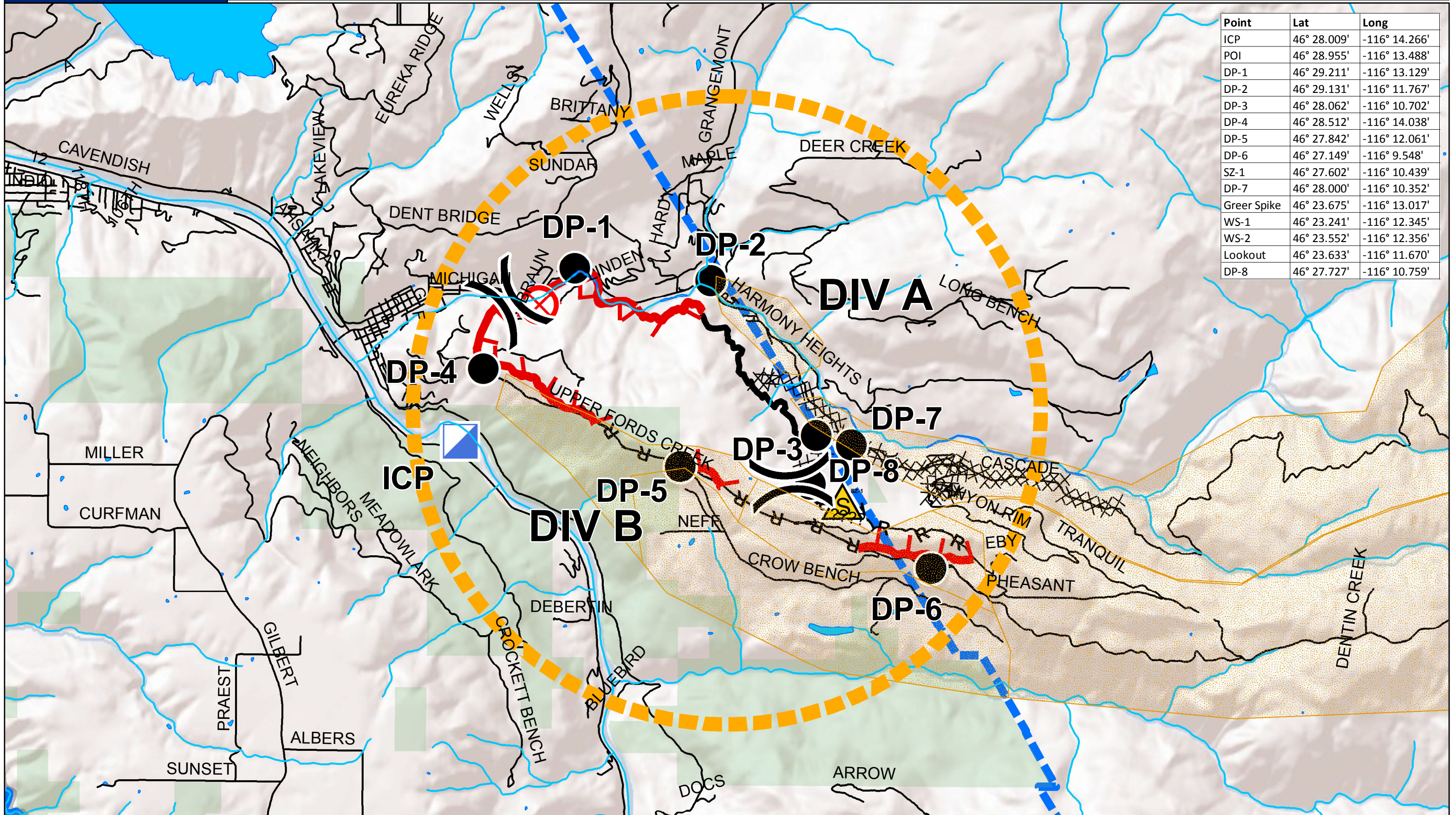




Point	Lat	Long
ICP	46° 28.009'	-116° 14.266'
POI	46° 28.955'	-116° 13.488'
DP-1	46° 29.211'	-116° 13.129'
DP-2	46° 29.131'	-116° 11.767'
DP-3	46° 28.062'	-116° 10.702'
DP-4	46° 28.512'	-116° 14.038'
DP-5	46° 27.842'	-116° 12.061'
DP-6	46° 27.149'	-116° 9.548'
SZ-1	46° 27.602'	-116° 10.439'
DP-7	46° 28.000'	-116° 10.352'
Greer Spike	46° 23.675'	-116° 13.017'
WS-1	46° 23.241'	-116° 12.345'
WS-2	46° 23.552'	-116° 12.356'
Lookout	46° 23.633'	-116° 11.670'
DP-8	46° 27.727'	-116° 10.759'



**Legend**

- Completed Line
- Uncontrolled Fire Edge
- Completed Dozer Line
- Proposed Dozer Line
- Planned Fire Line
- Planned Secondary Line
- Completed Line Break
- Explosive Line
- Planned Fire Break
- Nez\_Perce\_line
- Division
- Branch
- Drop Point
- Fire Origin
- Hot Spot
- Spot Fire
- Helispot
- Staging Area
- Dip Site
- Repeater
- Safety Zone
- Fire Station
- Helibase
- Incident Command Post
- Camp
- Incident Base

**Evac Areas**

- Level 1
- Level 2
- Level 3

**Spatial Reference and Scales**

NAD\_1983\_StatePlane\_Idaho\_West\_FIPS\_1103

1 inch = 0.71 miles      1:45,000

0 0.375 0.75 1.5 Miles

0 0.5 1 Kilometers

**Southern Area Blue Team Incident Management**

Blue Team Sit Unit  
8:41:32 PM  
8/20/2015

Municipal Complex  
Pilot Map