

Ownership

- USFS
- BLM
- STATE
- STATEFG
- HANCOCK
- MOLPUS
- STIMSON
- PRIVATE
- Lake / Pond / Rivers

Transportation

- I-90
- Hwy 3
- Paved
- Gravel
- Dirt
- Unknown
- Roads
- summit

Other Symbols

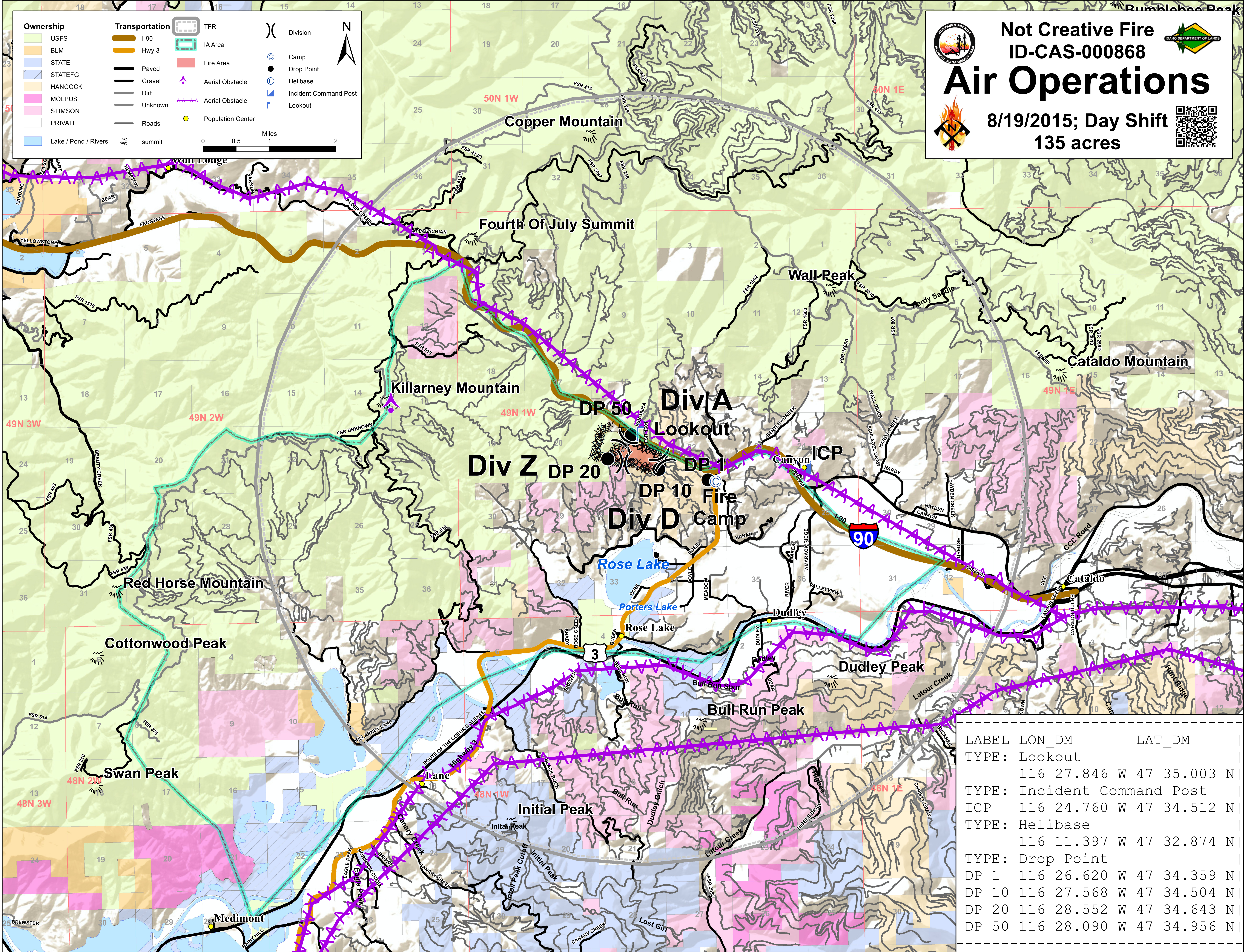
- TFR
- IA Area
- Fire Area
- Aerial Obstacle
- Aerial Obstacle
- Population Center
- Division
- Camp
- Drop Point
- Helibase
- Incident Command Post
- Lookout

0 0.5 1 2 Miles

Not Creative Fire
ID-CAS-000868

Air Operations

8/19/2015; Day Shift
135 acres



LABEL	LON_DM	LAT_DM
TYPE: Lookout	116 27.846 W	47 35.003 N
TYPE: Incident Command Post	116 24.760 W	47 34.512 N
TYPE: Helibase	116 11.397 W	47 32.874 N
TYPE: Drop Point		
DP 1	116 26.620 W	47 34.359 N
DP 10	116 27.568 W	47 34.504 N
DP 20	116 28.552 W	47 34.643 N
DP 50	116 28.090 W	47 34.956 N