

# Reynolds Fire

MT-GNP-000352  
**Operations Map July 29, 2015**  
 3,163 acres as of 20150727 1330 hrs

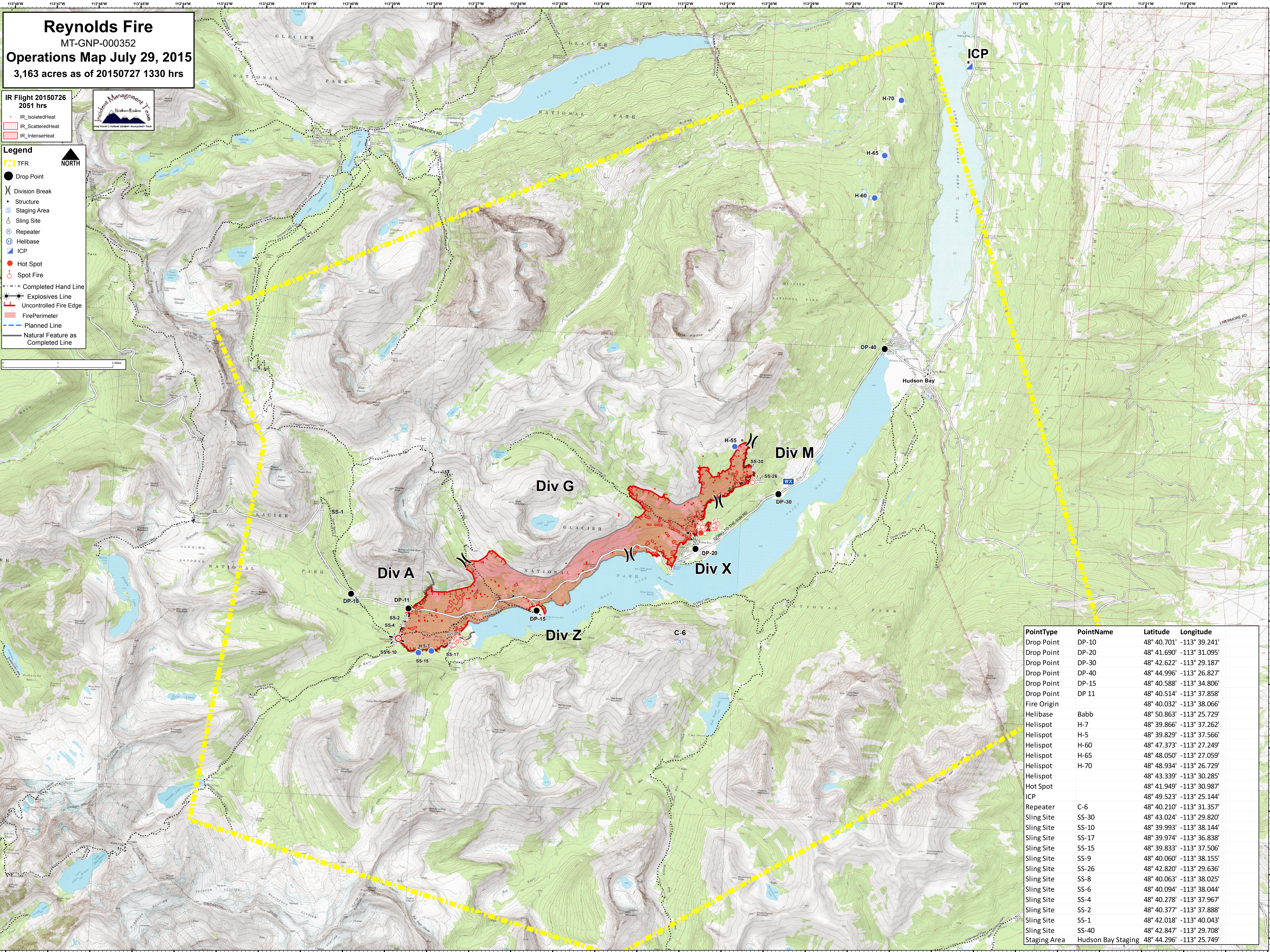
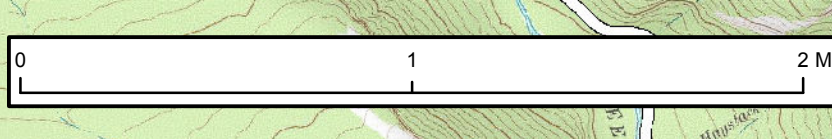
IR Flight 20150726  
 2051 hrs

- IR\_IsolatedHeat
- IR\_ScatteredHeat
- IR\_IntenseHeat



**Legend**

- TFR
- Drop Point
- Division Break
- Structure
- Staging Area
- Sling Site
- Repeater
- Helibase
- ICP
- Hot Spot
- Spot Fire
- Completed Hand Line
- Explosives Line
- Uncontrolled Fire Edge
- Fire Perimeter
- Planned Line
- Natural Feature as Completed Line



PointType	PointName	Latitude	Longitude
Drop Point	DP-10	48° 40.701'	-113° 39.241'
Drop Point	DP-20	48° 41.690'	-113° 31.095'
Drop Point	DP-30	48° 42.622'	-113° 29.187'
Drop Point	DP-40	48° 44.996'	-113° 26.827'
Drop Point	DP-15	48° 40.588'	-113° 34.806'
Drop Point	DP 11	48° 40.514'	-113° 37.858'
Fire Origin		48° 40.032'	-113° 38.066'
Helibase	Babb	48° 50.863'	-113° 25.729'
Helispot	H-7	48° 39.866'	-113° 37.262'
Helispot	H-5	48° 39.829'	-113° 37.566'
Helispot	H-60	48° 47.373'	-113° 27.249'
Helispot	H-65	48° 48.050'	-113° 27.059'
Helispot	H-70	48° 48.934'	-113° 26.729'
Helispot		48° 43.339'	-113° 30.285'
Hot Spot		48° 41.949'	-113° 30.987'
ICP		48° 49.523'	-113° 25.144'
Repeater	C-6	48° 40.210'	-113° 31.357'
Sling Site	SS-30	48° 43.024'	-113° 29.820'
Sling Site	SS-10	48° 39.993'	-113° 38.144'
Sling Site	SS-17	48° 39.974'	-113° 36.838'
Sling Site	SS-15	48° 39.833'	-113° 37.506'
Sling Site	SS-9	48° 40.060'	-113° 38.155'
Sling Site	SS-26	48° 42.820'	-113° 29.636'
Sling Site	SS-8	48° 40.063'	-113° 38.025'
Sling Site	SS-6	48° 40.094'	-113° 38.044'
Sling Site	SS-4	48° 40.278'	-113° 37.967'
Sling Site	SS-2	48° 40.377'	-113° 37.888'
Sling Site	SS-1	48° 42.018'	-113° 40.043'
Sling Site	SS-40	48° 42.847'	-113° 29.708'
Staging Area	Hudson Bay Staging	48° 44.296'	-113° 25.749'