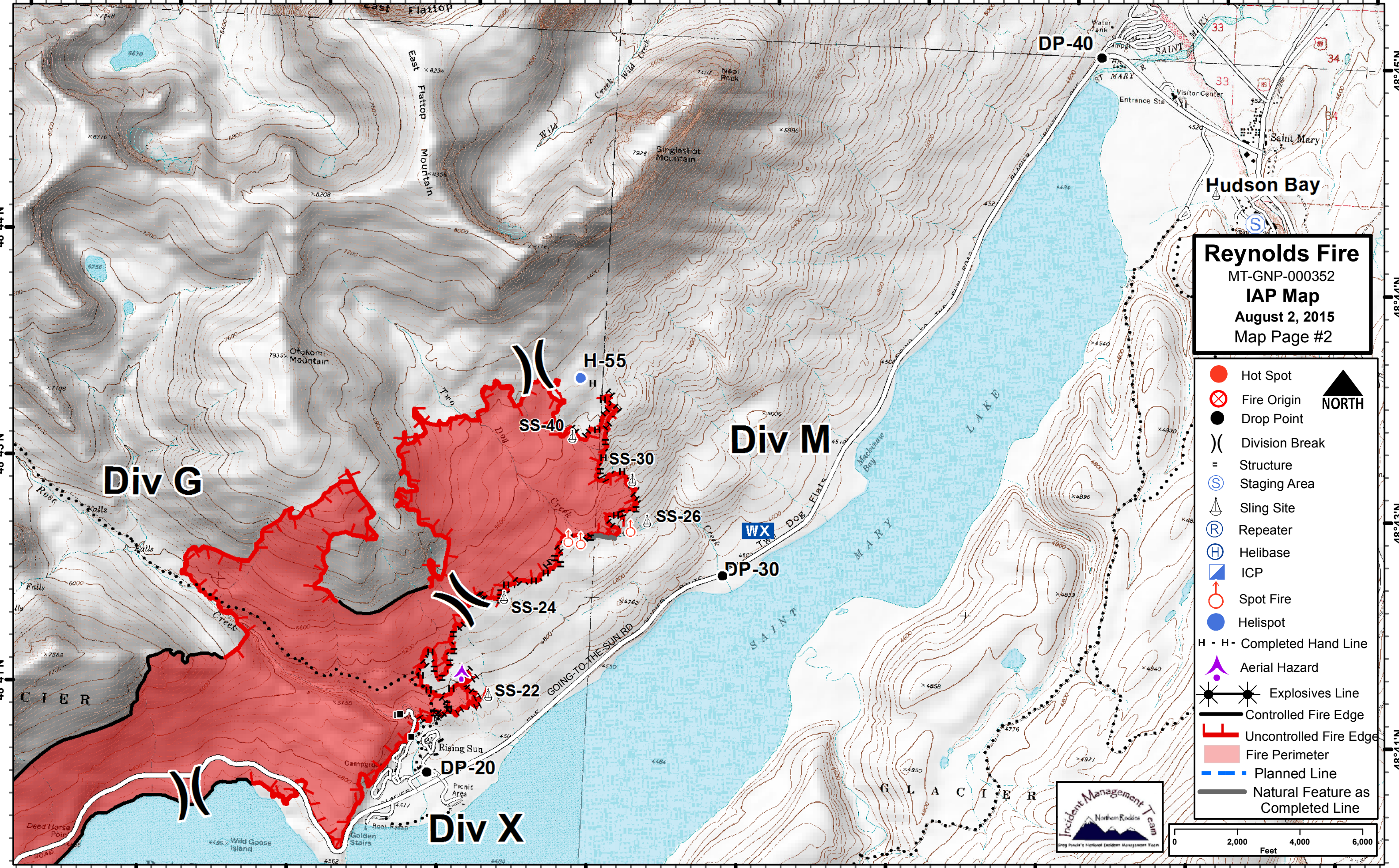
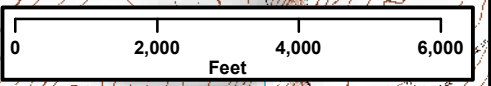


113°34'W 113°33'W 113°32'W 113°31'W 113°30'W 113°29'W 113°28'W 113°26'W 113°26'W 113°25'W



**Reynolds Fire**  
MT-GNP-000352  
**IAP Map**  
August 2, 2015  
Map Page #2

- Hot Spot
- ⊗ Fire Origin
- Drop Point
- ) Division Break
- Structure
- S Staging Area
- ⚓ Sling Site
- R Repeater
- H Helibase
- ICP
- ⊕ Spot Fire
- Helispot
- H - H - Completed Hand Line
- ▲ Aerial Hazard
- ✱ Explosives Line
- Controlled Fire Edge
- Uncontrolled Fire Edge
- Fire Perimeter
- Planned Line
- Natural Feature as Completed Line



113°33'W 113°32'W 113°31'W 113°30'W 113°29'W 113°28'W 113°26'W 113°26'W 113°25'W

48°44'N  
48°43'N  
48°41'N  
48°41'N

48°45'N  
48°44'N  
48°43'N  
48°41'N