

Reynolds

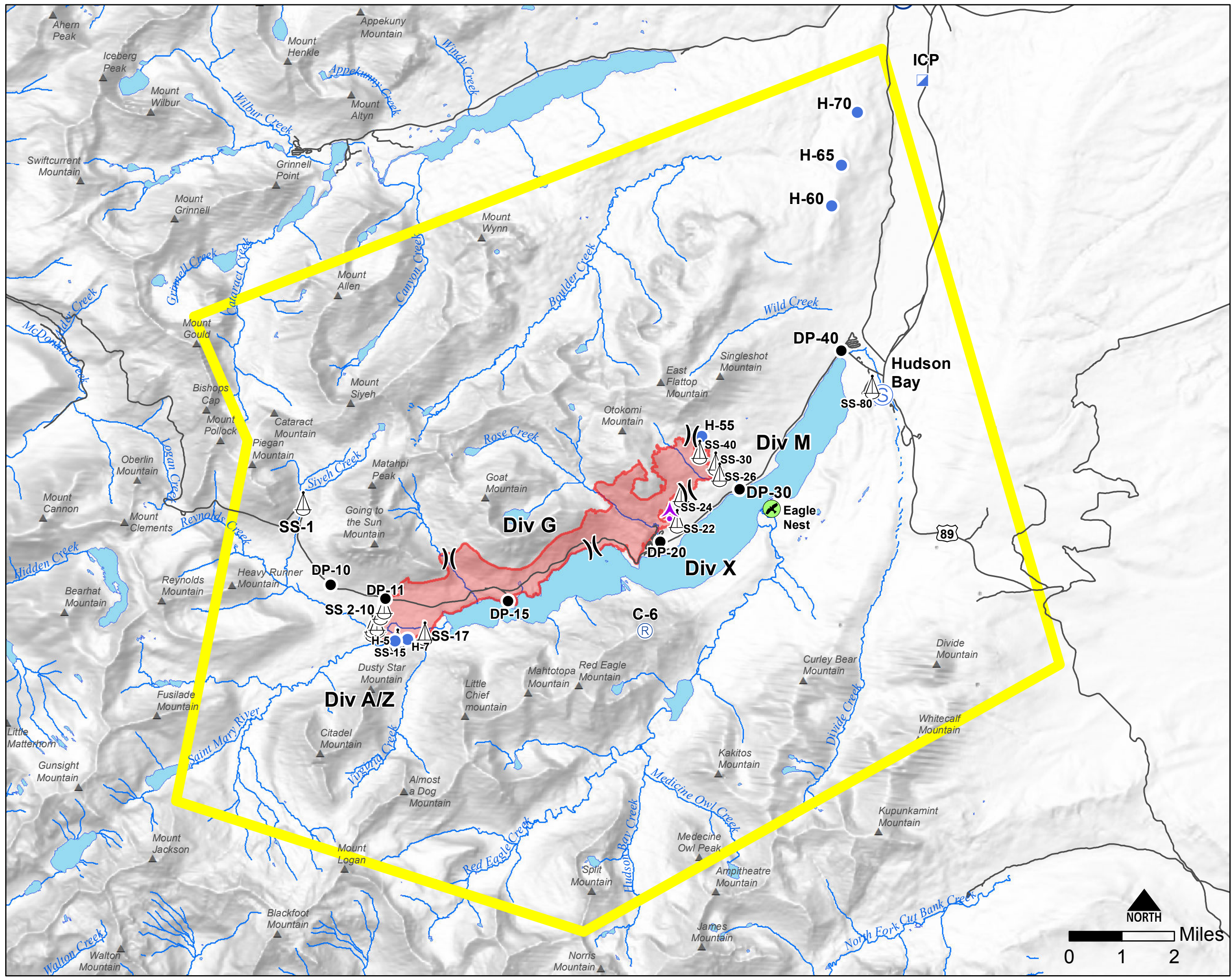
MT-GNP-000352

Pilot Map

August 2, 2015



PointName	Latitude	Longitude
Aerial Hazard	48 42.118'	-113 30.896'
DP-11	48 40.514'	-113 37.858'
DP-15	48 40.588'	-113 34.806'
DP-10	48 40.701'	-113 39.241'
DP-20	48 41.690'	-113 31.095'
DP-30	48 42.622'	-113 29.187'
DP-40	48 44.996'	-113 26.827'
Babb	48 50.863'	-113 25.729'
H-5	48 39.829'	-113 37.566'
H-7	48 39.866'	-113 37.262'
H-55	48 43.464'	-113 30.285'
H-60	48 47.373'	-113 27.249'
H-65	48 48.050'	-113 27.059'
H-70	48 48.934'	-113 26.729'
ICP	48 49.523'	-113 25.144'
C-6	48 40.210'	-113 31.357'
SS-1	48 42.018'	-113 40.043'
SS-2	48 40.377'	-113 37.888'
SS-4	48 40.278'	-113 37.967'
SS-6	48 40.094'	-113 38.044'
SS-8	48 40.063'	-113 38.025'
SS-9	48 40.060'	-113 38.155'
SS-10	48 39.993'	-113 38.144'
SS-15	48 39.833'	-113 37.506'
SS-17	48 39.974'	-113 36.838'
SS-22	48 42.043'	-113 30.709'
SS-24	48 42.476'	-113 30.640'
SS-26	48 42.847'	-113 29.708'
SS-30	48 43.024'	-113 29.820'
SS-40	48 43.203'	-113 30.235'
SS-80	48 44.420'	-113 26.019'
Hudson Bay Staging	48 44.296'	-113 25.749'



- ICP
- Drop Point
- Helispot (Approved)
- Staging Area
- Sling Site
- Repeater
- Aerial Hazard
- peaks
- TFR
- Fire Perimeter

