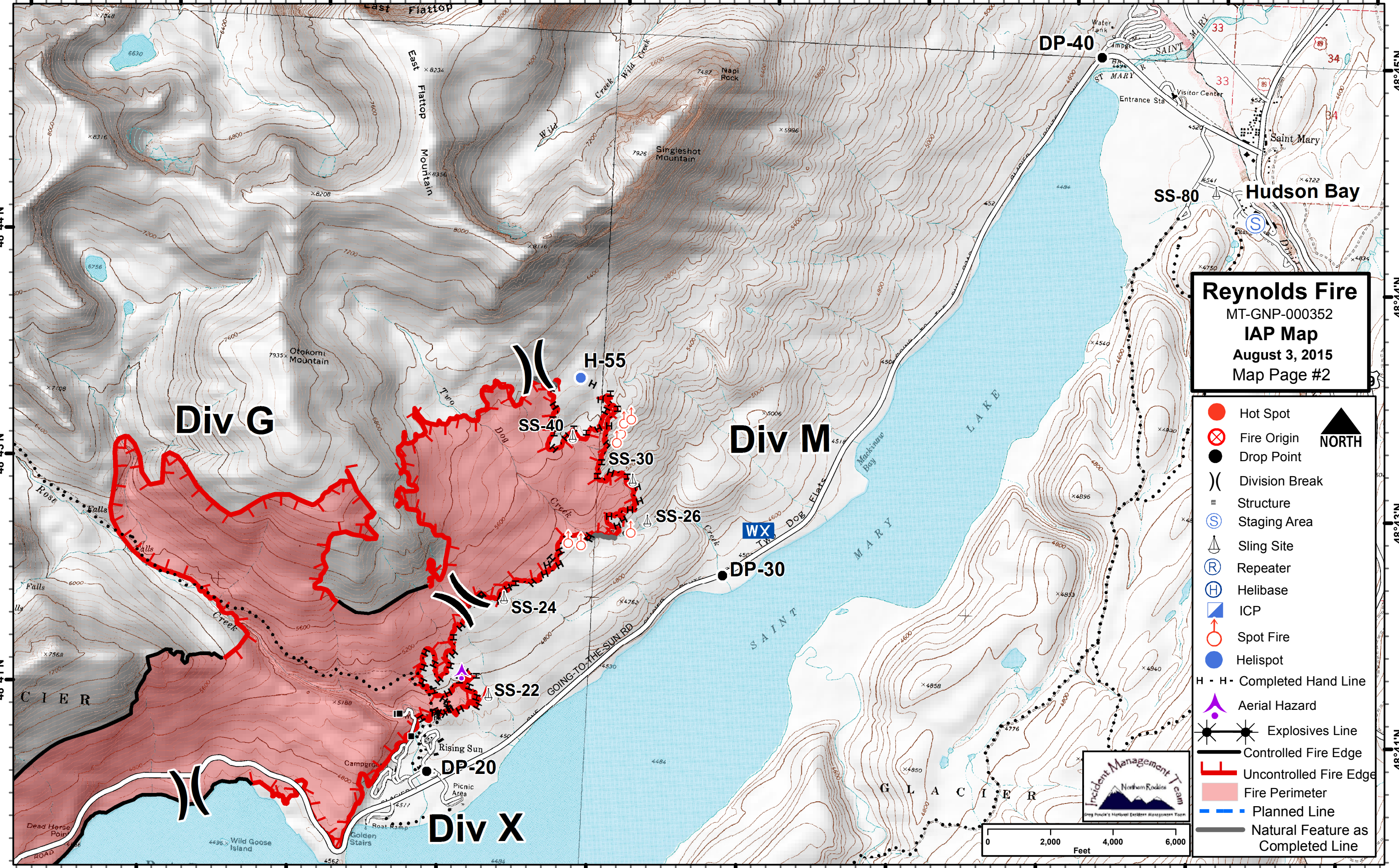
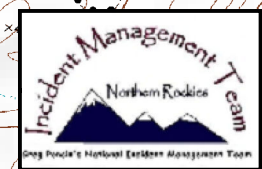


113°34'W 113°33'W 113°32'W 113°31'W 113°30'W 113°29'W 113°28'W 113°26'W 113°26'W 113°25'W



Reynolds Fire
MT-GNP-000352
IAP Map
August 3, 2015
Map Page #2

- Hot Spot
- ⊗ Fire Origin
- Drop Point
-) Division Break
- Structure
- S Staging Area
- △ Sling Site
- R Repeater
- H Helibase
- ▣ ICP
- ⊕ Spot Fire
- Helispot
- H - H - Completed Hand Line
- ▲ Aerial Hazard
- Explosives Line
- Controlled Fire Edge
- Uncontrolled Fire Edge
- Fire Perimeter
- Planned Line
- Natural Feature as Completed Line



113°33'W 113°32'W 113°31'W 113°30'W 113°29'W 113°28'W 113°26'W 113°26'W 113°25'W