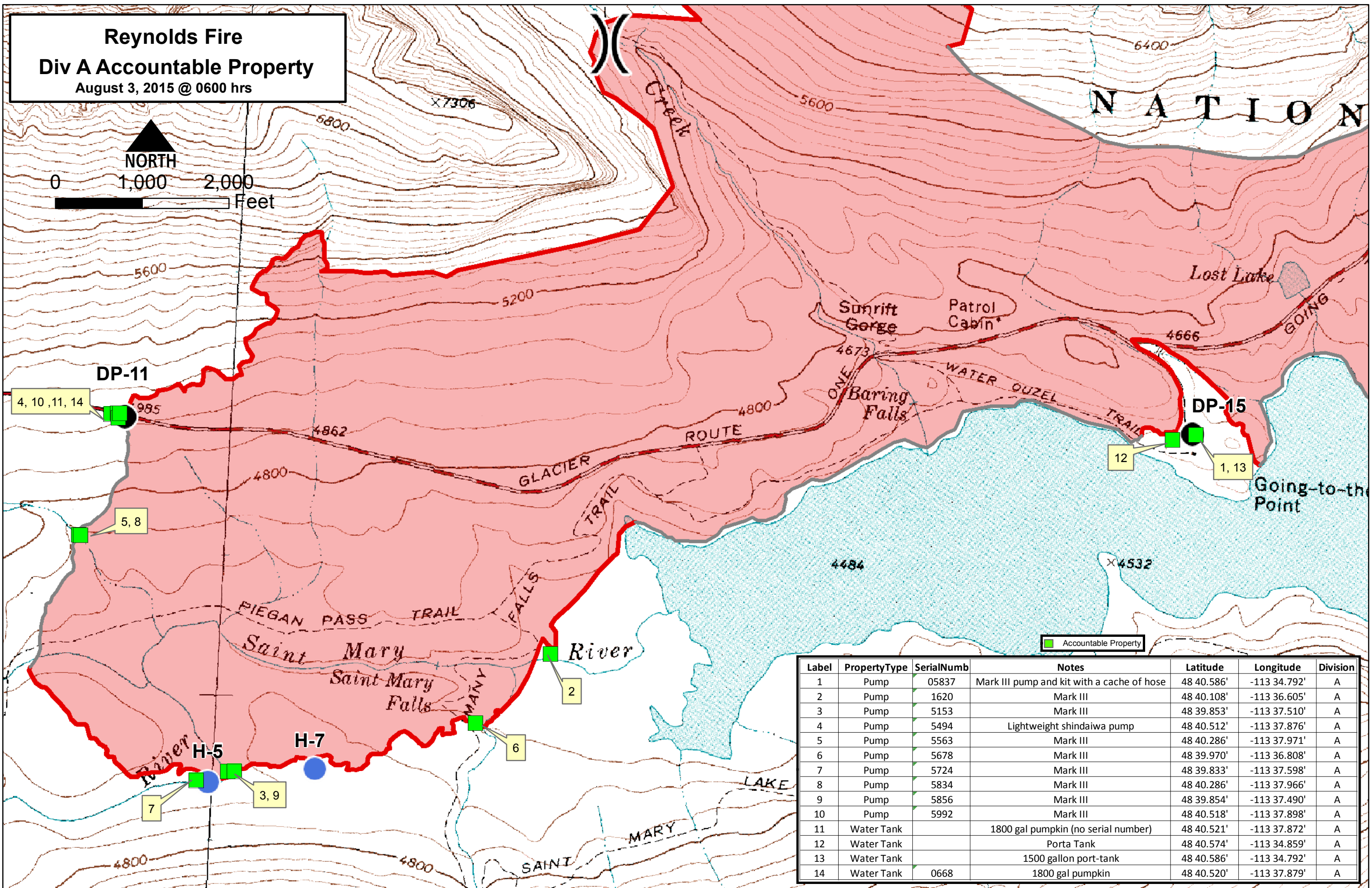
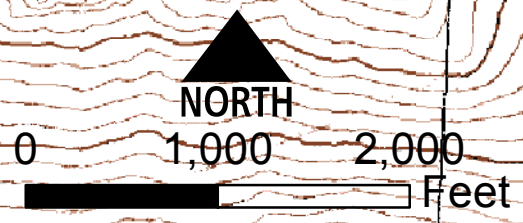


Reynolds Fire
Div A Accountable Property
 August 3, 2015 @ 0600 hrs



Label	PropertyType	SerialNumb	Notes	Latitude	Longitude	Division
1	Pump	05837	Mark III pump and kit with a cache of hose	48 40.586'	-113 34.792'	A
2	Pump	1620	Mark III	48 40.108'	-113 36.605'	A
3	Pump	5153	Mark III	48 39.853'	-113 37.510'	A
4	Pump	5494	Lightweight shindaiwa pump	48 40.512'	-113 37.876'	A
5	Pump	5563	Mark III	48 40.286'	-113 37.971'	A
6	Pump	5678	Mark III	48 39.970'	-113 36.808'	A
7	Pump	5724	Mark III	48 39.833'	-113 37.598'	A
8	Pump	5834	Mark III	48 40.286'	-113 37.966'	A
9	Pump	5856	Mark III	48 39.854'	-113 37.490'	A
10	Pump	5992	Mark III	48 40.518'	-113 37.898'	A
11	Water Tank		1800 gal pumpkin (no serial number)	48 40.521'	-113 37.872'	A
12	Water Tank		Porta Tank	48 40.574'	-113 34.859'	A
13	Water Tank		1500 gallon port-tank	48 40.586'	-113 34.792'	A
14	Water Tank	0668	1800 gal pumpkin	48 40.520'	-113 37.879'	A