

114°37'0"W

114°36'0"W

114°35'0"W

114°34'0"W

46°7'0"N

46°7'0"N

46°6'0"N

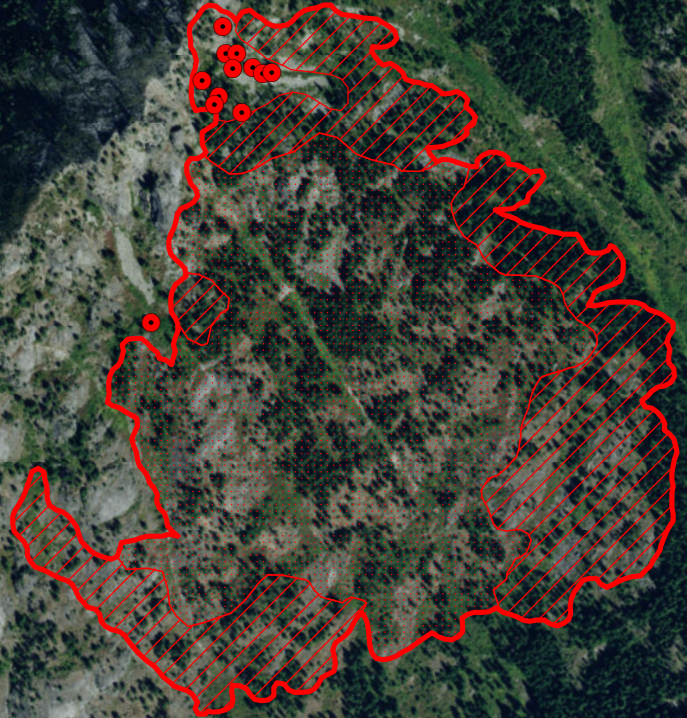
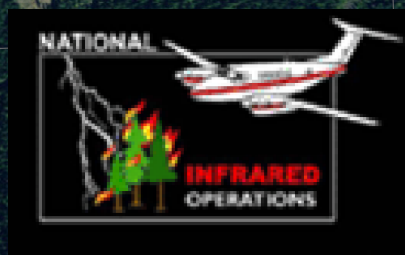
46°6'0"N

114°37'0"W




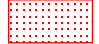
114°36'0"W

114°35'0"W

114°34'0"W



Rock Point
ID-NCF-000419
Map Date: 07/22/15
Imagery Date: 07/22/15
Time: 0135 MDT
Interpreted Acres: 163.0 Acres
IRIN Lance R. Brady

-  Isolated Heat
-  Heat Perimeter
-  Intense Heat
-  Scattered Heat

0 0.05 0.1 0.2 Miles

N

Source: Esri, DigitalGlobe, GeoEye, Earthstar Geographics, CNES/Airbus Community