

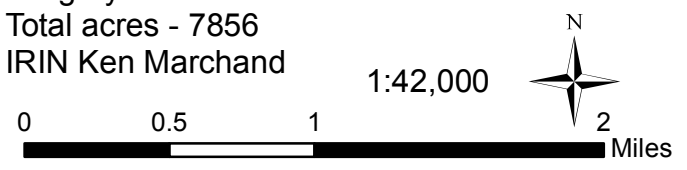
114°53'W 114°52'W 114°51'W 114°50'W 114°49'W 114°48'W 114°47'W 114°46'W 114°45'W 114°44'W 114°43'W 114°42'W 114°41'W

46°17'N
46°16'N
46°15'N
46°14'N
46°13'N
46°12'N

46°17'N
46°16'N
46°15'N
46°14'N
46°13'N
46°12'N

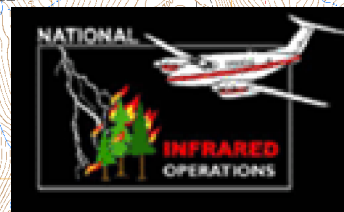
Roll Creek ID-NCF-000---
 Infrared Map - 08/27/2015
 Imagery Date - 08/26/2015 2213 MDT
 Total acres - 7856
 IRIN Ken Marchand

1:42,000



Legend

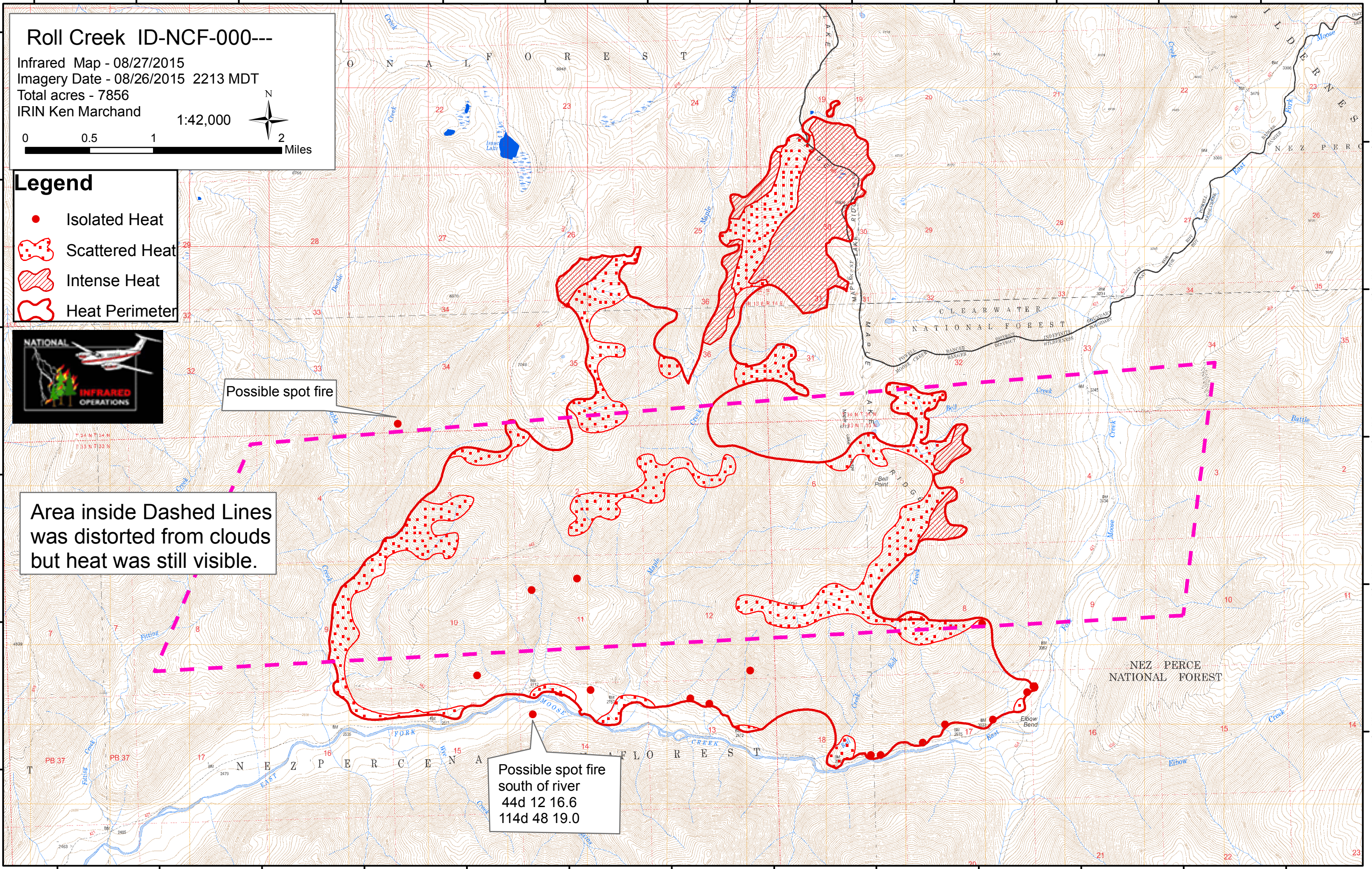
- Isolated Heat
- Scattered Heat
- Intense Heat
- Heat Perimeter



Possible spot fire

Area inside Dashed Lines was distorted from clouds but heat was still visible.

Possible spot fire south of river
 44d 12 16.6
 114d 48 19.0



114°53'W 114°52'W 114°51'W 114°50'W 114°49'W 114°48'W 114°47'W 114°46'W 114°45'W 114°44'W 114°43'W 114°42'W 114°41'W