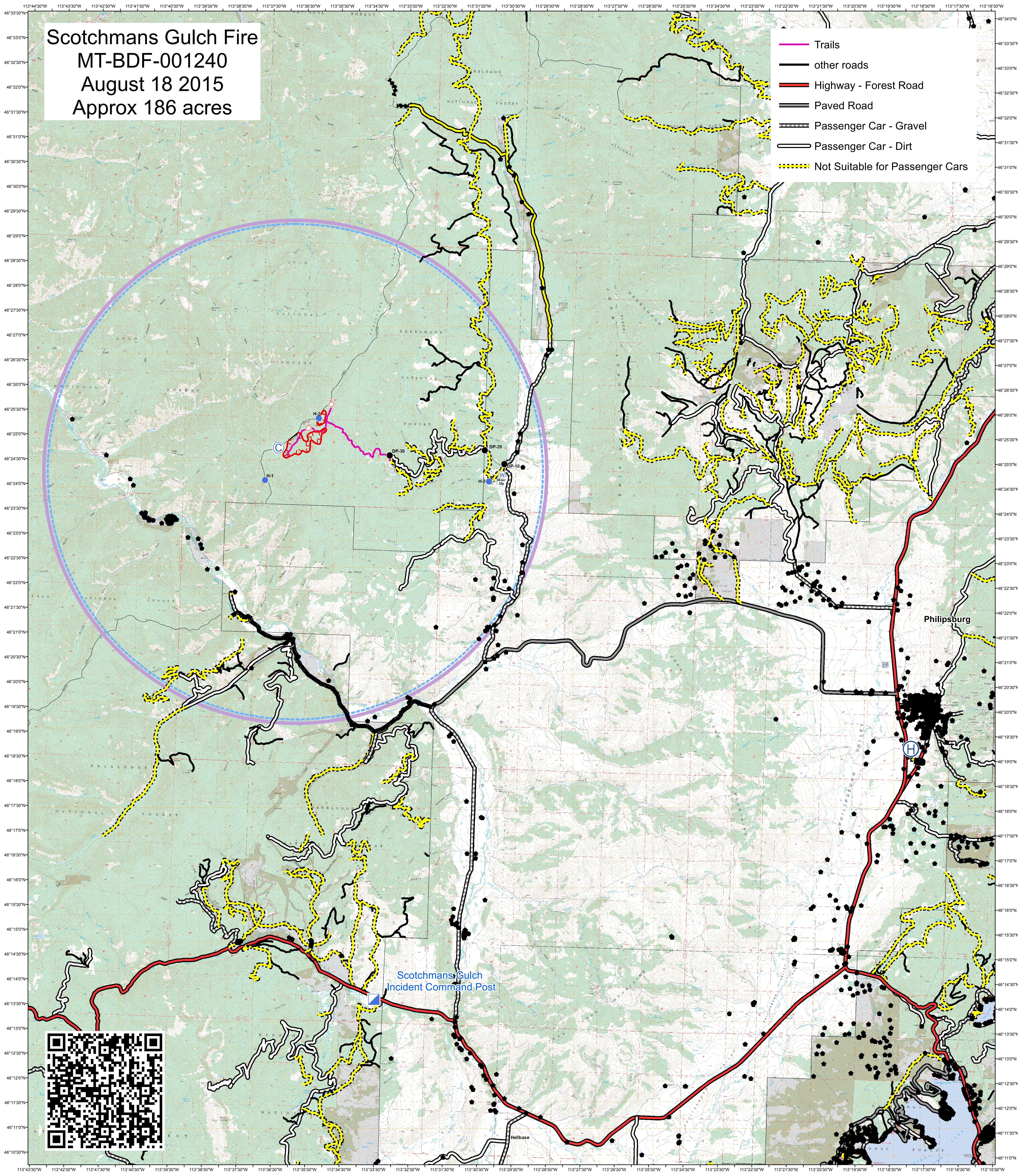









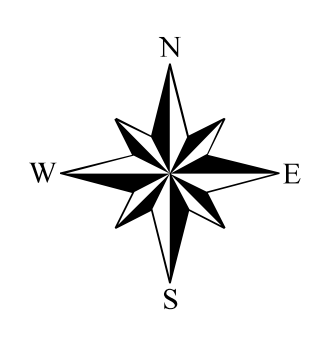
Scotchmans Gulch Fire
 MT-BDF-001240
 August 18 2015
 Approx 186 acres

-  Trails
-  other roads
-  Highway - Forest Road
-  Paved Road
-  Passenger Car - Gravel
-  Passenger Car - Dirt
-  Not Suitable for Passenger Cars



-  Camp
-  Drop Point
-  Helibase
-  Helispot
-  Incident Command Post
-  Spot Fire
-  Water Source

Transportation



 Temporary Flight Restrictions

