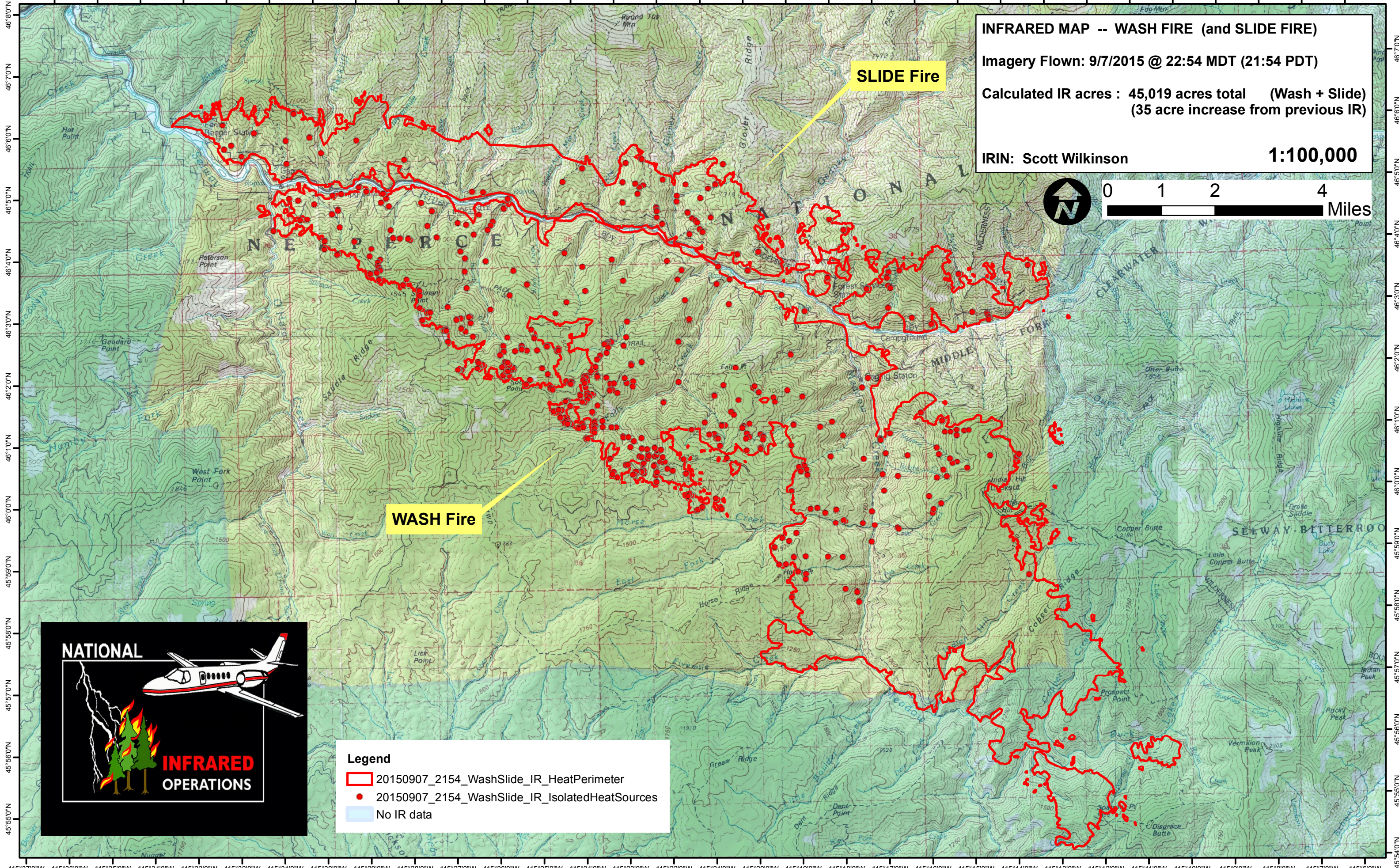
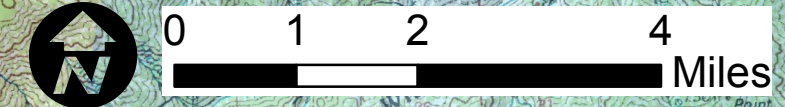


115°36'0"W 115°35'0"W 115°34'0"W 115°33'0"W 115°32'0"W 115°31'0"W 115°30'0"W 115°29'0"W 115°28'0"W 115°27'0"W 115°26'0"W 115°25'0"W 115°24'0"W 115°23'0"W 115°22'0"W 115°21'0"W 115°20'0"W 115°19'0"W 115°18'0"W 115°17'0"W 115°16'0"W 115°15'0"W 115°14'0"W 115°13'0"W 115°12'0"W 115°11'0"W 115°10'0"W 115°9'0"W 115°8'0"W 115°7'0"W 115°6'0"W



**INFRARED MAP -- WASH FIRE (and SLIDE FIRE)**  
Imagery Flown: 9/7/2015 @ 22:54 MDT (21:54 PDT)  
Calculated IR acres : 45,019 acres total (Wash + Slide)  
(35 acre increase from previous IR)  
IRIN: Scott Wilkinson **1:100,000**



**WASH Fire**

**SLIDE Fire**



**Legend**  
20150907\_2154\_WashSlide\_IR\_HeatPerimeter  
20150907\_2154\_WashSlide\_IR\_IsolatedHeatSources  
No IR data

115°37'0"W 115°36'0"W 115°35'0"W 115°34'0"W 115°33'0"W 115°32'0"W 115°31'0"W 115°30'0"W 115°29'0"W 115°28'0"W 115°27'0"W 115°26'0"W 115°25'0"W 115°24'0"W 115°23'0"W 115°22'0"W 115°21'0"W 115°20'0"W 115°19'0"W 115°18'0"W 115°17'0"W 115°16'0"W 115°15'0"W 115°14'0"W 115°13'0"W 115°12'0"W 115°11'0"W 115°10'0"W 115°9'0"W 115°8'0"W 115°7'0"W 115°6'0"W