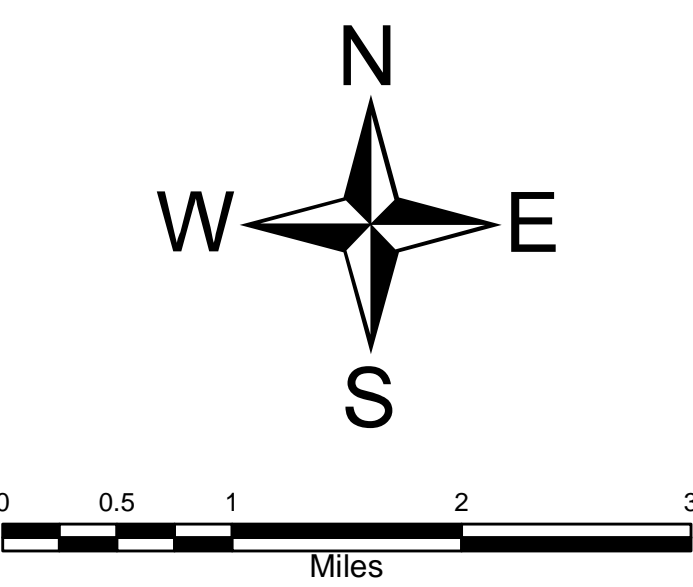
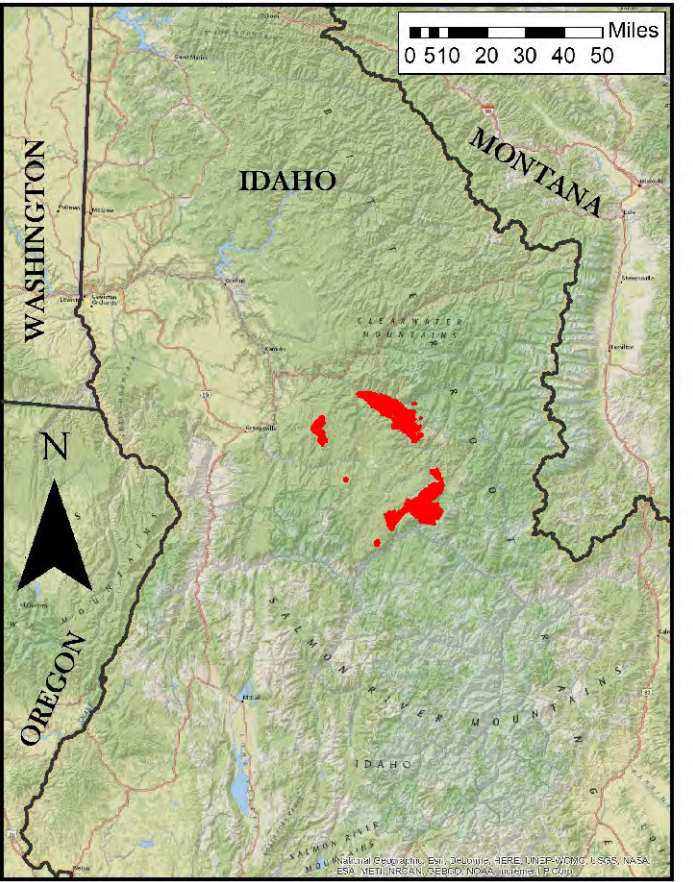
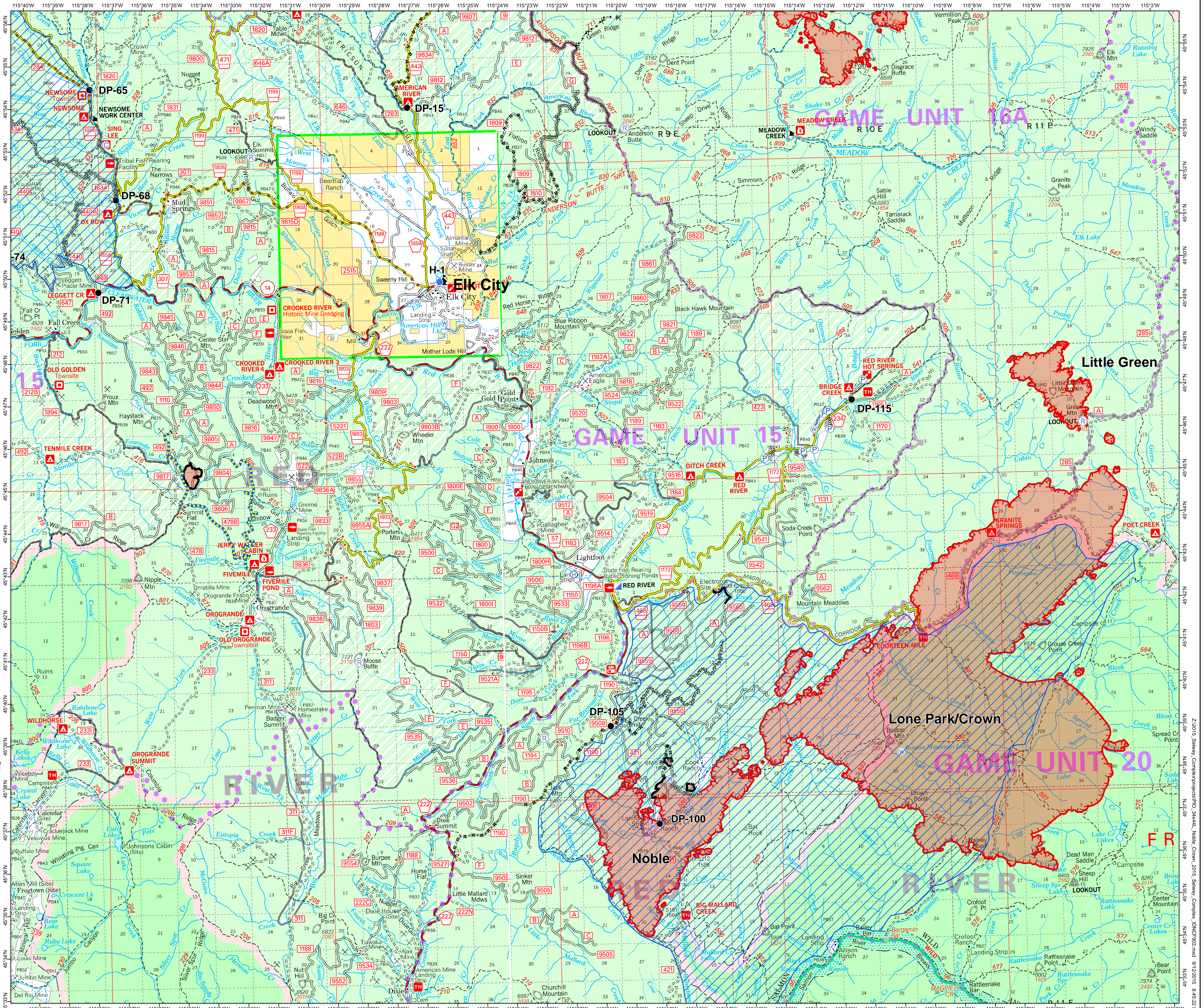


Selway Complex  
000902  
84,247 Acres  
09/13/2015  
Noble  
Lone Park/Crown  
Little Green

- Legend**
- Repeater
  - Camp
  - Drop Point
  - Helibase
  - Helispot
  - Incident Command Post
  - Lookout
  - Pump
  - Water Source
  - Air Tanker Retardant
  - Completed Line
  - Completed Dozer Line
  - Fire Break Planned or Incomplete
  - Hand Line
  - Proposed Dozer Line
  - R - R Road as Completed Line
  - Uncontrolled Fire Edge
  - Road/Trail Closures
  - Area Closures
  - Other Area Fires
  - Fire Polygon



Map Prepared by:  
Southern Area Red Team  
NAD 83 UTM Zone 11N  
September 12, 2015 2045 hrs



45°56'N  
45°55'N  
45°54'N  
45°53'N  
45°52'N  
45°51'N  
45°50'N  
45°49'N  
45°48'N  
45°47'N  
45°46'N  
45°45'N  
45°44'N  
45°43'N  
45°42'N  
45°41'N  
45°40'N  
45°39'N  
45°38'N  
45°37'N  
45°36'N  
45°35'N  
45°34'N  
45°33'N  
45°32'N  
45°31'N  
45°30'N  
45°29'N  
45°28'N  
45°27'N  
45°26'N  
45°25'N  
45°24'N  
45°23'N  
45°22'N  
45°21'N  
45°20'N  
45°19'N  
45°18'N  
45°17'N  
45°16'N  
45°15'N  
45°14'N  
45°13'N  
45°12'N  
45°11'N  
45°10'N  
45°9'N  
45°8'N  
45°7'N  
45°6'N  
45°5'N  
45°4'N  
45°3'N  
45°2'N  
45°1'N  
115°40'W  
115°39'W  
115°38'W  
115°37'W  
115°36'W  
115°35'W  
115°34'W  
115°33'W  
115°32'W  
115°31'W  
115°30'W  
115°29'W  
115°28'W  
115°27'W  
115°26'W  
115°25'W  
115°24'W  
115°23'W  
115°22'W  
115°21'W  
115°20'W  
115°19'W  
115°18'W  
115°17'W  
115°16'W  
115°15'W  
115°14'W  
115°13'W  
115°12'W  
115°11'W  
115°10'W  
115°9'W  
115°8'W  
115°7'W  
115°6'W  
115°5'W  
115°4'W  
115°3'W  
115°2'W