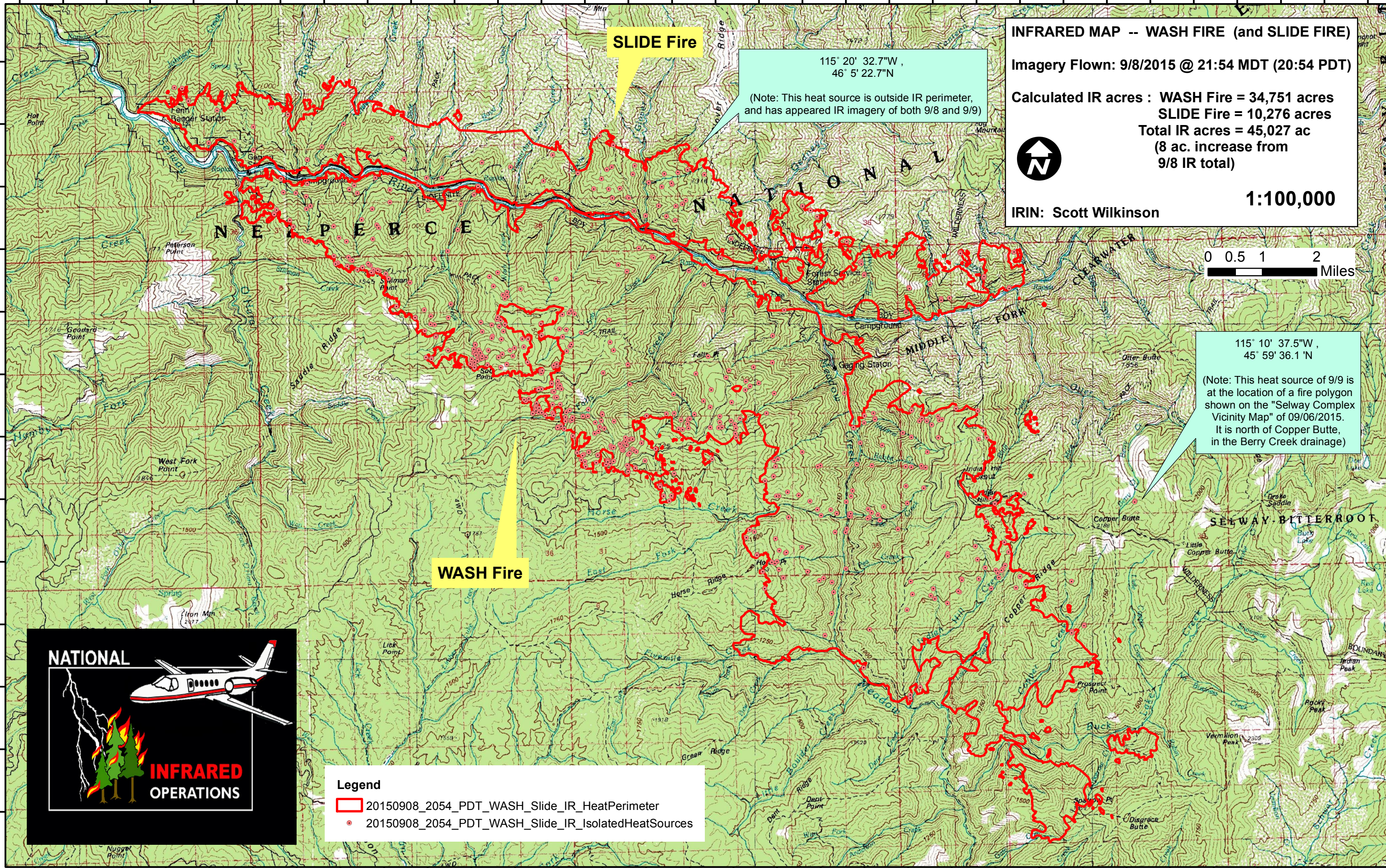


115°36'0"W 115°35'0"W 115°34'0"W 115°33'0"W 115°32'0"W 115°31'0"W 115°30'0"W 115°29'0"W 115°28'0"W 115°27'0"W 115°26'0"W 115°25'0"W 115°24'0"W 115°23'0"W 115°22'0"W 115°21'0"W 115°20'0"W 115°19'0"W 115°18'0"W 115°17'0"W 115°16'0"W 115°15'0"W 115°14'0"W 115°13'0"W 115°12'0"W 115°11'0"W 115°10'0"W 115°9'0"W 115°8'0"W 115°7'0"W 115°6'0"W 115°5'0"W



INFRARED MAP -- WASH FIRE (and SLIDE FIRE)

Imagery Flown: 9/8/2015 @ 21:54 MDT (20:54 PDT)

Calculated IR acres : WASH Fire = 34,751 acres
SLIDE Fire = 10,276 acres
Total IR acres = 45,027 ac
(8 ac. increase from 9/8 IR total)



1:100,000

IRIN: Scott Wilkinson



115° 20' 32.7"W ,
46° 5' 22.7"N
(Note: This heat source is outside IR perimeter,
and has appeared IR imagery of both 9/8 and 9/9)

115° 10' 37.5"W ,
45° 59' 36.1" N
(Note: This heat source of 9/9 is
at the location of a fire polygon
shown on the "Selway Complex
Vicinity Map" of 09/06/2015.
It is north of Copper Butte,
in the Berry Creek drainage)

SLIDE Fire

WASH Fire



- Legend**
- 20150908_2054_PDT_WASH_Slide_IR_HeatPerimeter
 - 20150908_2054_PDT_WASH_Slide_IR_IsolatedHeatSources

115°36'0"W 115°35'0"W 115°34'0"W 115°33'0"W 115°32'0"W 115°31'0"W 115°30'0"W 115°29'0"W 115°28'0"W 115°27'0"W 115°26'0"W 115°25'0"W 115°24'0"W 115°23'0"W 115°22'0"W 115°21'0"W 115°20'0"W 115°19'0"W 115°18'0"W 115°17'0"W 115°16'0"W 115°15'0"W 115°14'0"W 115°13'0"W 115°12'0"W 115°11'0"W 115°10'0"W 115°9'0"W 115°8'0"W 115°7'0"W 115°6'0"W 115°5'0"W