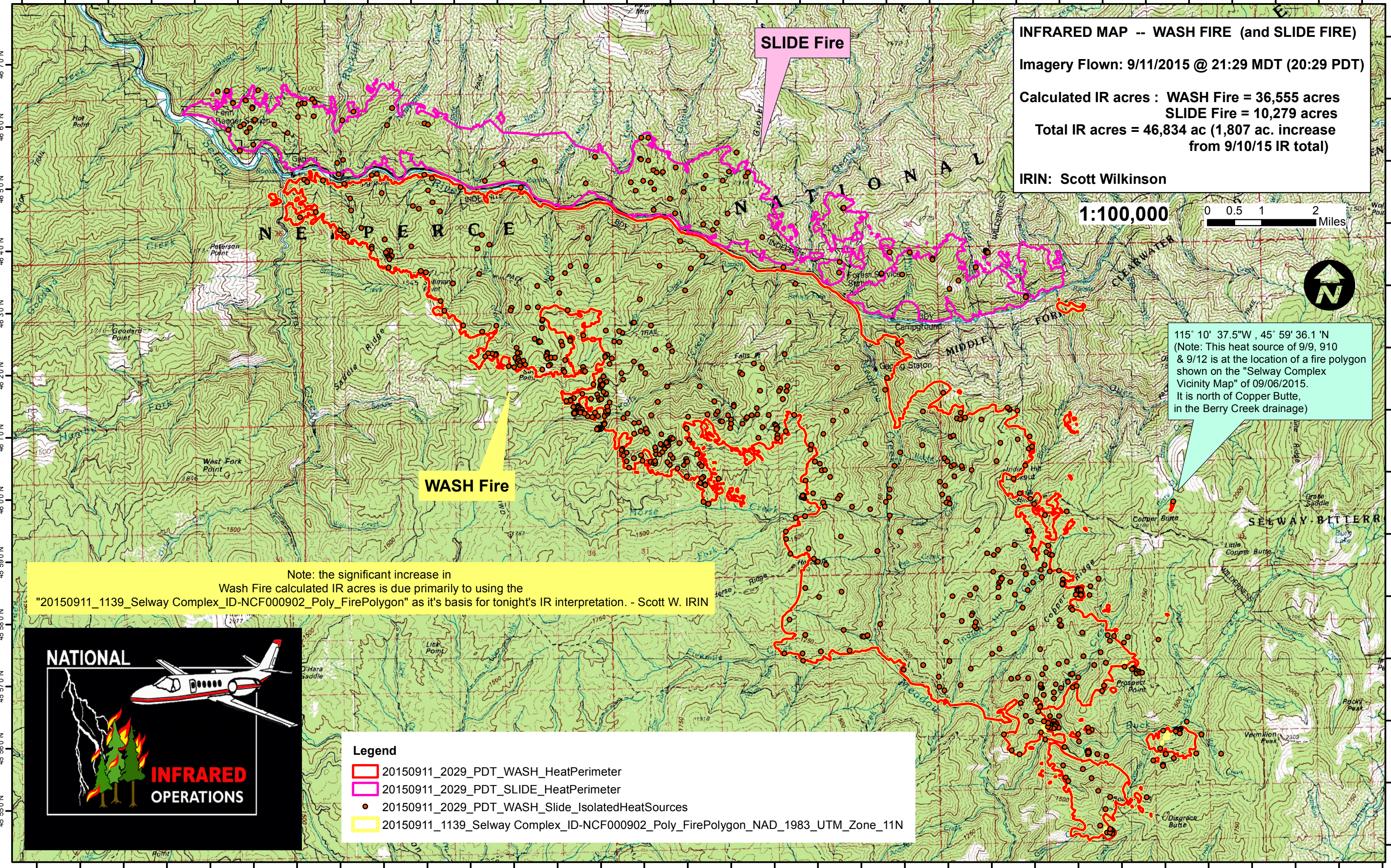


115°37'0"W 115°36'0"W 115°35'0"W 115°34'0"W 115°33'0"W 115°32'0"W 115°31'0"W 115°30'0"W 115°29'0"W 115°28'0"W 115°27'0"W 115°26'0"W 115°25'0"W 115°24'0"W 115°23'0"W 115°22'0"W 115°21'0"W 115°20'0"W 115°19'0"W 115°18'0"W 115°17'0"W 115°16'0"W 115°15'0"W 115°14'0"W 115°13'0"W 115°12'0"W 115°11'0"W 115°10'0"W 115°9'0"W 115°8'0"W 115°7'0"W 115°6'0"W



INFRARED MAP -- WASH FIRE (and SLIDE FIRE)
Imagery Flown: 9/11/2015 @ 21:29 MDT (20:29 PDT)
Calculated IR acres : WASH Fire = 36,555 acres
SLIDE Fire = 10,279 acres
Total IR acres = 46,834 ac (1,807 ac. increase from 9/10/15 IR total)
IRIN: Scott Wilkinson

1:100,000
0 0.5 1 2 Miles

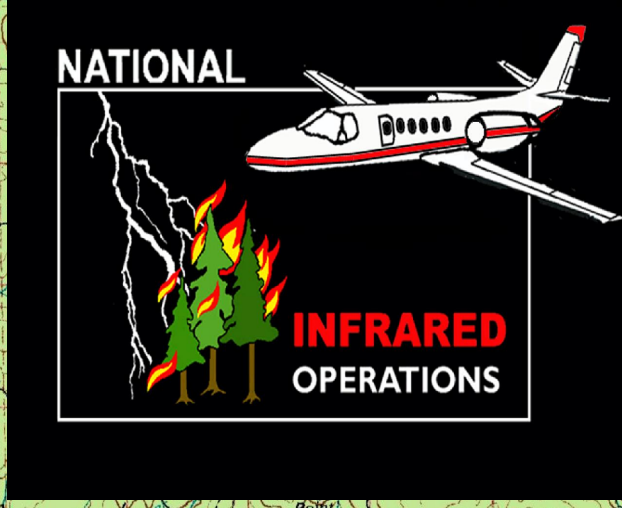


115° 10' 37.5"W, 45° 59' 36.1' N
(Note: This heat source of 9/9, 910 & 9/12 is at the location of a fire polygon shown on the "Selway Complex Vicinity Map" of 09/06/2015. It is north of Copper Butte, in the Berry Creek drainage)

WASH Fire

SLIDE Fire

Note: the significant increase in Wash Fire calculated IR acres is due primarily to using the "20150911_1139_Selway Complex_ID-NCF000902_Poly_FirePolygon" as it's basis for tonight's IR interpretation. - Scott W. IRIN



- Legend**
- 20150911_2029_PDT_WASH_HeatPerimeter
 - 20150911_2029_PDT_SLIDE_HeatPerimeter
 - 20150911_2029_PDT_WASH_Slide_IsolatedHeatSources
 - 20150911_1139_Selway Complex_ID-NCF000902_Poly_FirePolygon_NAD_1983_UTM_Zone_11N

115°37'0"W 115°36'0"W 115°35'0"W 115°34'0"W 115°33'0"W 115°32'0"W 115°31'0"W 115°30'0"W 115°29'0"W 115°28'0"W 115°27'0"W 115°26'0"W 115°25'0"W 115°24'0"W 115°23'0"W 115°22'0"W 115°21'0"W 115°20'0"W 115°19'0"W 115°18'0"W 115°17'0"W 115°16'0"W 115°15'0"W 115°14'0"W 115°13'0"W 115°12'0"W 115°11'0"W 115°10'0"W 115°9'0"W 115°8'0"W 115°7'0"W 115°6'0"W