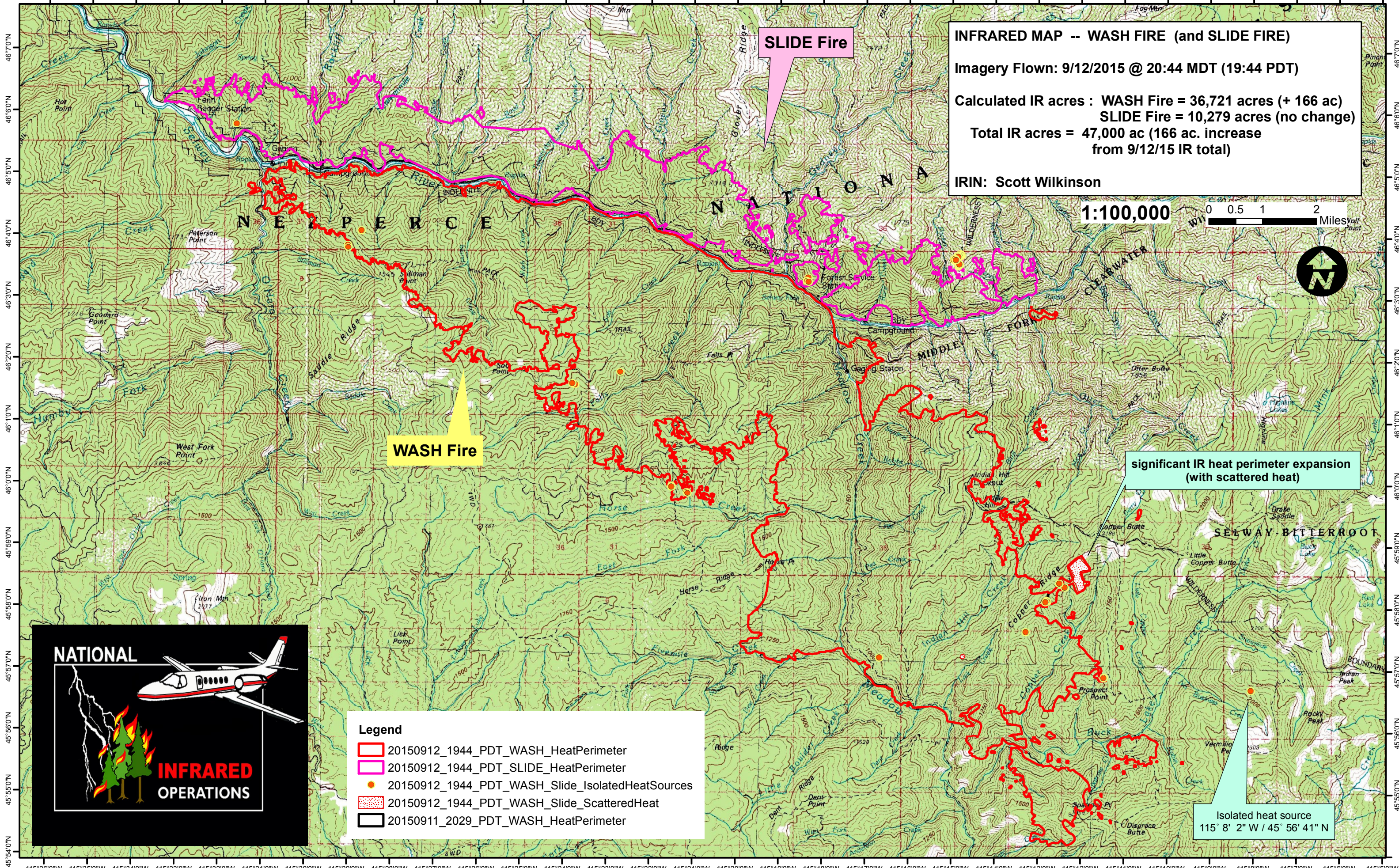
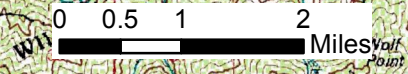


115°36'0"W 115°35'0"W 115°34'0"W 115°33'0"W 115°32'0"W 115°31'0"W 115°30'0"W 115°29'0"W 115°28'0"W 115°27'0"W 115°26'0"W 115°25'0"W 115°24'0"W 115°23'0"W 115°22'0"W 115°21'0"W 115°20'0"W 115°19'0"W 115°18'0"W 115°17'0"W 115°16'0"W 115°15'0"W 115°14'0"W 115°13'0"W 115°12'0"W 115°11'0"W 115°10'0"W 115°9'0"W 115°8'0"W 115°7'0"W 115°6'0"W 115°5'0"W



**INFRARED MAP -- WASH FIRE (and SLIDE FIRE)**  
Imagery Flown: 9/12/2015 @ 20:44 MDT (19:44 PDT)  
Calculated IR acres : WASH Fire = 36,721 acres (+ 166 ac)  
SLIDE Fire = 10,279 acres (no change)  
Total IR acres = 47,000 ac (166 ac. increase from 9/12/15 IR total)  
IRIN: Scott Wilkinson

1:100,000

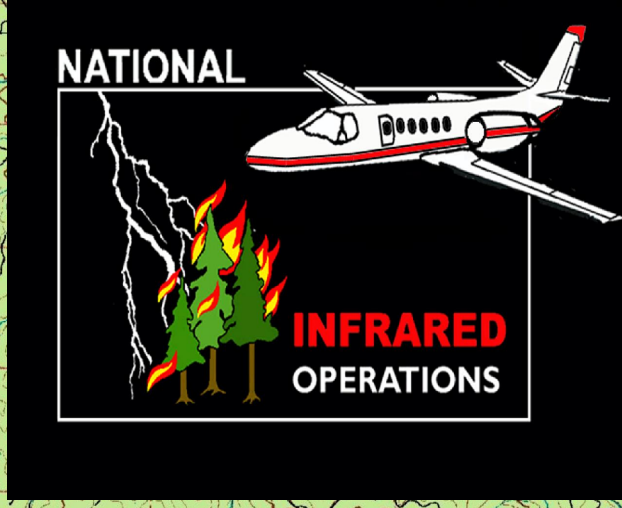


**WASH Fire**

**SLIDE Fire**

significant IR heat perimeter expansion (with scattered heat)

Isolated heat source  
115° 8' 2" W / 45° 56' 41" N



- Legend**
- 20150912\_1944\_PDT\_WASH\_HeatPerimeter
  - 20150912\_1944\_PDT\_SLIDE\_HeatPerimeter
  - 20150912\_1944\_PDT\_WASH\_Slide\_IsolatedHeatSources
  - 20150912\_1944\_PDT\_WASH\_Slide\_ScatteredHeat
  - 20150911\_2029\_PDT\_WASH\_HeatPerimeter

115°36'0"W 115°35'0"W 115°34'0"W 115°33'0"W 115°32'0"W 115°31'0"W 115°30'0"W 115°29'0"W 115°28'0"W 115°27'0"W 115°26'0"W 115°25'0"W 115°24'0"W 115°23'0"W 115°22'0"W 115°21'0"W 115°20'0"W 115°19'0"W 115°18'0"W 115°17'0"W 115°16'0"W 115°15'0"W 115°14'0"W 115°13'0"W 115°12'0"W 115°11'0"W 115°10'0"W 115°9'0"W 115°8'0"W 115°7'0"W 115°6'0"W 115°5'0"W