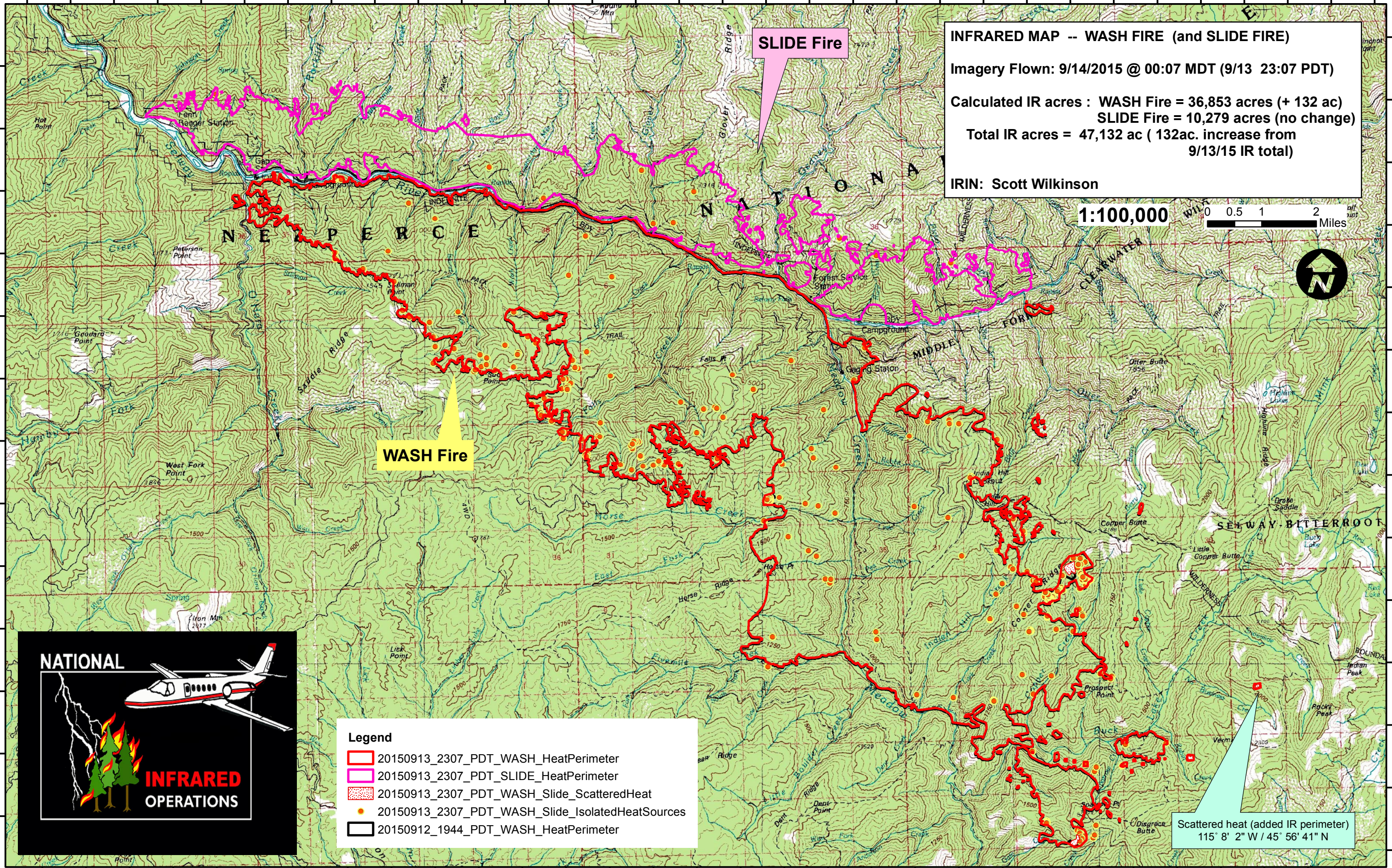


115°36'0"W 115°35'0"W 115°34'0"W 115°33'0"W 115°32'0"W 115°31'0"W 115°30'0"W 115°29'0"W 115°28'0"W 115°27'0"W 115°26'0"W 115°25'0"W 115°24'0"W 115°23'0"W 115°22'0"W 115°21'0"W 115°20'0"W 115°19'0"W 115°18'0"W 115°17'0"W 115°16'0"W 115°15'0"W 115°14'0"W 115°13'0"W 115°12'0"W 115°11'0"W 115°10'0"W 115°9'0"W 115°8'0"W 115°7'0"W 115°6'0"W 115°5'0"W



INFRARED MAP -- WASH FIRE (and SLIDE FIRE)

Imagery Flown: 9/14/2015 @ 00:07 MDT (9/13 23:07 PDT)

Calculated IR acres : WASH Fire = 36,853 acres (+ 132 ac)
 SLIDE Fire = 10,279 acres (no change)

Total IR acres = 47,132 ac (132ac. increase from 9/13/15 IR total)

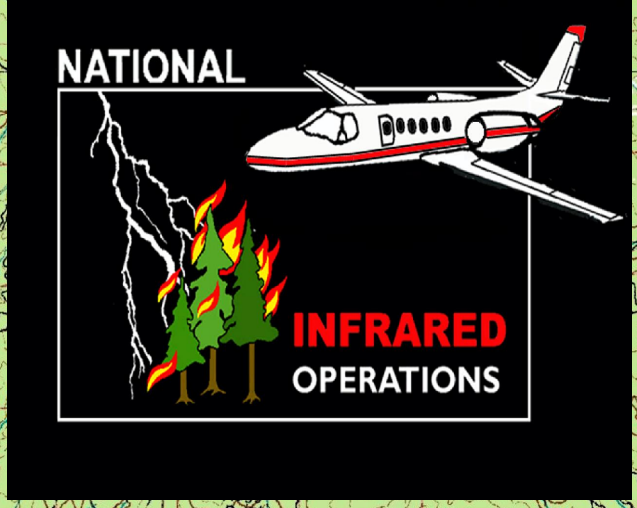
IRIN: Scott Wilkinson

1:100,000

0 0.5 1 2 Miles



- Legend**
- 20150913_2307_PDT_WASH_HeatPerimeter
 - 20150913_2307_PDT_SLIDE_HeatPerimeter
 - 20150913_2307_PDT_WASH_Slide_ScatteredHeat
 - 20150913_2307_PDT_WASH_Slide_IsolatedHeatSources
 - 20150912_1944_PDT_WASH_HeatPerimeter



Scattered heat (added IR perimeter)
 115° 8' 2" W / 45° 56' 41" N

115°36'0"W 115°35'0"W 115°34'0"W 115°33'0"W 115°32'0"W 115°31'0"W 115°30'0"W 115°29'0"W 115°28'0"W 115°27'0"W 115°26'0"W 115°25'0"W 115°24'0"W 115°23'0"W 115°22'0"W 115°21'0"W 115°20'0"W 115°19'0"W 115°18'0"W 115°17'0"W 115°16'0"W 115°15'0"W 115°14'0"W 115°13'0"W 115°12'0"W 115°11'0"W 115°10'0"W 115°9'0"W 115°8'0"W 115°7'0"W 115°6'0"W 115°5'0"W