

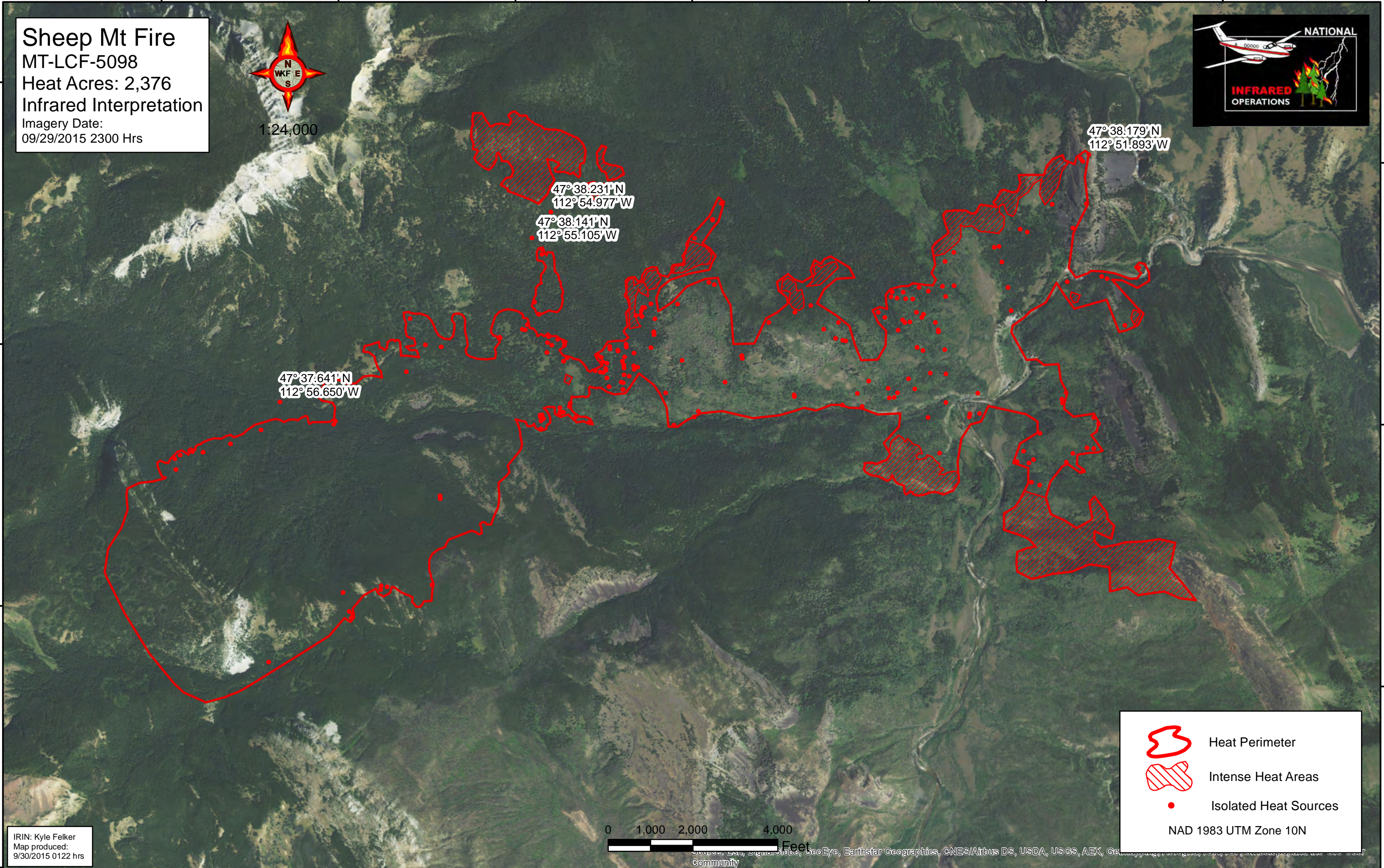
112°57'W 112°56'W 112°55'W 112°54'W 112°53'W 112°52'W 112°51'W

**Sheep Mt Fire**  
MT-LCF-5098  
Heat Acres: 2,376  
Infrared Interpretation  
Imagery Date:  
09/29/2015 2300 Hrs



47°39'N  
47°38'N  
47°37'N  
47°36'N

47°39'N  
47°38'N  
47°37'N  
47°36'N






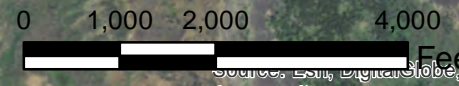
47°37.641'N  
112°56.650'W

47°38.231'N  
112°54.977'W

47°38.141'N  
112°55.105'W

47°38.179'N  
112°51.893'W

-  Heat Perimeter
  -  Intense Heat Areas
  -  Isolated Heat Sources
- NAD 1983 UTM Zone 10N



IRIN: Kyle Felker  
Map produced:  
9/30/2015 0122 hrs

112°58'W 112°57'W 112°56'W 112°55'W 112°54'W 112°53'W 112°52'W 112°51'W